

DATE: February 29, 2024

DEPARTMENT OF GENERAL SERVICES
BUREAU OF CAPITAL PROJECT DESIGN MANAGEMENT
1800 HERR STREET
HARRISBURG, PENNSYLVANIA

ADDENDUM NO. 10

on

PROJECT NO. DGS C-1576-0010 PHASE 001
PROJECT TITLE - SCI Frackville - Electrical Upgrades

PROFESSIONAL:

Greenman-Pedersen, Inc.
52 Glenmaura National Blvd
Scranton, PA, 18505

If you submitted a bid prior to this Addendum being issued, your bid has been discarded and you must re-submit your bid(s) prior to the bid opening date and time.

ADMINISTRATIVE CHANGES – ALL CONTRACTS

Item 1 – Liquidated damages will not be accrued due to extended equipment lead times. All awarded contractors shall make known any extended equipment lead times during construction such that a contract extension or temporary contract suspension may be issued. The lead contractor shall incorporate any extended equipment lead times in the updated construction schedule.

Item 2 - The schedule durations and sequencing noted on G1.0 are preliminary expectations. Scheduling and sequencing shall be determined with the facility at the initial job conference and in coordination with the submission of the Prime Contractor's completion schedule.

Item 3 – Per Specification 016100, the work within the secured perimeter must be scheduled and executed in coordination with the escorts that the Institution will provide to visually observe work crews. Each Prime Contractor is responsible for costs associated with securing their own equipment, materials,

SPECIFICATION CHANGES – ALL CONTRACTS

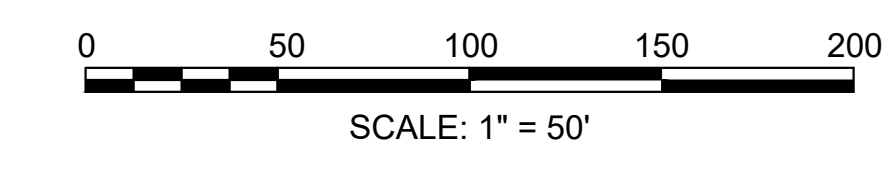
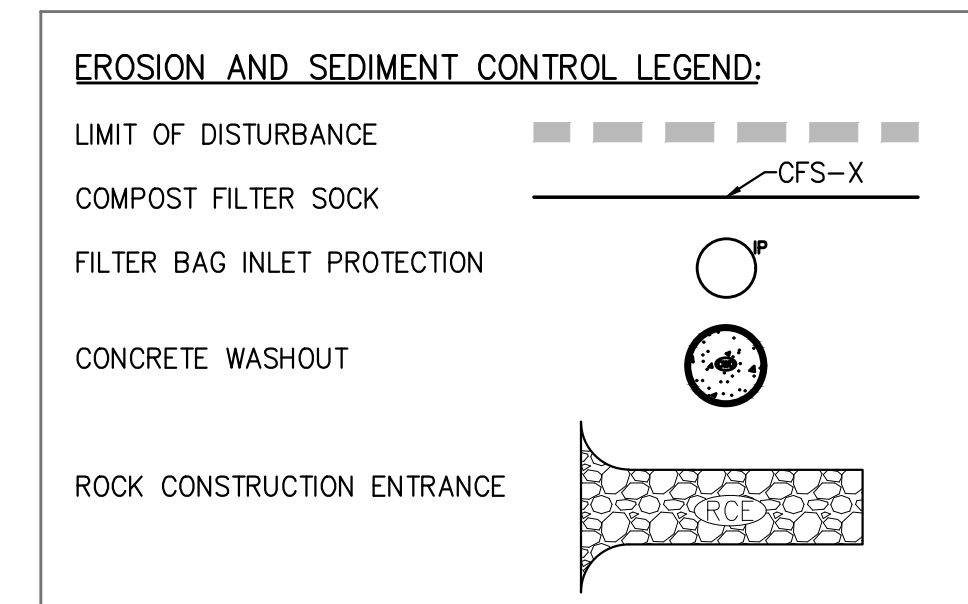
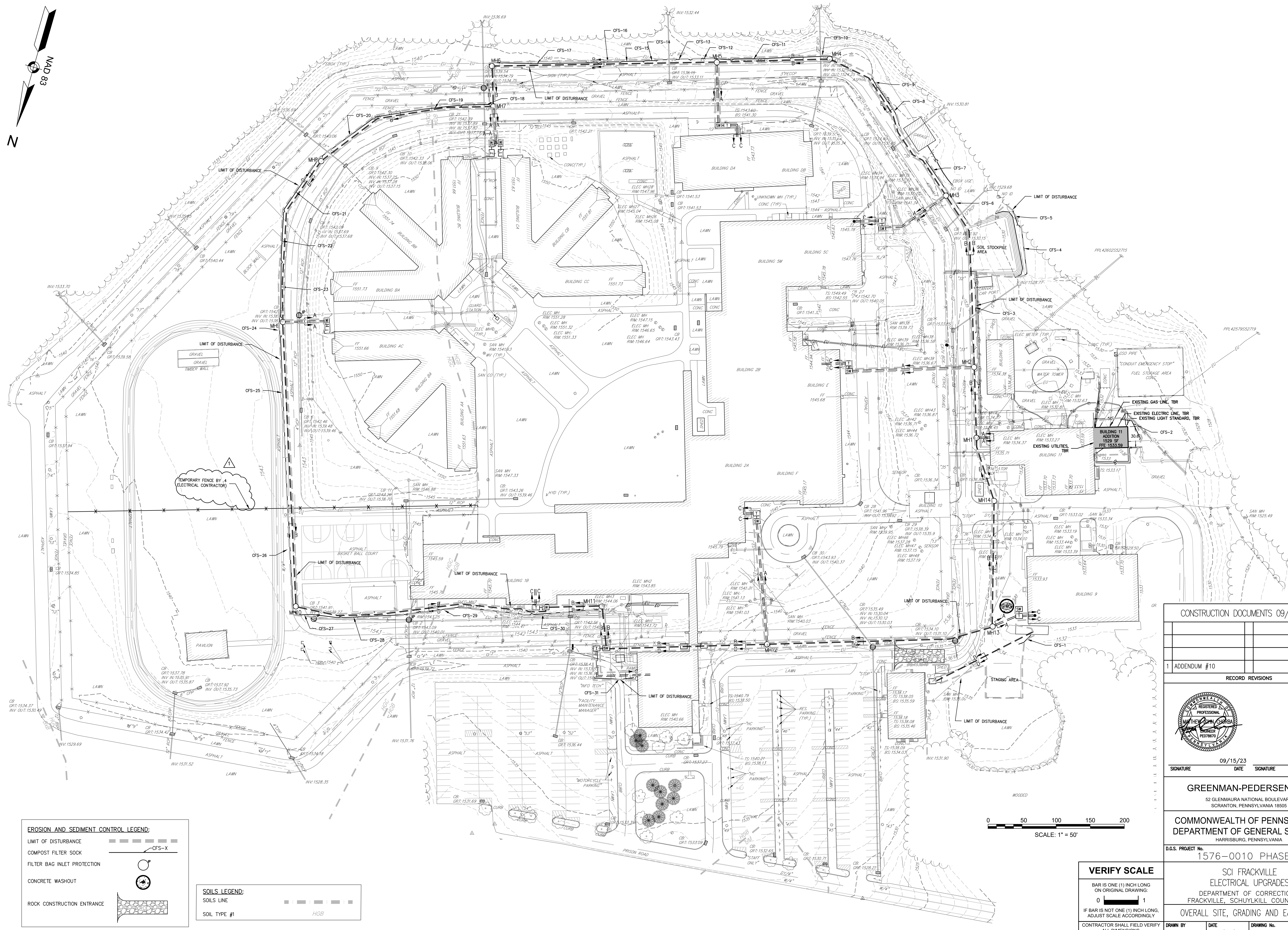
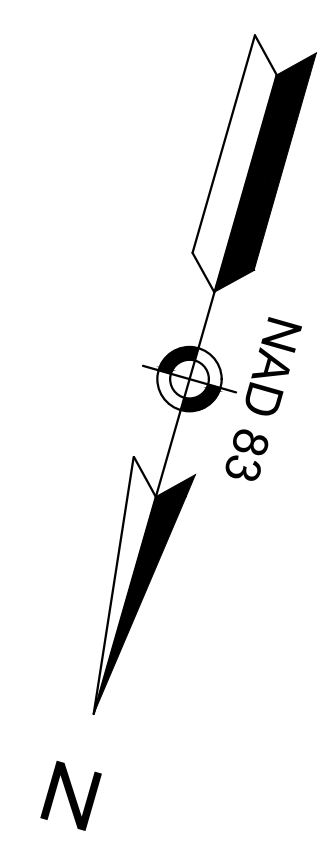
None

DRAWING CHANGES – ALL CONTRACTS

Item 1 - C3.1 – Change note at temporary fence to “TEMPORARY FENCE BY .4 ELECTRICAL CONTRACTOR”.

Item 2 - C3.8 – Change note at temporary fence to “TEMPORARY FENCE BY .4 ELECTRICAL CONTRACTOR”.

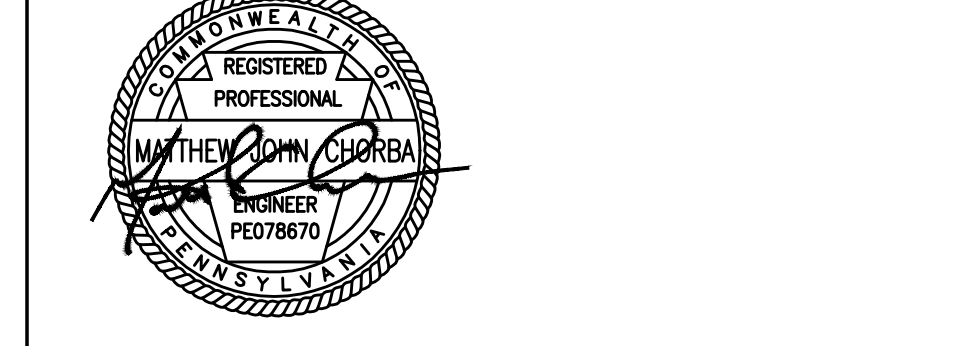
Item 3 - C6.1 – Added note to temporary fence detail to include “TEMPORARY FENCE BY .4 ELECTRICAL CONTRACTOR”.



CONSTRUCTION DOCUMENTS 09/15/2023

1 ADDENDUM #10

RECORD REVISIONS



09/15/23
SIGNATURE DATE SIGNATURE DATE

GREENMAN-PEDERSEN, INC
52 GLENMAURA NATIONAL BOULEVARD
SCRANTON, PENNSYLVANIA 18505

COMMONWEALTH OF PENNSYLVANIA
DEPARTMENT OF GENERAL SERVICES
HARRISBURG, PENNSYLVANIA

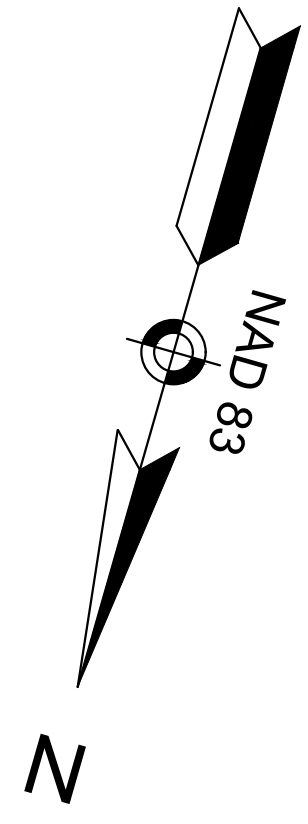
D.G.S. PROJECT No. 1576-0010 PHASE 1

VERIFY SCALE
BAR IS ONE (1) INCH LONG ON ORIGINAL DRAWING:
0 1
IF BAR IS NOT ONE (1) INCH LONG, ADJUST SCALE ACCORDINGLY.

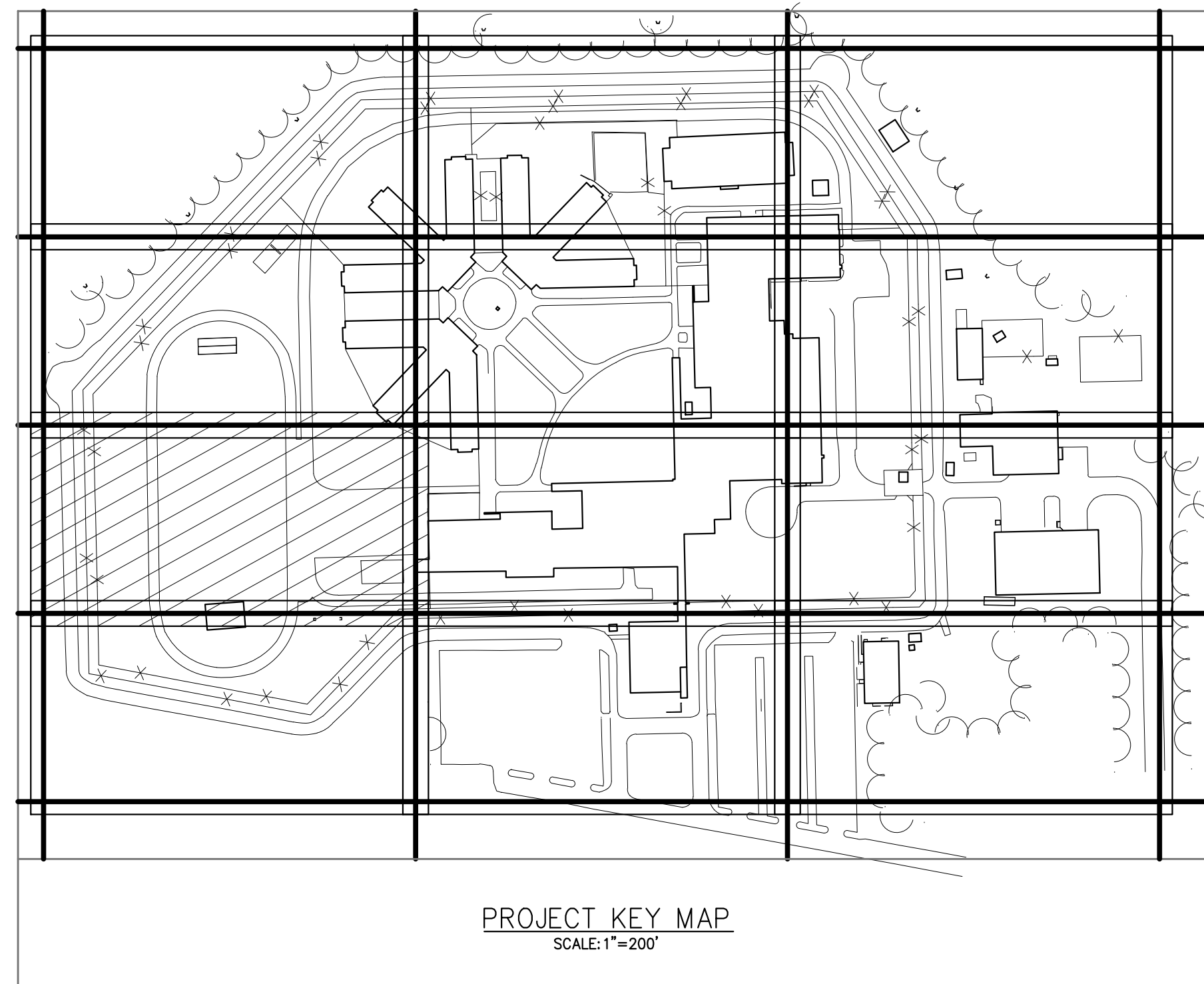
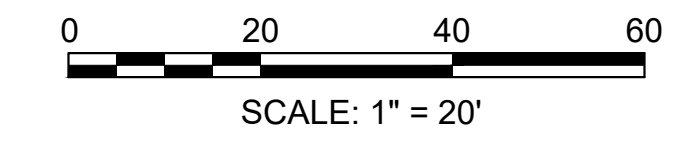
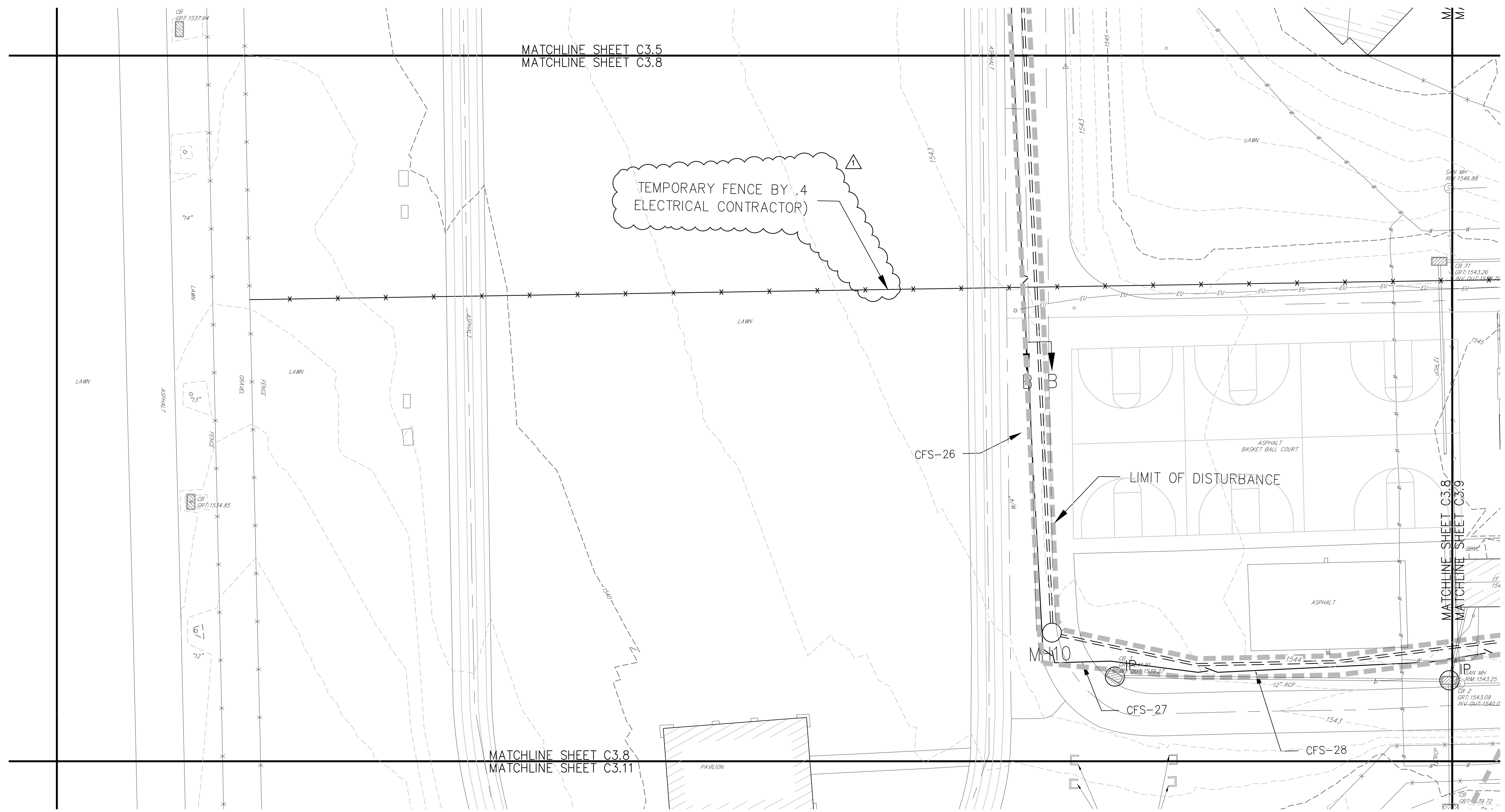
CONTRACTOR SHALL FIELD VERIFY ALL DIMENSIONS. VARIANCE FROM CONTRACT DOCUMENTS NOT PERMITTED WITHOUT PROFESSIONAL & BUREAU OF CONSTRUCTION APPROVAL.

DRAWN BY: B. McLAIN
DATE: 09/15/23
CHECKED BY: J. STACHOKUS
SCALE: AS NOTED

DRIVING No. C3.1



ITEM	EXISTING	PROPOSED
PROPERTY LINE	---	---
ADJOINER	---	---
MAJOR CONTOUR	- - - - 990	- - - - 990
MINOR CONTOUR	- - - - 991	- - - - 991
AREA DRAIN	●	●
BOLLARD	○	○
CENTERLINE	---	---
CTV LINE	-CTV-	-E.CTV-
CURB	---	---
INLET, TYPE C	▨	▨
INLET, TYPE M	▨	▨
EDGE OF PAVEMENT	---	---
EDGE OF SHOULDER	---	---
ELECTRIC LINE, DUCTBANK	-E-	-DBE-
FENCE	X	X
FIRE HYDRANT	△	△
FLARED END SECTION	△	△
GAS LINE	○	○
LIGHT POLE	☆	☆
PAVEMENT MARKING	---	---
SIGN	+	+
STORM MANHOLE	⊙	⊙
STORM PIPE	---	---
SANITARY LINE	-S-	-S-
SANITARY MANHOLE	⊙	⊙
TELECOMMUNICATION LINE	-T-	-T-
TREELINE	~	~
UTILITY MANHOLE	⊙	⊙
UTILITY POLE	⊙	⊙
WALL	---	---
WATERLINE	-W-	-W-
BUILDING	▨	▨



EROSION AND SEDIMENT CONTROL LEGEND:	
LIMIT OF DISTURBANCE	--- CFS-X
COMPOST FILTER SOCK	○
FILTER BAG INLET PROTECTION	○
CONCRETE WASHOUT	⊙
ROCK CONSTRUCTION ENTRANCE	▨

SOILS LEGEND:	
SOILS LINE	---
SOIL TYPE #1	HGB

CONSTRUCTION DOCUMENTS 09/15/2023	
1	ADDENDUM #10

RECORD REVISIONS

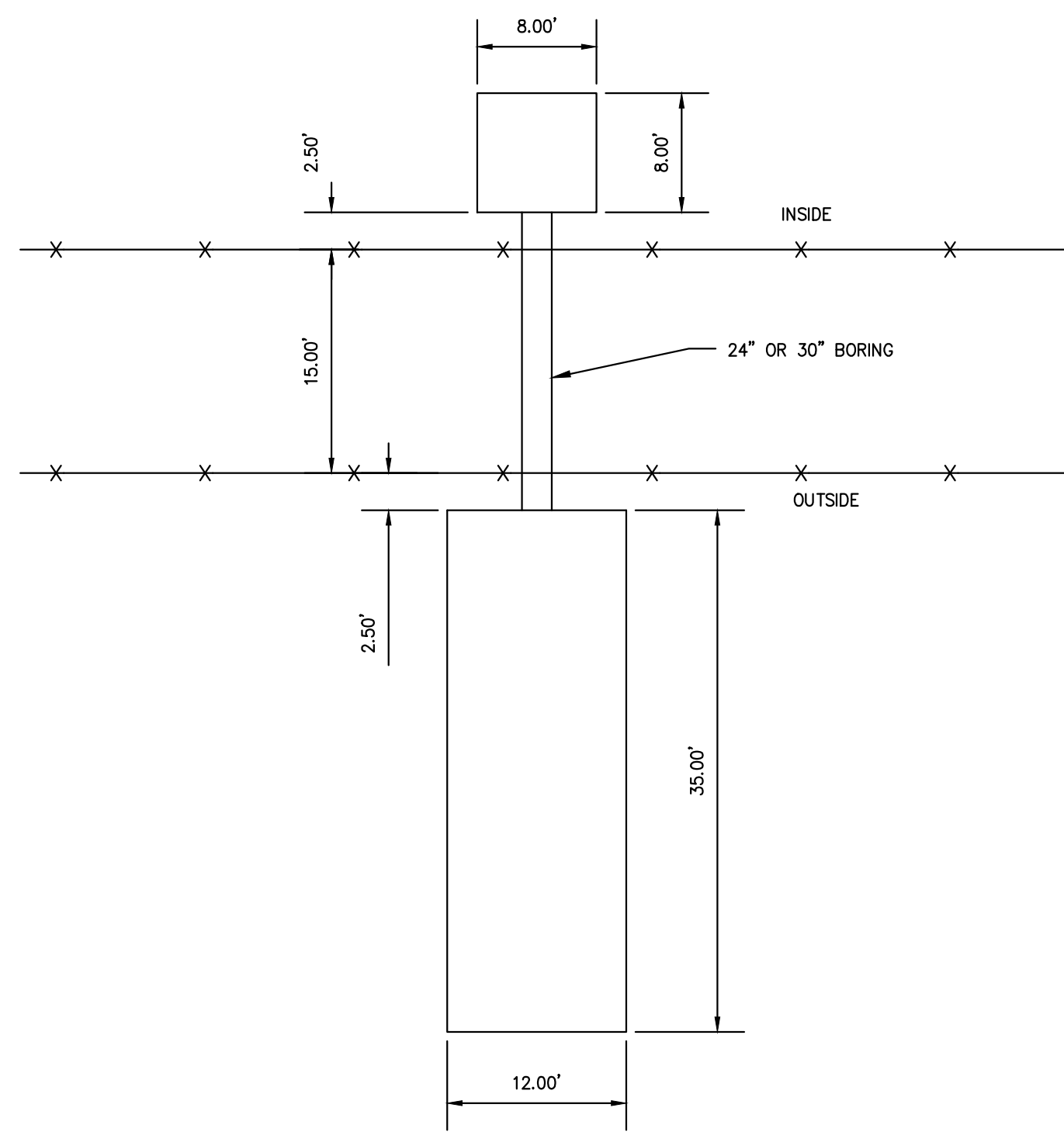
09/15/23
 SIGNATURE DATE SIGNATURE DATE

GREENMAN-PEDERSEN, INC
 52 GLENMAURA NATIONAL BOULEVARD
 SCRANTON, PENNSYLVANIA 18505

COMMONWEALTH OF PENNSYLVANIA
 DEPARTMENT OF GENERAL SERVICES
 HARRISBURG, PENNSYLVANIA

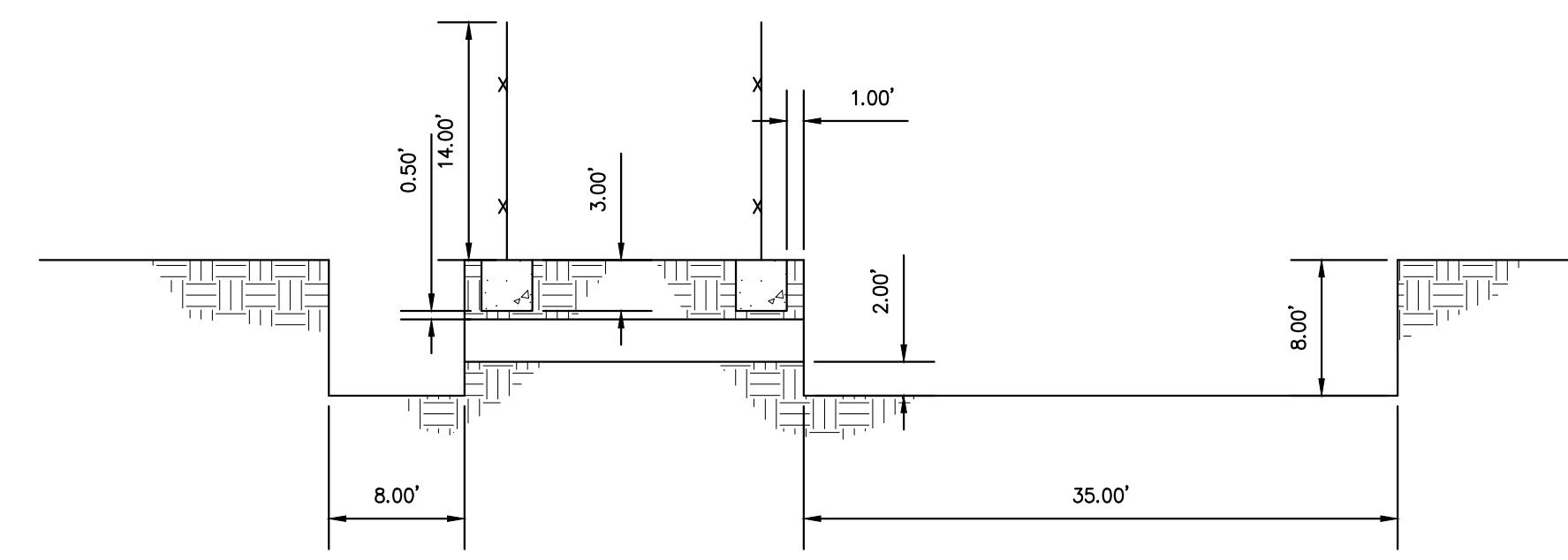
D.G.S. PROJECT No. 1576-0010 PHASE 1

VERIFY SCALE BAR IS ONE (1) INCH LONG ON ORIGINAL DRAWING: 0 1 IF BAR IS NOT ONE (1) INCH LONG, ADJUST SCALE ACCORDINGLY	CONTRACTOR SHALL FIELD VERIFY ALL DIMENSIONS. VARIANCE FROM CONTRACT DOCUMENTS NOT PERMITTED WITHOUT PROFESSIONAL & BUREAU OF CONSTRUCTION APPROVAL.	DRAWN BY B. McLAINE	DATE 09/15/23	DRAWING No. C3.8
		CHECKED BY J. STACHOKUS	SCALE AS NOTED	

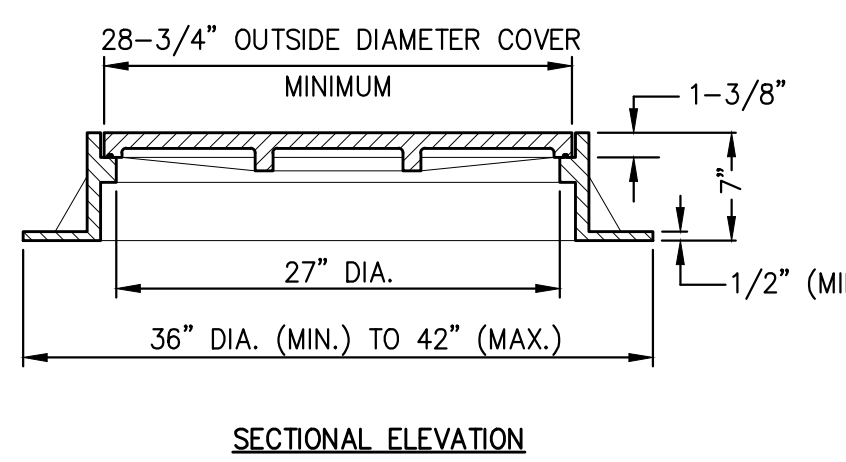
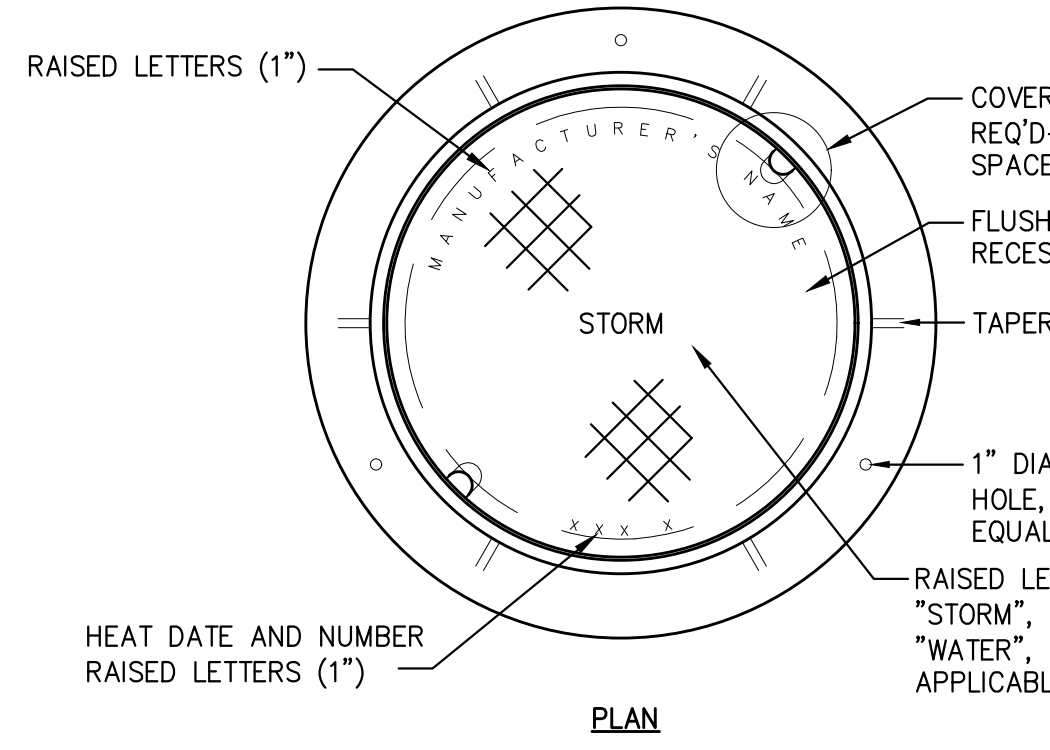
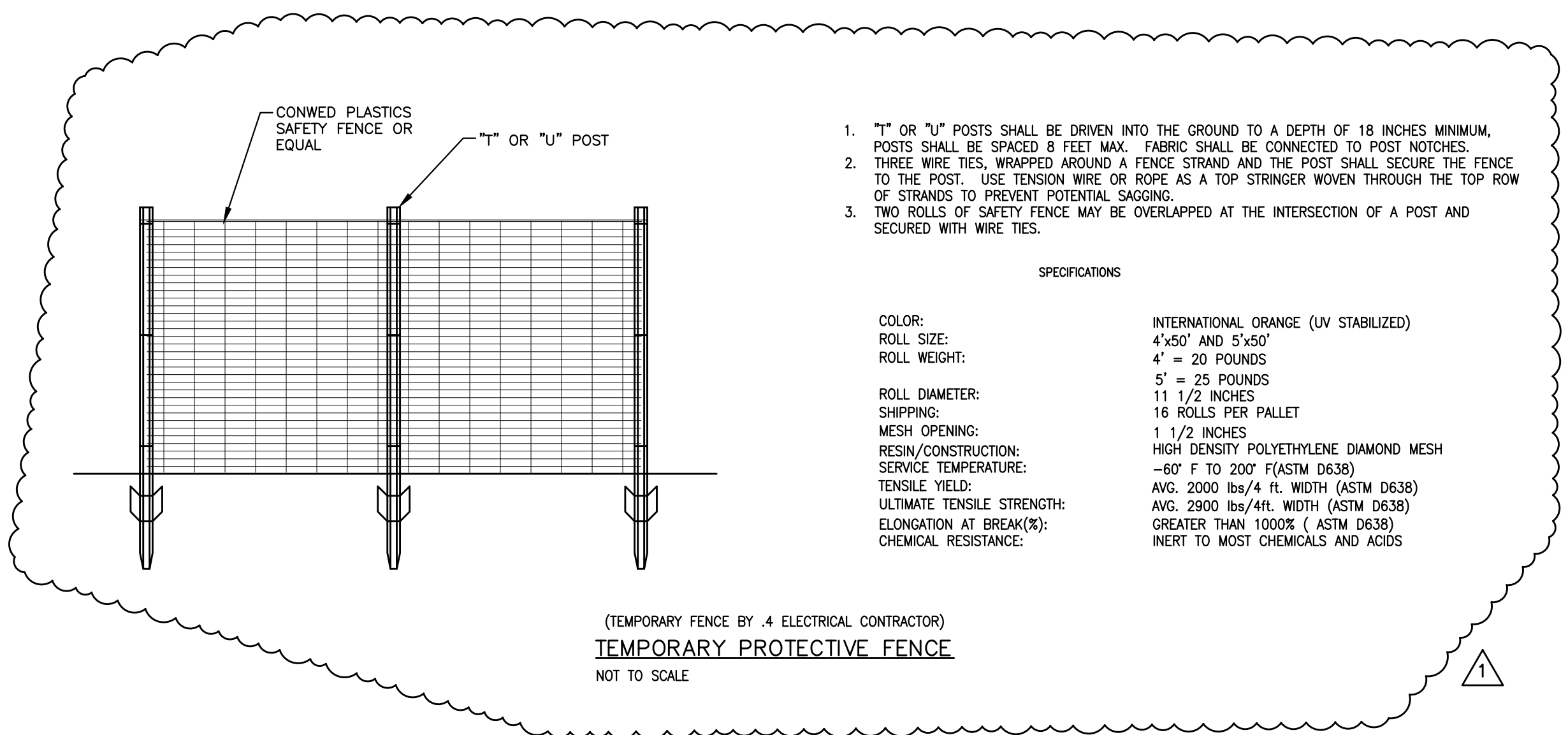


- NOTES:
- CASING PIPE SHALL BE STEEL PIPE WITH A MINIMUM WALL THICKNESS OF 0.5" SIZE OF THE CASING PIPE SHALL BE BASED ON THE NUMBER OF CONDUITS FOR THE DUCTBANKS AS SHOWN ON THE ELECTRICAL DRAWINGS.
 - CASING PIPE SHALL BE A MINIMUM OF 20 FEET LONG AND BE ONE CONTINUOUS LENGTH PIPE WITHOUT ANY JOINTS.
 - EACH CONDUIT SHALL BE ONE CONTINUOUS CONDUIT/PIPE THROUGHOUT THE ENTIRE LENGTH OF CASING PIPE AND EACH CONDUIT SHALL NOT HAVE ANY JOINTS WITHIN THE CASING PIPE.
 - BORINGS SHALL PROVIDED WITH CASING SPACERS. CASING SPACERS SHALL BE PROVIDED AT EACH END OF THE CASING PIPE AND NOT TO EXCEED 5 FEET BETWEEN EACH CASING SPACER FOR THE ENTIRE LENGTH OF THE PIPE.
 - CASING SPACERS SHALL BE A PRODUCT THAT IS A STANDARD PRODUCT DESIGNED AND MANUFACTURED BY A COMPANY THAT USES A MATERIAL THAT ELECTRICALLY ISOLATES THE CONDUIT FROM THE CASING PIPE, CONTAINS LOW FRICTION WHEEL ASSEMBLIES, GROUT HOLES AND CONTOURED EDGES FOR INSTALLATION OF FLOWABLE FILL.
 - FLOWABLE FILL SHALL BE UTILIZED FOR THE ENTIRE LENGTH AND DIAMETER OF THE CASING PIPE IN AREAS WHERE BORINGS ENCOUNTER THE WATER TABLE.
 - CONTRACTOR SHALL DEWATER BORING PITS (LAUNCH AND RECEIVING PITS), AS NECESSARY.
 - CONTRACTOR SHALL TEST PIT EACH SIDE OF THE FENCE CROSSING IN ORDER TO DETERMINE THE REQUIRED DEPTH OF EACH BORING AND THE PRESENCE OF GROUNDWATER.
 - CONTRACTOR SHALL UTILIZE SUITABLE ON-SITE EXCAVATED MATERIAL FOR REFILLING/BACKFILLING/COMPACTING BORING PITS.
 - CASING PIPE SIZES ARE 24" AND 30" CONDUIT SPACING 6" MINIMUM OUTSIDE EDGE OF EACH CONDUIT. CONDUIT IS SCHEDULE 40 PVC.
 - CONTRACTOR SHALL INSTALL CONDUIT, THAT IS ENCASED IN CONCRETE, IN ACCORDANCE WITH ACCEPTED CONSTRUCTION METHODS AND PRACTICES. CONTRACTOR SHALL MINIMIZE THE EFFECTS OF BUOYANCY FORCES ON PVC CONDUITS.
 - CONTRACTOR SHALL INSTALL CASING SPACERS, INCLUDING SUFFICIENT NUMBER, SIZE AND SPACING REQUIREMENTS, IN ACCORDANCE WITH THE CASING SPACER MANUFACTURER'S RECOMMENDATIONS AND ACCEPTED CONSTRUCTION METHODS AND PRACTICES. CONTRACTOR SHALL TAKE INTO CONSIDERATION THE EXISTING SITE CONDITIONS IN THE DESIGN AND INSTALLATION OF CONDUITS AND CASING SPACERS.

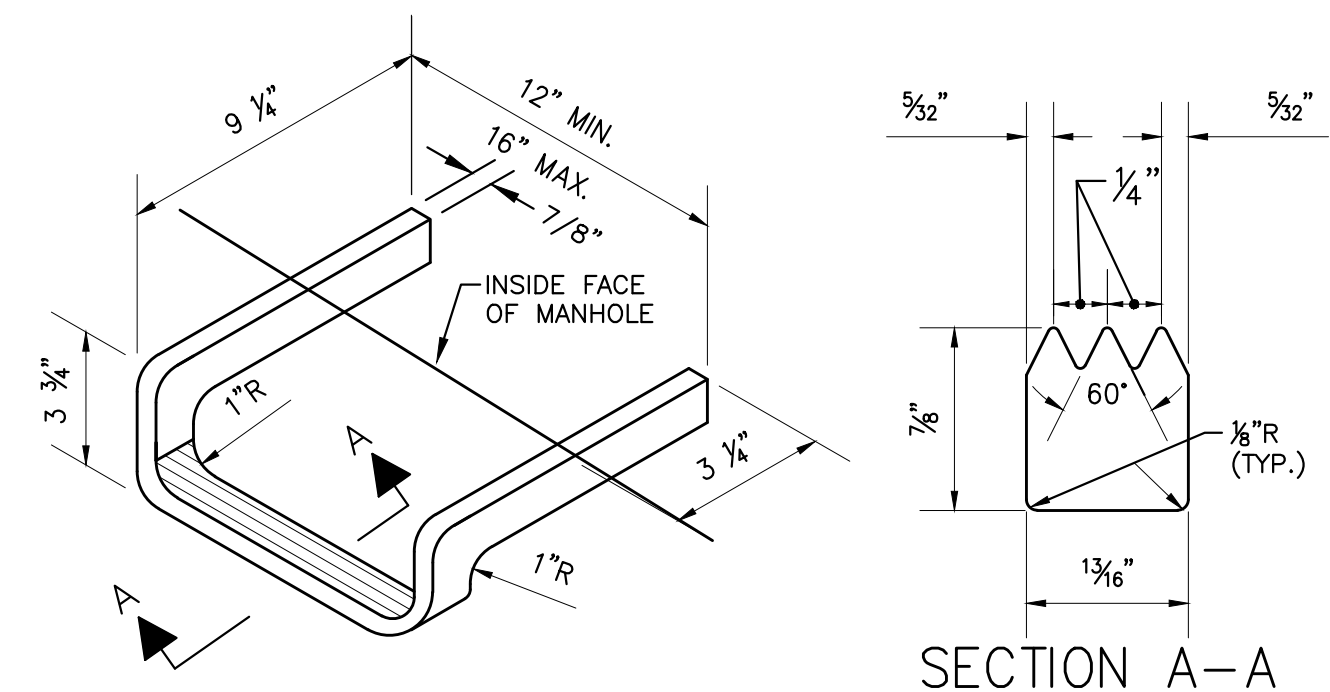
TYPICAL FENCE BORING PLAN VIEW
NOT TO SCALE



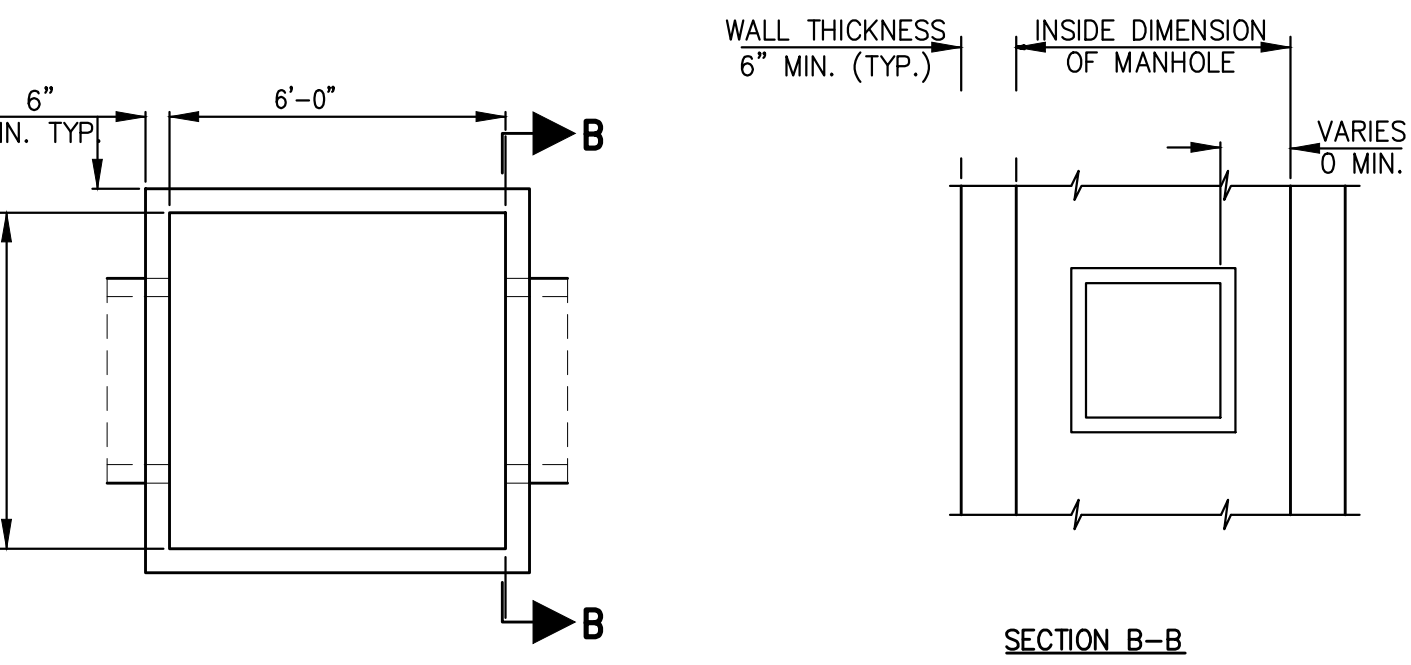
TYPICAL FENCE BORING PROFILE VIEW
NOT TO SCALE



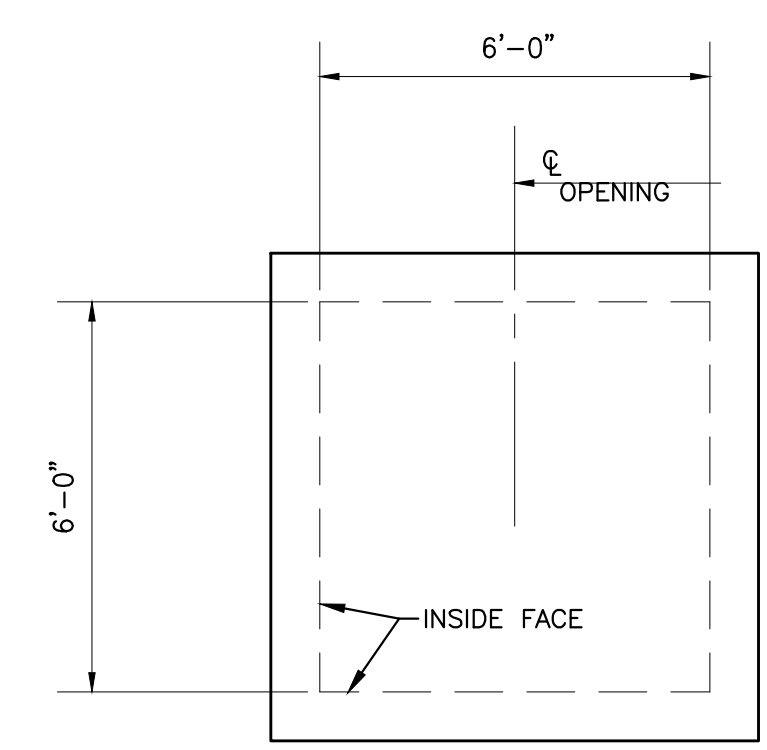
- NOTES:
- PROVIDE IN ACCORDANCE WITH PENNDOT RC-39M, DATED SEPTEMBER 15, 2016.
 - MANHOLE COVER TO BE WELDED OR BOLTED SHUT.
 - FOR BOLTED COVERS PROVIDE PENTAGON BOLT HEADS AND A MINIMUM OF THREE PENTAGON TEE WRENCHES.
- STANDARD MANHOLE FRAME AND COVER
NOT TO SCALE



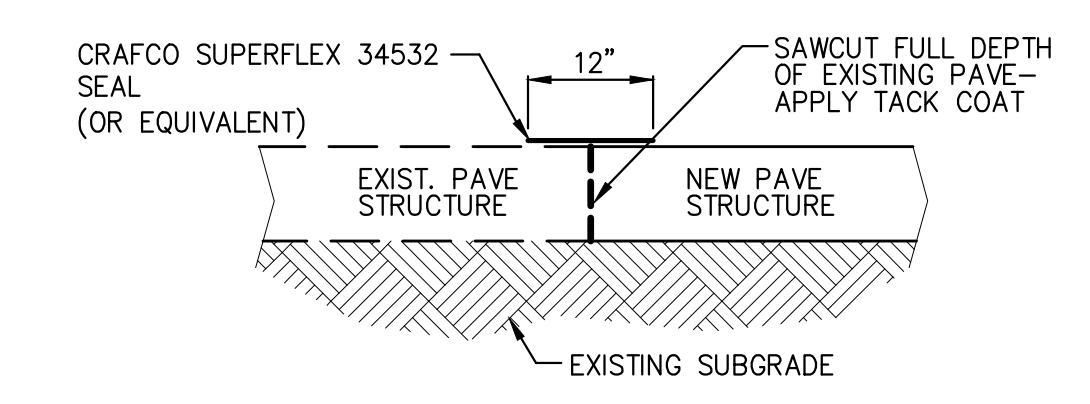
- NOTES:
- STEPS TO BE FABRICATED OF ALUMINUM ALLOY 6061-T6
 - PORTION OF STEPS TO BE EMBEDDED IN WALLS OF MANHOLES OR CHAMBERS TO BE DIPPED IN HEAVY BODIED BITUMINOUS PAINT.
- ALUMINUM MANHOLE STEP
NOT TO SCALE



ELECTRICAL MANHOLE DETAIL
NOT TO SCALE

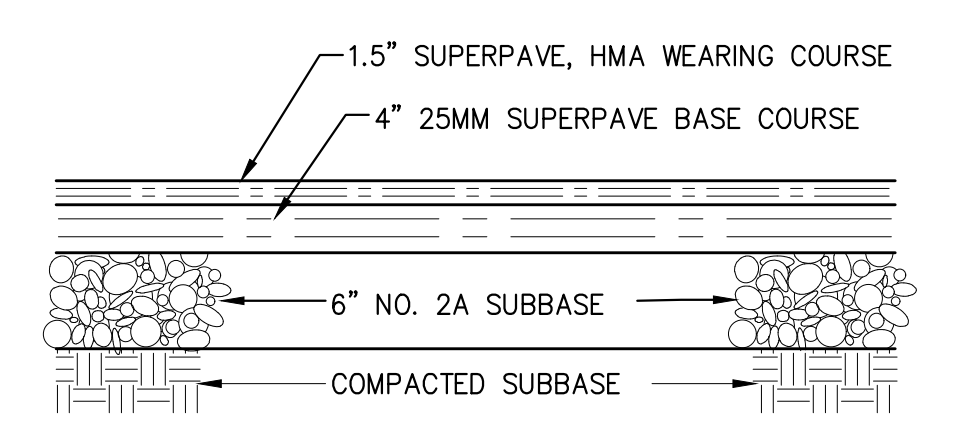


ELECTRICAL MANHOLE TOP
NOT TO SCALE

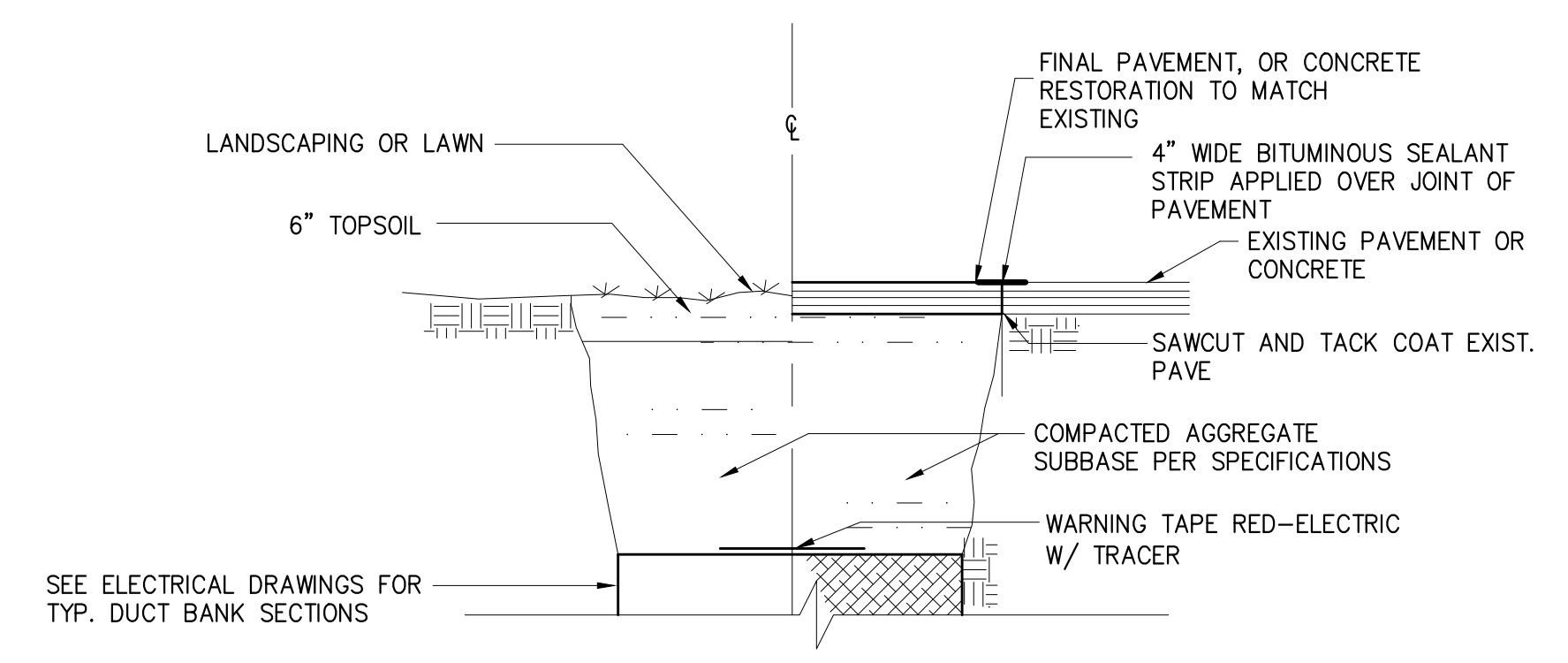


NOTE: IF MATERIAL OTHER THAN CRAFCO IS TO BE USED WITHIN PENNDOT RIGHT-OF-WAY, PRE-APPROVAL MUST BE OBTAINED BY THE DISTRICT PERMIT ENGINEER.

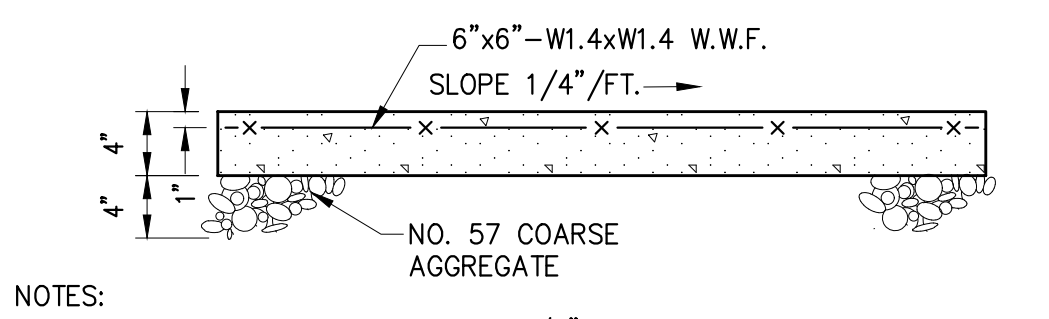
SAWCUT AND JOINT SEALING DETAIL
NOT TO SCALE



NOT FOR USE WITHIN PENNDOT RIGHT-OF-WAY
LIGHT DUTY PAVEMENT SECTION
NOT TO SCALE

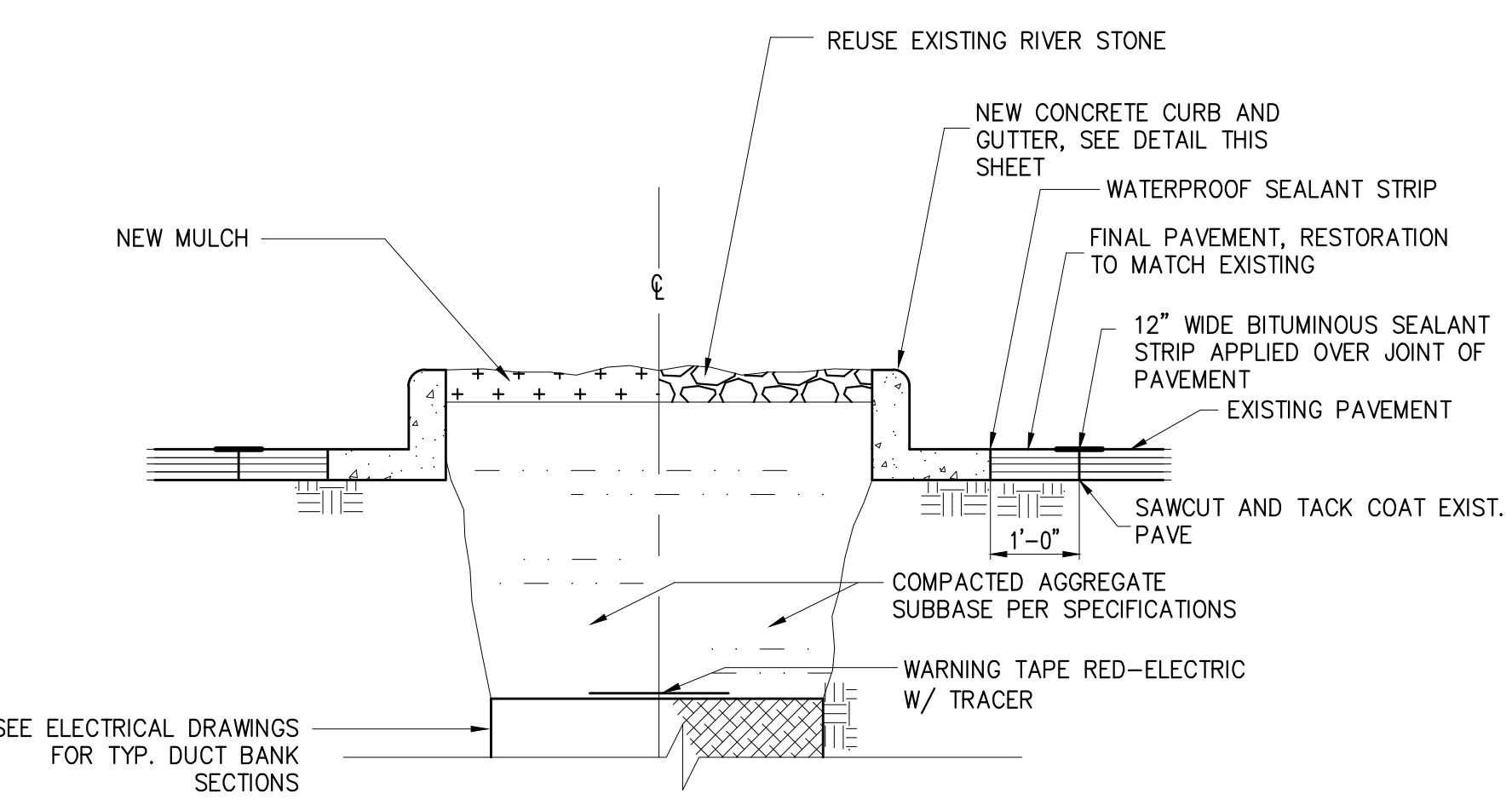


TYPICAL TRENCH SECTION
NOT TO SCALE



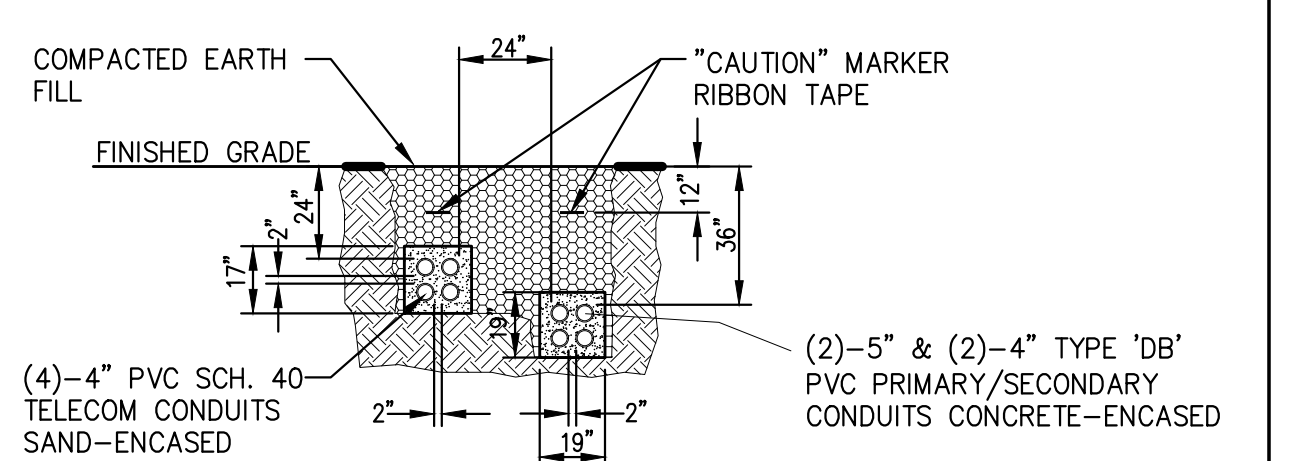
- NOTES:
- NEW CONCRETE WALK TO HAVE 2 1/2" TROWELED EDGES.
 - PROVIDE A 3/8" THICK PREFORMED EXPANSION JOINT WITH A 1/2" DEEP SEALANT AT APPROXIMATELY 30'-0" O.C. OR WHERE WALK CHANGES DIRECTION OR ABUTS STRUCTURE.
 - CONTROL JOINTS SHALL BE PLACED AT APPROXIMATELY 5 FOOT INTERVALS. CONTROL JOINTS SHALL BE 3/4" DEEP SCORE JOINTS.
 - WOOD FLOAT WALK AND PROVIDE A LIGHT BROOM FINISH.
 - ALL CONCRETE TO BE INSTALLED PER ACI 318 LATEST EDITION, 4000 PSI @ 28 DAYS, UNLESS OTHERWISE NOTED.

CONCRETE SIDEWALK
NOT TO SCALE



TYPICAL MULCH/GRAVEL ISLAND SECTION
NOT TO SCALE

- NOTES:
- SEE TYPICAL TRENCH SECTION FOR TIE IN TO EXISTING PAVE/CONCRETE.
 - SECTION SHOWN DEPICTS A PARALLEL DUCT BANK INSTALLATION. RESTORATION IS THE SAME FOR ALL DUCT BANK INSTALLATIONS.



UTILITY TRENCH IN PAVEMENT AREAS
NOT TO SCALE

CONSTRUCTION DOCUMENTS 09/15/2023

1	ADDENDUM #10
---	--------------

RECORD REVISIONS

09/15/23
SIGNATURE DATE SIGNATURE DATE

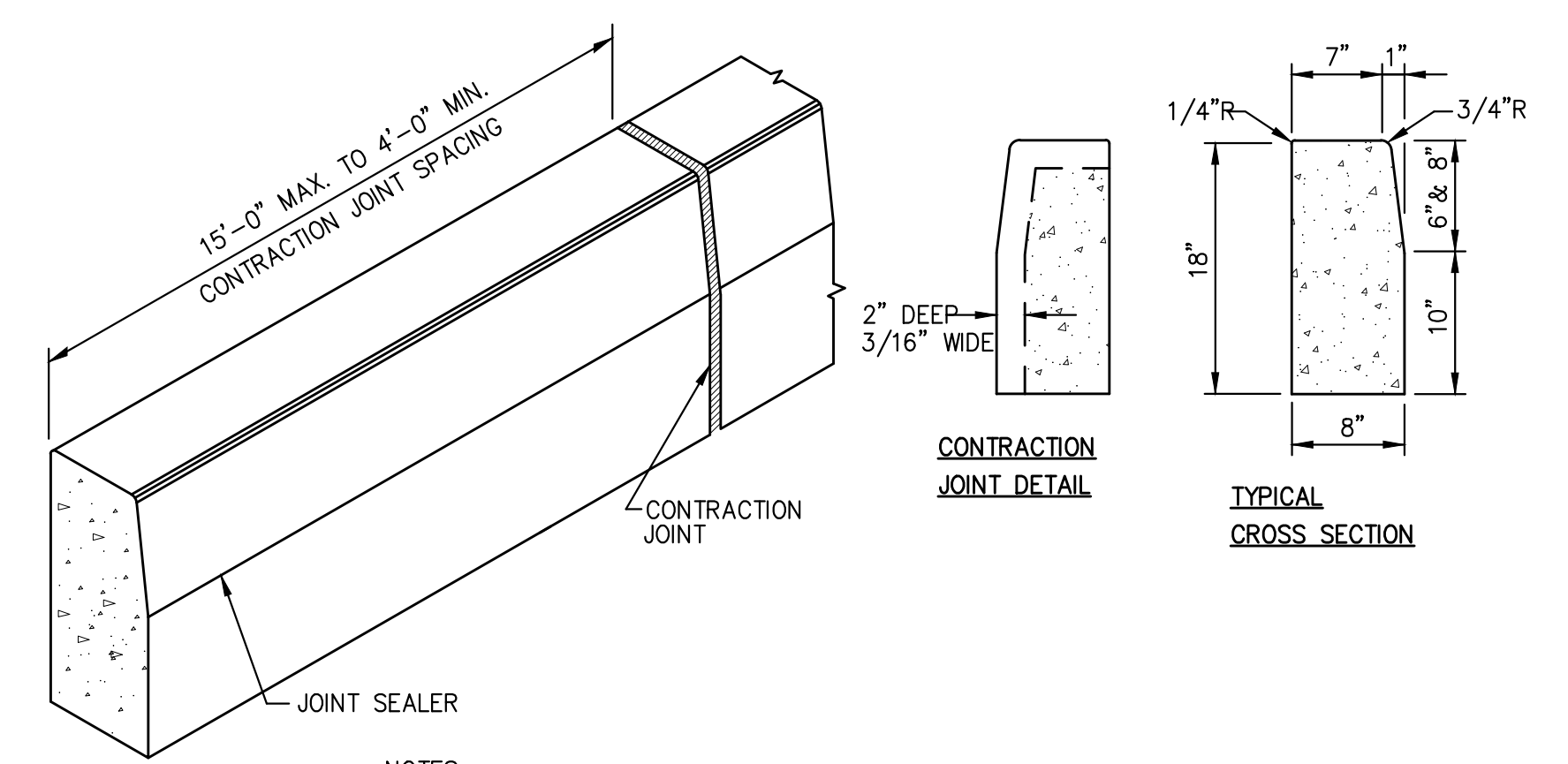
GREENMAN-PEDERSEN, INC
52 GLENMAURA NATIONAL BOULEVARD
SCRANTON, PENNSYLVANIA 18505

COMMONWEALTH OF PENNSYLVANIA
DEPARTMENT OF GENERAL SERVICES
HARRISBURG, PENNSYLVANIA

D.G.S. PROJECT No. 1576-0010 PHASE 1

SCI FRACKVILLE
ELECTRICAL UPGRADES
DEPARTMENT OF CORRECTIONS
FRACKVILLE, SCHUYLKILL COUNTY, PA

CONSTRUCTION DETAILS
DRAWN BY D. ATKINSON DATE 09/15/23 DRAWING No. C6.1
CHECKED BY J. STACHOKUS SCALE AS NOTED



- NOTES:
- PLACE 3/4" THICK PREFORMED EXPANSION JOINT FILLER MATERIAL AT STRUCTURES AND AT THE END OF THE WORK DAY. CUT MATERIAL TO CONFORM TO AREA ADJACENT TO CURB OR TO CONFORM TO CROSS SECTIONAL AREA OF CURB.
 - SPACE CONTRACTION JOINTS IN UNIFORM LENGTHS OR SECTIONS.
 - PROVIDE SEALANT AT ALL JOINTS WHERE PAVEMENT MEETS THE CURB.
 - PROVIDE CONCRETE CURB IN ACCORDANCE WITH THE MOST CURRENT VERSION OF PENNDOT RC-64M.

PLAIN CEMENT CONCRETE CURB
NOT TO SCALE

VERIFY SCALE
BAR IS ONE (1) INCH LONG ON ORIGINAL DRAWING:
0 1
IF BAR IS NOT ONE (1) INCH LONG, ADJUST SCALE ACCORDINGLY
CONTRACTOR SHALL FIELD VERIFY ALL DIMENSIONS. VARIANCE FROM CONTRACT DOCUMENTS NOT PERMITTED WITHOUT PROFESSIONAL & BUREAU OF CONSTRUCTION APPROVAL.