

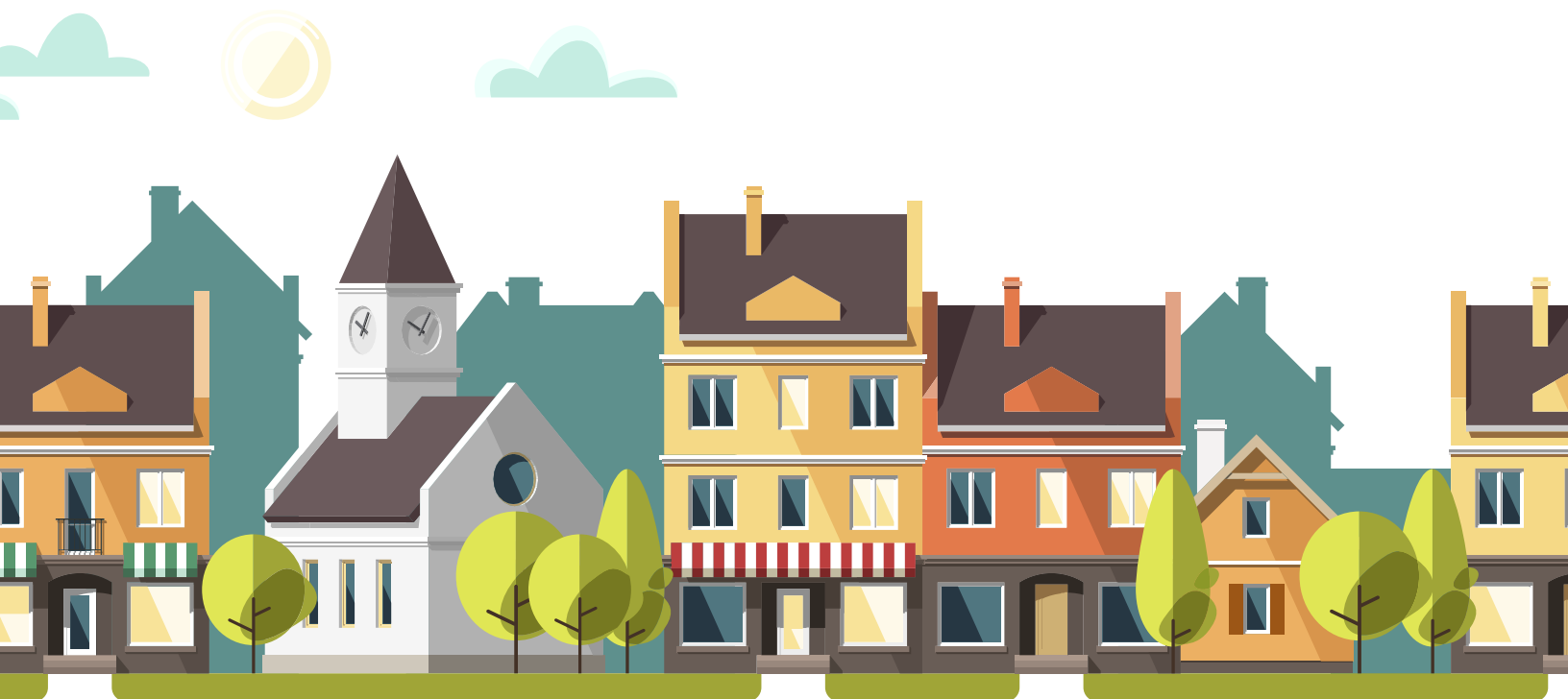


pennsylvania

DEPARTMENT OF HUMAN SERVICES

**EMERGENCY RENTAL
ASSISTANCE PROGRAM
(ERAP)**

**Monthly Report
April 2022**



April 2022 Summary Report

Month Overview

In April 2022, DHS continued to work with Guidehouse on the ERAP1 reallocation plan. With the deadline to spend all ERAP1 funds by September 30, 2022, DHS recognizes the critically important role reallocation plays in the distribution of ERAP1 funds from counties with a surplus of ERAP1 funds to counties that need additional funds to support ERAP1 applications. Woven into the ERAP1 and ERAP2 funding requirements is the importance of ERAP2 spending. ERAP2 has additional flexibilities that allow for fund expenditure for those who are impacted by the COVID-19 Public Health Emergency (PHE). The further from the March 2020 PHE declaration DHS moves, the less likely counties are able to find households who meet the qualifications set forth by ERAP1 legislation. Therefore, it is critically important to spend existing ERAP1 funds in counties that can support expenditures while simultaneously moving counties to ERAP2 funding to position Pennsylvania for any potential federal ERAP2 reallocation. DHS completed detailed analyses of historical spending patterns and future projections, issued surveys out to all counties, and met with all counties who requested to follow up further to inform the reallocation plan. DHS determined the plan will be to provide reallocated funds to the top counties prepared to facilitate full ERAP1 expenditures based upon past performance and capacity to spend before the September deadline.

- Guidehouse continues to provide direct consultation to DHS as well as the county ERAP administrators. Counties engaged with Guidehouse for technical assistance which supports best practices, training, and program administration to ensure funding is distributed to eligible Pennsylvania citizens.
- Guidehouse is also working with DHS on a monitoring plan which will outline an approach for DHS regarding the monitoring of county programs as part of an overall program accuracy review.

In April 2022:



12,218
applications
received
during the month



11,144
new households
received assistance
during the month



3,702
households
denied during
the month



113,057
applications
pending¹, as of the
end of the month

April 2022 (paid)	ERAP1	ERAP2	Total
Emergency Rental Assistance	\$20,842,798.81	\$14,748,109.31	\$35,590,908.12
Housing Stability Services	\$255,934.67	\$45,072.40	\$301,007.07
Administrative Costs	\$1,776,959.28	\$480,685.53	\$2,257,644.81
	\$22,875,692.76	\$15,273,867.24	\$38,149,560.00

Total to Date



\$509,897,741.27
Total monies paid in ERAP1 and ERAP2



129,397
Households assisted

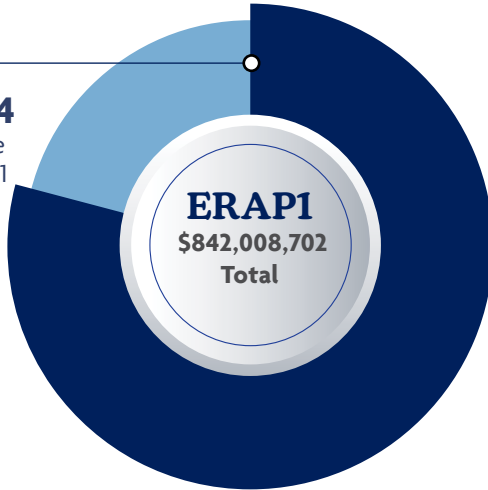
Counties have spent a total of \$509,897,741.27 in DHS-allocated ERAP funds to provide 129,397 households with rental assistance and/or housing stability services who have been impacted due to or during the COVID-19 pandemic (ERAP1 and ERAP2 combined).

NOTE: 1) The number of pending applications rate of receipt has leveled. Applications are being processed at a rate greater than the rate of applications received. Counties continue to process applications at a rate of nearly 9,000 per month. Larger counties, which receive the highest number of applications, are working to fiscally balance the program through multiple funding streams. These counties maintain ERAP1 and ERAP2 funds from both PA DHS and direct federal allocations.

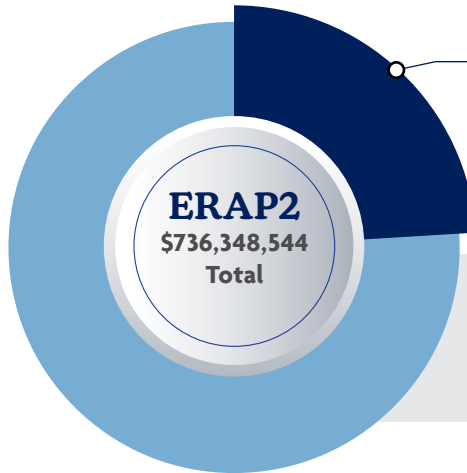




79%
\$665,114,734
was spent to date
of the total ERAP1
allocation*



24%
\$176,011,322
was spent to date
of the total ERAP2
allocation*

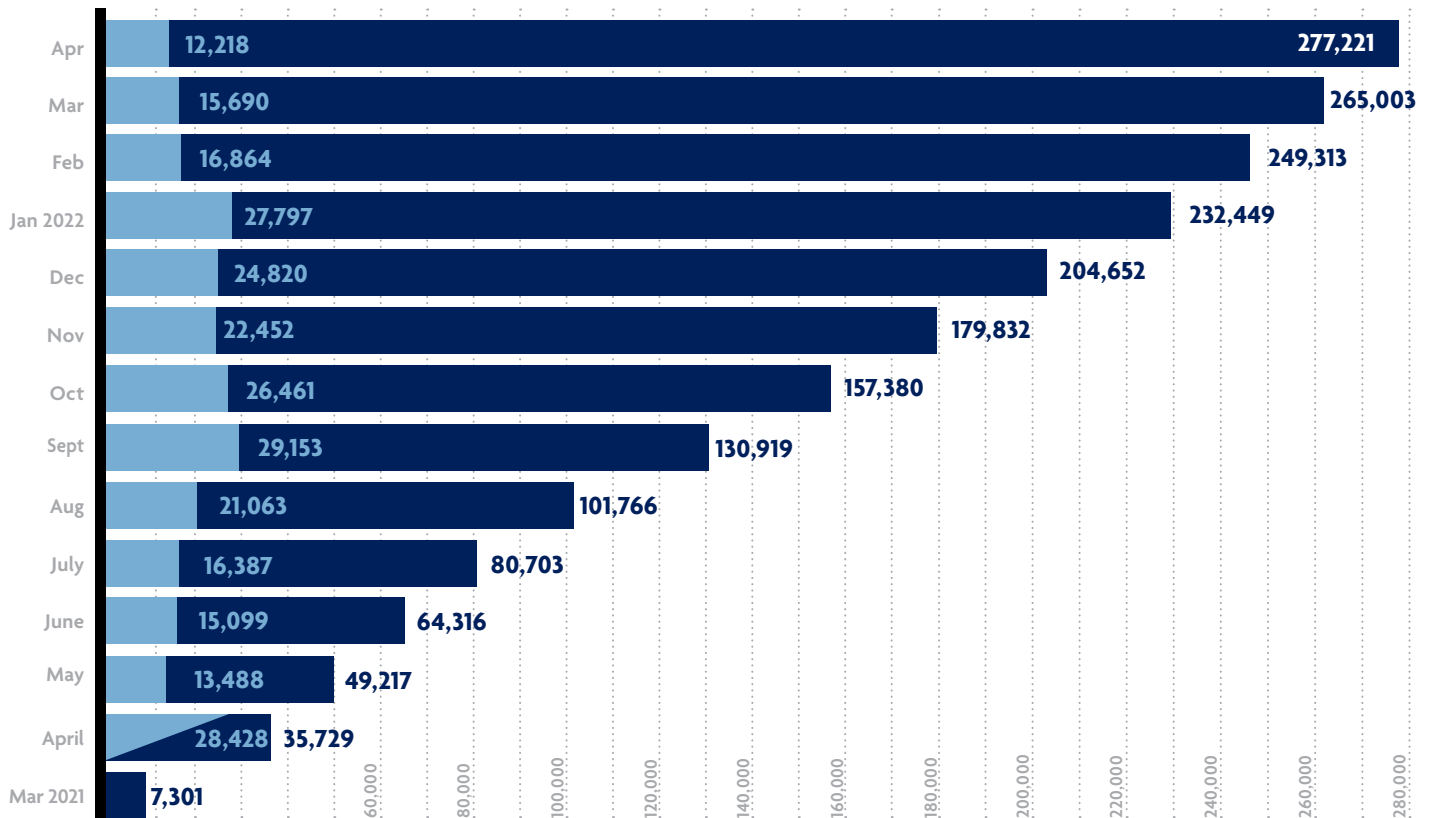


Note:
Figures include both
state and direct
federal allocations
available to counties

Total Applications Received To Date

■ Total to Date ■ Applications Received That Month

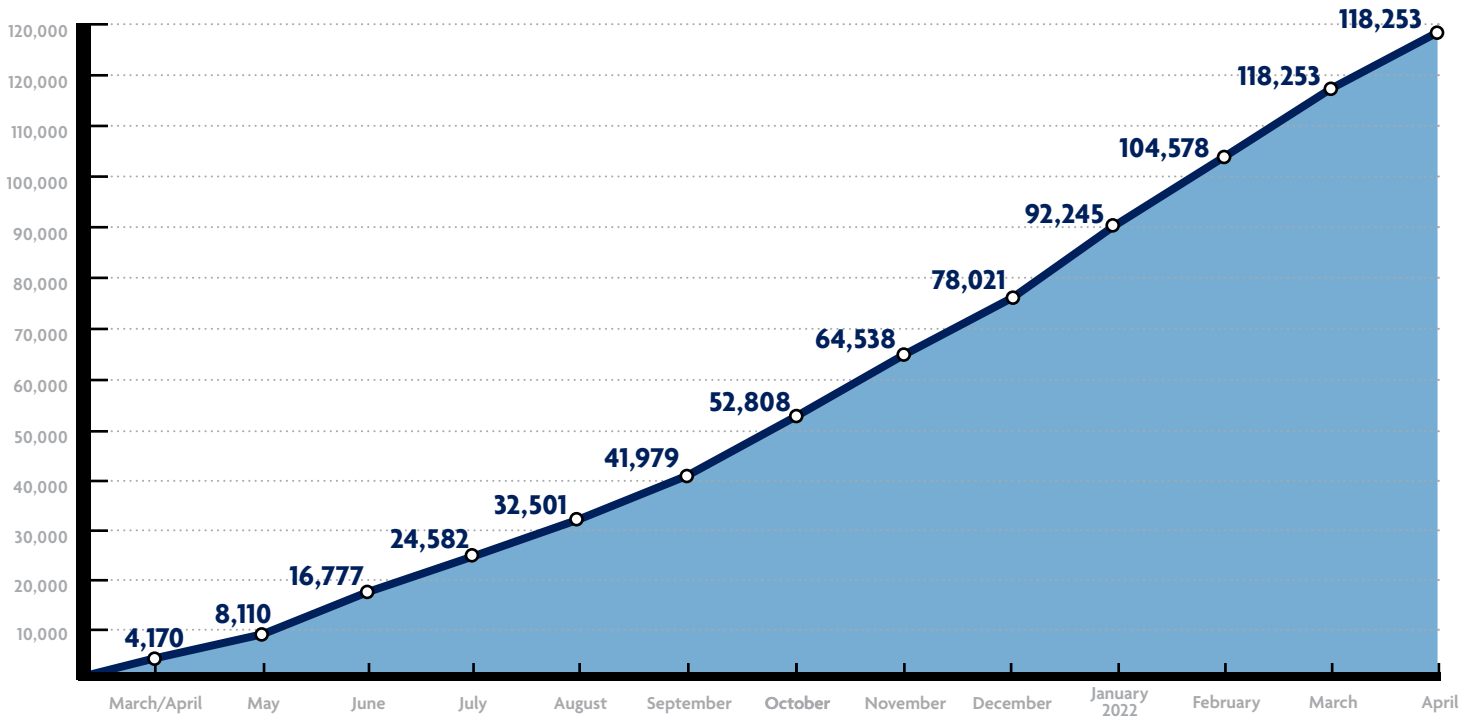
*Note: Updates have been made to previous month totals based on new information provided by the counties.





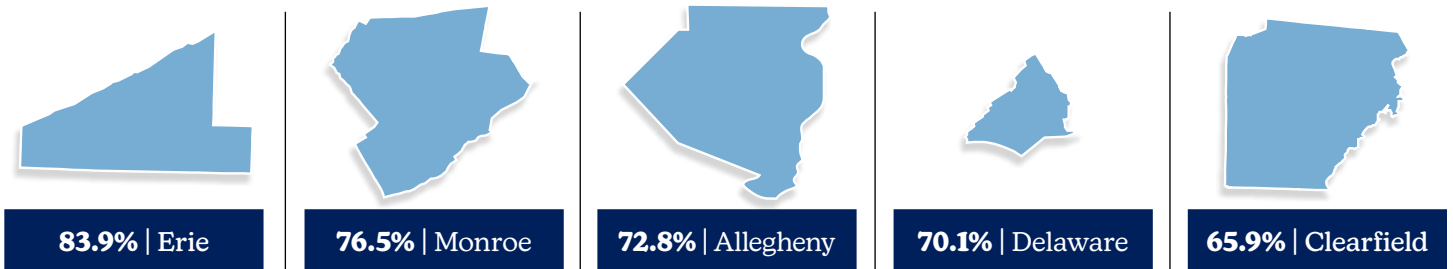
Number of households receiving services to date

*Note: Updates have been made to previous month totals based on new information provided by the counties.

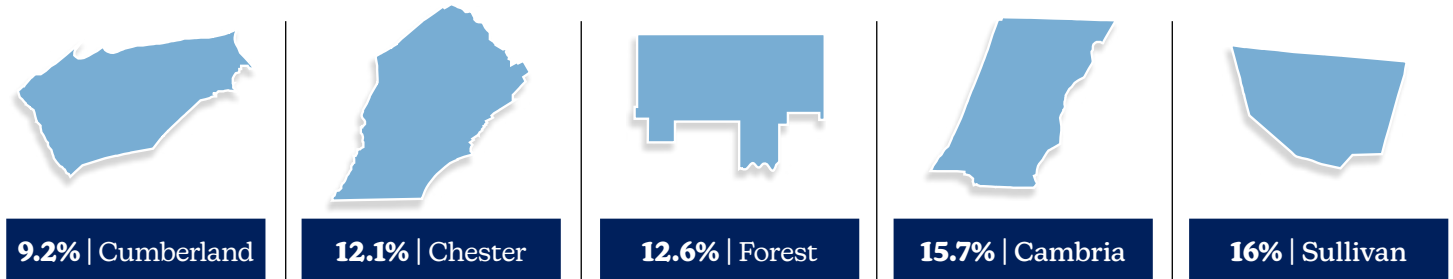


Counties

The following counties with the highest percentage of funds expended YTD are Erie (83.9%), Monroe (76.5%), Allegheny (72.8%), Delaware (70.1%), Clearfield (65.9%).



The following counties with the lowest percentage of funds expended YTD are Cumberland (9.2%), Chester (12.1%), Forest (12.6%), Cambria (15.7%), Sullivan (16.0%).





Technical Assistance Overview

DHS offered technical assistance to counties in April 2022. This assistance included quarterly and monthly reporting guidance, income determination updates and discussions, the Guidehouse training agenda, the reallocation survey, the Pandemic Health Emergency extension, using bulk verification process, the DHS Dashboard, and the Guidehouse fact-based proxy.

Stakeholder Outreach

Special Assistant to the Secretary, Stephanie Meyer, shared information and updates on ERAP with the following stakeholder groups in April: the Governor’s Advisory Council on Veterans’ Services, Office of Mental Health and Substance Abuse quarterly housing call with statewide county and provider partners, the Disaster Sheltering Task Force, and members attending the PA statewide Continuum of Care meeting.

External Communications

The DHS ERAP website saw 51,346 page views with an average time on page of 3:01. The DHS ERAP website is updated to inform applicants if the county is no longer accepting applications due to overwhelming demand and lack of remaining funds. The DHS ERAP website continues to be a valuable tool for Pennsylvanians who have questions regarding ERAP.

Reporting Update

DHS is dedicated to reporting the best possible data for ERAP. As new data is reported to DHS, this report will evolve to ensure new data is incorporated to create the best overall picture of where the program stands.



[Find more state & county level data.](#)



Background

The Department of Human Services (DHS) is pleased to submit this report, as required by Act 2021-1, Article I-D of the Fiscal Code, 72 P.S. §103-D (a)(7.1) and (8):

Powers and duties.--The department shall have the power and duty to: prepare a monthly consolidated report with information from all counties submitted under section 104-D(4) and shall submit the report on a monthly basis to the chairperson and minority chairperson of the Appropriations Committee of the Senate and the chairperson and minority chairperson of the Appropriations Committee of the House of Representatives. The report shall also be posted and maintained on the department's publicly accessible Internet website.

The report shall include the following information:

- (i) The total amount of funds received by a county.
- (ii) The total amount of funds spent by a county for services under section 102-D(a).
- (iii) The total amount of excess funding or shortfall identified by a county as of September 20, 2022.
- (iv) The total number of households that applied for assistance.
- (v) The total number of households that received assistance.
- (vi) The total amount of funding sought by services under section 102-D(a).
- (vii) The total amount of assistance provided by services under section 102-D(a).
- (viii) An itemization of all expenditures for administrative costs.

Act 1 of 2021 authorized DHS to implement the Emergency Rental Assistance Program (ERAP1). The federal Consolidated Appropriations Act of 2021, (Pub. L. 116-260) allocated \$569,807,659.70 directly to Pennsylvania to assist those affected by COVID-19 by providing funding for certain past, current and future rental and utility expenses. Of that allocation, the Pennsylvania General Assembly appropriated \$5,698,076.60 to be used by DHS for administrative costs. Funding was allocated to all counties based on percentage of population minus any direct federal allocation per Section 102-D(c) of the Act. (See Table 2 for allocations and expended/remaining funds as of September 30, 2021). A maximum of 9.09 percent of each county's allocated ERAP1 funds may be used for the combined costs of administration and housing stability services. Eighteen counties and one city received a separate allocation directly from the United States Treasury in addition to the funding allocated to them in accordance with Act 1 of 2021.

DHS officially launched ERAP1 on March 15, 2021, though not all counties were operational on that date. All counties, however, were operational and accepting applications as of March 29, 2021. (See Table 1 for application data).

PA Act 24 of 2021 amended some ERAP1 program rules, and further gives DHS authority to administer funds allocated under the federal American Rescue Plan Act of 2021 (Pub.L.117-2) Section 3201 (b) which allocated \$500,166,870.00 to Pennsylvania. These funds are referred to as ERAP2.

The total allocation amounts used in Table 4 total ERAP2 Funds column are inclusive of the high-needs funds. Initial ERAP2 allocations were released in September 2021 with subsequent disbursements made in January and February 2022. Table 3 reflects the total number of applications under ERAP2.

Definitions

DHS uses the following definitions in this report:

- Rental Assistance - includes assistance for rent arrears, current rent, future rent, and utilities included as a part of the rent payment per the rental agreement
- Utility Assistance - includes payment for utilities, utility arrearages and future utility payments not included as a part of the rent
- Other Expenses Related to Housing – includes, but is not limited to, assistance with relocation expenses, rental fees, reasonable late fees, internet for work or home schooling (at county option).
- Housing Stability Services - services provided to coordinate the activities necessary for the client to obtain or retain housing including, but not limited to, case management and other services intended to keep households stably housed

NOTE: This report reflects emergency rental assistance as implemented with funds allocated per Act 1 of 2021 and Act 24 of 2021 and does not include expenditures of funds received by local municipalities directly from the United States Treasury.

All figures below reflect self-reported data by the county as of April 30, 2022 and may reflect the county made corrections for previous months.

ERAP1

APPLICATIONS April 1 – April 30, 2022

Number of applications pending at beginning of April:	87,491
Total number of households that applied for assistance:	6,606
Total number of households that received assistance:	6,060
Total number of households denied assistance:	2,497
Total number of applications pending at end of April:	85,540

ERAP1

FISCAL April 1 – April 30, 2022

Total state funds allocated:	\$ 564,127,583.15
Total state funds remaining as of March 31, 2022:	\$ 153,944,769.81
Emergency Rental Assistance paid during April:	\$ 20,842,798.81
Rental Assistance	\$ 17,795,264.52
Utility Assistance	\$ 2,333,066.89
Other Expenses Related to Housing	\$ 714,467.40
Housing Stability Services paid during April:	\$ 255,934.67
County administrative costs paid during April:	\$ 1,776,959.28
Personnel	\$ 741,036.79
Operating	\$ 371,942.66
Purchased Services	\$ 663,979.83
Total amount paid during April:	\$ 22,875,692.76
Total amount of funds remaining (YTD):	\$ 131,069,077.05
Total amount obligated during April:	\$ 2,673,882.12
Total amount of funds remaining after obligations:	\$ 128,395,194.93

TABLE 1: ERAP1 APPLICATIONS AND DISPOSITIONS AS REPORTED BY COUNTIES
APRIL 30, 2022

County	Applications Received	Applications Approved	Applications Denied	Applications Pending
Adams	152	143	6	31
Allegheny	0	0	0	0
Armstrong	133	86	12	234
Beaver	216	107	29	593
Bedford	69	40	18	48
Berks	125	125	0	0
Blair	182	396	33	1,631
Bradford	206	76	7	244
Bucks	488	488	0	4
Butler	109	168	4	173
Cambria	84	18	78	708
Cameron	2	0	5	0
Carbon	102	89	4	13
Centre	286	224	41	384
Chester	377	82	31	1,301
Clarion	100	29	34	308
Clearfield	0	0	0	0
Clinton	0	0	234	0
Columbia	0	0	0	128
Crawford	0	17	2	20
Cumberland	0	0	0	235
Dauphin	1	2	0	85
Delaware	231	261	83	0
Elk	97	96	10	12
Erie	21	157	134	905
Fayette	0	0	0	1,063
Forest	0	0	0	1
Franklin	328	296	24	19
Fulton	21	19	6	4
Greene	0	0	0	79
Huntingdon	52	50	25	150
Indiana	144	62	114	73
Jefferson	74	50	24	127
Juniata	33	17	12	5
Lackawanna	0	0	0	784
Lancaster	564	1,107	36	4,872

TABLE 1: ERAP1 APPLICATIONS AND DISPOSITIONS AS REPORTED BY COUNTIES
APRIL 30, 2022

County	Applications Received	Applications Approved	Applications Denied	Applications Pending
Lawrence	9	33	33	254
Lebanon	100	22	14	64
Lehigh	0	0	0	0
Luzerne	0	0	0	1,367
Lycoming	2	4	6	761
McKean	43	22	21	0
Mercer	122	201	25	4
Mifflin	79	42	30	29
Monroe	53	68	52	868
Montgomery	549	278	197	689
Montour	17	25	3	46
Northampton	0	0	0	187
Northumberland	108	101	17	1,379
Perry	13	13	0	0
Philadelphia	0	8	822	63,179
Pike	50	44	9	28
Potter	4	4	0	10
Schuylkill	179	182	18	49
Snyder	51	36	14	45
Somerset	0	0	0	221
Sullivan	1	0	0	1
Susquehanna	36	22	15	82
Tioga	52	16	11	88
Union	51	40	8	47
Venango	48	30	36	52
Warren	32	21	2	20
Washington	379	357	28	55
Wayne	26	10	2	66
Westmoreland	399	259	126	145
Wyoming	6	17	2	30
York	0	0	0	1,540
State Total	6,606	6,060	2,497	85,540

*Shaded counties did not report any data.

TABLE 2: ERAP1 ALLOCATIONS AND EXPENDED FUNDS AS REPORTED BY COUNTIES
APRIL 30, 2022

County	Amount of Direct Federal Allocation Received	DHS Allocation	DHS funds Expended April 1 - 30	DHS funds Remaining YTD	DHS funds Obligated April 1 - 30	DHS Allocation after Obligations
Adams	\$0	\$6,774,933.20	\$395,402.79	\$1,661,866.49	\$0.00	\$1,661,866.49
Allegheny	\$36,234,405.90	\$50,660,409.18	\$0.00	\$0.00	\$0.00	\$0.00
Armstrong	\$0	\$4,257,640.60	\$307,270.03	\$3,659.91	\$0.00	\$3,659.91
Beaver	\$0	\$10,781,660.09	\$343,548.45	\$1,577,591.84	\$13,667.52	\$1,563,924.32
Bedford	\$0	\$3,149,608.30	\$121,170.41	\$1,855,050.27	\$0.00	\$1,855,050.27
Berks	\$12,549,393.60	\$17,545,683.39	\$843,134.64	\$3,861,360.01	\$0.00	\$3,861,360.01
Blair	\$0	\$8,012,730.31	\$716,137.89	\$1,184,151.30	\$134,295.65	\$1,049,855.65
Bradford	\$0	\$4,219,461.26	\$262,695.08	\$1,527,161.56	\$0.00	\$1,527,161.56
Bucks [#]	\$18,720,516.20	\$22,969,300.51	\$2,448,187.52	\$10,019,542.40	\$0.00	\$10,019,542.40
Butler [#]	\$0	\$8,512,144.83	\$587,785.07	\$1,865,572.10	\$0.00	\$1,865,572.10
Cambria	\$0	\$9,303,117.71	\$116,253.44	\$6,746,103.68	\$0.00	\$6,746,103.68
Cameron [#]	\$0	\$317,768.87	\$0.00	\$25,267.31	\$0.00	\$25,267.31
Carbon ^{**}	\$0	\$2,953,125.00	\$0.00	\$0.00	\$0.00	\$0.00
Centre	\$0	\$11,603,529.93	\$823,874.63	\$2,431,207.67	\$0.00	\$2,431,207.67
Chester [#]	\$15,643,059.70	\$18,885,626.18	\$495,835.47	\$15,184,758.80	\$0.00	\$15,184,758.80
Clarion	\$0	\$2,528,078.93	\$191,695.26	\$248,028.96	\$0.00	\$248,028.96
Clearfield [#]	\$0	\$5,212,625.41	\$0.00	\$0.00	\$0.00	\$0.00
Clinton [#]	\$0	\$2,064,599.81	\$0.00	\$0.00	\$0.00	\$0.00
Columbia	\$0	\$4,272,702.00	\$0.00	\$608,524.72	\$0.00	\$608,524.72
Crawford	\$0	\$6,047,326.63	\$405,663.60	\$157,369.81	\$27,797.71	\$129,572.10
Cumberland	\$7,549,647.80	\$1,590,441.00	\$0.00	\$742,376.91	\$0.00	\$742,376.91
Dauphin	\$8,292,455.40	\$10,011,354.30	\$43,726.11	\$2,100,185.51	\$0.00	\$2,100,185.51
Delaware [#]	\$16,887,319.80	\$23,610,668.16	\$1,762,405.95	\$2,046,736.97	\$1,622,553.00	\$424,183.97
Elk [#]	\$0	\$1,872,456.78	\$129,204.69	\$392,096.81	\$0.00	\$392,096.81
Erie [#]	\$8,037,065.90	\$11,236,862.85	\$778,662.44	\$836,384.91	\$0.00	\$836,384.91

TABLE 2: ERAP1 ALLOCATIONS AND EXPENDED FUNDS AS REPORTED BY COUNTIES
APRIL 30, 2022

County	Amount of Direct Federal Allocation Received	DHS Allocation	DHS funds Expended April 1 - 30	DHS funds Remaining YTD	DHS funds Obligated April 1 - 30	DHS Allocation after Obligations
Fayette	\$0	\$6,004,494.75	\$0.00	\$2,079,917.54	\$0.00	\$2,079,917.54
Forest	\$0	\$77,650.67	\$0.00	\$26,021.23	\$0.00	\$26,021.23
Franklin [#]	\$0	\$11,077,750.00	\$784,419.23	\$109,610.22	\$0.00	\$109,610.22
Fulton	\$0	\$955,642.51	\$60,609.77	\$217,712.58	\$0.00	\$217,712.58
Greene	\$0	\$1,796,402.94	\$0.00	\$916,497.71	\$0.00	\$916,497.71
Huntingdon [#]	\$0	\$2,969,134.58	\$146,165.54	\$1,208,259.08	\$11,962.37	\$1,196,296.71
Indiana [#]	\$0	\$2,036,291.42	\$122,669.90	\$714,288.82	\$32,492.97	\$681,795.85
Jefferson [#]	\$0	\$2,434,456.74	\$151,181.73	\$611,750.20	\$0.00	\$611,750.20
Juniata [#]	\$0	\$796,467.24	\$57,711.85	\$439,588.38	\$4,093.33	\$435,495.05
Lackawanna	\$6,247,641.20	\$7,542,681.42	\$0.00	\$2,018,090.71	\$0.00	\$2,018,090.71
Lancaster	\$16,260,899.00	\$19,631,534.12	\$3,195,501.19	\$6,555,729.62	\$0.00	\$6,555,729.62
Lawrence [#]	\$0	\$5,624,150.19	\$132,884.64	\$2,328,297.70	\$42,478.58	\$2,285,819.12
Lebanon	\$0	\$6,155,579.72	\$70,600.57	\$1,200,388.30	\$0.00	\$1,200,388.30
Lehigh [#]	\$11,004,542.00	\$14,570,969.34	\$184,619.79	\$3,720,513.28	\$0.00	\$3,720,513.28
Luzerne	\$9,458,051.60	\$13,223,585.60	\$0.00	\$4,804,949.45	\$0.00	\$4,804,949.45
Lycoming [#]	\$0	\$7,451,709.62	\$90.00	\$0.27	\$0.00	\$0.27
McKean	\$0	\$2,671,918.58	\$35,859.06	\$1,242,953.66	\$0.00	\$1,242,953.66
Mercer	\$0	\$7,196,849.69	\$657,571.96	\$1,159,573.57	\$124,102.93	\$1,035,470.64
Mifflin [#]	\$0	\$2,603,673.26	\$161,386.52	\$857,090.52	\$5,349.13	\$851,741.39
Monroe	\$0	\$12,167,039.10	\$396,786.86	\$250,145.23	\$0.00	\$250,145.23
Montgomery [#]	\$24,758,714.80	\$29,890,816.95	\$1,970,140.01	\$7,924,394.91	\$0.00	\$7,924,394.91
Montour [#]	\$0	\$1,239,211.35	\$68,708.34	\$585,005.21	\$0.00	\$585,005.21
Northampton [#]	\$9,096,555.30	\$10,111,500.96	\$0.00	\$1,422,359.03	\$0.00	\$1,422,359.03
Northumberland [#]	\$0	\$6,491,359.85	\$407,278.42	\$489,277.26	\$0.00	\$489,277.26
Perry	\$0	\$1,574,257.34	\$42,447.87	\$809,441.56	\$0.00	\$809,441.56

TABLE 2: ERAP1 ALLOCATIONS AND EXPENDED FUNDS AS REPORTED BY COUNTIES
APRIL 30, 2022

County	Amount of Direct Federal Allocation Received	DHS Allocation	DHS funds Expended April 1 - 30	DHS funds Remaining YTD	DHS funds Obligated April 1 - 30	DHS Allocation after Obligations
Philadelphia [#]	\$47,200,241.70	\$65,992,073.02	\$389,814.87	\$13,466,699.95	\$12,060.08	\$13,454,639.87
Pike	\$0	\$3,670,574.87	\$167,598.42	\$1,056,000.76	\$243,938.04	\$812,062.72
Potter [#]	\$0	\$566,119.02	\$7,372.85	\$228,933.94	\$0.00	\$228,933.94
Schuylkill	\$0	\$9,297,224.34	\$650,900.99	\$830,402.62	\$0.00	\$830,402.62
Snyder	\$0	\$2,655,278.69	\$183,633.37	\$1,065,255.69	\$25,991.90	\$1,039,263.79
Somerset [#]	\$0	\$3,933,146.65	\$0.00	\$1,197,428.34	\$0.00	\$1,197,428.34
Sullivan	\$0	\$310,229.54	\$0.00	\$208,753.24	\$0.00	\$208,753.24
Susquehanna [#]	\$0	\$2,154,881.10	\$62,619.00	\$1,015,557.26	\$0.00	\$1,015,557.26
Tioga [#]	\$0	\$1,669,768.02	\$41,316.26	\$776,332.04	\$23,842.41	\$752,489.63
Union	\$0	\$2,954,599.35	\$189,583.35	\$1,250,635.74	\$19,535.67	\$1,231,100.07
Venango	\$0	\$2,642,130.67	\$126,942.98	\$231,030.94	\$12,933.19	\$218,097.75
Warren	\$0	\$2,075,522.86	\$67,258.84	\$318,046.93	\$0.00	\$318,046.93
Washington	\$6,163,941.60	\$7,441,632.24	\$525,311.71	\$3,840,965.18	\$309,529.84	\$3,531,435.34
Wayne [#]	\$0	\$2,013,493.21	\$54,026.39	\$984,766.07	\$7,257.80	\$977,508.27
Westmoreland	\$10,396,118.50	\$12,643,638.56	\$938,124.42	\$3,071,359.02	\$0.00	\$3,071,359.02
Wyoming	\$0	\$710,540.98	\$51,902.59	\$281,837.16	\$0.00	\$281,837.16
York	\$13,380,549.10	\$18,707,746.86	\$0.00	\$4,478,218.19	\$0.00	\$4,478,218.19
State Total	\$277,881,119.10	\$564,127,583.15	\$22,875,692.76	\$131,069,077.05	\$2,673,882.12	\$128,395,194.93

**Shaded counties did not report any DHS ERAP1 funds paid or obligated in the month of April.*

*** DHS is working with counties that reported spending in excess of the DHS allocation or had data reporting errors.*

Counties submitted revised historical ERAP1 spending. Current amounts represent more accurate YTD spending and allocations remaining.

ERAP2

APPLICATIONS: April 1 – April 30, 2022

Number of applications pending at beginning of April:	28,194
Total number of households that applied for assistance:	5,612
Total number of households that received assistance:	5,084
Total number of households denied assistance:	1,205
Total number of applications pending at end of April:	27,517

ERAP2

FISCAL: April 1 – April 30, 2022

Total state funds allocated:	\$ 473,831,607.58
Total state funds remaining as of March 31, 2022:	\$ 412,266,239.65
Emergency Rental Assistance paid during April:	\$ 14,748,109.31
Rental Assistance	\$ 13,301,362.50
Utility Assistance	\$ 1,180,689.71
Other Expenses Related to Housing	\$ 266,057.10
Housing Stability Services paid during April:	\$ 45,072.40
County administrative costs paid during April:	\$ 480,685.53
Personnel	\$ 85,003.55
Operating	\$ 130,516.75
Purchased Services	\$ 265,165.23
Total amount paid during April:	\$ 15,273,867.24
Total amount of funds remaining (YTD):	\$ 396,992,372.41
Total amount obligated during April:	\$ 5,066,088.45
Total amount of funds remaining after obligations:	\$ 391,926,283.96

TABLE 3: ERAP2 APPLICATIONS AND DISPOSITIONS AS REPORTED BY COUNTIES
MARCH 1-28, 2021

County	Applications Received	Applications Approved	Applications Denied	Applications Pending
Adams	22	23	3	16
Allegheny	2,449	3,330	0	1,387
Armstrong	16	16	0	0
Beaver	3	3	0	0
Bedford	0	0	0	0
Berks	0	0	0	0
Blair	0	0	0	0
Bradford	47	34	1	74
Bucks	239	239	0	19
Butler	15	15	0	0
Cambria	0	0	0	0
Cameron	0	0	6	0
Carbon	0	0	0	0
Centre	33	33	0	0
Chester	15	15	0	0
Clarion	41	41	0	0
Clearfield	298	101	197	0
Clinton	0	0	0	9
Columbia	241	65	15	161
Crawford	121	144	0	100
Cumberland	0	0	0	0
Dauphin	38	35	0	1,678
Delaware	429	31	12	2,018
Elk	20	20	0	0
Erie	0	0	0	165
Fayette	63	63	0	0
Forest	3	1	0	3
Franklin	85	72	3	19
Fulton	0	0	0	0
Greene	44	11	0	33
Huntingdon	1	1	0	0
Indiana	22	23	0	17
Jefferson	15	15	0	0
Juniata	0	0	0	0

TABLE 3: ERAP2 APPLICATIONS AND DISPOSITIONS AS REPORTED BY COUNTIES
MARCH 1-31, 2021

County	Applications Received	Applications Approved	Applications Denied	Applications Pending
Lackawanna	32	30	2	0
Lancaster	0	0	0	0
Lawrence	12	19	0	4
Lebanon	1	1	0	0
Lehigh	345	228	7	1,462
Luzerne	0	0	0	0
Lycoming	294	75	29	394
McKean	0	0	0	0
Mercer	0	0	0	0
Mifflin	20	17	0	4
Monroe	71	125	85	395
Montgomery	371	148	20	227
Montour	0	0	0	0
Northampton	0	0	0	0
Northumberland	0	0	0	0
Perry	17	17	0	0
Philadelphia	0	5	822	19,127
Pike	21	22	0	0
Potter	8	7	0	2
Schuylkill	0	0	0	0
Snyder	11	11	0	0
Somerset	91	7	0	168
Sullivan	0	0	0	0
Susquehanna	0	0	0	0
Tioga	6	6	0	0
Union	9	9	0	0
Venango	3	3	0	0
Warren	16	11	2	5
Washington	0	0	0	0
Wayne	22	10	1	30
Westmoreland	0	0	0	0
Wyoming	2	2	0	0
York	0	0	0	0
State Total	5,612	5,084	1,205	27,517

*Shaded counties did not report any data.

TABLE 4: ERAP2 ALLOCATIONS AND EXPENDED FUNDS AS REPORTED BY COUNTIES
APRIL 30, 2022

County	Amount of Direct Federal Allocation Received	TOTAL ERAP2 Funds	DHS funds Paid April 1 - 30	DHS funds Remaining YTD	DHS funds Obligated April 1 - 30	DHS Allocation after Obligations
Adams	\$0	\$5,522,552.63	\$38,288.99	\$5,307,719.77	\$0.00	\$5,307,719.77
Allegheny	\$39,672,916.30	\$37,918,216.04	\$6,610,820.93	\$24,091,256.29	\$3,535,000.00	\$20,556,256.29
Armstrong	\$0	\$3,470,594.26	\$40,447.53	\$3,384,201.42	\$0.00	\$3,384,201.42
Beaver	\$0	\$9,073,565.53	\$2,817.74	\$9,050,714.22	\$446.18	\$9,050,268.04
Bedford	\$0	\$2,567,387.31	\$0.00	\$2,560,992.60	\$0.00	\$2,560,992.60
Berks	\$12,656,511.90	\$12,711,796.54	\$0.00	\$12,711,796.54	\$0.00	\$12,711,796.54
Blair	\$0	\$6,531,536.71	\$473.56	\$6,530,937.66	\$0.00	\$6,530,937.66
Bradford	\$0	\$3,234,056.67	\$155,215.45	\$2,420,098.00	\$0.00	\$2,420,098.00
Bucks	\$14,812,668.30	\$18,870,351.04	\$1,035,405.13	\$13,955,820.69	\$0.00	\$13,955,820.69
Butler	\$0	\$10,071,237.26	\$20,839.98	\$10,019,969.10	\$0.00	\$10,019,969.10
Cambria	\$0	\$6,979,896.63	\$0.00	\$6,977,650.98	\$0.00	\$6,977,650.98
Cameron	\$0	\$238,414.03	\$0.00	\$190,744.16	\$0.00	\$190,744.16
Carbon	\$0	\$3,440,946.64	\$0.00	\$3,440,946.64	\$0.00	\$3,440,946.64
Centre	\$0	\$8,705,838.41	\$74,210.03	\$8,490,819.63	\$0.00	\$8,490,819.63
Chester	\$12,377,621.00	\$15,768,263.16	\$19,760.00	\$15,262,660.90	\$0.00	\$15,262,660.90
Clarion	\$0	\$2,060,750.79	\$427,087.36	\$1,324,067.23	\$12,621.36	\$1,311,445.87
Clearfield	\$0	\$4,371,518.09	\$456,219.47	\$3,266,817.10	\$59,730.63	\$3,207,086.47
Clinton	\$0	\$2,071,151.58	\$0.00	\$1,882,863.27	\$0.00	\$1,882,863.27
Columbia	\$0	\$3,482,871.49	\$194,126.29	\$3,112,156.74	\$0.00	\$3,112,156.74
Crawford	\$0	\$4,690,704.59	\$616,202.69	\$3,789,302.60	\$551,094.34	\$3,238,208.26
Cumberland	\$5,973,682.90	\$7,610,073.47	\$0.00	\$7,610,073.47	\$0.00	\$7,610,073.47
Dauphin	\$6,561,431.80	\$8,358,826.37	\$190,115.71	\$7,745,553.74	\$60,670.19	\$7,684,883.55
Delaware	\$13,362,145.80	\$18,403,581.37	\$278,531.56	\$10,533,687.46	\$247,605.00	\$10,286,082.46
Elk	\$0	\$1,603,544.83	\$14,223.40	\$1,553,342.99	\$0.00	\$1,553,342.99

TABLE 4: ERAP2 ALLOCATIONS AND EXPENDED FUNDS AS REPORTED BY COUNTIES
 APRIL 30, 2022

County	Amount of Direct Federal Allocation Received	TOTAL ERAP2 Funds	DHS funds Paid April 1 - 30	DHS funds Remaining YTD	DHS funds Obligated April 1 - 30	DHS Allocation after Obligations
Erie	\$6,359,354.10	\$8,868,943.54	\$0.00	\$2,392,753.95	\$0.00	\$2,392,753.95
Fayette	\$0	\$6,930,680.51	\$106,101.89	\$6,701,994.90	\$229,750.54	\$6,472,244.36
Forest	\$0	\$388,528.57	\$1,273.28	\$381,398.73	\$0.00	\$381,398.73
Franklin	\$0	\$8,311,358.88	\$176,903.06	\$7,807,294.92	\$0.00	\$7,807,294.92
Fulton	\$0	\$778,987.18	\$0.00	\$776,624.68	\$0.00	\$776,624.68
Greene	\$0	\$1,942,535.60	\$36,608.61	\$1,905,926.99	\$0.00	\$1,905,926.99
Huntingdon	\$0	\$2,420,275.08	\$2,969.00	\$2,417,306.08	\$0.00	\$2,417,306.08
Indiana	\$0	\$4,507,349.52	\$42,442.12	\$4,422,244.04	\$11,372.52	\$4,410,871.52
Jefferson	\$0	\$2,328,115.48	\$38,899.79	\$2,191,475.11	\$0.00	\$2,191,475.11
Juniata	\$0	\$1,327,602.16	\$0.00	\$1,324,428.53	\$1,042.00	\$1,323,386.53
Lackawanna	\$4,943,466.10	\$6,911,285.49	\$318,851.20	\$6,472,749.50	\$244,739.00	\$6,228,010.50
Lancaster	\$12,866,488.30	\$16,391,047.56	\$0.00	\$16,391,047.56	\$0.00	\$16,391,047.56
Lawrence	\$0	\$4,584,497.67	\$101,524.43	\$3,996,921.89	\$35,615.40	\$3,961,306.49
Lebanon	\$0	\$7,601,853.29	\$5,100.00	\$7,589,629.51	\$0.00	\$7,589,629.51
Lehigh	\$11,788,108.60	\$10,353,867.30	\$1,759,660.39	\$6,619,494.69	\$0.00	\$6,619,494.69
Luzerne	\$7,483,713.60	\$9,533,751.75	\$0.00	\$9,533,751.75	\$0.00	\$9,533,751.75
Lycoming	\$0	\$6,368,012.39	\$415,519.74	\$4,878,734.79	\$0.00	\$4,878,734.79
McKean	\$0	\$2,178,000.96	\$0.00	\$2,178,000.96	\$0.00	\$2,178,000.96
Mercer	\$0	\$5,866,475.73	\$0.00	\$5,866,475.73	\$0.00	\$5,866,475.73
Mifflin	\$0	\$2,473,565.74	\$24,501.07	\$2,410,819.13	\$4,809.00	\$2,406,010.13
Monroe	\$0	\$9,465,060.89	\$696,344.15	\$4,834,642.25	\$0.00	\$4,834,642.25
Montgomery	\$24,379,049.70	\$23,294,785.70	\$732,494.44	\$22,468,085.54	\$0.00	\$22,468,085.54
Montour	\$0	\$977,352.80	\$0.00	\$977,352.80	\$0.00	\$977,352.80
Northampton	\$7,197,678.50	\$9,169,362.04	\$0.00	\$8,354,368.57	\$0.00	\$8,354,368.57

TABLE 4: ERAP2 ALLOCATIONS AND EXPENDED FUNDS AS REPORTED BY COUNTIES
APRIL 30, 2022

County	Amount of Direct Federal Allocation Received	TOTAL ERAP2 Funds	DHS funds Paid April 1 - 30	DHS funds Remaining YTD	DHS funds Obligated April 1 - 30	DHS Allocation after Obligations
Northumberland	\$0	\$4,870,305.01	\$0.00	\$4,870,305.01	\$0.00	\$4,870,305.01
Perry	\$0	\$2,480,749.79	\$49,184.06	\$2,339,044.51	\$0.00	\$2,339,044.51
Philadelphia	\$58,391,497.30	\$51,829,294.08	\$302,243.97	\$28,633,983.49	\$15,713.00	\$28,618,270.49
Pike	\$0	\$3,093,837.86	\$96,937.87	\$2,881,435.63	\$23,119.11	\$2,858,316.52
Potter	\$0	\$885,997.39	\$12,199.65	\$798,400.77	\$1,410.00	\$796,990.77
Schuylkill	\$0	\$7,578,585.53	\$0.00	\$7,578,585.53	\$0.00	\$7,578,585.53
Snyder	\$0	\$2,164,437.03	\$21,981.77	\$2,099,172.60	\$6,843.15	\$2,092,329.45
Somerset	\$0	\$3,937,664.89	\$30,060.47	\$3,840,156.75	\$0.00	\$3,840,156.75
Sullivan	\$0	\$325,212.39	\$0.00	\$325,212.39	\$0.00	\$325,212.39
Susquehanna	\$0	\$2,162,078.10	\$0.00	\$2,162,078.10	\$0.00	\$2,162,078.10
Tioga	\$0	\$2,176,178.14	\$21,352.95	\$2,101,802.59	\$16,075.77	\$2,085,726.82
Union	\$0	\$2,408,426.76	\$33,761.16	\$2,329,337.61	\$4,037.26	\$2,325,300.35
Venango	\$0	\$2,716,429.60	\$3,758.20	\$2,712,171.40	\$789.00	\$2,711,382.40
Warren	\$0	\$2,101,120.88	\$39,844.29	\$2,046,989.35	\$0.00	\$2,046,989.35
Washington	\$4,877,238.50	\$6,213,276.40	\$0.00	\$6,213,276.40	\$0.00	\$6,213,276.40
Wayne	\$0	\$2,753,582.95	\$25,815.02	\$2,556,886.71	\$3,605.00	\$2,553,281.71
Westmoreland	\$8,225,962.00	\$10,479,326.76	\$0.00	\$10,479,326.76	\$0.00	\$10,479,326.76
Wyoming	\$0	\$1,436,488.81	\$2,748.84	\$1,428,847.07	\$0.00	\$1,428,847.07
York	\$10,587,402.30	\$13,487,643.94	\$0.00	\$13,487,643.94	\$0.00	\$13,487,643.94
State Total	\$ 262,516,937.00	\$ 473,831,607.58	\$15,273,867.24	\$396,992,372.41	\$5,066,088.45	\$391,926,283.96

*Shaded counties did not report any DHS ERAP2 funds paid or obligated in the month of April.

ERAP Program Summary

The following tables provide a look at the application totals and expenditures for both ERAP1 and ERAP2 for the month of April 2022. These totals may be adjusted as information is updated from the counties; however, it is being provided to show the total monthly numbers across both programs.

APPLICATIONS: April 1 – April 30, 2022

Number of applications pending at beginning of April:	115,685
Total number of households that applied for assistance:	12,218
Total number of households that received assistance:	11,144
Total number of households denied assistance:	3,702
Total number of applications pending at end of April:	113,057

FISCAL: April 1 – April 30, 2022

Total state funds allocated:	\$ 1,037,959,190.73
Total state funds remaining as of March 31, 2022:	\$ 566,211,009.46
Emergency Rental Assistance paid during April:	\$ 35,590,908.12
Rental Assistance	\$ 31,096,627.02
Utility Assistance	\$ 3,513,756.60
Other Expenses Related to Housing	\$ 980,524.50
Housing Stability Services paid during April:	\$ 301,007.07
County administrative costs paid during April:	\$ 2,257,644.81
Personnel	\$ 826,040.34
Operating	\$ 502,459.41
Purchased Services	\$ 929,145.06
Total amount paid during April:	\$ 38,149,560.00
Total amount of funds remaining (YTD):	\$ 528,061,449.46
Total amount obligated during April:	\$ 7,739,970.57
Total amount of funds remaining after obligations:	\$ 520,321,478.89

**These numbers include applications reported by counties that received a direct allocation from the U.S. Treasury but did not expend any DHS allocated funds*

TABLE 5: COMBINED ERAP1 AND ERAP2 APPLICATIONS AND DISPOSITIONS AS REPORTED BY COUNTIES
 APRIL 30, 2022

County	Applications Received	Applications Approved	Applications Denied	Applications Pending
Adams	174	166	9	47
Allegheny	2,449	3,330	0	1,387
Armstrong	149	102	12	234
Beaver	219	110	29	593
Bedford	69	40	18	48
Berks	125	125	0	0
Blair	182	396	33	1,631
Bradford	253	110	8	318
Bucks	727	727	0	23
Butler	124	183	4	173
Cambria	84	18	78	708
Cameron	2	0	11	0
Carbon	102	89	4	13
Centre	319	257	41	384
Chester	392	97	31	1,301
Clarion	141	70	34	308
Clearfield	298	101	197	0
Clinton	0	0	234	9
Columbia	241	65	15	289
Crawford	121	161	2	120
Cumberland	0	0	0	235
Dauphin	39	37	0	1,763
Delaware	660	292	95	2,018
Elk	117	116	10	12
Erie	21	157	134	1,070
Fayette	63	63	0	1,063
Forest	3	1	0	4
Franklin	413	368	27	38
Fulton	21	19	6	4
Greene	44	11	0	112
Huntingdon	53	51	25	150
Indiana	166	85	114	90
Jefferson	89	65	24	127
Juniata	33	17	12	5
Lackawanna	32	30	2	784
Lancaster	564	1,107	36	4,872
Lawrence	21	52	33	258
Lebanon	101	23	14	64

TABLE 5: COMBINED ERAP1 AND ERAP2 APPLICATIONS AND DISPOSITIONS AS REPORTED BY COUNTIES
 APRIL 30, 2022

County	Applications Received	Applications Approved	Applications Denied	Applications Pending
Lehigh	345	228	7	1,462
Luzerne	0	0	0	1,367
Lycoming	296	79	35	1,155
McKean	43	22	21	0
Mercer	122	201	25	4
Mifflin	99	59	30	33
Monroe	124	193	137	1,263
Montgomery	920	426	217	916
Montour	17	25	3	46
Northampton	0	0	0	187
Northumberland	108	101	17	1,379
Perry	30	30	0	0
Philadelphia	0	13	1,644	82,306
Pike	71	66	9	28
Potter	12	11	0	12
Schuylkill	179	182	18	49
Snyder	62	47	14	45
Somerset	91	7	0	389
Sullivan	1	0	0	1
Susquehanna	36	22	15	82
Tioga	58	22	11	88
Union	60	49	8	47
Venango	51	33	36	52
Warren	48	32	4	25
Washington	379	357	28	55
Wayne	48	20	3	96
Westmoreland	399	259	126	145
Wyoming	8	19	2	30
York	0	0	0	1,540
State Total	12,218	11,144	3,702	113,057

**Shaded counties did not report any data.*

TABLE 6: COMBINED ERAP1 and ERAP2 ALLOCATIONS AND EXPENDED FUNDS
AS REPORTED BY COUNTIES — APRIL 30, 2022

County	TOTAL ERAP Direct Federal Allocation	DHS Allocation ERAP1 & ERAP2	DHS ERAP1 & 2 funds Paid April 1 - 30	DHS funds Remaining YTD	DHS funds Obligated April 1 - 30	DHS Allocation after Obligations
Adams	\$0	\$12,297,485.83	\$433,691.78	\$6,969,586.26	\$0.00	\$6,969,586.26
Allegheny	\$75,907,322.20	\$88,578,625.22	\$6,610,820.93	\$24,091,256.29	\$3,535,000.00	\$20,556,256.29
Armstrong	\$0	\$7,728,234.86	\$347,717.56	\$3,387,861.33	\$0.00	\$3,387,861.33
Beaver	\$0	\$19,855,225.62	\$346,366.19	\$10,628,306.06	\$14,113.70	\$10,614,192.36
Bedford	\$0	\$5,716,995.61	\$121,170.41	\$4,416,042.87	\$0.00	\$4,416,042.87
Berks	\$25,205,905.50	\$30,257,479.93	\$843,134.64	\$16,573,156.55	\$0.00	\$16,573,156.55
Blair	\$0	\$14,544,267.02	\$716,611.45	\$7,715,088.96	\$134,295.65	\$7,580,793.31
Bradford	\$0	\$7,453,517.93	\$417,910.53	\$3,947,259.56	\$0.00	\$3,947,259.56
Bucks	\$33,533,184.50	\$41,839,651.55	\$3,483,592.65	\$23,975,363.09	\$0.00	\$23,975,363.09
Butler	\$0	\$18,583,382.09	\$608,625.05	\$11,885,541.20	\$0.00	\$11,885,541.20
Cambria	\$0	\$16,283,014.34	\$116,253.44	\$13,723,754.66	\$0.00	\$13,723,754.66
Cameron	\$0	\$556,182.90	\$0.00	\$216,011.47	\$0.00	\$216,011.47
Carbon	\$0	\$6,394,071.64	\$0.00	\$3,440,946.64	\$0.00	\$3,440,946.64
Centre	\$0	\$20,309,368.34	\$898,084.66	\$10,922,027.30	\$0.00	\$10,922,027.30
Chester	\$28,020,680.70	\$34,653,889.34	\$515,595.47	\$30,447,419.70	\$0.00	\$30,447,419.70
Clarion	\$0	\$4,588,829.72	\$618,782.62	\$1,572,096.19	\$12,621.36	\$1,559,474.83
Clearfield	\$0	\$9,584,143.50	\$456,219.47	\$3,266,817.10	\$59,730.63	\$3,207,086.47
Clinton	\$0	\$4,135,751.39	\$0.00	\$1,882,863.27	\$0.00	\$1,882,863.27
Columbia	\$0	\$7,755,573.49	\$194,126.29	\$3,720,681.46	\$0.00	\$3,720,681.46
Crawford	\$0	\$10,738,031.22	\$1,021,866.29	\$3,946,672.41	\$578,892.05	\$3,367,780.36
Cumberland	\$13,523,330.70	\$9,200,514.47	\$0.00	\$8,352,450.38	\$0.00	\$8,352,450.38
Dauphin	\$14,853,887.20	\$18,370,180.67	\$233,841.82	\$9,845,739.25	\$60,670.19	\$9,785,069.06
Delaware	\$30,249,465.60	\$42,014,249.53	\$2,040,937.51	\$12,580,424.43	\$1,870,158.00	\$10,710,266.43
Elk	\$0	\$3,476,001.61	\$143,428.09	\$1,945,439.80	\$0.00	\$1,945,439.80
Erie	\$14,396,420.00	\$20,105,806.39	\$778,662.44	\$3,229,138.86	\$0.00	\$3,229,138.86
Fayette	\$0	\$12,935,175.26	\$106,101.89	\$8,781,912.44	\$229,750.54	\$8,552,161.90
Forest	\$0	\$466,179.24	\$1,273.28	\$407,419.96	\$0.00	\$407,419.96
Franklin	\$0	\$19,389,108.88	\$961,322.29	\$7,916,905.14	\$0.00	\$7,916,905.14

TABLE 6: COMBINED ERAP1 and ERAP2 ALLOCATIONS AND EXPENDED FUNDS
AS REPORTED BY COUNTIES — APRIL 30, 2022

County	TOTAL ERAP Direct Federal Allocation	DHS Allocation ERAP1 & ERAP2	DHS ERAP1 & 2 funds Paid April 1 - 30	DHS funds Remaining YTD	DHS funds Obligated April 1 - 30	DHS Allocation after Obligations
Fulton	\$0	\$1,734,629.69	\$60,609.77	\$994,337.26	\$0.00	\$994,337.26
Greene	\$0	\$3,738,938.54	\$36,608.61	\$2,822,424.70	\$0.00	\$2,822,424.70
Huntingdon	\$0	\$5,389,409.66	\$149,134.54	\$3,625,565.16	\$11,962.37	\$3,613,602.79
Indiana	\$0	\$6,543,640.94	\$165,112.02	\$5,136,532.86	\$43,865.49	\$5,092,667.37
Jefferson	\$0	\$4,762,572.22	\$190,081.52	\$2,803,225.31	\$0.00	\$2,803,225.31
Juniata	\$0	\$2,124,069.40	\$57,711.85	\$1,764,016.91	\$5,135.33	\$1,758,881.58
Lackawanna	\$11,191,107.30	\$14,453,966.91	\$318,851.20	\$8,490,840.21	\$244,739.00	\$8,246,101.21
Lancaster	\$29,127,387.30	\$36,022,581.68	\$3,195,501.19	\$22,946,777.18	\$0.00	\$22,946,777.18
Lawrence	\$0	\$10,208,647.86	\$234,409.07	\$6,325,219.59	\$78,093.98	\$6,247,125.61
Lebanon	\$0	\$13,757,433.01	\$75,700.57	\$8,790,017.81	\$0.00	\$8,790,017.81
Lehigh	\$22,792,650.60	\$24,924,836.64	\$1,944,280.18	\$10,340,007.97	\$0.00	\$10,340,007.97
Luzerne	\$16,941,765.20	\$22,757,337.35	\$0.00	\$14,338,701.20	\$0.00	\$14,338,701.20
Lycoming	\$0	\$13,819,722.01	\$415,609.74	\$4,878,735.06	\$0.00	\$4,878,735.06
McKean	\$0	\$4,849,919.54	\$35,859.06	\$3,420,954.62	\$0.00	\$3,420,954.62
Mercer	\$0	\$13,063,325.42	\$657,571.96	\$7,026,049.30	\$124,102.93	\$6,901,946.37
Mifflin	\$0	\$5,077,239.00	\$185,887.59	\$3,267,909.65	\$10,158.13	\$3,257,751.52
Monroe	\$0	\$21,632,099.99	\$1,093,131.01	\$5,084,787.48	\$0.00	\$5,084,787.48
Montgomery	\$49,137,764.50	\$53,185,602.65	\$2,702,634.45	\$30,392,480.45	\$0.00	\$30,392,480.45
Montour	\$0	\$2,216,564.15	\$68,708.34	\$1,562,358.01	\$0.00	\$1,562,358.01
Northampton	\$16,294,233.80	\$19,280,863.00	\$0.00	\$9,776,727.60	\$0.00	\$9,776,727.60
Northumberland	\$0	\$11,361,664.86	\$407,278.42	\$5,359,582.27	\$0.00	\$5,359,582.27
Perry	\$0	\$4,055,007.13	\$91,631.93	\$3,148,486.07	\$0.00	\$3,148,486.07
Philadelphia	\$105,591,739.00	\$117,821,367.10	\$692,058.84	\$42,100,683.44	\$27,773.08	\$42,072,910.36
Pike	\$0	\$6,764,412.73	\$264,536.29	\$3,937,436.39	\$267,057.15	\$3,670,379.24
Potter	\$0	\$1,452,116.41	\$19,572.50	\$1,027,334.71	\$1,410.00	\$1,025,924.71
Schuylkill	\$0	\$16,875,809.87	\$650,900.99	\$8,408,988.15	\$0.00	\$8,408,988.15
Snyder	\$0	\$4,819,715.72	\$205,615.14	\$3,164,428.29	\$32,835.05	\$3,131,593.24
Somerset	\$0	\$7,870,811.54	\$30,060.47	\$5,037,585.09	\$0.00	\$5,037,585.09

TABLE 6: COMBINED ERAP1 and ERAP2 ALLOCATIONS AND EXPENDED FUNDS
AS REPORTED BY COUNTIES — APRIL 30, 2022

County	TOTAL ERAP Direct Federal Allocation	DHS Allocation ERAP1 & ERAP2	DHS ERAP1 & 2 funds Paid April 1 - 30	DHS funds Remaining YTD	DHS funds Obligated April 1 - 30	DHS Allocation after Obligations
Sullivan	\$0	\$635,441.93	\$0.00	\$533,965.63	\$0.00	\$533,965.63
Susquehanna	\$0	\$4,316,959.20	\$62,619.00	\$3,177,635.36	\$0.00	\$3,177,635.36
Tioga	\$0	\$3,845,946.16	\$62,669.21	\$2,878,134.63	\$39,918.18	\$2,838,216.45
Union	\$0	\$5,363,026.11	\$223,344.51	\$3,579,973.35	\$23,572.93	\$3,556,400.42
Venango	\$0	\$5,358,560.27	\$130,701.18	\$2,943,202.34	\$13,722.19	\$2,929,480.15
Warren	\$0	\$4,176,643.74	\$107,103.13	\$2,365,036.28	\$0.00	\$2,365,036.28
Washington	\$11,041,180.10	\$13,654,908.64	\$525,311.71	\$10,054,241.58	\$309,529.84	\$9,744,711.74
Wayne	\$0	\$4,767,076.16	\$79,841.41	\$3,541,652.78	\$10,862.80	\$3,530,789.98
Westmoreland	\$18,622,080.50	\$23,122,965.32	\$938,124.42	\$13,550,685.78	\$0.00	\$13,550,685.78
Wyoming	\$0	\$2,147,029.79	\$54,651.43	\$1,710,684.23	\$0.00	\$1,710,684.23
York	\$23,967,951.40	\$32,195,390.80	\$0.00	\$17,965,862.13	\$0.00	\$17,965,862.13
State Total	\$540,398,056.10	\$1,037,959,190.73	\$38,149,560.00	\$528,061,449.46	\$7,739,970.57	\$520,321,478.89

**Shaded counties did not report any DHS ERAP1 and ERAP2 funds paid or obligated in the month of April.*