

PennDOT Project Information

Virtual Public Meeting – May 2025

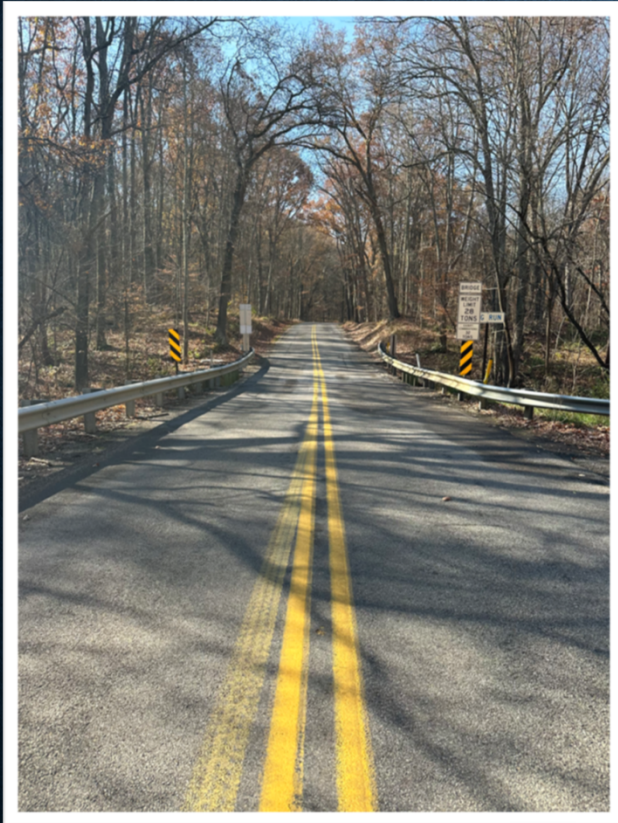
SR 0528 Section 259

Arbor Drive over Big Run



SR 0528 Section 259 Butler County, PA

Purpose of Presentation

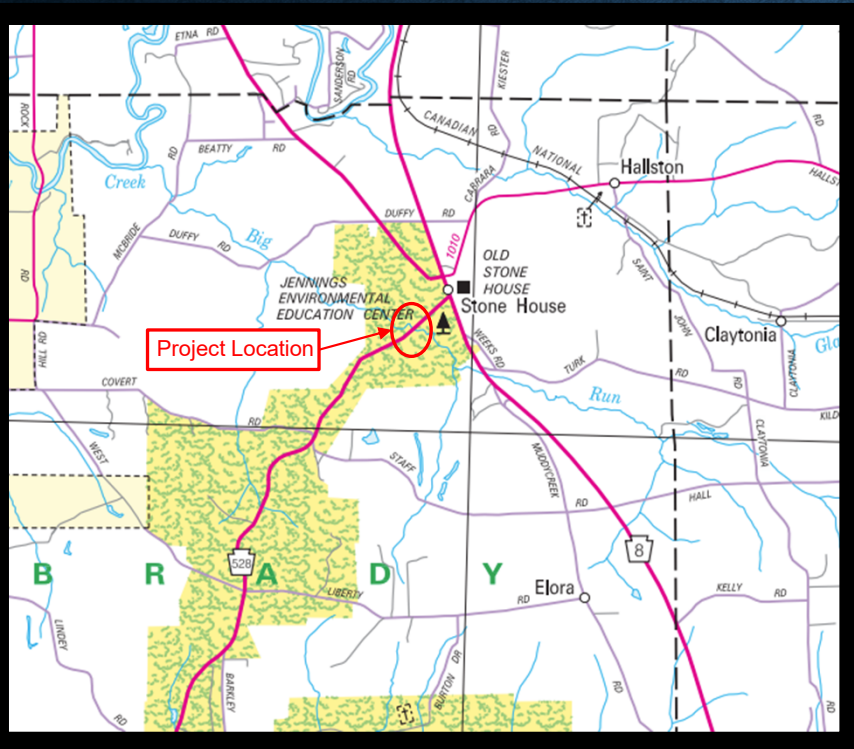


SR 0528 (Arbor Drive) over Big Run

- The purpose of this presentation is to introduce the project to the public, gather feedback, and present the proposed design.
- The intent of the project is to provide a sustainable crossing on SR 0528 (Arbor Drive) over Big Run.

SR 0528 Section 259 Butler County, PA

Project Location & Summary



- Culvert Replacement Project located in Brady Township
- SR 0528 (Arbor Drive) over Big Run near West Liberty, PA serves as a connector between Prospect to the south and SR 8 to the north.
- Existing Structure – 16 ft long single-span rolled steel beam bridge
- Proposed Structure – Precast Reinforced Concrete Box Culvert
- Estimated Construction Cost – \$1M - \$2.5M, State funded

SR 0528 Section 259 Butler County, PA

Project Improvements

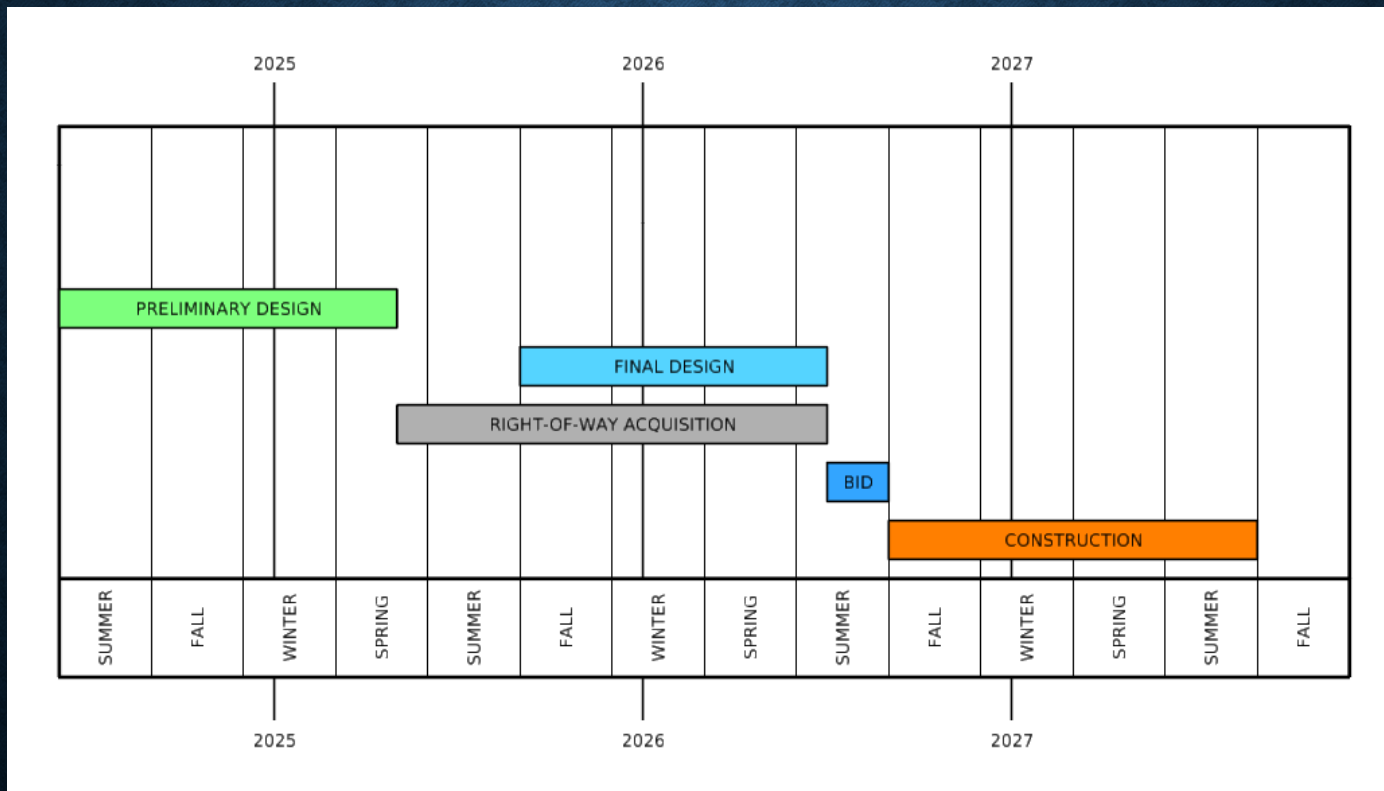


Downstream End of Existing Structure

- Remove the existing structurally deficient single-span rolled steel beam bridge
- Construct a proposed 16'-0" x 9'-0" precast reinforced concrete box culvert.
- Perform full-depth pavement reconstruction along approximately 237 feet of SR 0528.
- Complete pavement marking, signing, and guide rail improvements.

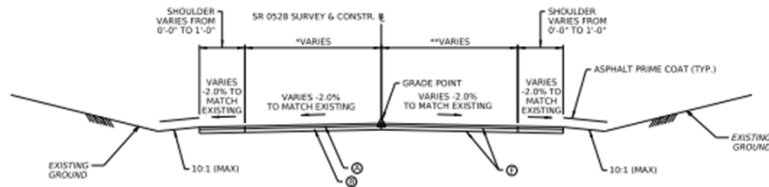
SR 0528 Section 259 Butler County, PA

Anticipated Project Schedule



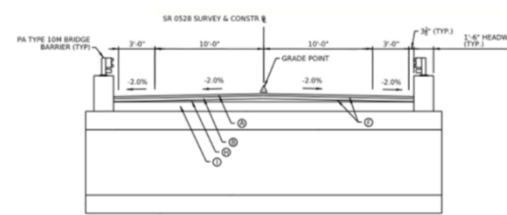
SR 0528 Section 259 Butler County, PA

Proposed Typical Roadway Section



SR 0528 TYPICAL SECTION MILL & OVERLAY

NOT TO SCALE
STA 103+10.00 TO STA 103+35.00
& STA 105+90.00 TO STA 106+15.00

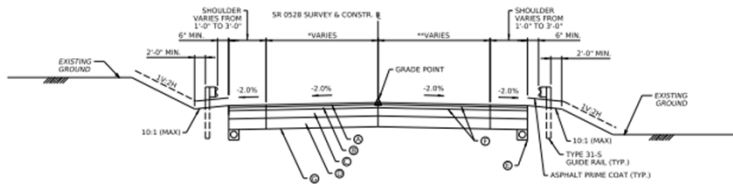


SR 0528 STRUCTURE TYPICAL SECTION (CULVERT)

NOT TO SCALE
STA 104+24.00 TO STA 104+42.83

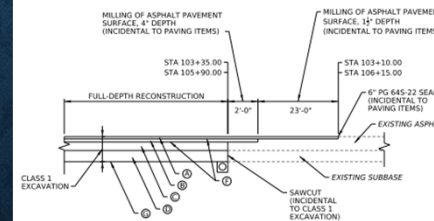
LEGEND

- ① SUPERPAVE ASPHALT MIXTURE DESIGN WEARING COURSE, PG 645-22
≤0.3 MILLION ESALS, 9.5 MM MK
2 1/2" DEPTH, SRL-M
- ② SUPERPAVE ASPHALT MIXTURE DESIGN BINDER COURSE, PG 645-22
≤0.3 MILLION ESALS, 19.0 MM MK
2 1/2" DEPTH, SRL-M
- ③ SUPERPAVE ASPHALT MIXTURE DESIGN BASE COURSE, PG 645-22
≤0.3 MILLION ESALS, 25.0 MM MK
4" DEPTH
- ④ SUBBASE 6" DEPTH (NO. 2A)
- ⑤ 6" PAVEMENT BASE DRAIN
- ⑥ ASPHALT TACK COAT (INT/INT)
- ⑦ GEOTEXTILE, CLASS 4, TYPE A
- ⑧ ASPHALT BUILD-UP
- ⑨ 5" CONCRETE DISTRIBUTION SLAB
- ASPHALT PRIME COAT
- SEEDING AND SOE, SUPPLEMENTS, INCLUDING MULCH



SR 0528 TYPICAL SECTION FULL-DEPTH RECONSTRUCTION

NOT TO SCALE
STA 103+35.00 TO STA 104+24.00
& STA 104+42.83 TO STA 105+90.00

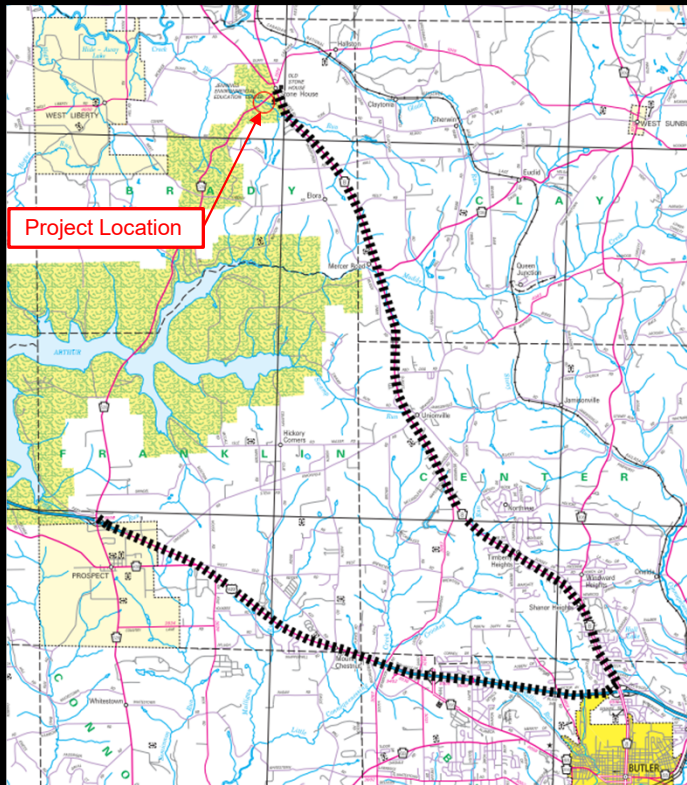


TYPICAL TIE-IN DETAIL TO EXISTING PAVEMENT

NOT TO SCALE

SR 0528 Section 259 Butler County, PA

Proposed Detour

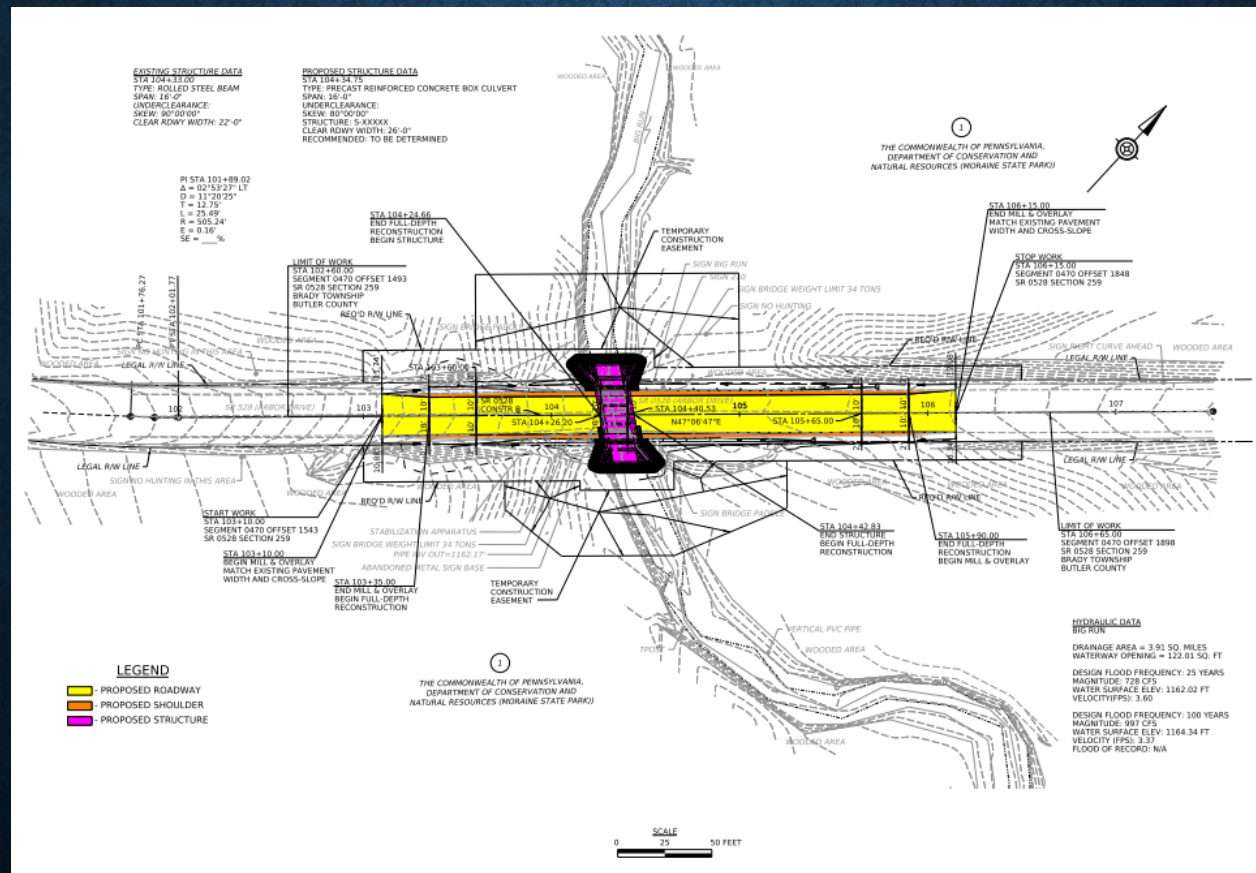


SR 0528 Detour Route

- A detour route is anticipated to be the preferred method of traffic control.
- The closure will last for approximately 2 months, with traffic being detoured along a signed route.
- Detour Length – 19.9 Miles, 26 Minutes
- The detour will be publicized and coordinated with the Slippery Rock Area School District, Local Emergency Services, and the USPS.

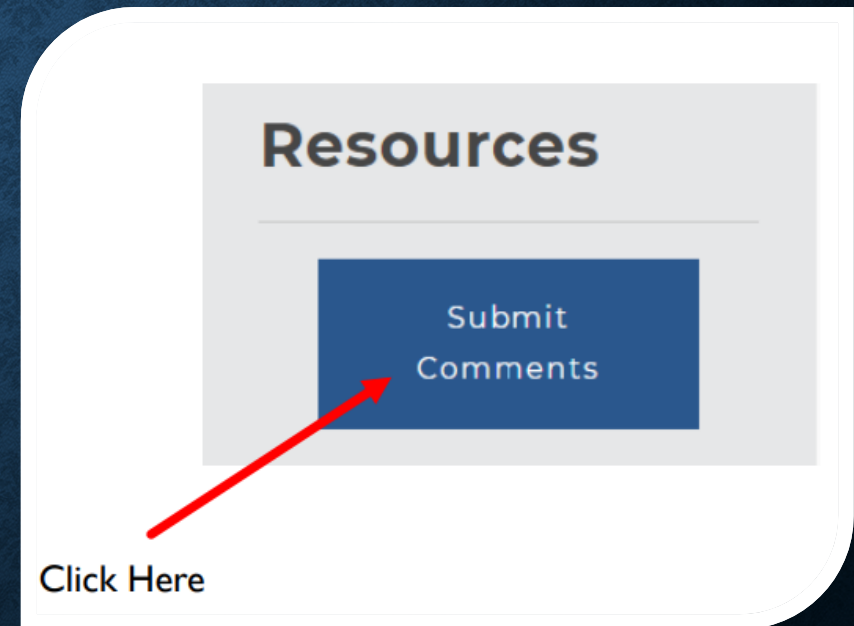
SR 0528 Section 259 Butler County, PA

Plan View



Please complete the Project Survey

- The project survey can be found on the project website.
- Click the tile under resources labeled “Submit Comments” on the right-hand side of the screen.



SR 0528 Section 259
Butler County, PA

Questions?

Contact the PennDOT Project Manager by phone or email if you have any questions or concerns:

Josh Allen, PE

- Phone: 724.427.3556
- Email: joshallen@pa.gov