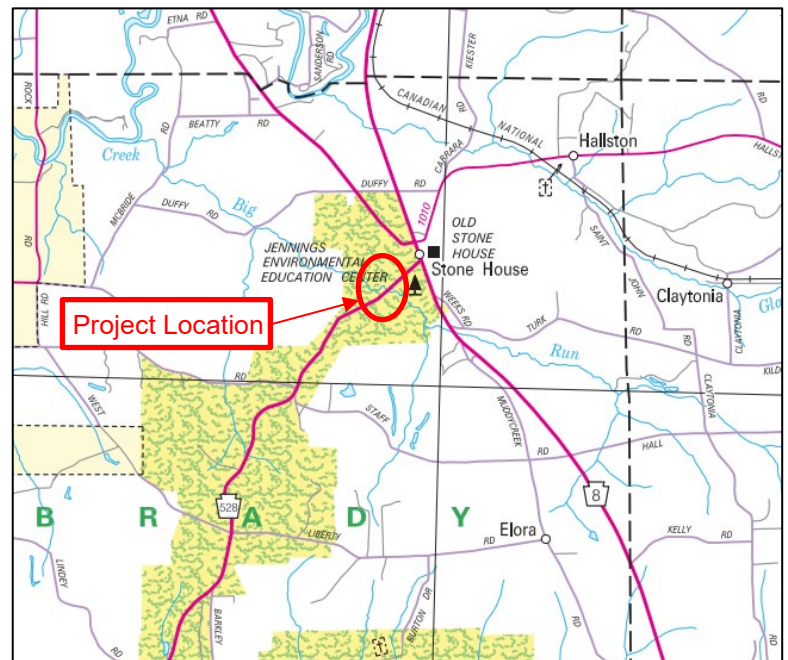

PROJECT DESCRIPTION

The proposed project includes replacement of the existing structure carrying SR 0528 (Arbor Drive) over Big Run in Butler County.

PROJECT LOCATION

The SR 0528 Section 259 project is located in Brady Township. SR 0528 (Arbor Drive) over Big Run near West Liberty, PA serves as a connector between Prospect to the south and SR 8 to the north.



PROPOSED PLAN

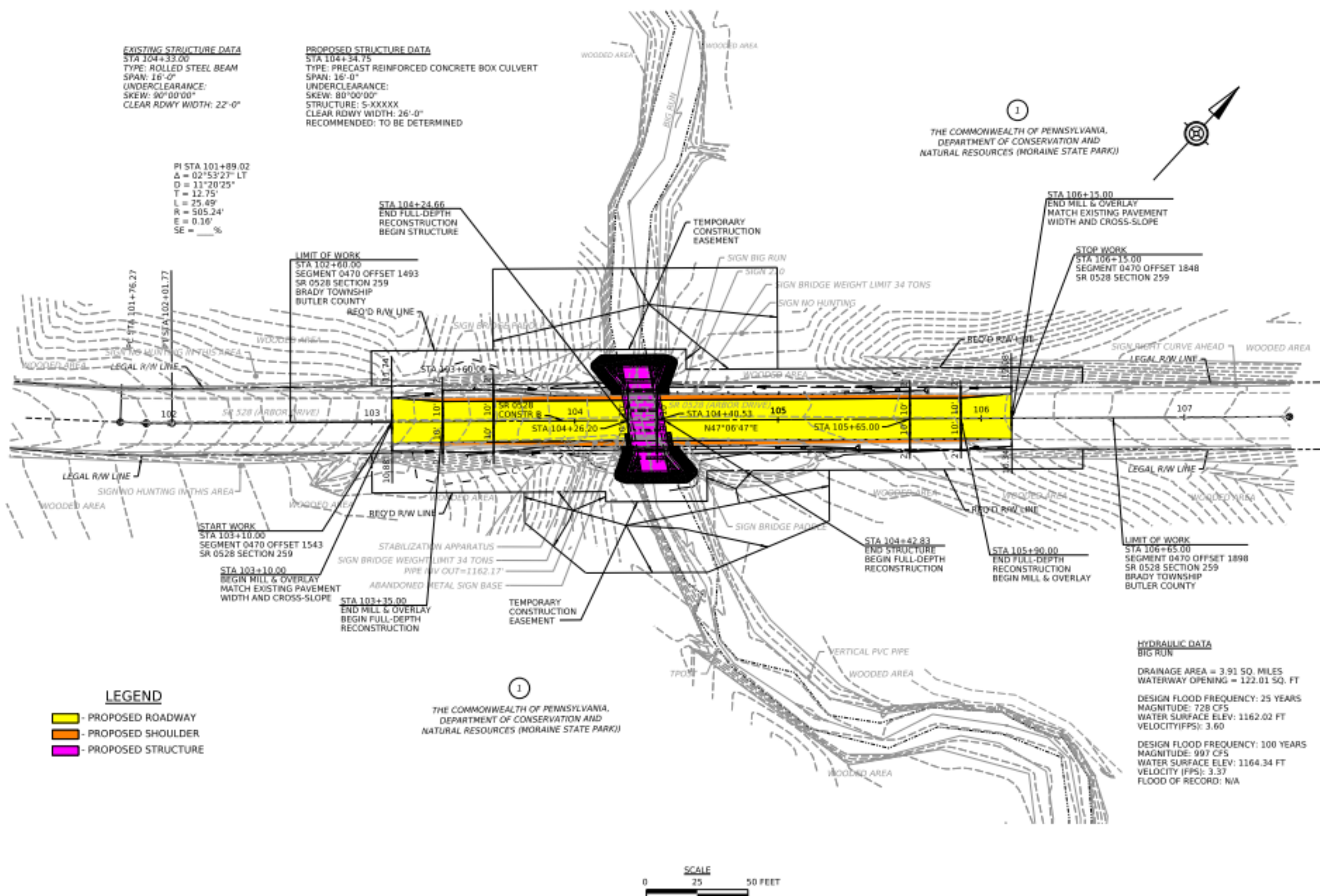
- Remove the existing structurally deficient single-span rolled steel beam bridge.
- Construct a proposed 16'-0" x 9'-0" precast reinforced concrete box culvert.
- Perform full-depth pavement reconstruction along approximately 237 feet of SR 0528.
- Complete pavement marking, signing, and guide rail improvements.

ANTICIPATED PROJECTED SCHEDULE

Preliminary Engineering/Environmental Clearance Complete: Spring 2025

Final Design: Fall 2025-Summer 2026

Construction: Fall 2026-Fall 2027



PROPOSED DETOUR

- A detour route is anticipated to be the preferred method of traffic control.
- The closure will last for approximately 2 months, with traffic being detoured along a signed route.
- Detour Length – 19.9 Miles, 26 Minutes
- The detour will be publicized and coordinated with the Slippery Rock Area School District, Local Emergency Services, and the USPS.

ESTIMATED CONSTRUCTION FUNDING

\$1M - \$2.5M, State Funded

PUBLIC COMMENT PERIOD

Please complete the Project Survey from May 1st-22nd, 2025.

- The project survey can be found on the project website.
<https://www.penndot.pa.gov/RegionalOffices/district-10/PublicMeetings/ButlerCounty/Pages/default.aspx>
- Click the tile under resources labeled "Submit Comments" on the right-hand side of the screen.

PROJECT CONTACT

PennDOT Project Manager

Josh Allen, PE

2550 Oakland Avenue

Indiana, PA 15701

Email: joshallen@pa.gov

Phone: (724) 427-3556