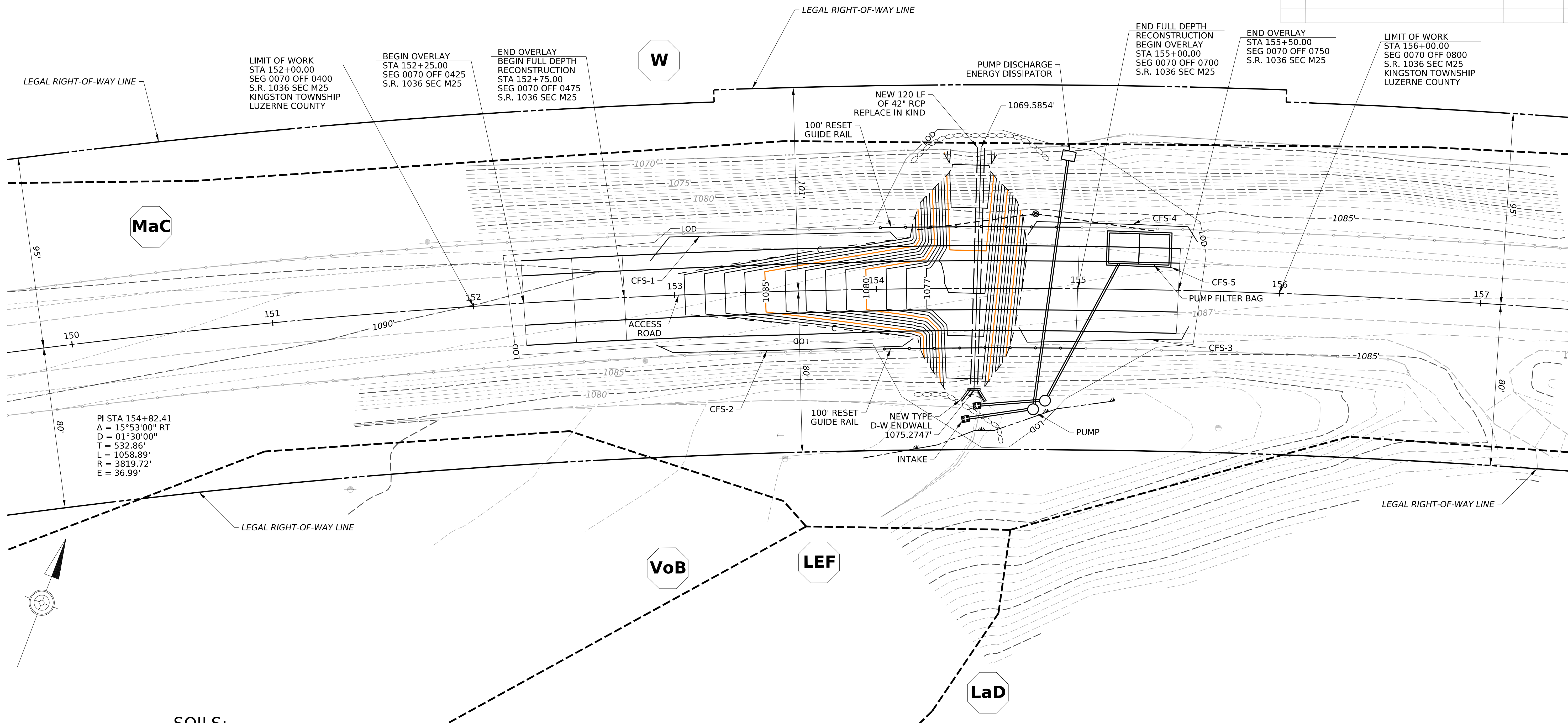


EROSION AND SEDIMENT POLLUTION CONTROL PLAN

DISTRICT	COUNTY	ROUTE	SECTION	SHEET
4-0	LUZERNE	1036	M25	6 OF 7
KINGSTON TOWNSHIP				
REV NO	REVISIONS	DATE	BY	APPD

OPERATOR: bvacendak
FILE NAME: pw://PDEDPRAPPW01.pennndot.icl:Connect_Projects/Documents/OpenRoads_Projects/D04/40 - Luzerne/40 1036 M25 (122280) Pipe Replacement/DESIGN/Roadway/CADD Files/40-1036 - PRINTING ES
2-DEC-2024 14:54



PI STA 154+82.41
 $\Delta = 15^\circ 53' 00''$ RT
 $D = 01^\circ 30' 00''$
 $T = 532.86'$
 $L = 1058.89'$
 $R = 3819.72'$
 $E = 36.99'$

TOTAL LIMIT OF DISTURBANCE
29,000.00 SQUARE FEET

TOTAL TEMPORARY WETLAND DISTURBANCE
310.00 SQUARE FEET

SOILS:

- LaD** LACKAWANNA CHANNERY SILT LOAM, 15 TO 25 PERCENT SLOPES
- LEF** LACKAWANNA AND BATH SOILS, STEEP, EXTREMELY STONY
- MaC** MARDIN CHANNERY SILT LOAM, 8 TO 15 PERCENT SLOPES
- VoB** VOLUSIA CHANNERY SILT LOAM, 0 TO 8 PERCENT SLOPES
- W** WATER

LEGEND

- ROCK CONSTRUCTION ENTRANCE
- TEMPORARY COFFERDAM
- SOIL BOUNDARY
- LIMIT OF DISTURBANCE
- EXISTING CONTOURS (1' INTERVAL)
- PROPOSED CONTOURS (1' INTERVAL)

SCALE

