

SR 4037 OVER KISTLER CREEK BRIDGE PROJECT

Lynn Township, Lehigh County

BRIDGE FEATURES:

- BUILT IN 1910
(STEEL PIPE CULVERT)
- BRIDGE IS IN SERIOUS CONDITION AND IS CLOSED

PURPOSE:

- REPLACE THE EXISTING BRIDGE IN A WAY THAT WILL MAINTAIN THE EXISTING CROSSING, MEETS CURRENT DESIGN STANDARDS, AND MINIMIZED THE IMPACTS DURING CONSTRUCTION.

ANTICIPATED PROJECT SCHEDULE:

- (SUBJECT TO CHANGE)
- PRELIMINARY AND FINAL ENGINEERING
(SUMMER 2022 TO FALL 2025)
- AWARD CONTRACT
(FALL 2025)
- CONSTRUCTION
(SPRING 2026 TO SUMMER 2026)
- ANTICIPATED CONSTRUCTION DURATION
(4 MONTHS)



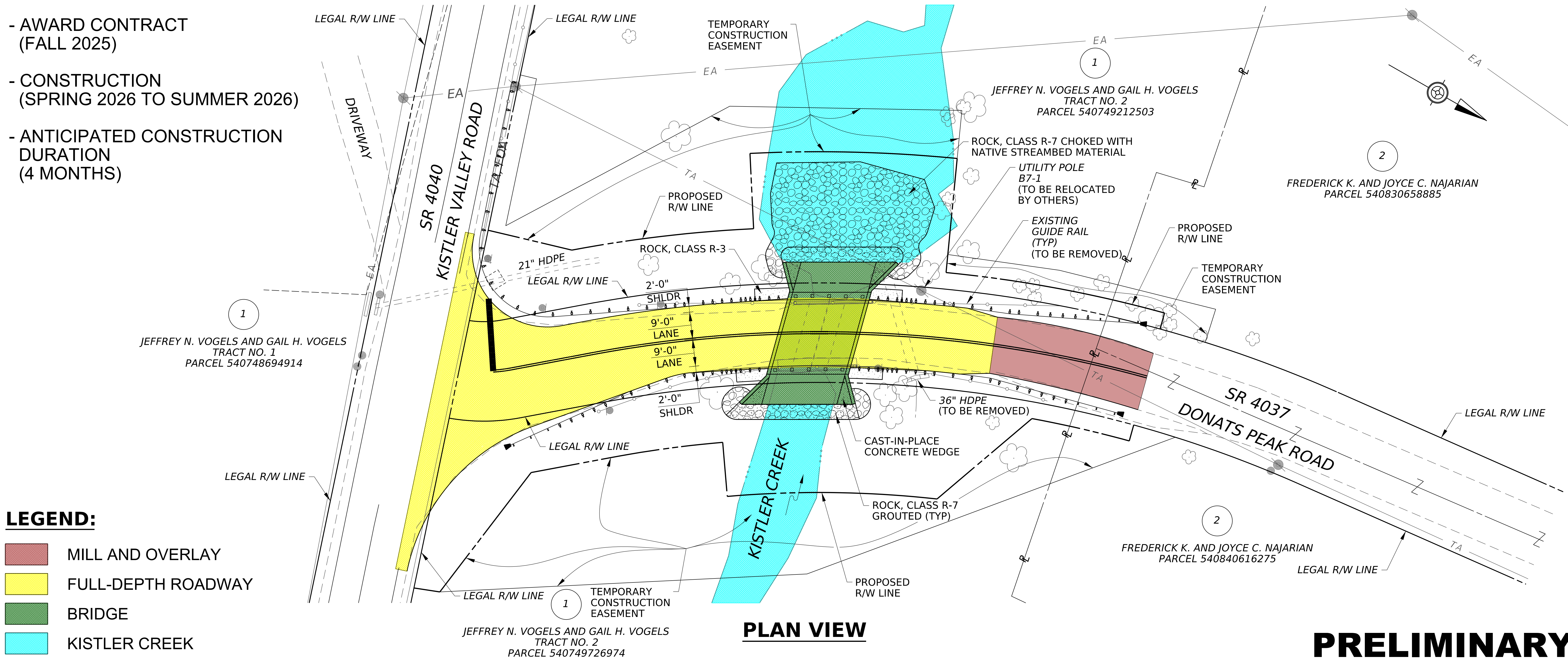
ROADWAY VIEW FROM SOUTH APPROACH



ROADWAY INTERSECTION



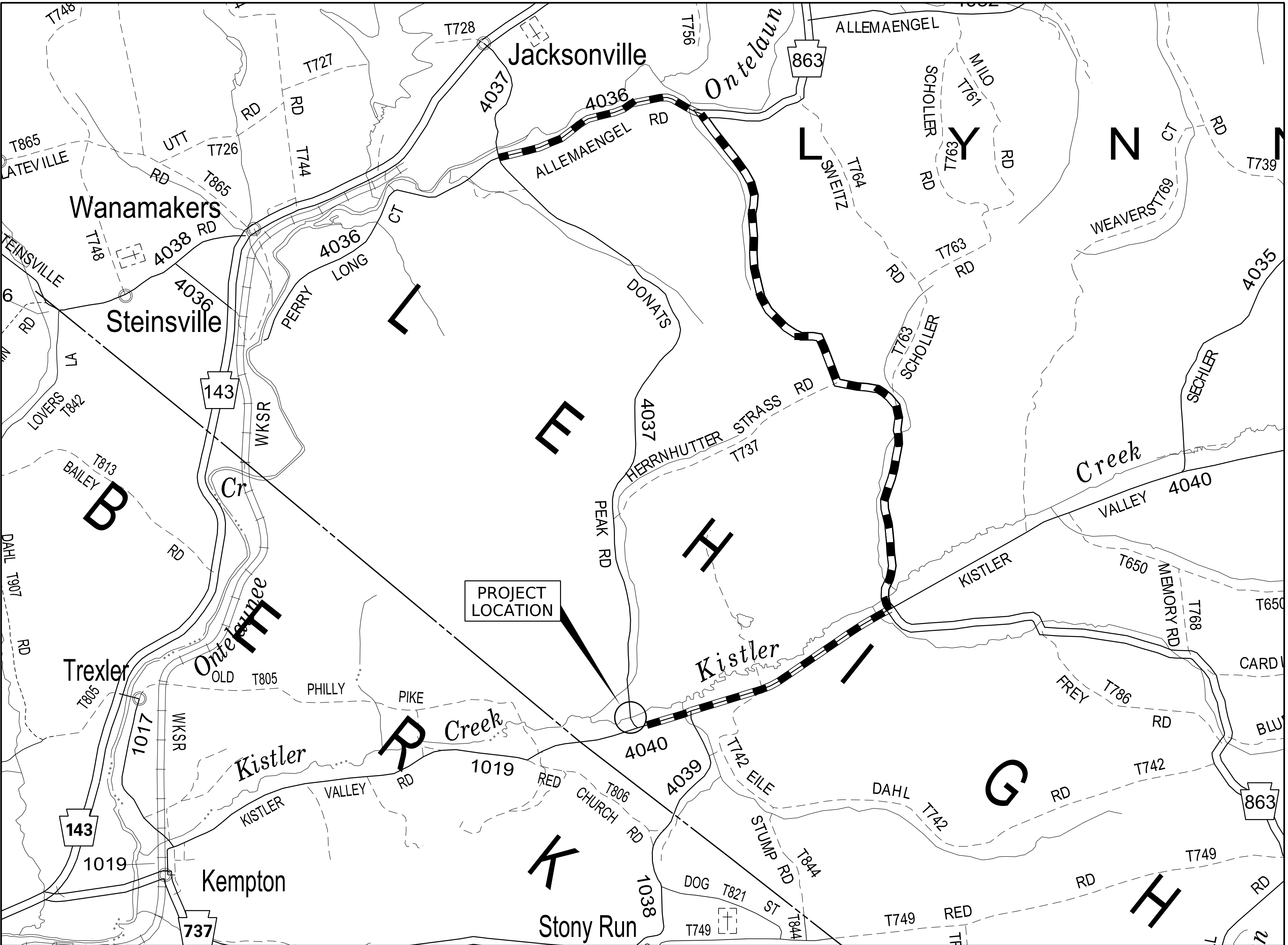
UPSTREAM ELEVATION



PRELIMINARY

SR 4037 OVER KISTLER CREEK BRIDGE PROJECT

Lynn Township, Lehigh County



LEGEND

- STATE HIGHWAY
- TOWNSHIP ROAD
- UNNUMBERED STATE ROAD
- STREAM
- MUNICIPAL BOUNDARY
- DETOUR

DETOUR LENGTH = 4.2 MILES

SR 4037 DETOUR MAP

0 1/4 1/2 MILE

PRELIMINARY



pennsylvania
DEPARTMENT OF TRANSPORTATION

PROJECT OVERVIEW
Winter 2025

PREPARED BY:
PCS PICKERING, CORTS &
SUMMERSON, INC.