

SR 2038 OVER UNNAMED TRIBUTARY TO DELAWARE RIVER BRIDGE PROJECT

Forks Township, Northampton County

BRIDGE FEATURES:

- BUILT IN 1920
(NON-COMPOSITE CONCRETE ENCASED ROLLED STEEL I-BEAMS)
- BRIDGE IS RESTRICTED TO ONE LANE
- BRIDGE IS IN IMMINENT FAILURE CONDITION

PURPOSE:

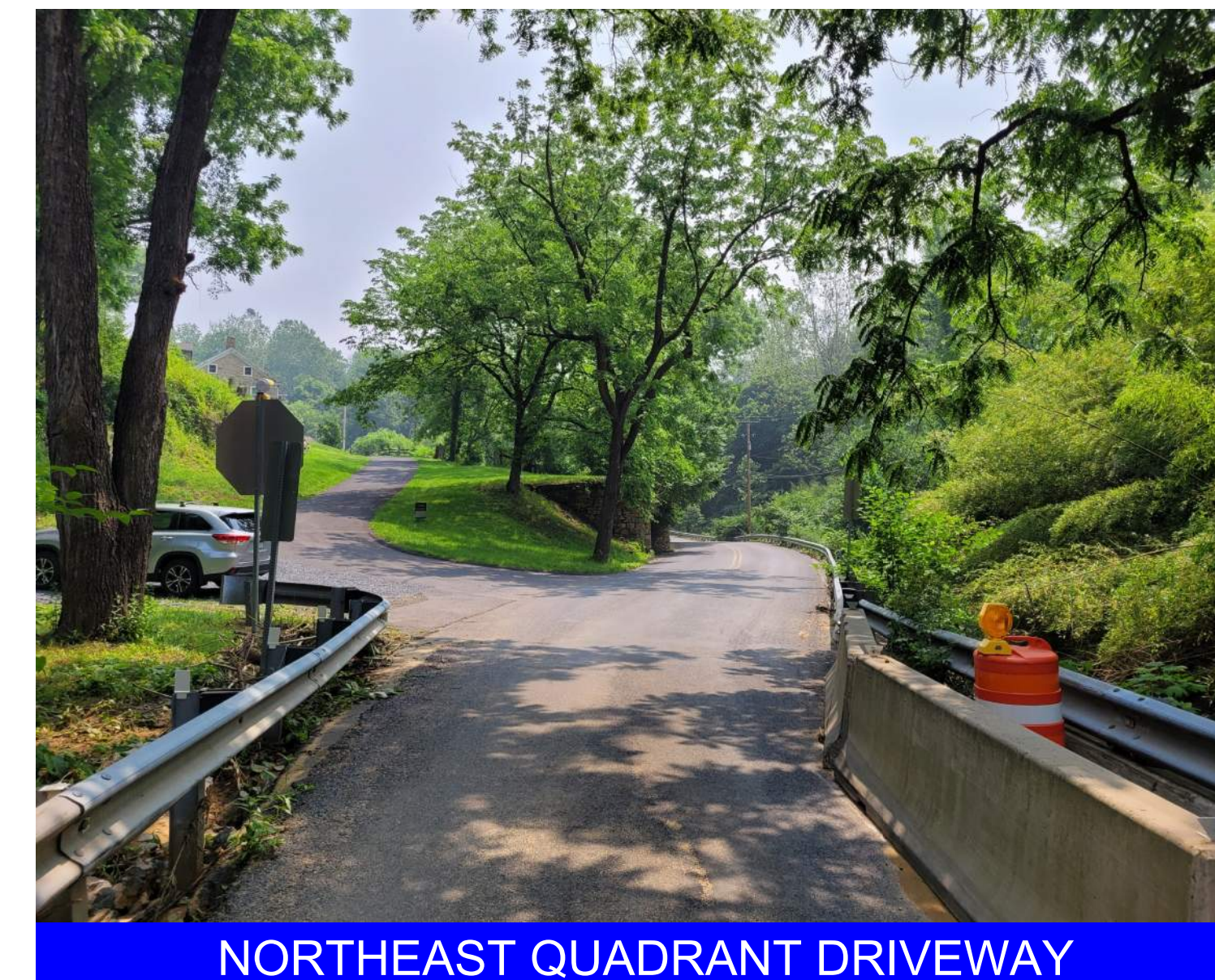
- REPLACE THE EXISTING BRIDGE IN A WAY THAT WILL MAINTAIN THE EXISTING CROSSING, MEETS CURRENT DESIGN STANDARDS, AND MINIMIZED THE IMPACTS DURING CONSTRUCTION.

ANTICIPATED PROJECT SCHEDULE:

- (SUBJECT TO CHANGE)
- PRELIMINARY AND FINAL ENGINEERING
(SUMMER 2022 TO FALL 2026)
- AWARD CONTRACT
(FALL 2026)
- CONSTRUCTION
(SPRING 2027 TO FALL/WINTER 2028)
- ANTICIPATED CONSTRUCTION DURATION
(5 MONTHS)



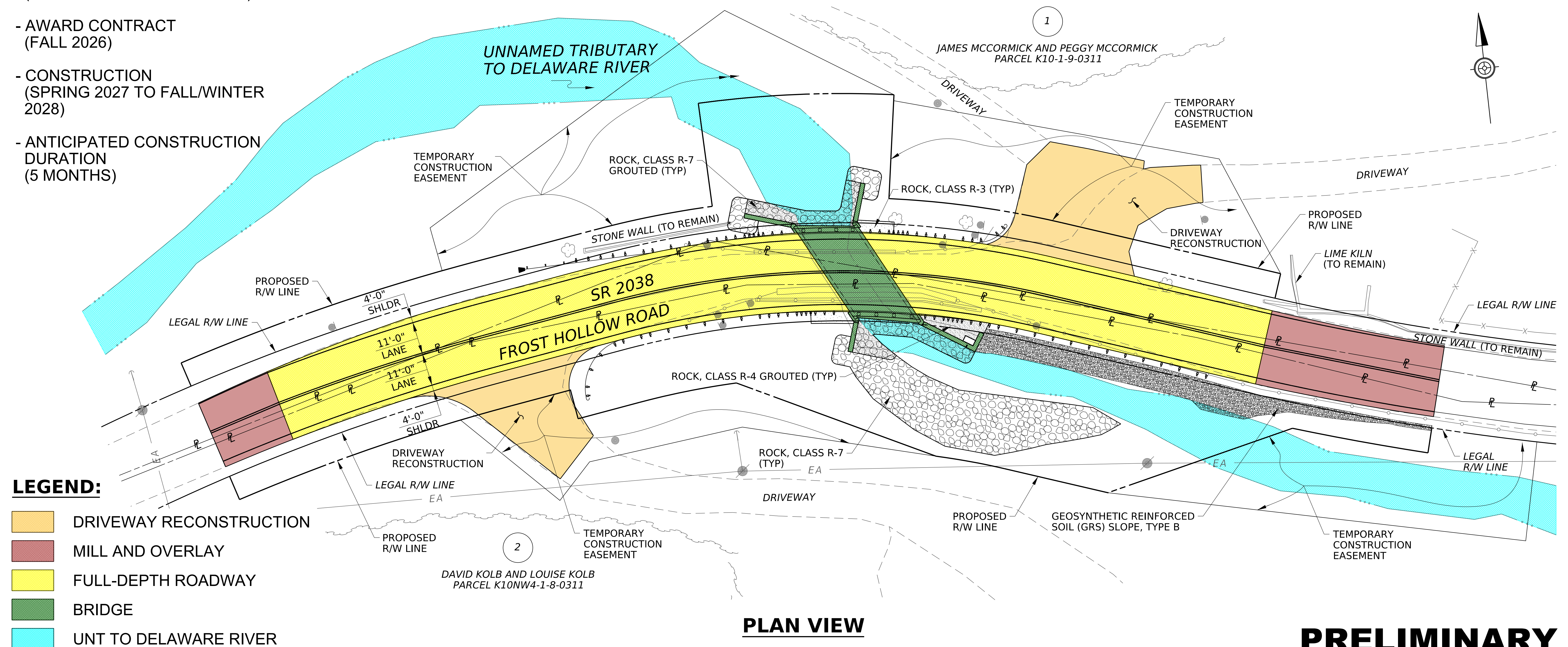
ROADWAY VIEW FROM WEST APPROACH



NORTHEAST QUADRANT DRIVEWAY



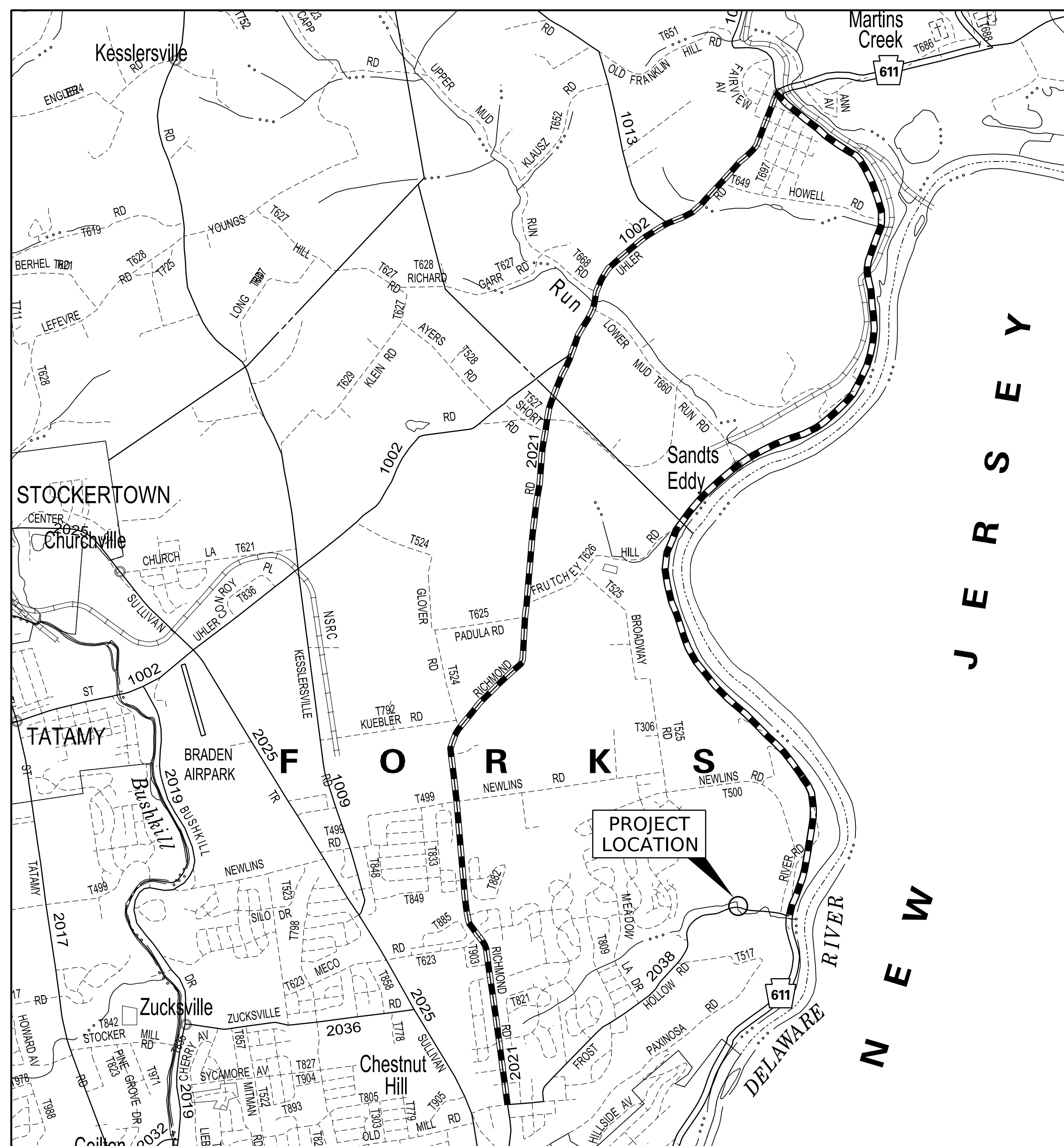
SOUTHEAST QUADRANT DRIVEWAY



PRELIMINARY

SR 2038 OVER UNNAMED TRIBUTARY TO DELAWARE RIVER BRIDGE PROJECT

Forks Township, Northampton County



LEGEND

- STATE HIGHWAY
- TOWNSHIP ROAD
- UNNUMBERED STATE ROAD
- STREAM
- MUNICIPAL BOUNDARY
- DETOUR

DETOUR LENGTH = 10.5 MILES

SR 2038 DETOUR MAP

0 1/4 1/2 MILE



UPSTREAM ELEVATION



HISTORIC STONE WALL

PRELIMINARY



pennsylvania
DEPARTMENT OF TRANSPORTATION

**PROJECT OVERVIEW
WINTER 2025**

PREPARED BY:



PICKERING, CORTS &
SUMMERSON, INC.