

SR 143 OVER UNNAMED TRIBUTARY TO ONTELAUNEE CREEK BRIDGE PROJECT

Lynn Township, Lehigh County

BRIDGE FEATURES:

- BUILT IN 1926
(REINFORCED CONCRETE HOLLOW SLAB)
- BRIDGE IS IN POOR CONDITION

PURPOSE:

- REPLACE THE EXISTING BRIDGE IN A WAY THAT WILL MAINTAIN THE EXISTING CROSSING, MEETS CURRENT DESIGN STANDARDS, AND MINIMIZED THE IMPACTS DURING CONSTRUCTION.

ANTICIPATED PROJECT SCHEDULE:

- (SUBJECT TO CHANGE)
- PRELIMINARY AND FINAL ENGINEERING
(SUMMER 2022 TO FALL 2026)
- AWARD CONTRACT
(FALL 2026)
- CONSTRUCTION
(SPRING 2027 TO FALL/WINTER 2028)
- ANTICIPATED CONSTRUCTION DURATION
(3 MONTHS)



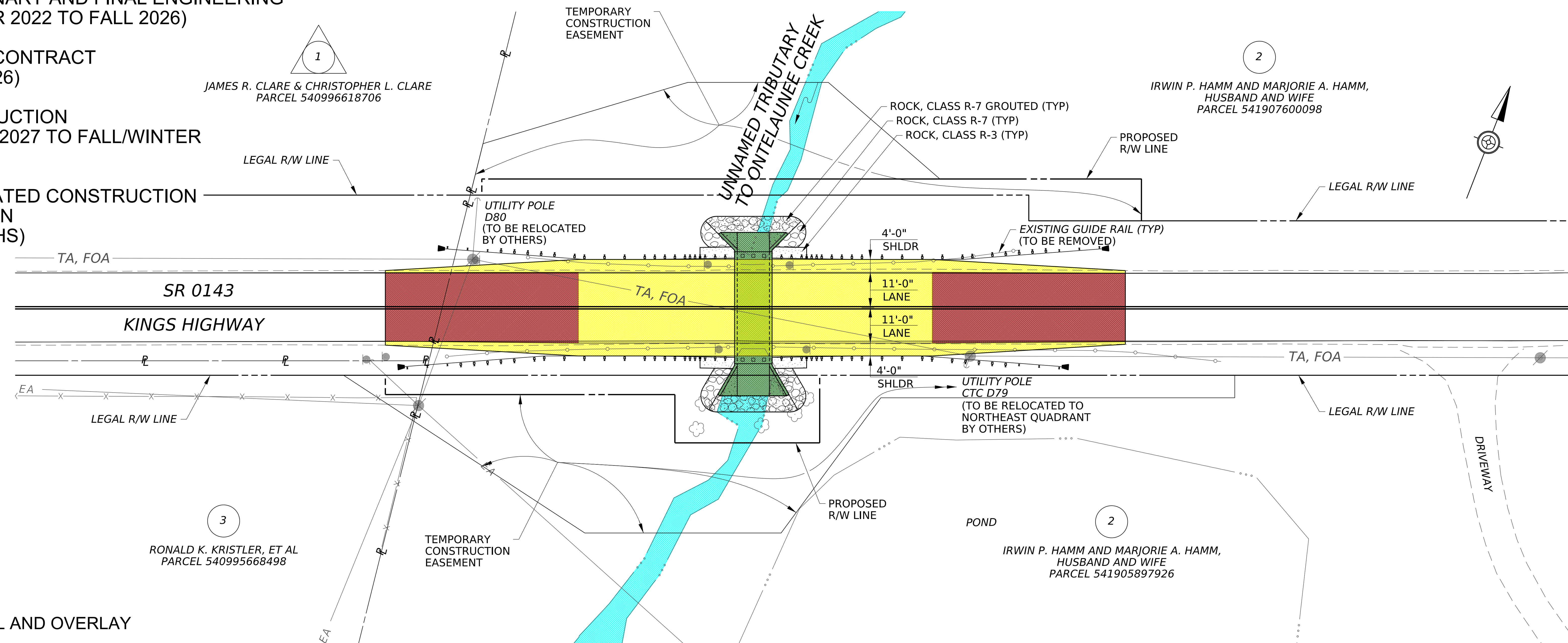
ROADWAY VIEW FROM EAST APPROACH



SOUTHEAST QUADRANT POND



DOWNSTREAM ELEVATION



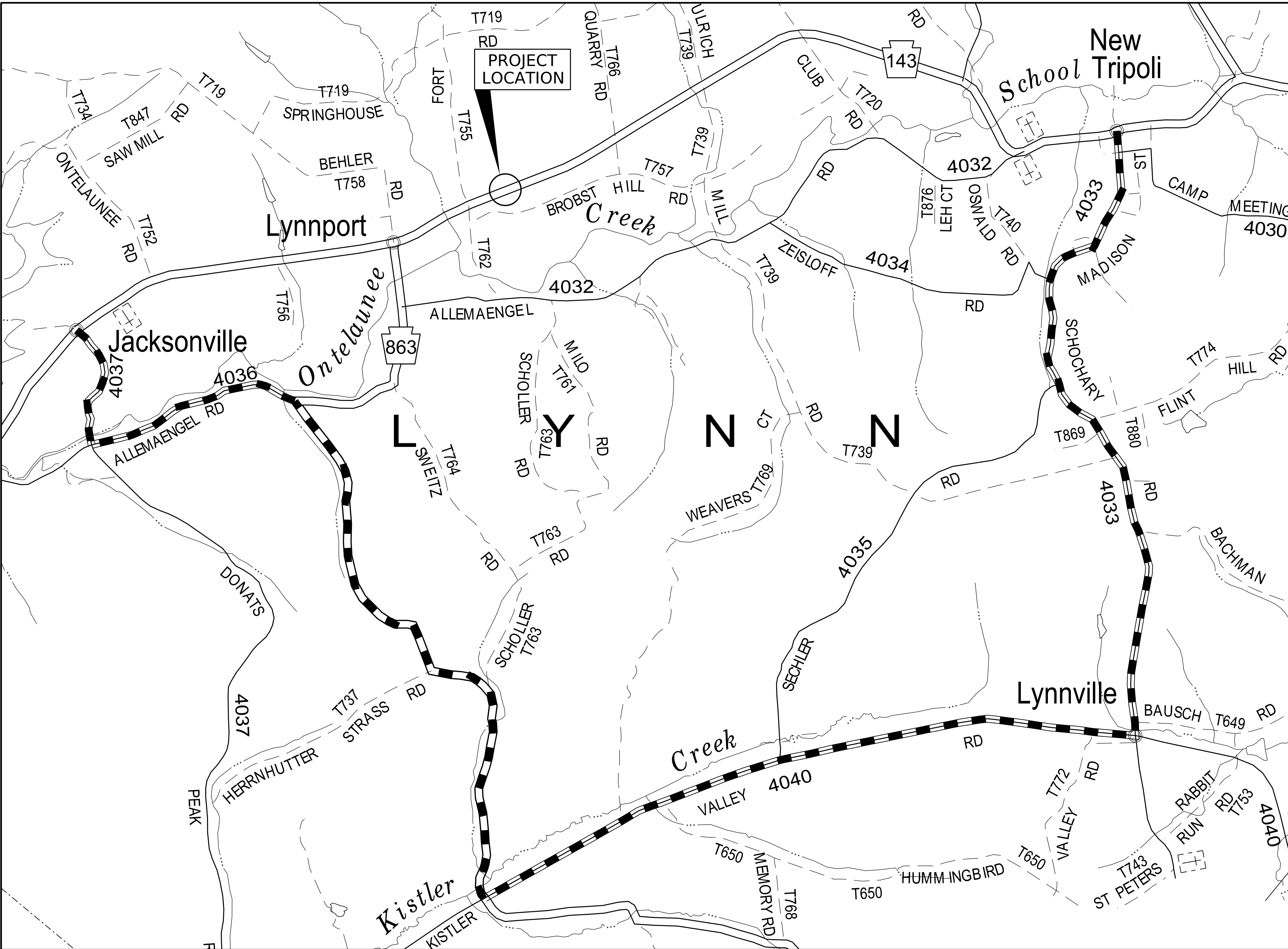
PLAN VIEW

PRELIMINARY





LEGEND

- MILL AND OVERLAY
- FULL-DEPTH ROADWAY
- BRIDGE
- UNT TO ONTELAUNEE CREEK

SR 143 OVER UNNAMED TRIBUTARY TO ONTELAUNEE CREEK BRIDGE PROJECT
Lynn Township, Lehigh County



LEGEND

	STATE HIGHWAY
	TOWNSHIP ROAD
	UNNUMBERED STATE ROAD
	STREAM
	MUNICIPAL BOUNDARY
	DETOUR

DETOUR LENGTH = 8.4 MILES

SR 0143 **DETOUR MAP**

0 1/4 1/2 MILE

PRELIMINARY



PROJECT OVERVIEW

Winter 2025

PREPARED BY:

PCS PICKERING, CORTS &
SUMMERSON, INC.