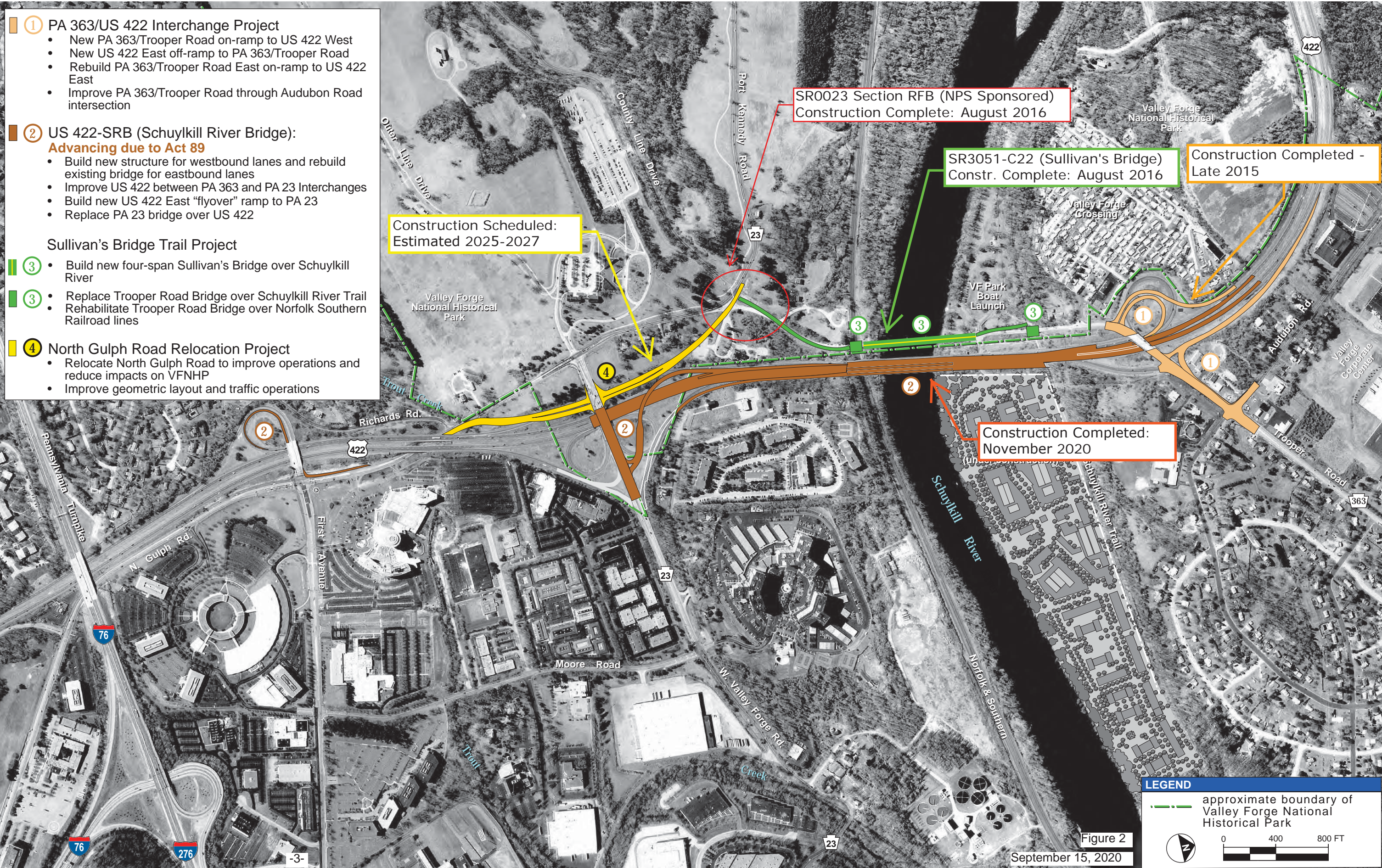


# Schuylkill River Crossing Complex Transportation Improvement Projects



- ① **PA 363/US 422 Interchange Project**
  - New PA 363/Trooper Road on-ramp to US 422 West
  - New US 422 East off-ramp to PA 363/Trooper Road
  - Rebuild PA 363/Trooper Road East on-ramp to US 422 East
  - Improve PA 363/Trooper Road through Audubon Road intersection
  
- ② **US 422-SRB (Schuylkill River Bridge):**  
**Advancing due to Act 89**
  - Build new structure for westbound lanes and rebuild existing bridge for eastbound lanes
  - Improve US 422 between PA 363 and PA 23 Interchanges
  - Build new US 422 East "flyover" ramp to PA 23
  - Replace PA 23 bridge over US 422
  
- Sullivan's Bridge Trail Project**
  - ③ • Build new four-span Sullivan's Bridge over Schuylkill River
  - ③ • Replace Trooper Road Bridge over Schuylkill River Trail
  - ③ • Rehabilitate Trooper Road Bridge over Norfolk Southern Railroad lines
  
- ④ **North Gulph Road Relocation Project**
  - Relocate North Gulph Road to improve operations and reduce impacts on VFNHP
  - Improve geometric layout and traffic operations

SR0023 Section RFB (NPS Sponsored)  
Construction Complete: August 2016

SR3051-C22 (Sullivan's Bridge)  
Constr. Complete: August 2016

Construction Completed -  
Late 2015

Construction Scheduled:  
Estimated 2025-2027

Construction Completed:  
November 2020

**LEGEND**

--- approximate boundary of Valley Forge National Historical Park

0 400 800 FT

Figure 2

September 15, 2020