

# **2025 D12 BRIDGE PRESERVATION**

# SCOPE OF WORK

This project is for the bridge preservation of nine structures in Fayette and Westmoreland counties. Work will consist of latex overlay of the existing concrete deck and expansion dam repair/replacement for two structures:

- Route 1011 (Midget Camp Rd) over Hendricks Creek in Fairfield Township, Westmoreland County
- Route 3014 (Hunker Waltz Mill Rd) over Sewickley Creek in Hempfield Township, Westmoreland County

New asphalt overlay and joint repair will occur on two structures:

- Route 4003 (Brownsville Albany Rd) over Redstone Creek in Brownsville and Jefferson Township, Fayette County
- Route 4083 (Falcon Park Rd) over Pucketa Creek in the City of New Kensington, Westmorland County.

Epoxy overlay and substructure repair will occur on one structure:

- I-70 over SR 3014 in Hempfield Township, Westmoreland County

Repairs to the underneath of the structure will occur on four structures:

- Route 0981 (Lloyd Ave) over Monastery Run in Unity Township, Westmoreland County
- Route 1007 (Ross Mt Park Rd) over Branch of Hendricks Creek in Fairfield Township, Westmoreland County



# SCOPE OF WORK

- Route 3091 (New Stanton Youngwood Rd) over Branch of Sewickley Creek in New Stanton Borough, Westmoreland County
- Route 8007 (New Stanton Youngwood Rd to Route 119) over Branch of Sewickley Creek in New Stanton Borough, Westmoreland County



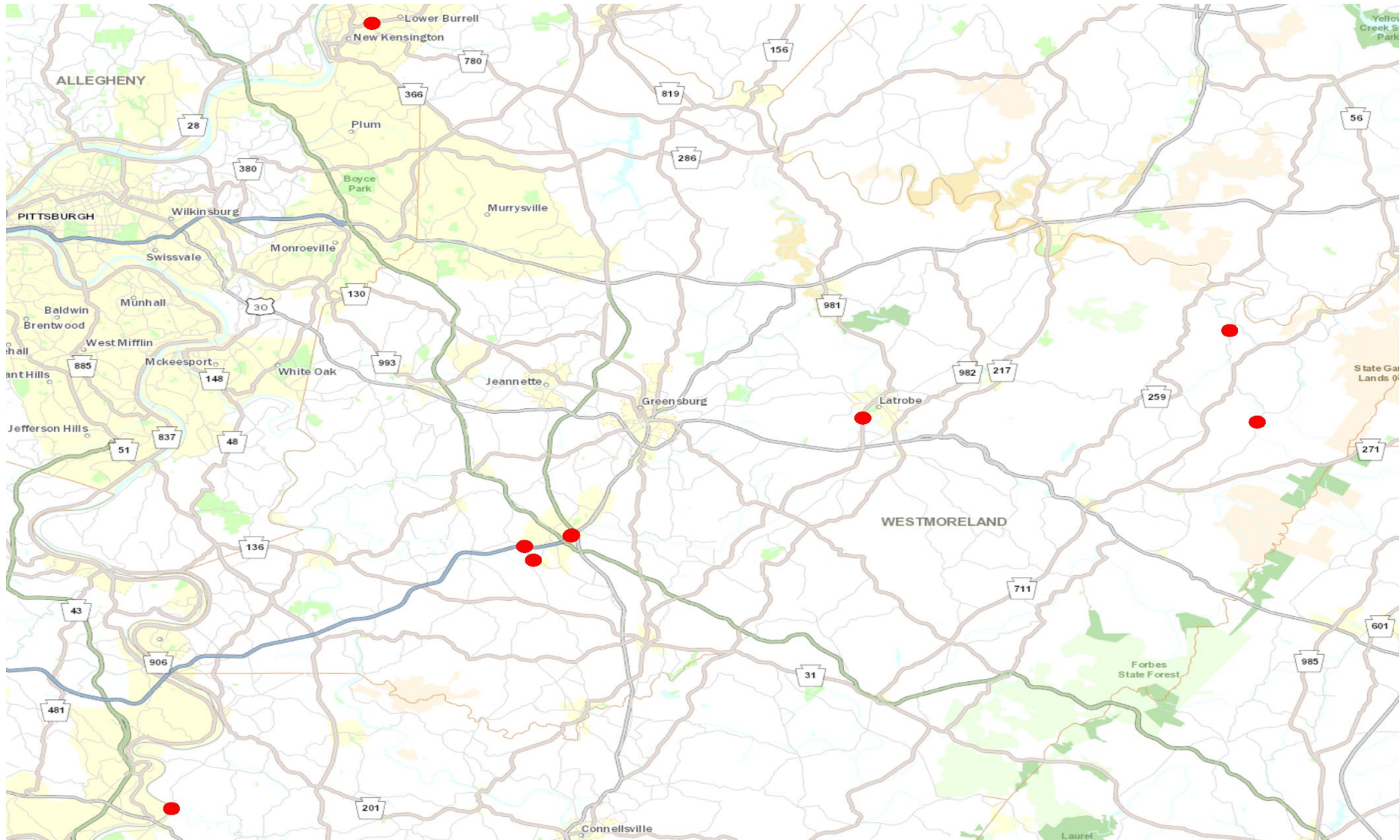
# TRAFFIC IMPACTS

- Route 1011 (Midget Camp Rd) Traffic will be maintained with a detour during construction approximately 4 weeks.
- Route 3014 (Hunker Waltz Mill Rd) Traffic will be maintained with a detour during construction approximately 4 weeks.
- Route 4003 (Brownsville Albany Rd) Traffic will be maintained with phasing during construction approximately 4 weeks.
- Route 4083 (Falcon Park Rd) Traffic will be maintained with phasing during construction approximately 4 weeks.
- I-70 over SR 3014 Traffic will be maintained with phasing during construction approximately 1 week.
- Route 0981 (Lloyd Ave) Traffic will not be affected during construction.
- Route 1007 (Ross Mt Park Rd) Traffic will not be affected during construction.
- Route 3091 (New Stanton Youngwood Rd) Traffic will not be affected during construction.
- Route 8007 (New Stanton Youngwood Rd to Route 119) Traffic will not be affected during construction.





# PROJECT LOCATION MAP





# ROUTE 1011

## Midget Camp Road

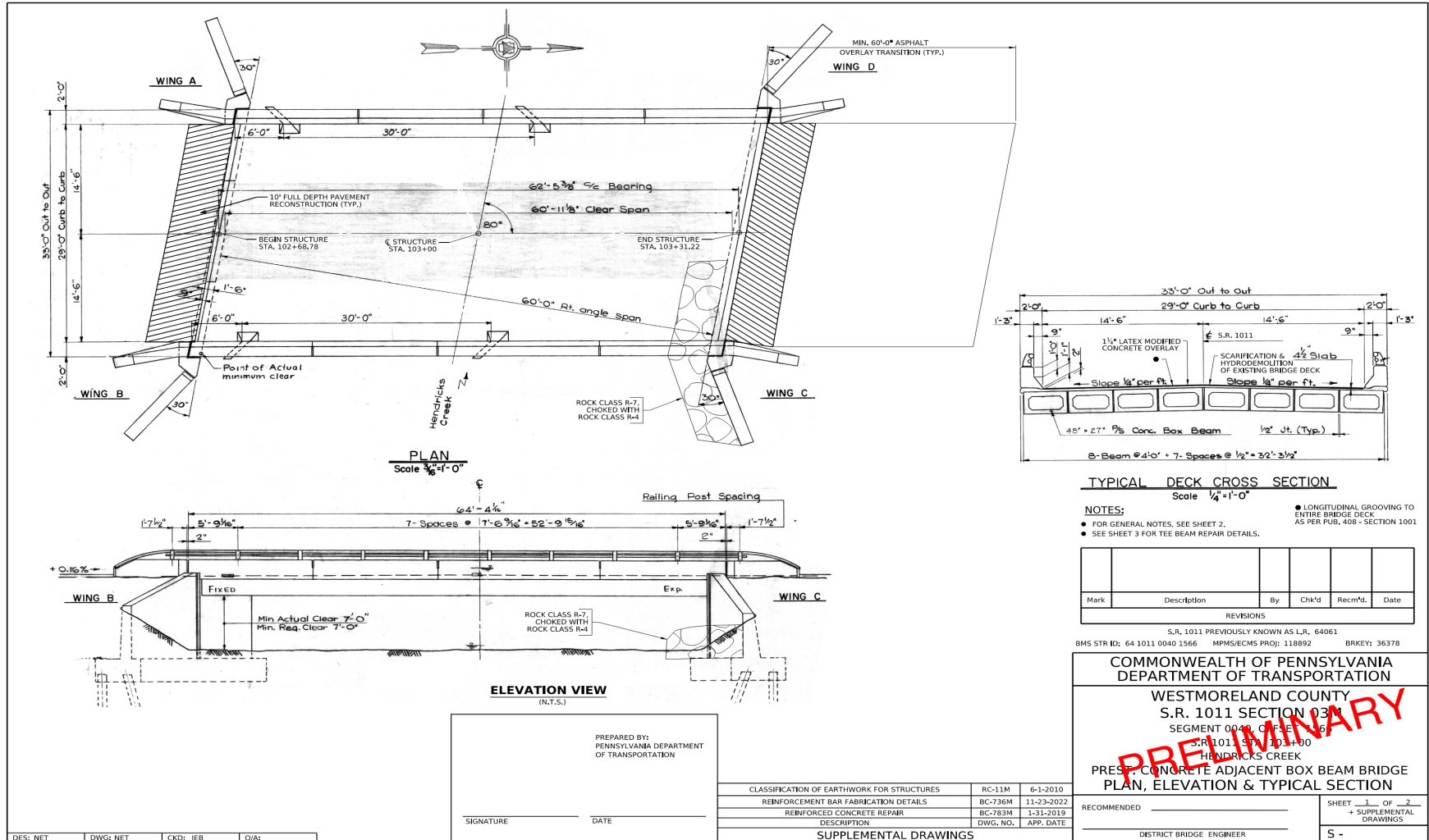


07/11/2023





# PRELIMINARY ROUTE 1011



# ROUTE 3014

## Hunker Waltz Mill Road







# ROUTE 4003

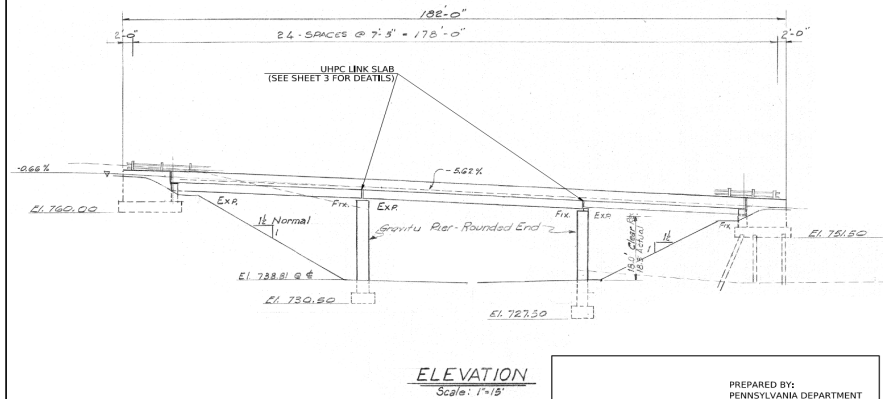
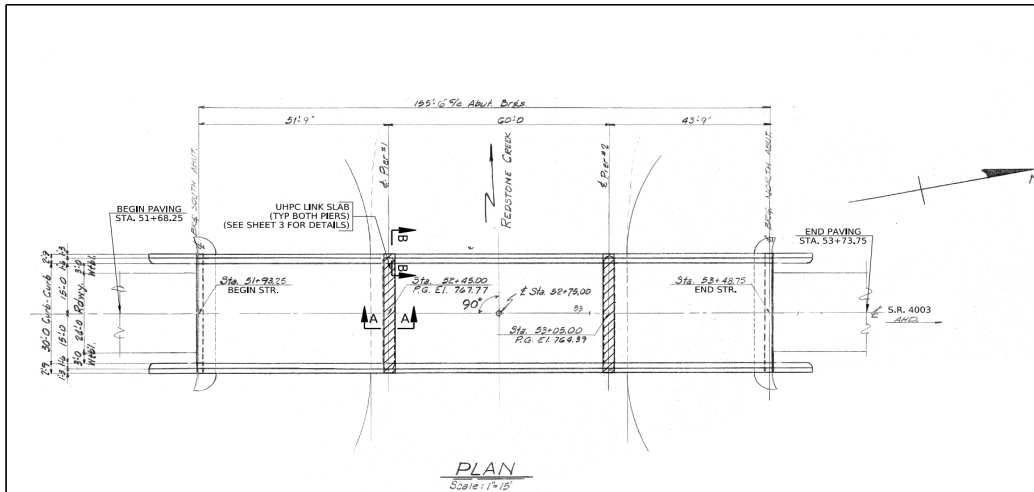
## Brownsville Albany Road



2023/03/08



# PRELIMINARY ROUTE 4003

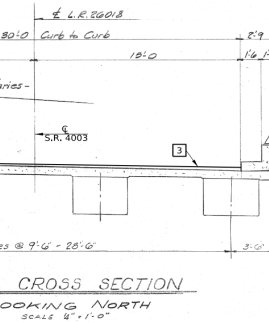


PREPARED BY:  
PENNSYLVANIA DEPARTMENT  
OF TRANSPORTATION

SIGNATURE \_\_\_\_\_ DATE \_\_\_\_\_

OVERLAY TRANSITIONS AND PAVING NOTCHES	RC-28M	09-01-23
REINFORCEMENT BAR FABRICATION DETAILS	BC-736M	11-23-22
REINFORCED CONCRETE REPAIR	BC-783M	01-31-19
TYPICAL WATERPROOFING AND EXPANSION DETAILS	BC-788M	11-23-22
DESCRIPTION	DWG. NO.	APP. DATE

## SUPPLEMENTAL DRAWINGS



## CONSTRUCTION NOTES:

- 1 MILL 3" BITUMINOUS OVERLAY FROM STATION 51+68.25 TO STATION 53+73.75.
- 2 PERFORM AS DIRECTED TYPE 2 CONCRETE DECK REPAIRS AND INSTALL UHPC LINK SLABS AT PERS 1 AND 2.
- 3 APPLY BITUMINOUS TACK COAT TO ENTIRE BRIDGE DECK AREA AND APPROACHES (STA. 51+68.25 TO STA 53+73.75). PLACE 1 1/2" DEPTH SUPERPAVE ASPHALT MIXTURE DESIGN, WEARING COURSE (LEVELING), PG 645-22, 0.3 TO < 3.0 MILLION ESALS, 9.5 MM MIX, SRL-L AT BOTH APPROACHES (STA. 51+68.25 TO STA. 51+83.25 AND STA. 53+48.75 TO STA. 53+73.75). PLACE SUPERPAVE ASPHALT MIXTURE DESIGN, WEARING COURSE (LEVELING), PG 645-22, 0.3 TO < 3.0 MILLION ESALS, 9.5 MM MIX, SRL-L AND MEMBRANE WATERPROOFING, AS DESCRIBED ON SHEET 2, ON ENTIRE BRIDGE DECK AREA (STA. 51+92.25 TO STA. 53+48.75). APPLY BITUMINOUS TACK COAT TO ENTIRE ASPHALT LEVELING (STA 51+68.25 TO STA 53+73.75) AND PLACE 1 1/2" SUPERPAVE ASPHALT MIXTURE DESIGN, WEARING COURSE, PG 645-22, 0.3 TO < 3.0 MILLION ESALS, 9.5 MM MIX, 1 1/2" DEPTH, SRL-M (STA 51+68.25 TO STA 53+73.75).

## NOTES:

- FOR GENERAL NOTES, SEE SHEET 2.
- SEE SHEET 3 FOR SECTIONS A-A & B-B AND UHPC LINK SLAB DETAILS.

Mark	Description	By	Chk'd	Recm'd.	Date
REVISIONS					

S.R. 4003 PREVIOUSLY KNOWN AS L.R. 26018  
BMS STR ID: 26 4003 0140 0185 HPMS/ECMS PROJ: 118892 BRKEY: 16965

COMMONWEALTH OF PENNSYLVANIA  
DEPARTMENT OF TRANSPORTATION

FAYETTE COUNTY  
S.R. 4003 SECTION 04M

SEGMENT 0140, OFF EAST 0185  
S.R. 4003 S. 151.5' W. 151.5' N.  
OVER REDSTONE CREEK  
SPAN 152.5' STR. CONC. SPREAD  
BOX BEAM BRIDGE  
PLAN, ELEVATION & TYPICAL SECTION

RECOMMENDED _____	SHEET 1 OF 3 + SUPPLEMENTAL DRAWINGS
DISTRICT BRIDGE ENGINEER _____	S -

DES: NET DWG: NET CKD: JEB Q/A:





# ROUTE 4083

## Falcon Park Road, New Kensington

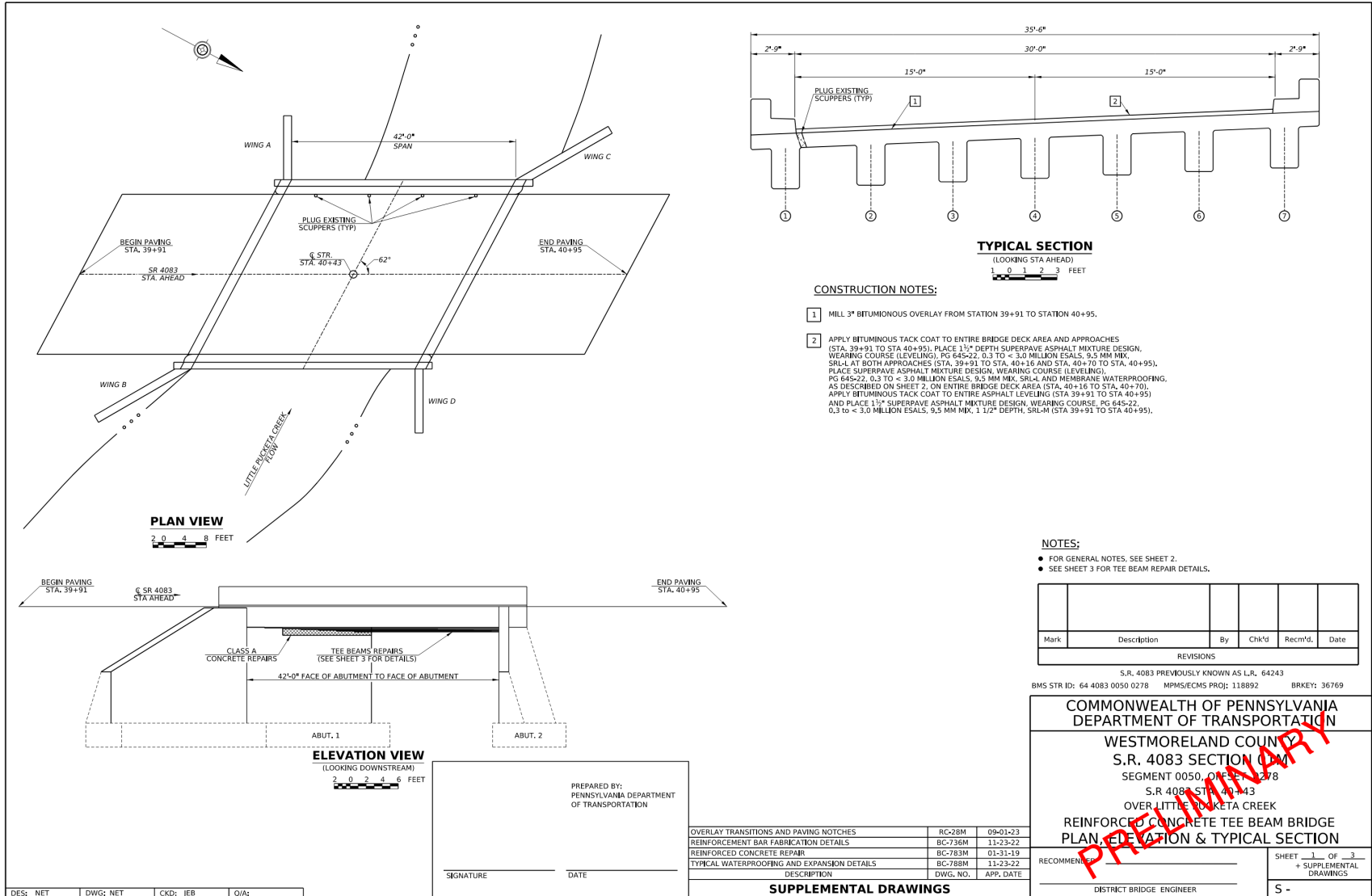


2024/02/27





# PRELIMINARY ROUTE 4083

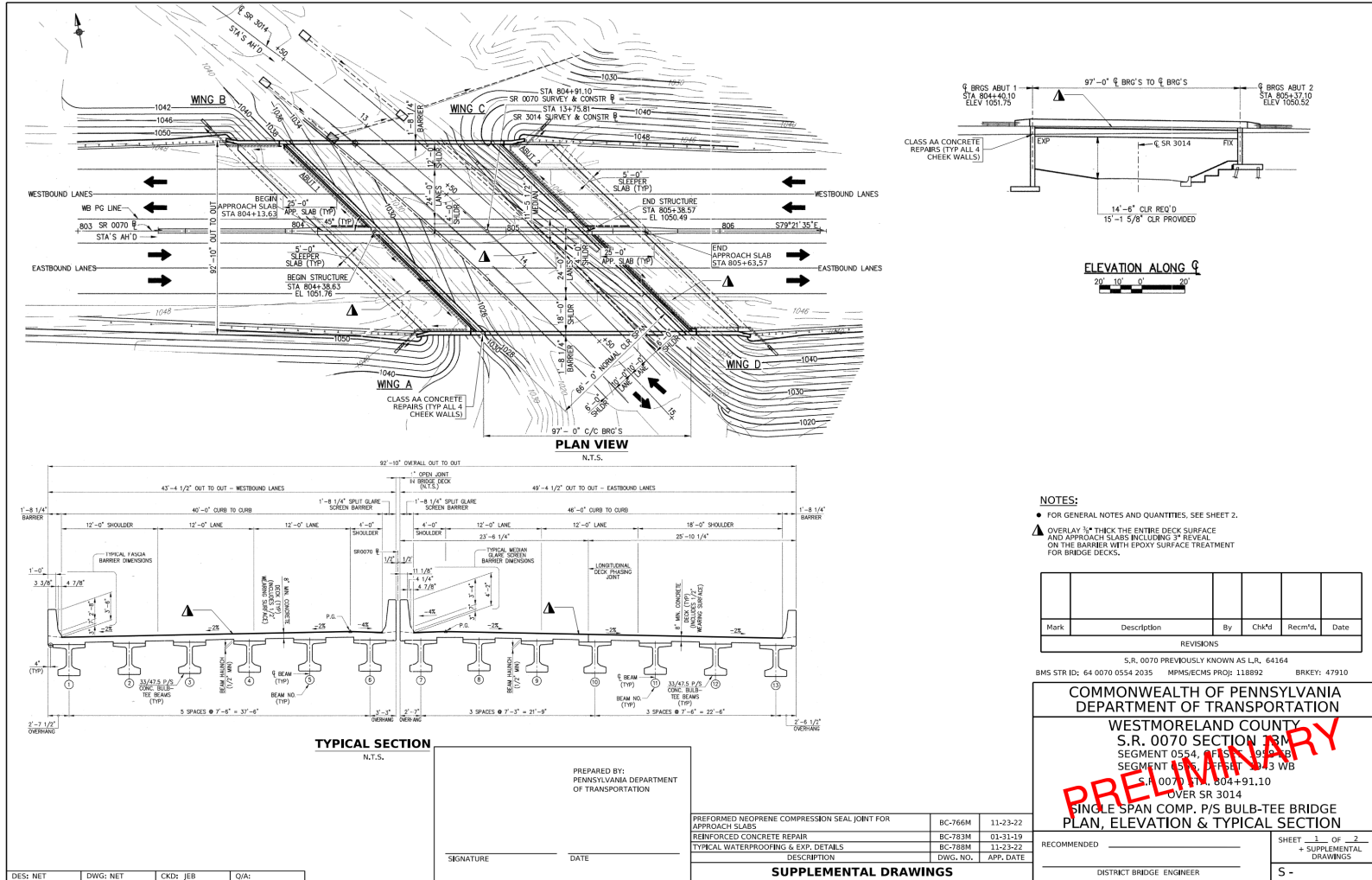


# ROUTE 70

I-70 over SR 3014



# PRELIMINARY ROUTE 70





# ROUTE 0981

## Lloyd Ave



**PLAN VIEW (N.T.S.)**

WING B, WING C, WING D, WING A

ROCK CLASS R-4, CHOKED WITH ROCK CLASS R-4

STA AHEAD S.R. 0981

60'-0" EXISTING R/W

60'-0" EXISTING R/W

40'-0" NORMAL CLEAR

10'-0"

REMOVE AND RESET GUDDERAIL AS NEEDED DURING THE CONSTRUCTION OF THE RCE

MONASTERY RUN

CAR WASH PARKING LOT

CAR WASH BUILDING

**ELEVATION VIEW (LOOKING UPSTREAM)**

40'-0" FACE OF ABUTMENT TO FACE OF ABUTMENT

CL SR 0981 STA AHEAD

TEE BEAMS REPAIRS (SEE SHEET 3 FOR DETAILS)

CLASS A CONCRETE REPAIRS

ABUT. 1

ABUT. 2

**NOTES:**

- FOR GENERAL NOTES, SEE SHEET 2.
- SEE SHEET 3 FOR TEE BEAM REPAIR DETAILS.

**REVISIONS**

Mark	Description	By	Chk'd	Recm'd.	Date
REVISIONS					

**TYPICAL SECTION (LOOKING STA AHEAD)**

43'-10"

20'-0"

40'-0"

20'-0"

TEE BEAM REPAIRS (TYP BEAMS 4-6)

1 0 1 2 3 FEET

PREPARED BY: PENNSYLVANIA DEPARTMENT OF TRANSPORTATION

SIGNATURE \_\_\_\_\_ DATE \_\_\_\_\_

**REINFORCEMENT BAR FABRICATION DETAILS**

DESCRIPTION	DWG. NO.	APP. DATE
REINFORCEMENT BAR FABRICATION DETAILS	BC-736M	11-23-22
REINFORCED CONCRETE REPAIR	BC-783M	01-31-19

**SUPPLEMENTAL DRAWINGS**

RECOMMENDED \_\_\_\_\_

DISTRICT BRIDGE ENGINEER

SHEET 1 OF 3 + SUPPLEMENTAL DRAWINGS

S -

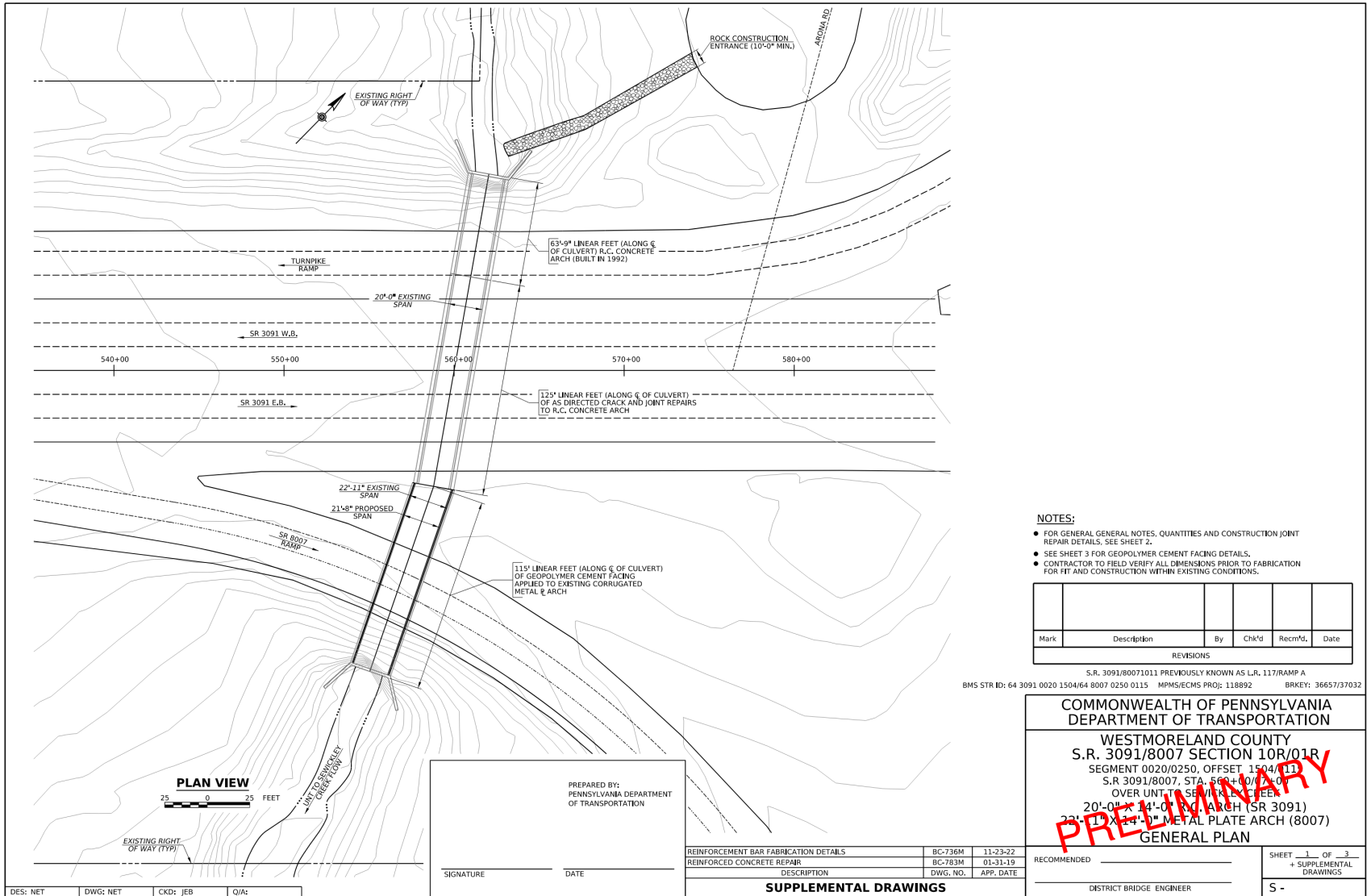


# ROUTE 3091/8007

## New Stanton Youngwood Road



# PRELIM ROUTE 3091



# CONTACT INFORMATION

## **Project Manager**

Chad Kezmarsky

724-439-7257

[ckezmarsky@pa.gov](mailto:ckezmarsky@pa.gov)

## **Press Officer**

Laina Aquiline

724-415-3748

[laquiline@pa.gov](mailto:laquiline@pa.gov)

