

2025 D12 BRIDGE PRESERVATION WASHINGTON & GREENE COUNTIES

SCOPE OF WORK

This project is for the bridge preservation of eight structures in Greene in Washington counties. Work will consist of latex overlay of the existing concrete deck and expansion dam repair/replacement for five structures:

- Route 1003 (Porter Street) over I-79 in Franklin Township, Greene County

Traffic will be maintained with a detour during Construction approximately 4 weeks. The activities will be placement of a 6" structure foundation base drain in behind both ends of the structure at the beam seat elevation. The existing expansion joints will be fully replaced. A latex modified concrete overlay of the bridge deck with a small section of approach pavement to transition into the newly constructed Bridge deck overlay. New down spouting will be installed at all locations and minor shoulder closures on I-79 will be required to place the new down spouting.

- Route 2030 (Piersol Avenue) over Pigeon Creek in Bentleyville Borough, Washington County

Traffic will be maintained with a detour during Construction approximately 2 weeks. The sidewalk will remain open during construction for pedestrians. The activities will be placement of a 6" structure foundation base drain in behind both ends of the structure at the beam seat elevation. The existing expansion joints will be fully replaced. An epoxy overlay of the bridge deck with a small section of approach pavement to transition into the newly constructed Bridge deck overlay.

- Route 4069 (Paris Colliers Road) over Route 22 in Hanover Township, Washington County

Traffic will be maintained with phasing during Construction approximately 8 weeks. The activities will be placement of a 6" structure foundation base drain in behind both ends of the structure at the beam seat elevation. The existing expansion joints will be fully replaced. A latex modified concrete overlay of the bridge deck with a small section of approach pavement to transition into the newly constructed Bridge deck overlay.

- Route 4071 (Laurel Road) over Route 22 in Hanover Township, Washington County

Traffic will be maintained with phasing during Construction approximately 8 weeks. The activities will be placement of a 6" structure foundation base drain in behind both ends of the structure at the beam seat elevation. The existing expansion joints will be fully replaced. A latex modified concrete overlay of the bridge deck with a small section of approach pavement to transition into the newly constructed Bridge deck overlay.

New asphalt overlay and joint repair will occur on one structure:

- Route 3023 (Old Brick Road) over I-70 in Donegal Township, Washington County

Traffic will be maintained with a detour during Construction approximately 2 weeks. The existing expansion joints seals will be replaced. An epoxy overlay of the bridge deck with a small section of approach pavement to transition into the newly constructed Bridge deck overlay. New down spouting will be installed at all locations and minor shoulder closures on I-70 will be required to place the new down spouting.

Epoxy overlay and joint repair will occur on one structure:

- Route 2056 (Barrett Hill Road) over I-79 in Amwell Township, Washington County

Traffic will be maintained with a detour during Construction approximately 4 weeks. The activities will be placement of a 6" structure foundation base drain in behind both ends of the structure at the beam seat elevation. The existing expansion joints will be fully replaced. An epoxy overlay of the bridge deck with a small section of approach pavement to transition into the newly constructed Bridge deck overlay. New down spouting will be installed at all locations and minor shoulder closures on I-79 will be required to place the new down spouting.

- Route 3034 (Main Street) over I-70 in Donegal Township, Washington County

Traffic will be maintained with a detour during Construction approximately 3 weeks. The existing expansion joints seals will be replaced. A new asphalt overlay of the bridge deck with a small section of approach pavement to transition into the newly constructed Bridge deck overlay. New down spouting will be installed at all locations and minor shoulder closures on I-70 will be required to place the new down spouting.

- Route 19 (Washington Road) over Route 519 in North Strabane Township, Washington County Traffic will be maintained with a phasing during Construction approximately 2 weeks. New deck sealer and new joint seals.

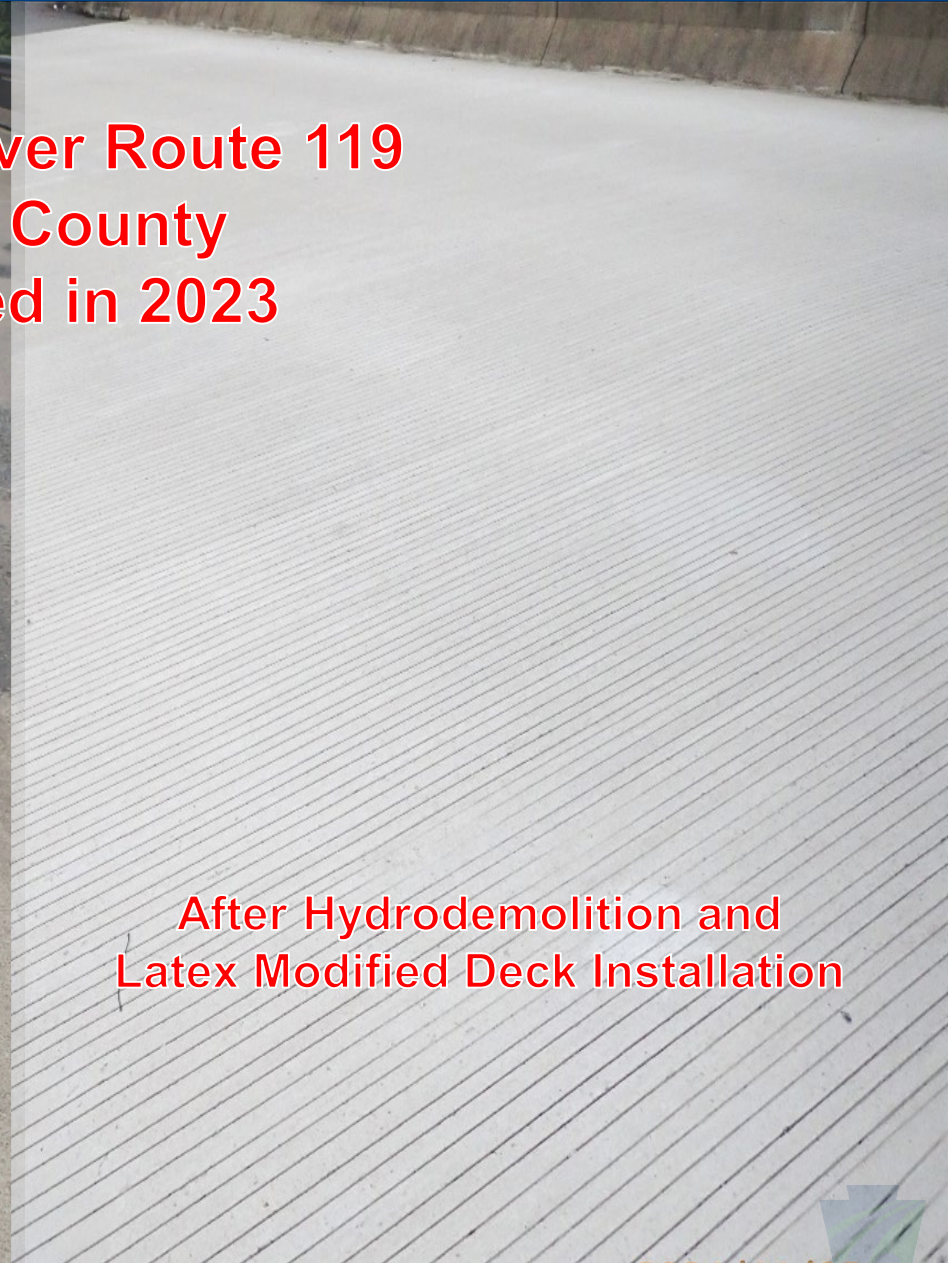


BEFORE AND AFTER LATEX OVERLAY EXAMPLE



Route 1069 over Route 119
Fayette County
Completed in 2023

Before Hydrodemolition and Latex
Modified Deck Installation



After Hydrodemolition and
Latex Modified Deck Installation



EPOXY BEFORE & AFTER

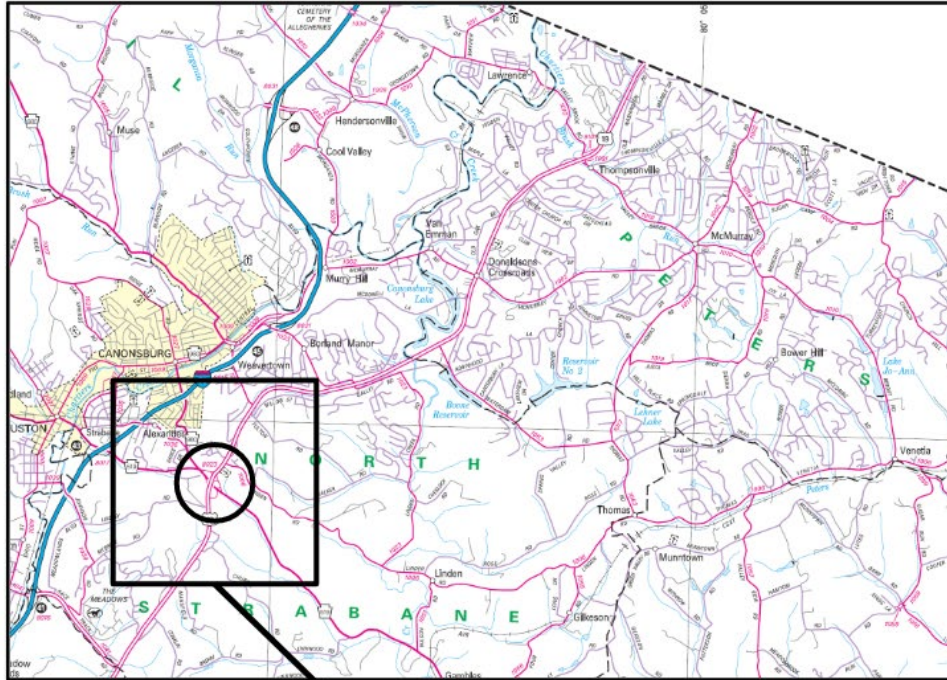


This is a detailed topographic map of a region in Georgia, USA, centered around the Savannah River and its tributaries. The map shows the following features:

- Water Bodies:** The Savannah River flows from the top left towards the bottom right. Major tributaries include Walker's Run, Little Back River, Back River, Middle Back River, Little Back River, Back River, Middle Back River, Little Back River, Back River, Middle Back River, and Little Back River. Other smaller streams like Rees Mill Run, Little Back River, and Back River are also shown.
- Towns and Settlements:** Lumpkin is located in the center-right. Milledgeville is to the north of Lumpkin. Macon is to the south of Lumpkin. Other smaller towns like Rees Mill, Little Back River, and Back River are also marked.
- Infrastructure:** Major roads are shown, including US Highway 19 (labeled 19) and US Highway 28 (labeled 28). A black box highlights a specific area of interest near the river, and a black circle is drawn around a point on the river within this box.
- Topography:** The map shows various elevations and terrain features, with labels like "1000" and "1100" indicating elevation in feet.
- Geographic Labels:** The word "GEORGIA" is written across the top of the map. The word "SAVANNAH" is written along the river.



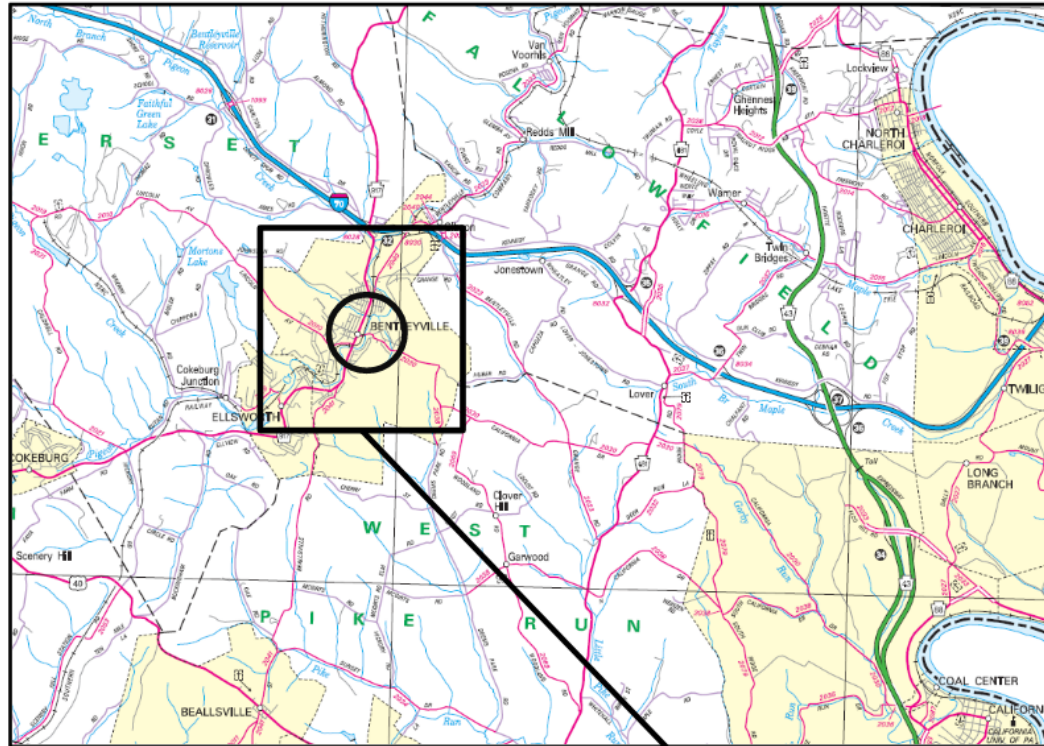
SR 0019 LOCATION MAP



62-0019-0461-0000
over SR 0519



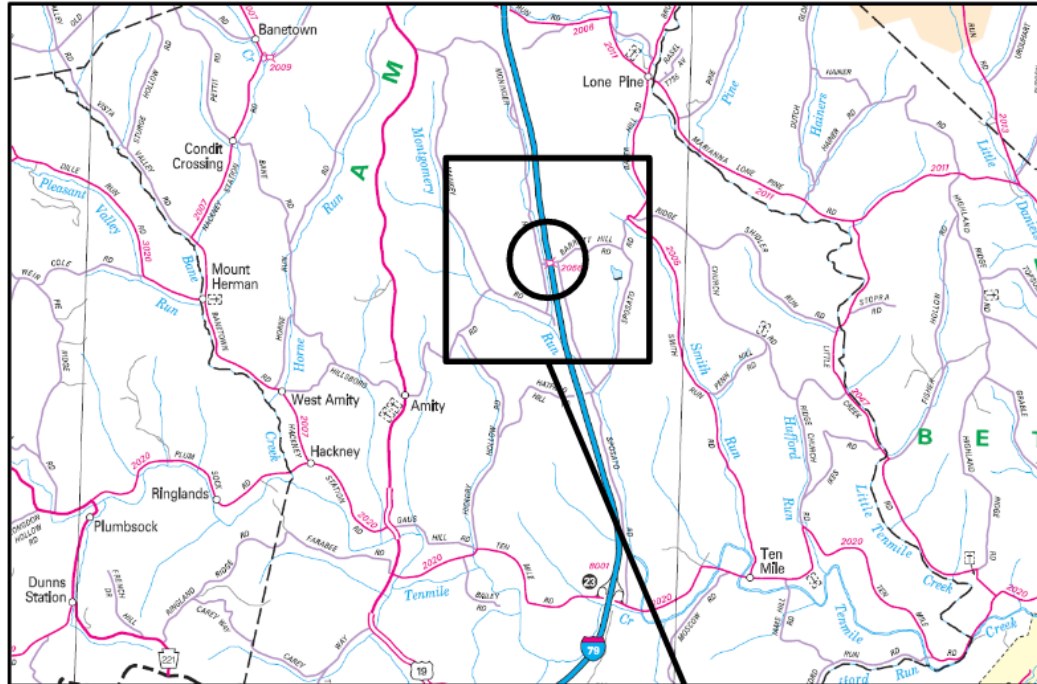
SR 2030 LOCATION MAP



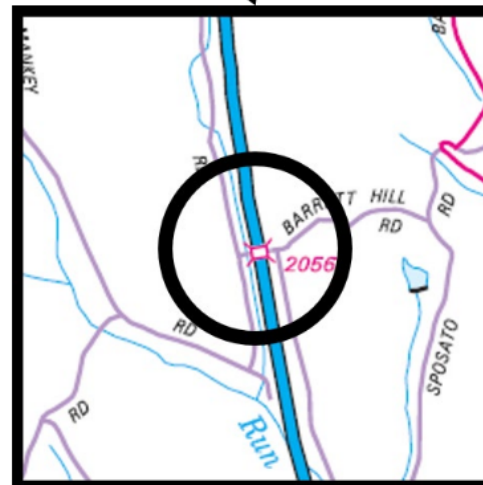
**62-2030-0010-0373
over Pigeon Creek**



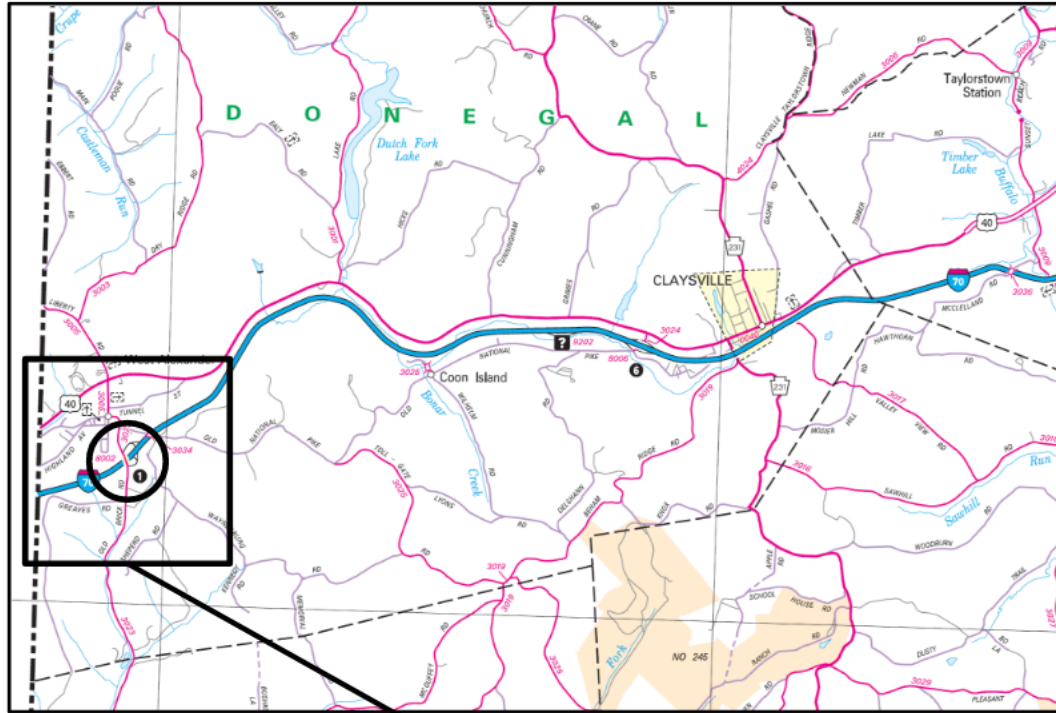
SR 2056 LOCATION MAP



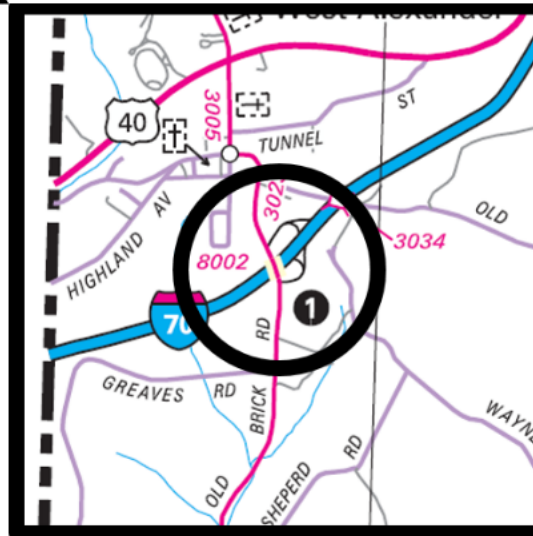
**62-2056-0010-0000
over SR 0079**



SR 3023 LOCATION MAP

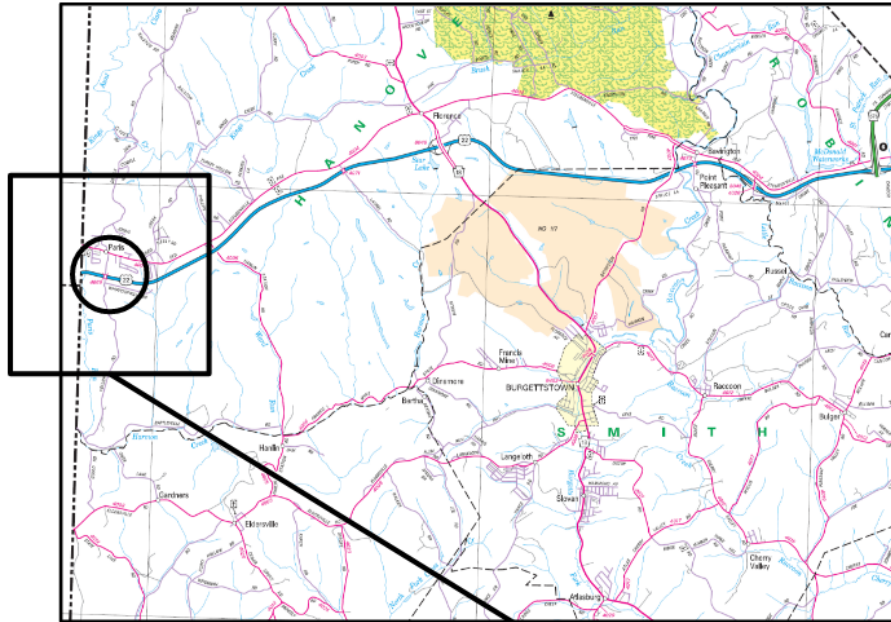


62-3023-0060-0653
over SR 0070

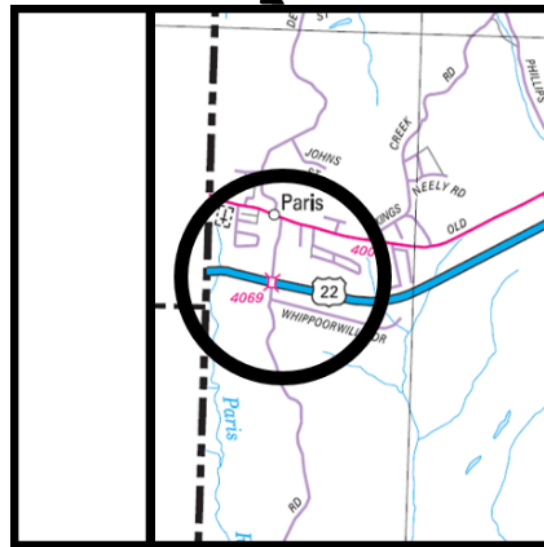




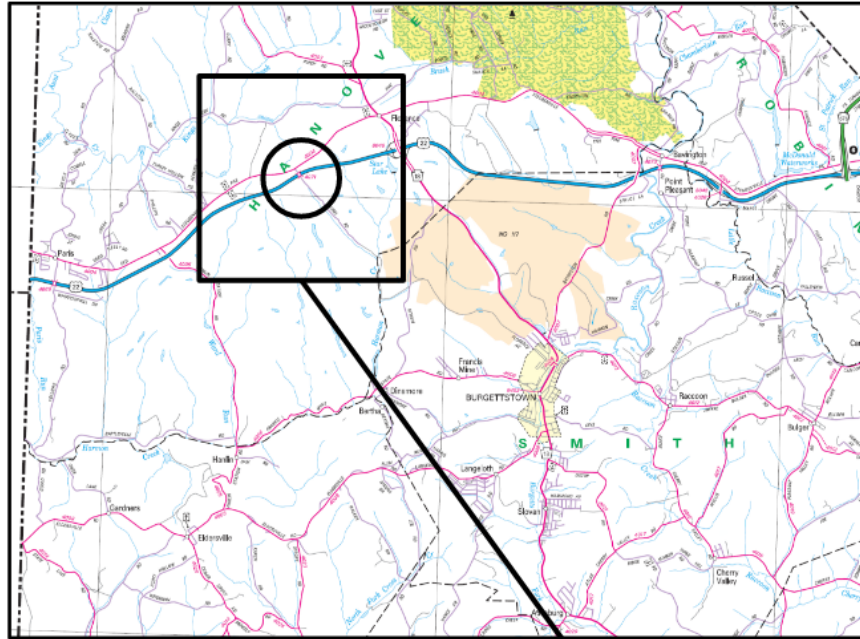
SR 4069 LOCATION MAP



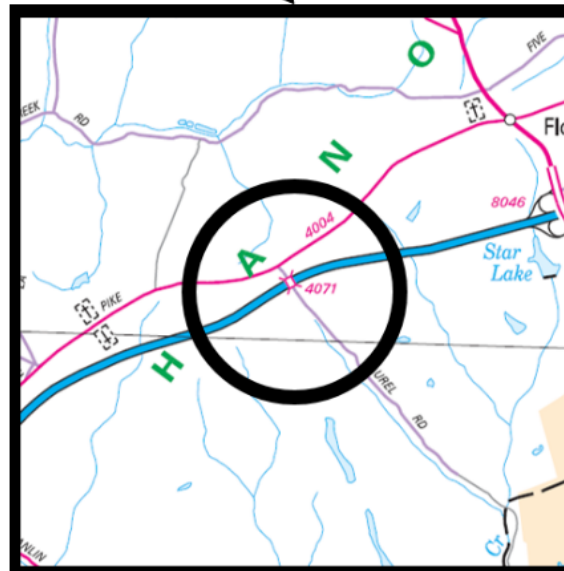
62-4069-0010-0000
over SR 0022



SR 4071 LOCATION MAP



62-4071-0010-0000
over SR 0022



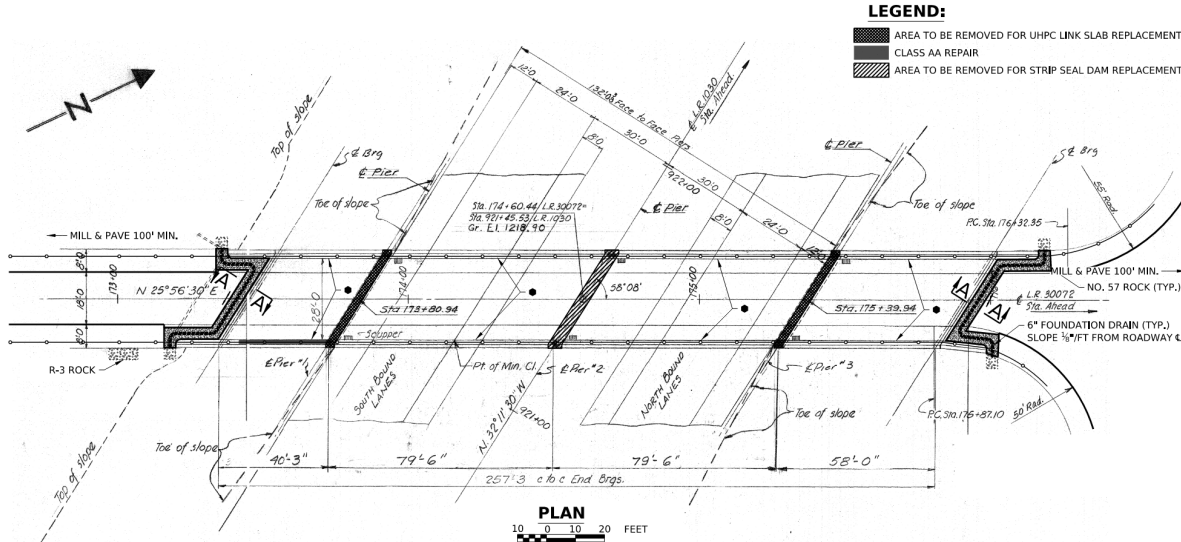
ROUTE 1003



ROUTE 1003



PRELIMINARY ROUTE 1003 PLAN



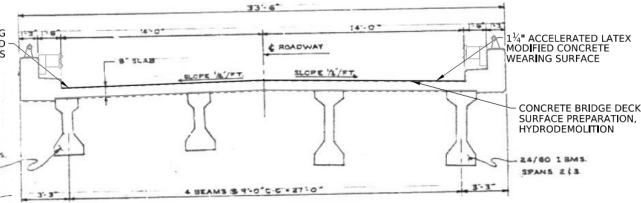
TABULATION OF BRIDGE BID ITEMS & APPROXIMATE QUANTITIES

ITEM NO.	ITEM	UNIT	QUANTITY
0203-0001	CLASS 1 EXCAVATION	CY	80
0203-0006	SAW CUTTING	LF	133
0205-0263	SELECTED BORROW EXCAVATION ROCK, CLASS R-3	CY	4
0205-0285	SELECTED BORROW EXCAVATION, COARSE AGGREGATE, NO. 57	CY	58
0212-0014	GEOTEXTILE, CLASS 4, TYPE A	SY	156
0219-0001	EXPANDED POLYSTYRENE (EPS) GEOFOAM BLOCK, TYPE 1	CY	4
0224-0020	FOUNDATION DRAIN, 6-INCH DIAMETER	LF	125
0469-0021	ASPHALT JOINT AND CRACK SEALING FOR CONCRETE SURFACES	LF	481
0540-0704	CLASS AA CEMENT CONCRETE	CY	3
0680-0005	FIBERGLASS MEMBRANE WATERPROOFING	SY	76
1001-0970	MECHANICAL TEXTURING WITH TRANSVERSE SAWED GROOVES	SY	766
1002-0052	REINFORCEMENT BARS, EPOXY COATED	LBS	453
1039-0010	CONCRETE BRIDGE DECK SURFACE PREPARATION, HYDRODEMOLITION	SY	766
1040-0120 (2)	CONCRETE BRIDGE DECK REPAIR ACCELERATED, TYPE 2 USING ASC	SY	100
1041-0010	SCARIFICATION, 1/2" DEPTH	SY	766
1042-0004	12 HOUR ACCELERATED LATEX MODIFIED CONCRETE WEARING SURFACE	SY	766
	1/4" FINISH		
1042-0080	12 HOUR ACCELERATED LATEX MODIFIED CONCRETE, VARIABLE DEPTH	CY	11
1051-0000	DOWNSPROUTING	LF	185
1099-1016	ACCELERATED EXPANSION DAM REPLACEMENT, 4" MOVEMENT		
	UNFORESEEN STRUCTURE REPAIRS	DOLLAR	2500
9000-0003 (1)	CLASS AA REPAIR	SY	46
9000-0004 (1)	CLEAN AND FLUSH SCUPPER	EACH	6
9000-0007(1)	TEMPORARY JOINTING	LS	5
9000-0008 (1)	SEALING EXISTING JOINTS IN BRIDGE PARAPET	LF	122
9000-1099 (1)	UHPCC LINX SLAB	LF	79

TABULATION OF ROADWAY BID ITEMS & APPROXIMATE QUANTITIES

ITEM NO.	ITEM	UNIT	QUANTITY
0313-0322	SUPERPAVE ASPHALT MIXTURE DESIGN, BASE COURSE, PG 645-22, < 0.3 MILLION ESALS, 25.0 MM MIX, 4" DEPTH	SY	60
0350-0106	SUBBASE 6" DEPTH (NO. 2A)	SY	60
0413-0195	SUPERPAVE ASPHALT MIXTURE DESIGN, WEARING COURSE, PG 645-22, < 0.3 MILLION ESALS, 9.5 MM MIX, 1 1/2" DEPTH, SRL-L	SY	853
0413-2059	SUPERPAVE ASPHALT MIXTURE DESIGN, WEARING COURSE (LEVELING), PG 645-22, < 0.3 MILLION ESALS, 9.5 MM MIX, SRL-L	TON	23
0460-0003	ASPHALT TACK COAT (T/N/T/CNT)	SY	913
0491-0013	MILING OF ASPHALT PAVEMENT SURFACE, 2" DEPTH, MILLED MATERIAL RETAINED BY CONTRACTOR	SY	823

MECHANICAL TEXTURING WITH TRANSVERSE SAWED GROOVES



TYPICAL SECTION

2 0 2 4 FEET

Mark	Description	By	Chk'd	Rec'd	Date
REVISIONS					

S.R. 1003 PREVIOUSLY KNOWN AS L.R. 30072

BMS STR ID: 30-1003-0060-1028 MPMS/ECMS PROJ: 121012 BRKEY: 18191

**COMMONWEALTH OF PENNSYLVANIA
DEPARTMENT OF TRANSPORTATION**

**GREENE COUNTY
S.R. 1003 SECTION 02R**

SEGMENT 0060 OFFSET 1028
S.R. 1003 - STA. 921+45.53
OVER INTERSTATE 0079

PRESTRESSED CONCRETE BRIDGE

GENERAL PLAN, ELEVATION AND TYP. SECTION

RECOMMENDED _____

DISTRICT BRIDGE ENGINEER

SHEET 1 OF 4

+ SUPPLEMENTAL DRAWINGS

S - 42940

NOTES:

FOR GENERAL NOTES, SEE SHEET 5 OF ROADWAY PLAN

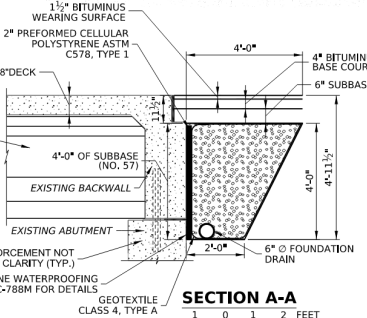
SHEET NUMBER	TITLE
1	GENERAL PLAN, ELEVATION AND TYP. SECTION
2	LINK SLAB DETAILS
3	LINK SLAB DETAILS CONT'D
4	REINFORCEMENT BAR SCHEDULE AND STRIP SEAL DAM DETAILS

CLASSIFICATION OF EARTHWORK FOR STRUCTURES	RC-11M	06-01-10
BACKFILL AT STRUCTURES	RC-12M	11-01-22
OVERLAY TRANSITIONS AND PAVING NOTCHES	RC-28M	09-01-23
BRIDGE DRAINAGE	BC-751M	01-31-19
NEOPRENE STRIP SEAL DAM FOR PRESTRESSED CONCRETE & STEEL I-BEAM BRIDGES	BC-767M	11-23-22
REINFORCED CONCRETE REPAIR	BC-783M	01-31-19
TYPICAL WATERPROOFING AND EXPANSION DETAILS	BC-788M	11-23-22
MECHANICAL CONNECTION DETAILS	BC-798M	02-14-23
DESCRIPTION	DWG. NO.	APP. DATE

SUPPLEMENTAL DRAWINGS

PREPARED BY:
PENNSYLVANIA DEPARTMENT OF TRANSPORTATION
ENGINEERING DISTRICT 12-0
UNIONTOWN, PA. 15401

SIGNATURE _____ DATE _____



DES: JTD DWG: JTD CKD: MST Q/A: XXX

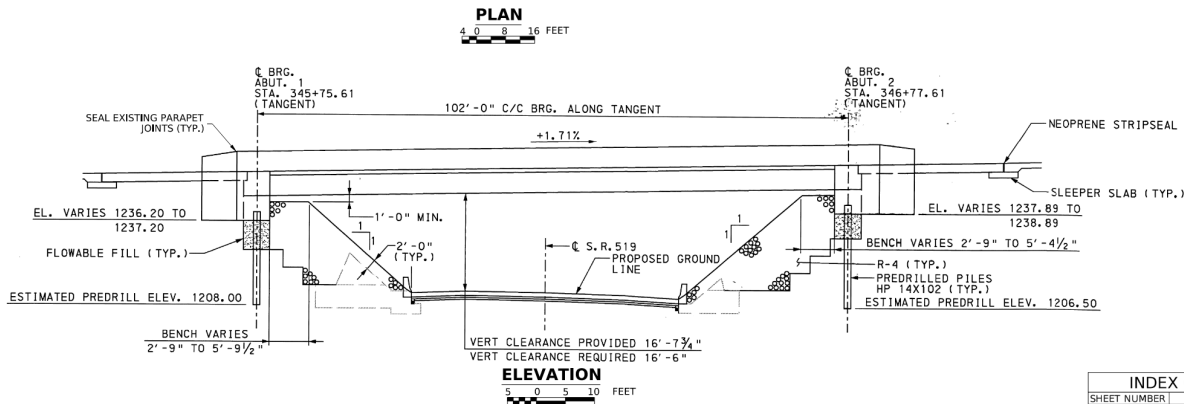
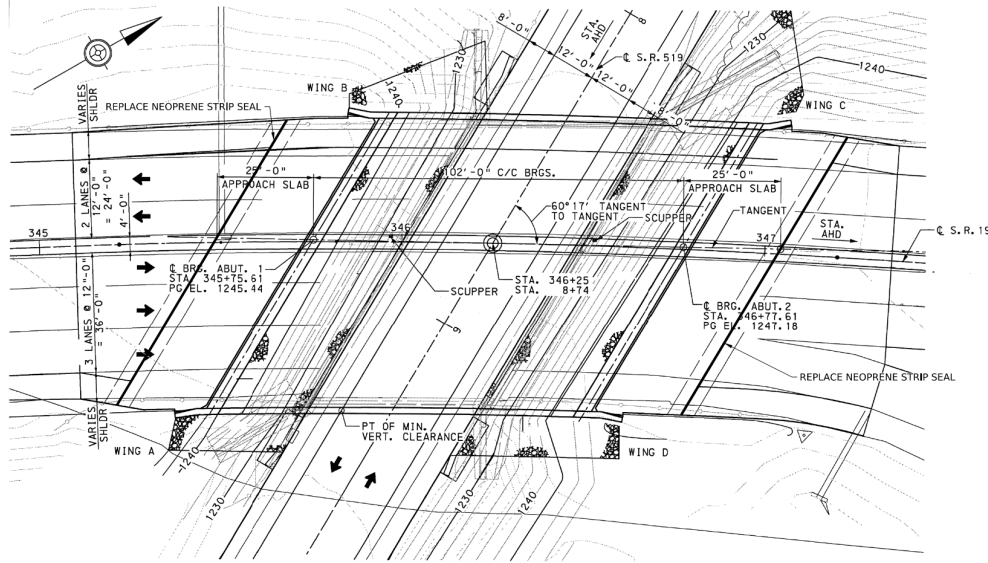
ROUTE 0019



ROUTE 0019



PRELIMINARY ROUTE 0019 PLAN



PREPARED BY:
PENNSYLVANIA DEPARTMENT
OF TRANSPORTATION
ENGINEERING DISTRICT 12-0
UNIONTOWN, PA. 15401

SIGNATURE _____ DATE _____

TABULATION OF BRIDGE BID ITEMS & APPROXIMATE QUANTITIES
(62-0019-0460-0000)

1046-0010	EPOXY OVERLAY	SY	746
1090-1017	NEOPRENE STRIP SEAL GLAND REPLACEMENT	LF	93
9000-0008 (1)	SEALING EXISTING JOINT IN BRIDGE PARAPET	LF	7
9000-0009 (1)	SEALING EXISTING JOINT IN BRIDGE MEDIAN	LF	156

TABULATION OF BRIDGE BID ITEMS & APPROXIMATE QUANTITIES
(62-0019-0461-0000)

1046-0010	EPOXY OVERLAY	SY	534
1090-1017	NEOPRENE STRIP SEAL GLAND REPLACEMENT	LF	91
9000-0008 (1)	SEALING EXISTING JOINT IN BRIDGE PARAPET	LF	7
9000-0009 (1)	SEALING EXISTING JOINT IN BRIDGE MEDIAN	LF	156

(1) SEE SPECIAL PROVISIONS

NOTES:

- FOR GENERAL NOTES, SEE SHEET 5 OF ROADWAY PLAN
- FOR TYPICAL SECTION, SEE SHEET 2

Mark	Description	By	Chk'd	Rec'd	Date
REVISIONS					

S.R. 0019 PREVIOUSLY KNOWN AS L.R. 00108
BMS STR ID: 62-0019-0460-0000 MPMS/ECMS PROJ: 12102 BRKEY: 46832
62-0019-0461-0000 46840

COMMONWEALTH OF PENNSYLVANIA DEPARTMENT OF TRANSPORTATION

WASHINGTON COUNTY
S.R. 0019 SECTION 21R
SEGMENT 0460/0461 OFFSET 0000/0000
S.R. 0019 - STA. 346+25.00
OVER S.R. 0519 STA. 8+74.00
OVER 1-SP COMP. STEEL MULTI-GIRDER BRIDGE
GENERAL PLAN AND ELEVATION

RECOMMENDED _____
DISTRICT BRIDGE ENGINEER

SHEET 1 OF 2
+ SUPPLEMENTAL
DRAWINGS
S - 42941

INDEX OF DRAWING	
SHEET NUMBER	TITLE
1	GENERAL PLAN AND ELEVATION
2	TYPICAL SECTION

CLASSIFICATION OF EARTHWORK FOR STRUCTURES	RC-11M	06-01-10
BACKFILL AT STRUCTURES	RC-12M	11-01-22
OVERLAY TRANSITIONS AND PAVING NOTCHES	RC-28M	09-01-23
TYPICAL WATERPROOFING AND EXPANSION DETAILS	BC-788M	11-23-22
DESCRIPTION	DWG. NO.	APP. DATE

SUPPLEMENTAL DRAWINGS

DES: JTD DWG: JTD CKD: MST Q/A: XXX

ROUTE 2030



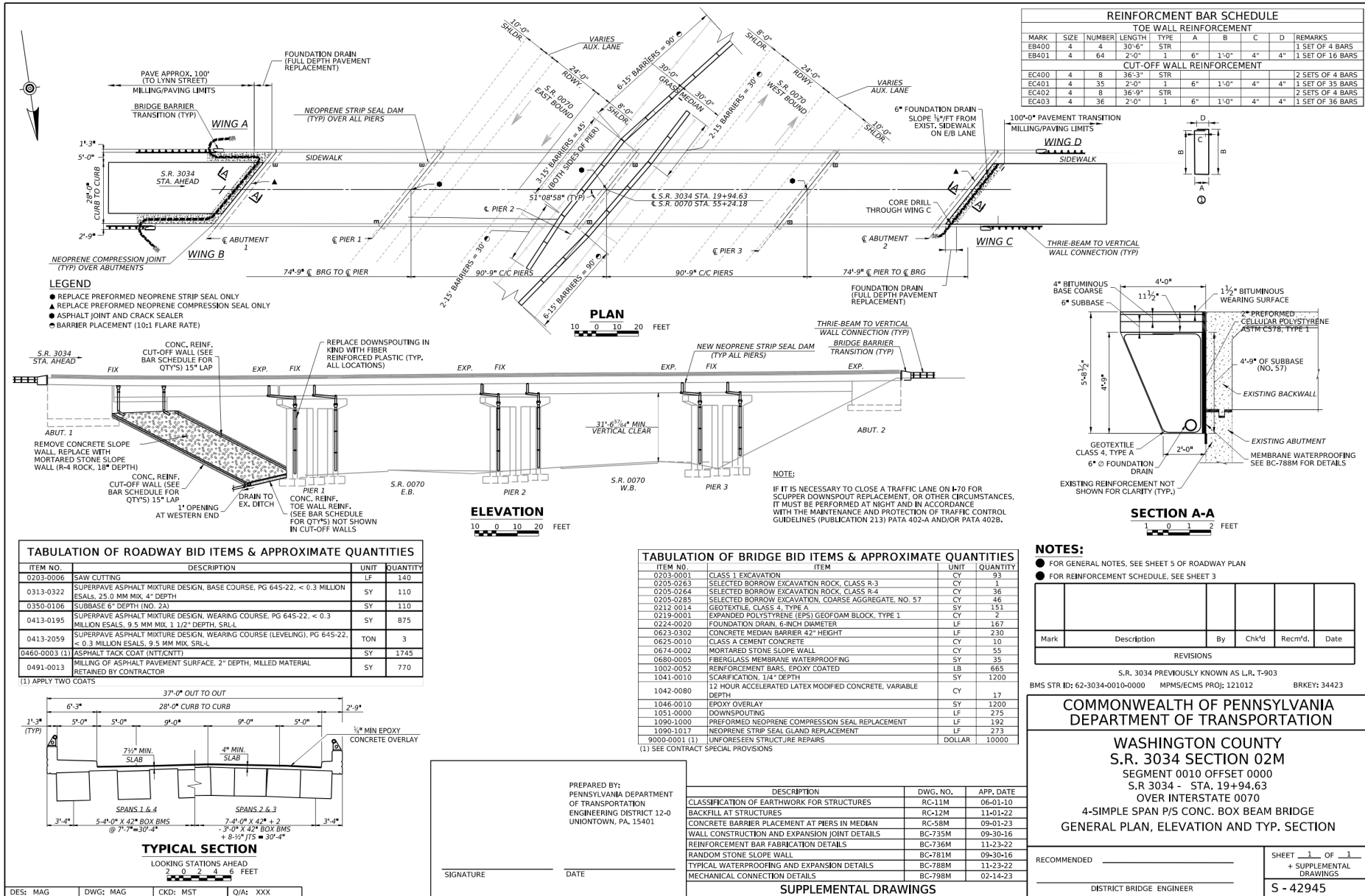
ROUTE 2056



ROUTE 2056



PRELIMINARY ROUTE 2056 PLAN



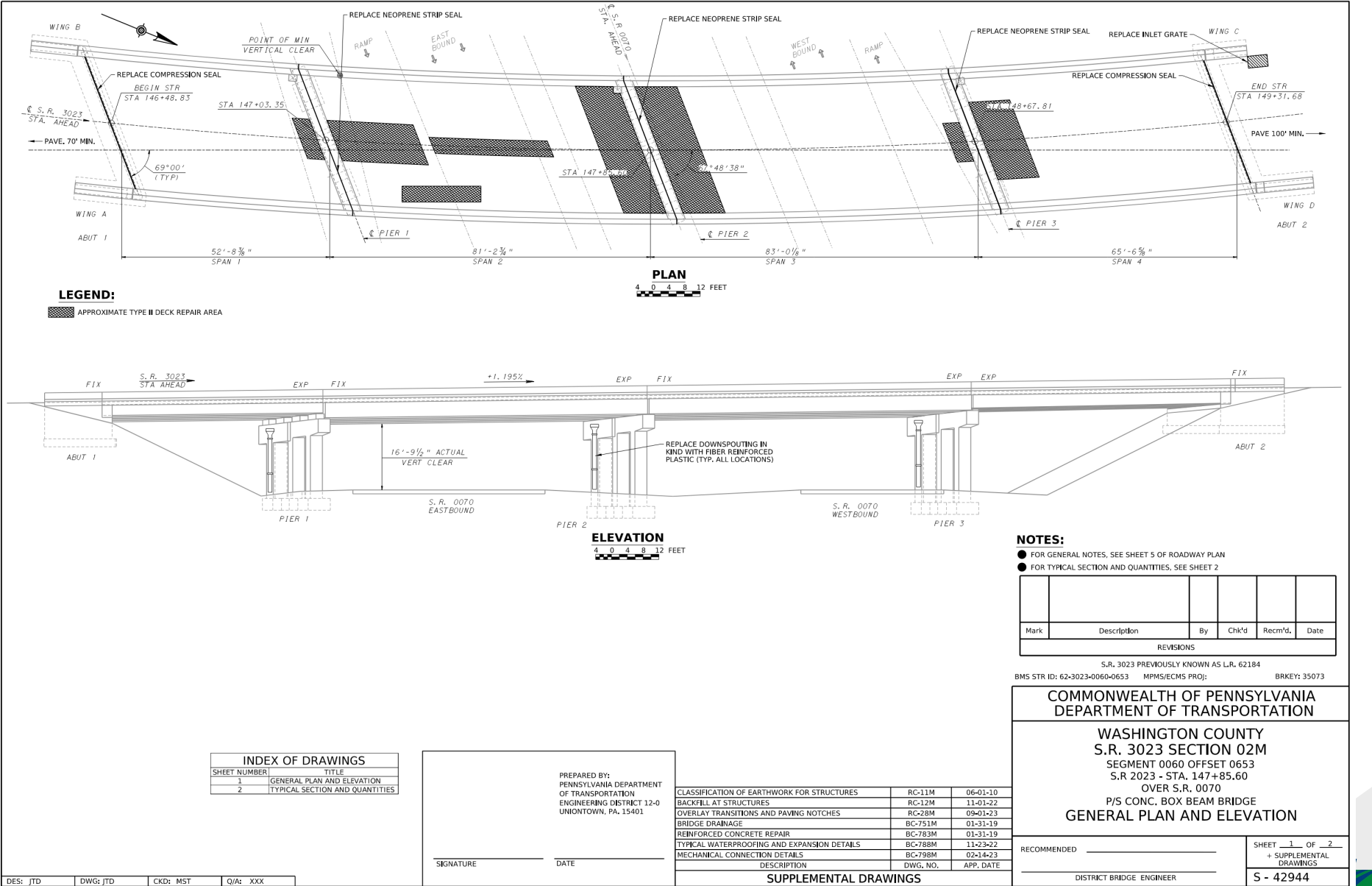
ROUTE 3023



ROUTE 3023



PRELIMINARY ROUTE 3023 PLAN



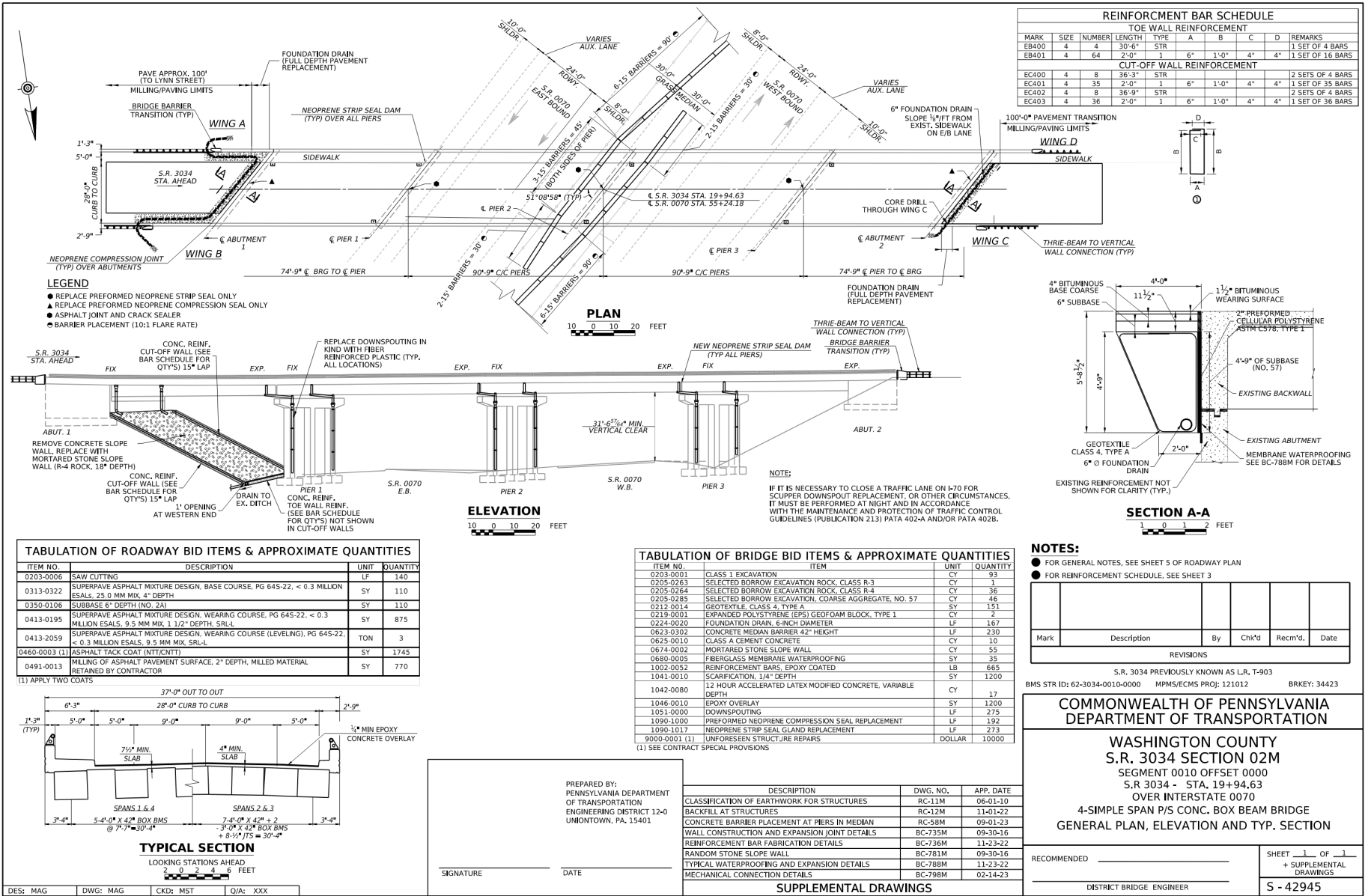
ROUTE 3034



ROUTE 3034



PRELIMINARY ROUTE 3034 PLAN



ROUTE 4069



ROUTE 4069



LEGEND:

- AREA TO BE REMOVED FOR UHPC LINK SLAB REPLACEMENT
- CLASS AA CONCRETE REPAIR
- REPLACE PREFORMED NEOPRENE COMPRESSION SEAL
- FULL DEPTH PAVEMENT REPLACEMENT
- ASPHALT JOINT AND CRACK SEALER

TABULATION OF BRIDGE BID ITEMS & APPROXIMATE QUANTITIES

ITEM NO.	ITEM	UNIT	QUANTITY
0203-0001	CLASS 1 EXCAVATION	CY	360
0205-0285	SELECTED BORROW EXCAVATION, COARSE AGGREGATE, NO. 57	CY	53
0212-0014	GEOTEXTILE, CLASS 4, TYPE A	SY	195
0219-0001	EXPANDED POLYSTYRENE (EPS) GEOFOAM BLOCK, TYPE 1	CY	2
0224-0020	FOUNDATION DRAIN, 6-INCH DIAMETER	LF	153
0469-0021	ASPHALT JOINT AND CRACK SEALING FOR CONCRETE SURFACES	LF	461
0680-0005	FIBERGLASS MEMBRANE WATERPROOFING	SY	31
1001-0970	MECHANICAL TEXTURING WITH TRANSVERSE SAWED GROOVES	SY	1035
1001-1080	CLASS AA CEMENT CONCRETE	CY	3
1002-0001	REINFORCEMENT BARS	LB	245
1039-0010	CONCRETE BRIDGE DECK SURFACE PREPARATION, HYDRODEMOLITION	SY	1035
1041-0010	SCARIFICATION, 1/4" DEPTH	SY	1035
1042-0040	12 HOUR ACCELERATED LATEX MODIFIED CONCRETE WEARING SURFACE, 1 1/4" DEPTH	SY	1035
1042-0080	12 HOUR ACCELERATED LATEX MODIFIED CONCRETE, VARIABLE DEPTH	CY	15
9000-0001 (1)	UNFORSEEN STRUCTURE REPAIRS	DOLLAR	25000
9000-0004 (1)	CLEAN AND FLUSH SCUPPER	6	6
9000-0007 (1)	TEMPORARY SHIELDING	LS	1
9000-0008 (1)	SEALING EXISTING JOINTS IN BRIDGE PARAPET	LF	70
9000-1099 (1)	UHPC LINK SLAB	LF	139

(1) SEE CONTRACT SPECIAL PROVISIONS

TABULATION OF ROADWAY BID ITEMS & APPROXIMATE QUANTITIES

ITEM NO.	DESCRIPTION	UNIT	QUANTITY
0203-0006	SAW CUTTING	LF	48
0313-0322	SUPERPAVE ASPHALT MIXTURE DESIGN, BASE COURSE, PG 64S-22, < 0.3 MILLION ESALS, 25.0 MM MIX, 4" DEPTH	SY	590
0350-0106	SUBBASE 6" DEPTH (NO. 2A)	SY	55
0413-0195	SUPERPAVE ASPHALT MIXTURE DESIGN, WEARING COURSE, PG 64S-22, < 0.3 MILLION ESALS, 9.5 MM MIX, 1 1/2" DEPTH, SRL-L	SY	590
0413-2059	SUPERPAVE ASPHALT MIXTURE DESIGN, WEARING COURSE (LEVELING), PG 64S-22, < 0.3 MILLION ESALS, 9.5 MM MIX, SRL-L	TON	2
0460-0003 (1)	ASPHALT TACK COAT (NT/CT/NT)	SY	1180
0491-0013	MILLING OF ASPHALT PAVEMENT SURFACE, 2" DEPTH, MILLED MATERIAL RETAINED BY CONTRACTOR	SY	590

(1) APPLY TWO COATS

NOTES:

- FOR GENERAL NOTES, SEE SHEET 5 OF ROADWAY PLAN
- FOR LINK SLAB DETAILS AND REBAR SCHEDULE, SEE SHEETS 2 & 3

INDEX OF DRAWINGS

SHEET NUMBER	TITLE
1	GENERAL PLAN, ELEVATION, AND TYP. SECTION
2	LINK SLAB DETAILS
3	LINK SLAB DETAILS AND REBAR SCHEDULE
4	LINK SLAB CONSTRUCTION PHASING

SUPPLEMENTAL DRAWINGS

DESCRIPTION	DWG. NO.	APP. DATE
CLASSIFICATION OF EARTHWORK FOR STRUCTURES	RC-11M	06-01-10
BACKFILL AT STRUCTURES	RC-12M	11-01-22
OVERLAY TRANSITIONS AND PAVING NOTCHES	RC-28M	09-01-23
NEOPRENE STRIP SEAL DAM FOR PRESTRESSED CONCRETE & STEEL I-BEAM BRIDGES	BC-767M	11-23-22
REINFORCED CONCRETE REPAIR	BC-783M	01-31-19
TYPICAL WATERPROOFING AND EXPANSION DETAILS	BC-788M	11-23-22
MECHANICAL CONNECTION DETAILS	BC-798M	02-14-23

**COMMONWEALTH OF PENNSYLVANIA
DEPARTMENT OF TRANSPORTATION**

**WASHINGTON COUNTY
S.R. 4069 SECTION 01R
SEGMENT 0010 OFFSET 0000
S.R. 4069 - STA. 47+37.95
OVER S.R. 22
4-SPAN PRESTRESSED I-BEAM BRIDGE
GENERAL PLAN, ELEVATION, TYP. SECTION, AND QTY'S**

RECOMMENDED _____ SHEET 1 OF 4
+ SUPPLEMENTAL DRAWINGS
DISTRICT BRIDGE ENGINEER _____ S - 42946

TABULATION OF BRIDGE BID ITEMS & APPROXIMATE QUANTITIES			
ITEM NO.	ITEM	UNIT	QUANTITY
0203-0001	CLASS 1 EXCAVATION	CY	360
0205-0285	SELECTED BORROW EXCAVATION, COARSE AGGREGATE, NO. 57	CY	53
0212-0001	GEOTEXTILE, CLASS 4, TYPE A	SY	10
0219-0001	EXPANDED POLYSTYRENE (EPS) GEOFOAM BLOCK, TYPE 1	CY	2
0224-0020	FOUNDATION DRAIN, 6-INCH DIAMETER	LF	153
040-0002	ASPHALT JOINT AND CRACK SEALING FOR CONCRETE SURFACES	SY	461
0680-0005	FIBERGLASS MEMBRANE WATERPROOFING	SY	31
1001-0970	MECHANICAL TEXTURING WITH TRANSVERSE SAWED GROOVES	SY	1035
1001-1080	CLASS AA CEMENT CONCRETE	CY	3
1002-0001	REINFORCEMENT BARS	LB	245
1039-0010	CONCRETE BRIDGE DECK SURFACE PREPARATION, HYDRODEMOLITION	SY	1035
1041-0010	SCARIFICATION, 1/4" DEPTH	SY	1035
1042-0040	12 HOUR ACCELERATED LATEX MODIFIED CONCRETE WEARING SURFACE, 1 1/4" DEPTH	SY	1035
1042-0080	12 HOUR ACCELERATED LATEX MODIFIED CONCRETE, VARIABLE DEPTH	CY	15
9000-0001 (1)	UNFORSER STRUCTURE REPAIRS	DOLLAR	25000
9000-0004 (1)	CLEAN AND FLUSH SCUPPER	EACH	6
9000-0007 (1)	TEMPORARY SHIELDING	LS	1
9000-0008 (1)	SEALING EXISTING JOINTS IN BRIDGE PARAPET	LF	7
9000-1999 (1)	UHP/LC LINK SLAB	LF	139

(1) SEE CONTRACT SPECIAL PROVISIONS

TABULATION OF ROADWAY BID ITEMS & APPROXIMATE QUANTITIES				
ITEM NO.	DESCRIPTION	UNIT	QUANTITY	
0203-0006	SAW CUTTING	LF	48	
0313-0332	SUPERPAVE ASPHALT MIXTURE DESIGN, BASE COURSE, PG 645-22, < 0.3 MILLION ESALS, 25.0 MM MAXIMUM 4" DEPTH	SY	590	
0350-0106	SUBBASE 6" DEPTH (NO. 2A)	SY	55	
0413-0195	SUPERPAVE ASPHALT MIXTURE DESIGN, WEARING COURSE, PG 645-22, < 0.3 MILLION ESALS, 9.5 MAXIMUM 1 1/2" DEPTH, SRI-L	SY	590	
0413-2059	SUPERPAVE ASPHALT MIXTURE DESIGN, WEARING COURSE (LEVELING), PG 645-22, < 0.3 MILLION ESALS, 9.5 MAXIMUM 1/2" DEPTH, SRI-L	TON	2	
0460-0003 (1)	ASPHALT TACK COAT (NT/MCTT)	SY	1180	
0491-0013	MILLING OF ASPHALT PAVEMENT SURFACE, 2" DEPTH, MILLED MATERIAL RETAINED BY CONTRACTOR	SY	590	
(1) APPLY TWO COATS.				

NOTES:

- FOR GENERAL NOTES, SEE SHEET 5 OF ROADWAY PLAN
- FOR LINK SLAB DETAILS AND REBAR SCHEDULE, SEE SHEETS 2 & 3

Mark	Description	By	Chk'd	Recm'd.	Date
REVISIONS					

S.R. 4069 PREVIOUSLY KNOWN AS L.R. 257

BMS STR ID: 62-4069-0010-0000 MPMS/ECMS PROJ: 121012 BRKEY: 34362

COMMONWEALTH OF PENNSYLVANIA
DEPARTMENT OF TRANSPORTATION

WASHINGTON COUNTY
S.R. 4069 SECTION 01R
SEGMENT 0010 OFFSET 0000
S.R. 4069 - STA. 47+37.95
OVER S.R. 22
4-SPAN PRESTRESSED I-BEAM BRIDGE
GENERAL PLAN, ELEVATION, TYP. SECTION, AND QTY'S

RECOMMENDED _____ _____ DISTRICT BRIDGE ENGINEER	SHEET <u>1</u> OF <u>4</u> + SUPPLEMENTAL DRAWINGS S - 42946
--	---

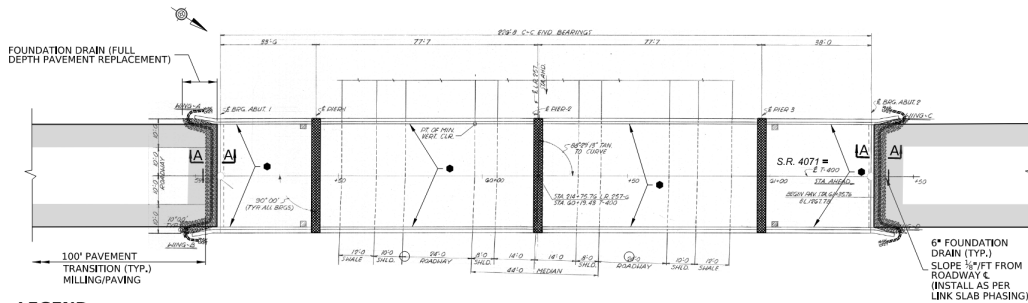
ROUTE 4071



ROUTE 4071



PRELIMINARY ROUTE 4071 PLAN

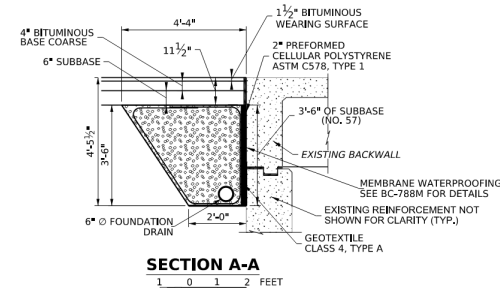
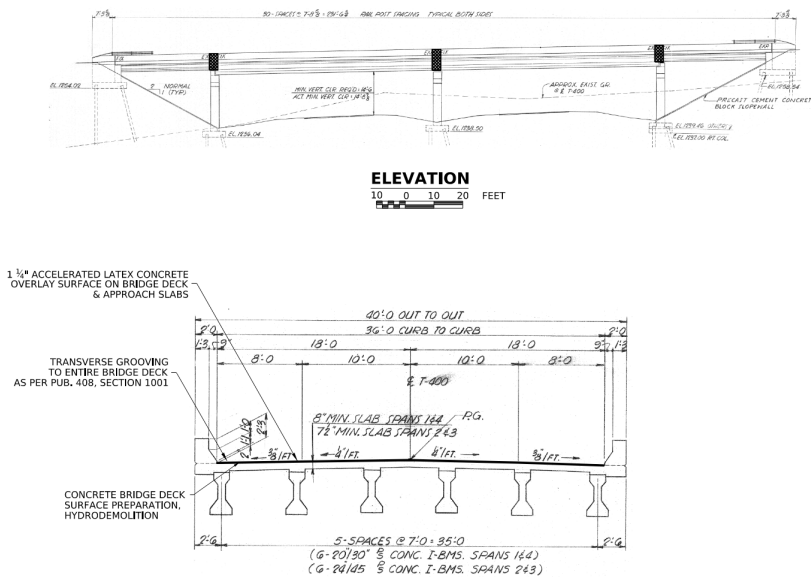


TABULATION OF BRIDGE BID ITEMS & APPROXIMATE QUANTITIES			
ITEM NO.	ITEM	UNIT	QUANTITY
0203-0001	CLASS 1 EXCAVATION	CY	95
0205-0285	SELECTED BORROW EXCAVATION, COARSE AGGREGATE, NO. 57	CY	53
0212-0014	GEOTEXTILE, CLASS 4, TYPE A	SY	195
0219-0001	EXPANDED POLYSTYRENE (EPS) GEOFOAM BLOCK, TYPE 1	CY	2
0224-0020	FOUNDATION DRAIN, 6-INCH DIAMETER	LF	130
0469-0021	ASPHALT JOINT AND CRACK SEALING FOR CONCRETE SURFACES	LF	60
0680-0005	FIBERGLASS MEMBRANE WATERPROOFING	SY	27
1001-0970	MECHANICAL TEXTURING WITH TRANSVERSE SAWS GROOVES	SY	907
1039-0010	CONCRETE BRIDGE DECK SURFACE PREPARATION, HYDRODEMOLITION	SY	907
1041-0010	SCARIFICATION, 1/4" DEPTH	SY	907
1042-0080	12 HOUR ACCELERATED LATEX MODIFIED CONCRETE, VARIABLE DEPTH	CY	15
1046-0010	12 HOUR ACCELERATED LATEX MODIFIED CONCRETE WEARING SURFACE, 1 1/4" DEPTH	SY	907
1051-0000	12 HOUR ACCELERATED LATEX MODIFIED CONCRETE, VARIABLE DEPTH	CY	15
9000-0001 (1)	UNFORSEEN STRUCTURE REPAIRS	DOLLAR	25000
9000-0007 (1)	TEMPORARY SHIELDING	LS	1
9000-0008 (1)	SEALING EXISTING JOINTS IN BRIDGE PARAPET	LF	455
9000-1099 (1)	UHPC LINK SLAB	LF	121

(1) SEE CONTRACT SPECIAL PROVISIONS

TABULATION OF ROADWAY BID ITEMS & APPROXIMATE QUANTITIES			
ITEM NO.	DESCRIPTION	UNIT	QUANTITY
0203-0006	SAW CUTTING	LF	80
0313-0322	SUPERPAVE ASPHALT MIXTURE DESIGN, BASE COURSE, PG 64S-22, < 0.3 MILLION ESALS, 25.0 MM MIX, 4" DEPTH	SY	380
0350-0106	SUBBASE 6" DEPTH (NO. 2A)	SY	380
0413-0195	SUPERPAVE ASPHALT MIXTURE DESIGN, WEARING COURSE, PG 64S-22, < 0.3 MILLION ESALS, 9.5 MM MIX, 1 1/2" DEPTH, S.R.L.	SY	685
0413-2059	SUPERPAVE ASPHALT MIXTURE DESIGN, WEARING COURSE (LEVELING), PG 64S-22, < 0.3 MILLION ESALS, 9.5 MM MIX, S.R.L.	TON	2
0460-0003 (1)	ASPHALT TACK COAT (NTT/CNTT)	SY	1370
0491-0013	MILLING OF ASPHALT PAVEMENT SURFACE, 2" DEPTH, MILLED MATERIAL RETAINED BY CONTRACTOR	SY	445

(1) APPLY TWO COATS



INDEX OF DRAWINGS	
SHEET NUMBER	TITLE
1	GENERAL PLAN, ELEVATION, AND TYP. SECTION
2	LINK SLAB DETAILS
3	LINK SLAB DETAILS AND REBAR SCHEDULE
4	LINK SLAB CONSTRUCTION PHASING

DESCRIPTION	DWG. NO.	APP. DATE
CLASSIFICATION OF EARTHWORK FOR STRUCTURES	RC-11M	06-01-10
BACKFILL AT STRUCTURES	RC-12M	11-01-22
OVERLAY TRANSITIONS AND PAVING NOTCHES	RC-28M	09-01-23
NEOPRENE STRIP SEAL DAM FOR PRESTRESSED CONCRETE & STEEL I-BEAM BRIDGES	BC-767M	11-23-22
REINFORCED CONCRETE REPAIR	BC-783M	01-31-19
TYPICAL WATERPROOFING AND EXPANSION DETAILS	BC-788M	11-23-22
MECHANICAL CONNECTION DETAILS	BC-798M	02-14-23

SUPPLEMENTAL DRAWINGS

- NOTES:
- FOR GENERAL NOTES, SEE SHEET 5 OF ROADWAY PLAN
 - FOR LINK SLAB DETAILS AND REBAR SCHEDULE, SEE SHEET 3
 - FOR LINK SLAB CONSTRUCTION PHASING, SEE SHEET 4

Mark	Description	By	Chk'd	Recm'd.	Date
REVISIONS					

S.R. 4069 PREVIOUSLY KNOWN AS L.R. 257
BMS STR ID: 624-0701-0010-0000 MPMS/ECMS PROJ: 121012 BRKEY: 34365

COMMONWEALTH OF PENNSYLVANIA DEPARTMENT OF TRANSPORTATION

WASHINGTON COUNTY
S.R. 4071 SECTION 01M
SEGMENT 0010 OFFSET 0000
S.R. 4071 - STA. 214+75.76
OVER S.R. 22

4-SPAN PRESTRESSED I-BEAM BRIDGE GENERAL PLAN, ELEVATION, AND TYPICAL SECTION

RECOMMENDED	SHEET 1 OF 4 + SUPPLEMENTAL DRAWINGS
DISTRICT BRIDGE ENGINEER	S - 42947

DES: MAG DWG: MAG CKD: MST Q/A: XXX

SIGNATURE

DATE

PREPARED BY:
PENNSYLVANIA DEPARTMENT
OF TRANSPORTATION
ENGINEERING DISTRICT 12-0
UNIONTOWN, PA. 15401

CONTACT INFORMATION

Project Manager

Michael S. Temoshenka

724-439-7432

mtemoshenk@pa.gov

Press Officer

Laina Aquiline

724-415-3748

laquiline@pa.gov

