

**ROUTE 2001, SECTION F10  
ROUTE 18, SECTION S10  
ROUTE 2001 AND ROUTE 18 OVER CATFISH CREEK  
BRIDGE REPLACEMENT  
CITY OF WASHINGTON, WASHINGTON COUNTY**



# PROJECT INTRODUCTION

- The purpose of this presentation is to familiarize the public to the project, gather feedback, and present the impacts that are anticipated during construction.
- The purpose of this project is to address deficiencies, provide a reliable and efficient crossing for current and projected traffic, and maintain community and regional connectivity.



# PROJECT TEAM

- Design Team

Direct questions to:

Derek Ranella P.E. – Project Manager  
PennDOT Engineering District 12-0

724-430-4423

[dranella@pa.gov](mailto:dranella@pa.gov)

Dean Morrison P.E. – Project Manager  
Alfred Benesch and Company

724-741-4461

[dmorrison@benesch.com](mailto:dmorrison@benesch.com)

For Media Inquiries:

Laina Aquiline – Press Officer

PennDOT Engineering District 12-0

724-415-3748

[laquiline@pa.gov](mailto:laquiline@pa.gov)



# LOCATION MAP



Project Site  
Route 2001 and Route 18  
over Catfish Creek

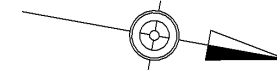
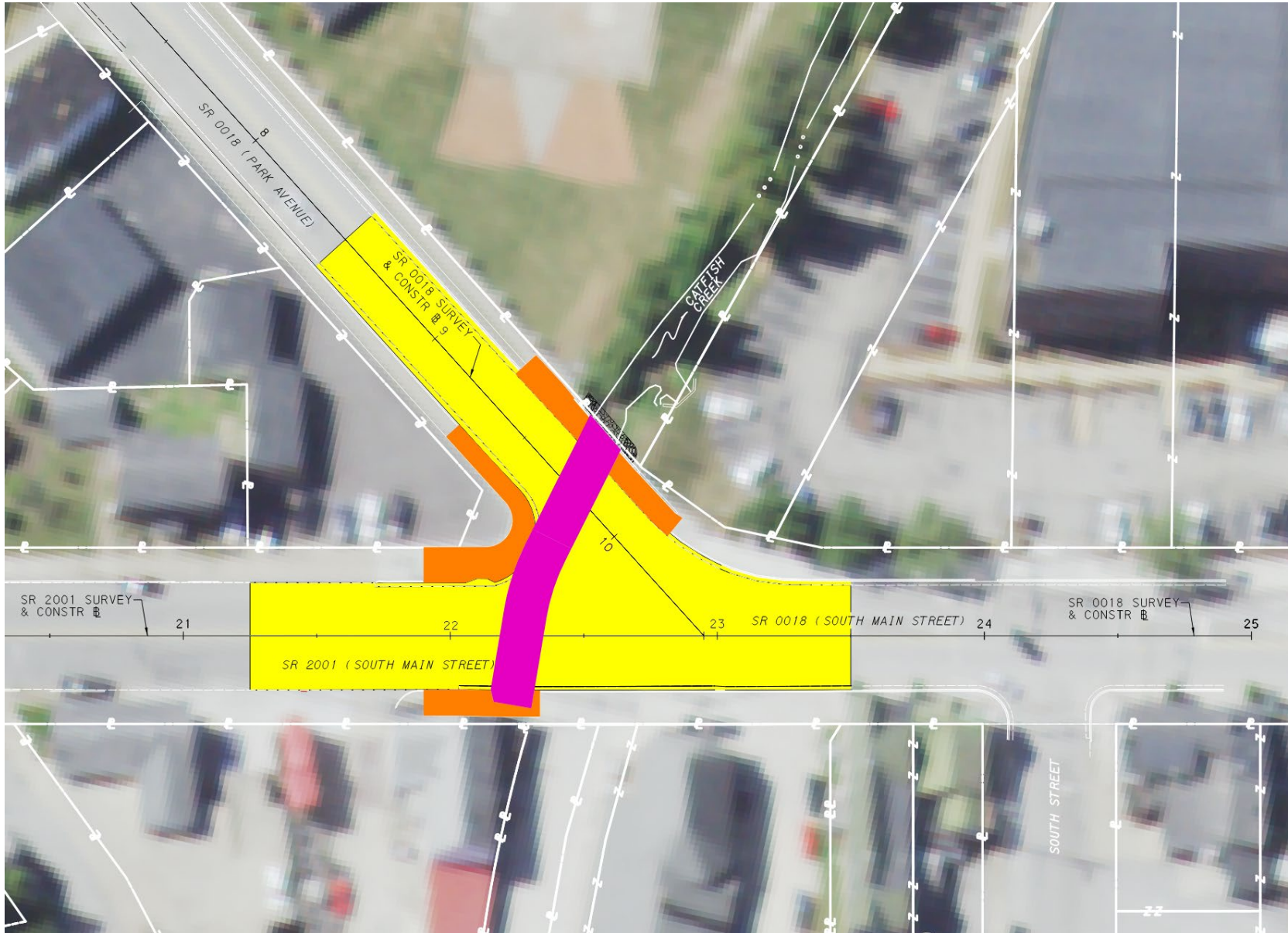


# PROJECT IMPROVEMENTS




- Remove the existing single-span concrete slab bridge on concrete abutments that was built in 1928. The existing bridge is located at the “Y” intersection of Route 2001 and Route 18.
- Construct a new reinforced concrete box culvert under Route 18 and Route 2001.
- Perform full depth pavement reconstruction approaching the new structure on Route 2001 and Route 18.
- Milling and asphalt overlay operations for transitioning into the existing Route 2001 and Route 18 roadway pavements.
- Select sidewalk and curb gutter replacements within the full depth pavement reconstruction limits.
- Signing, pavement marking, and ADA ramp improvements.



# PLAN VIEW



## Legend

-  Proposed Structure
-  Proposed Pavement
-  Proposed Sidewalks



# ENVIRONMENTAL FEATURES

- Catfish Creek is not classified as a Wild or Stocked Trout Stream so no in-stream restrictions are anticipated.
- Catfish Creek is classified as a Warm Water Fishes (WWF)
- There are no groundwater resources within the project area.
- There are no wetlands within the project area.
- There are no Threatened or Endangered species of concern within the project area.
- There is a potential of an underground storage tank from a previous fueling station land use. Should a tank be encountered, it will be removed in accordance with applicable local, state, and federal regulations.
- Potentially contaminated soils and water associated with an underground storage tank will be managed in accordance with PADEP regulations.



# PROJECT IMPACTS

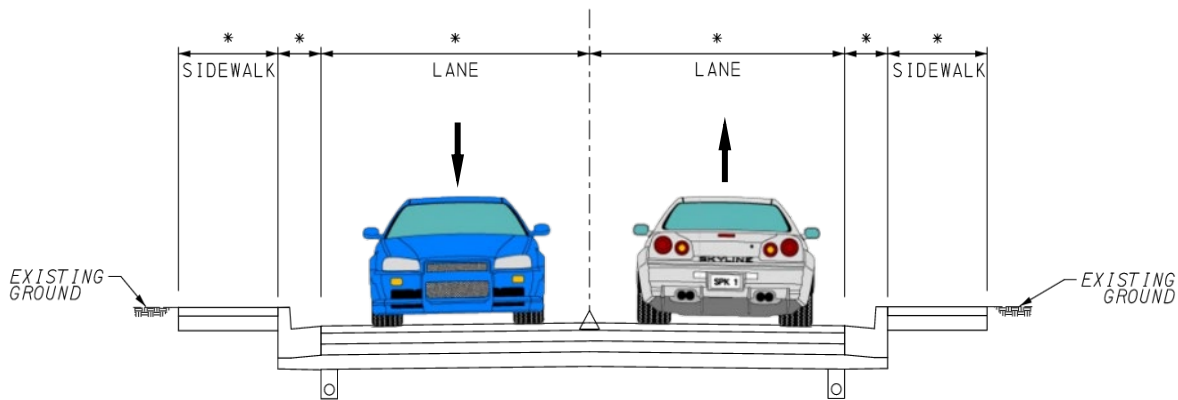
- Relocation of overhead and underground utility facilities will be required necessitating short-term lane closures prior to project construction.
- Route 18 traffic is anticipated to be detoured for approximately three (3) weeks during construction.
- Route 2001 is anticipated to be detoured for approximately twenty (20) weeks during construction.
- At least one access point/driveway will be maintained during construction. Short-term closures (<3 hours) may be required for driveways within the project limits to accommodate paving operations. These closures will be coordinated with the local businesses and attempts will be made to complete this work outside normal hours of operation.
- Pedestrian access will be maintained throughout construction.





# TYPICAL SECTION

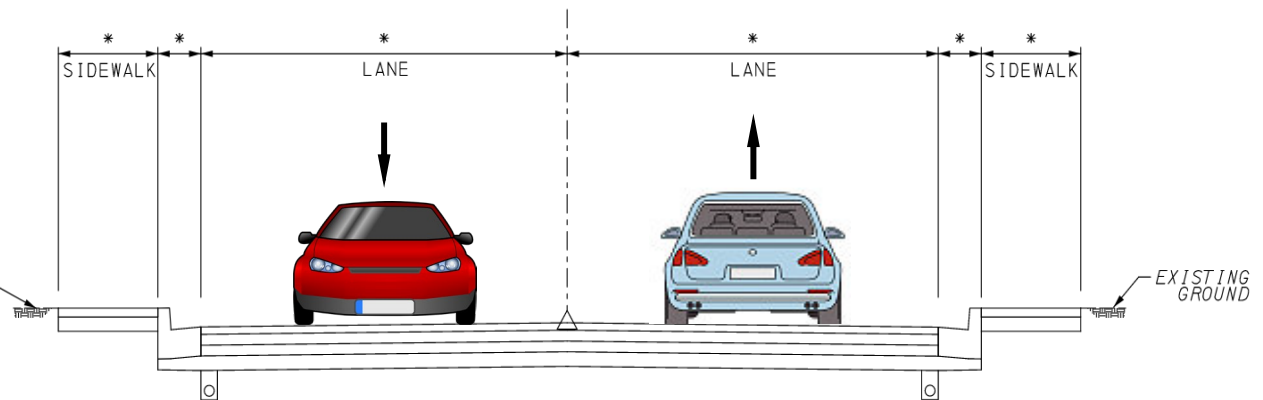
SR 0018 SURVEY & CONSTR



SR 0018 TYPICAL SECTION

NOT TO SCALE

SR 2001 SURVEY & CONSTR



SR 2001 TYPICAL SECTION

NOT TO SCALE

\* Lane and sidewalk widths will be restored to existing dimension.



# PROJECT TRAFFIC CONTROL

- The traffic control scheme will utilize detours to facilitate phased construction of the new culvert.

## Phase 1

- Route 18 is anticipated to be detoured for approximately three (3) weeks during construction.
  - The proposed detour will utilize Route 3013 (Franklin Farms Road) and Route 40 (West Chestnut Street)
  - The proposed length of the detour is approximately 3.0 miles

## Phase 2

- Route 2001 is anticipated to be detoured for approximately twenty (20) weeks during construction.
  - The proposed detour will utilize Route 19 (East Maiden Street)
  - The proposed length of the detour is approximately 10.50 miles
- Intermittent single lane closures via short-term flagging operations may also be required for construction activities throughout the overall duration of the project.



# DETOUR MAP (ROUTE 18)



Detour Route - - - -

Detour Length 3.0 Miles

Duration ~ 3 Weeks

Project Site



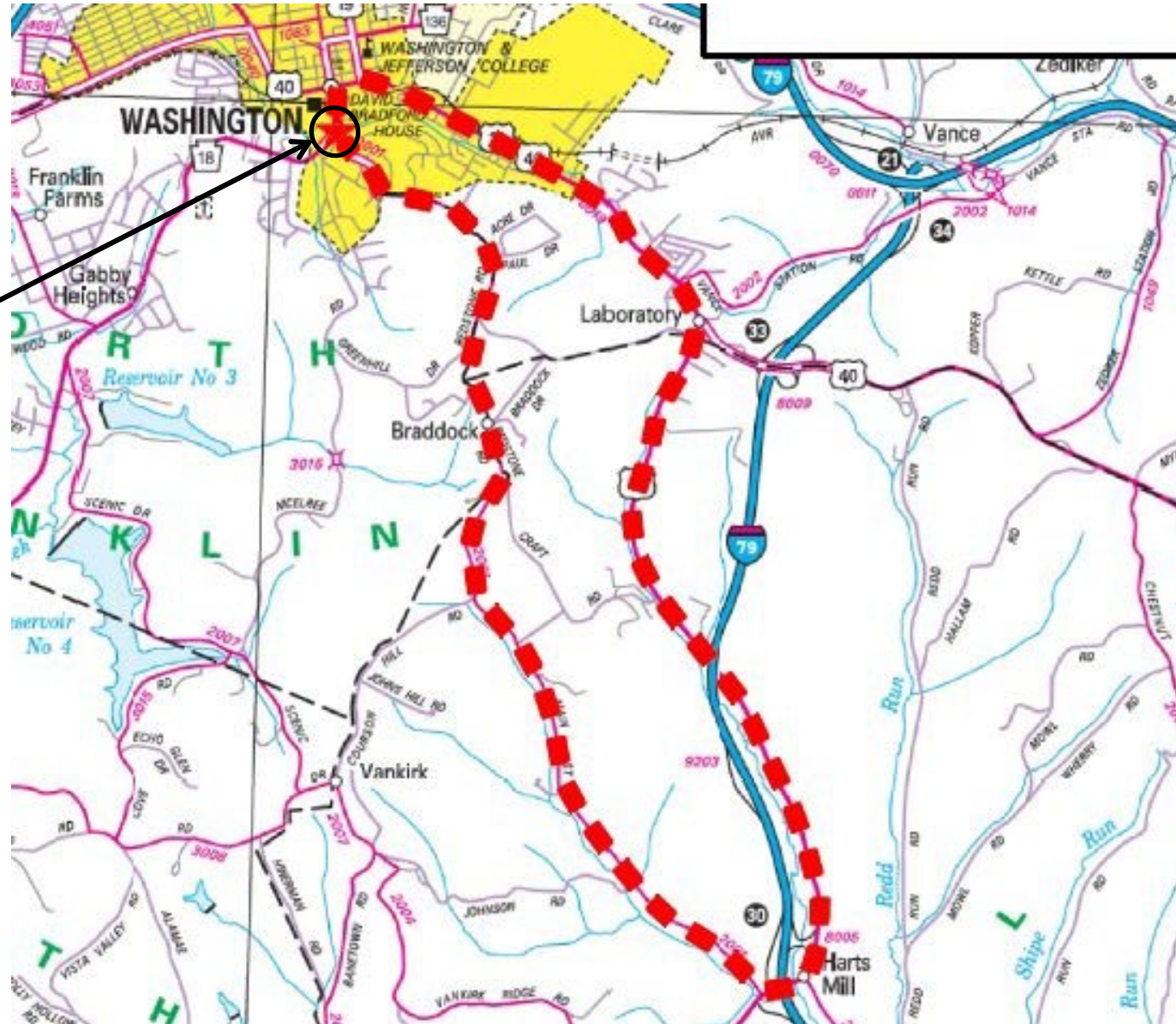
# DETOUR MAP (ROUTE 2001)

Project Site

Detour Route 

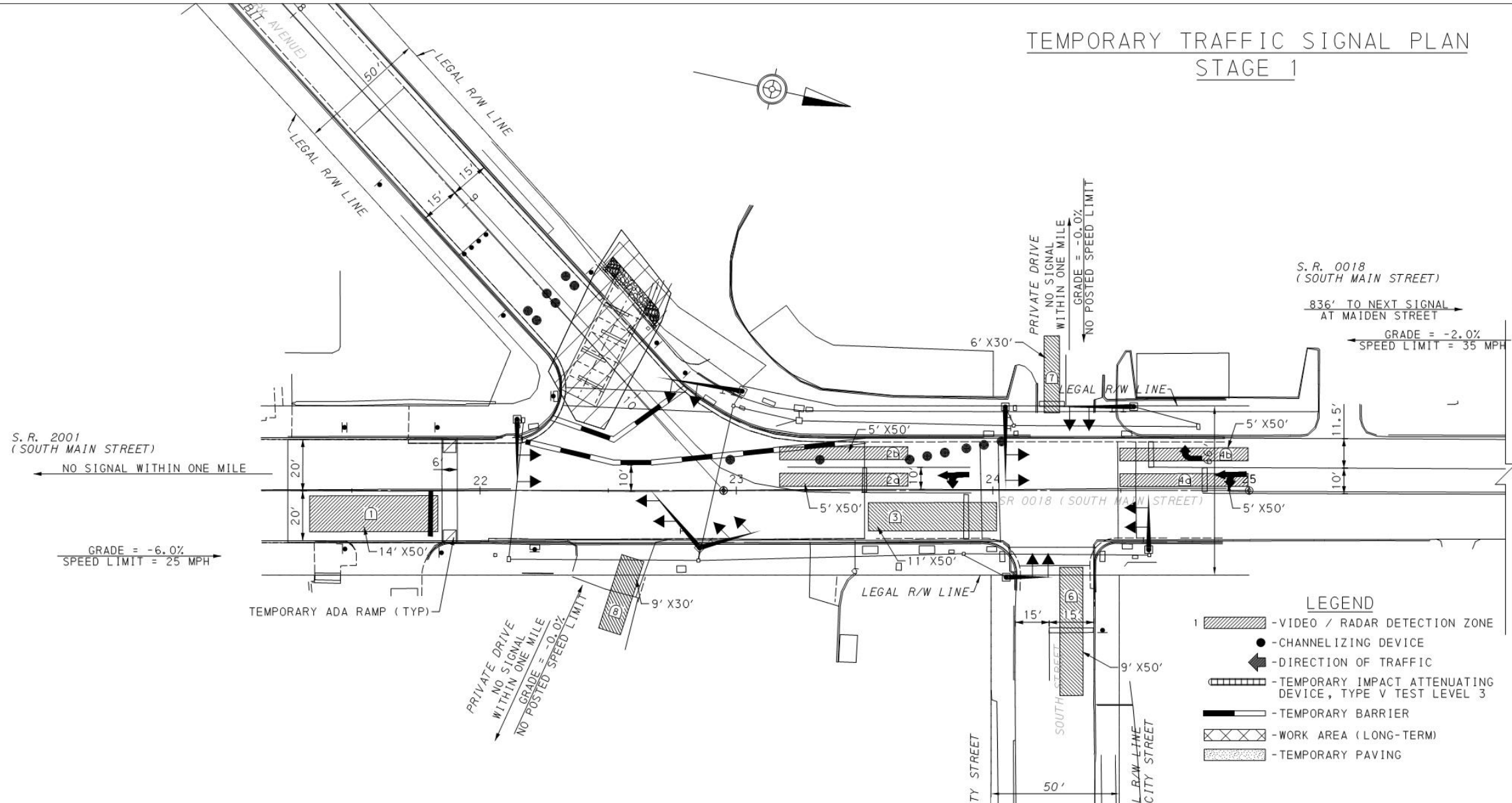
Detour Length 10.5 Miles

Duration ~ 20 Weeks



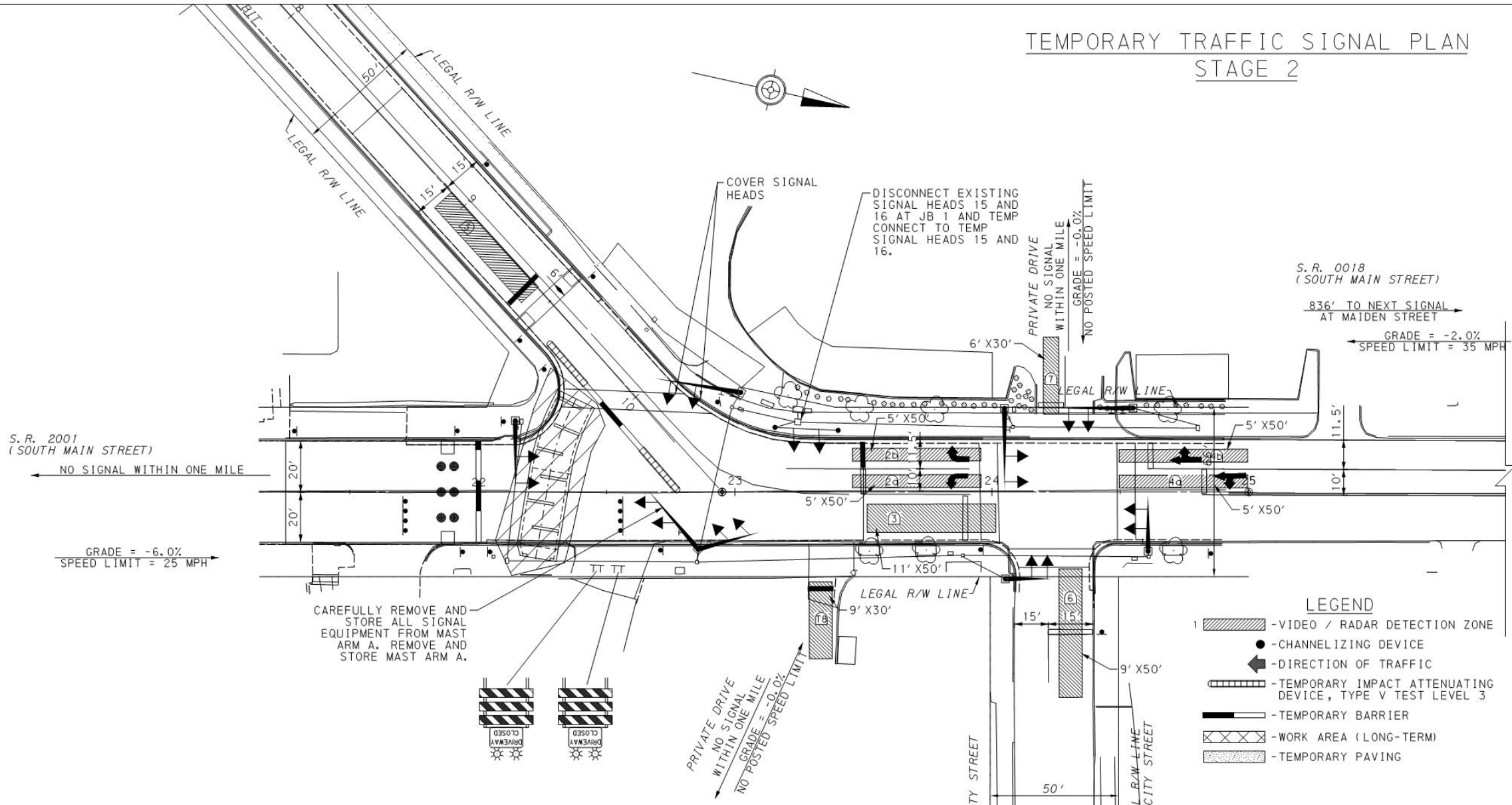
# TEMPORARY SIGNAL – STAGE 1

## TEMPORARY TRAFFIC SIGNAL PLAN STAGE 1



# TEMPORARY SIGNAL – STAGE 2

## TEMPORARY TRAFFIC SIGNAL PLAN STAGE 2



# TENTATIVE SCHEDULE

## Key Project Dates

Let Date: July 2025

Begin Construction: Spring 2026

End Construction: Fall 2026



# FOLLOW PENNDOT



[www.PennDOT.pa.gov](http://www.PennDOT.pa.gov)



[www.DMV.pa.gov](http://www.DMV.pa.gov)



[PennsylvaniaDepartmentofTransportation](#)



[PennDOTNews](#)



[PennsylvaniaDOT](#)



[PennDOTSec](#)



[/company/PennDOT](#)



[PennDOTSec](#)



[PennsylvaniaDOT](#)