

STATE ROUTE 4019(LEGER ROAD), SECTION C10 STRUCTURE PLACEMENT OVER BRUSH CREEK NORTH HUNTINGDON, WESTMORELAND COUNTY



DISTRICT 12-0 AND MACKIN ENGINEERING COMPANY

PROJECT INTRODUCTION

The purpose of this presentation:

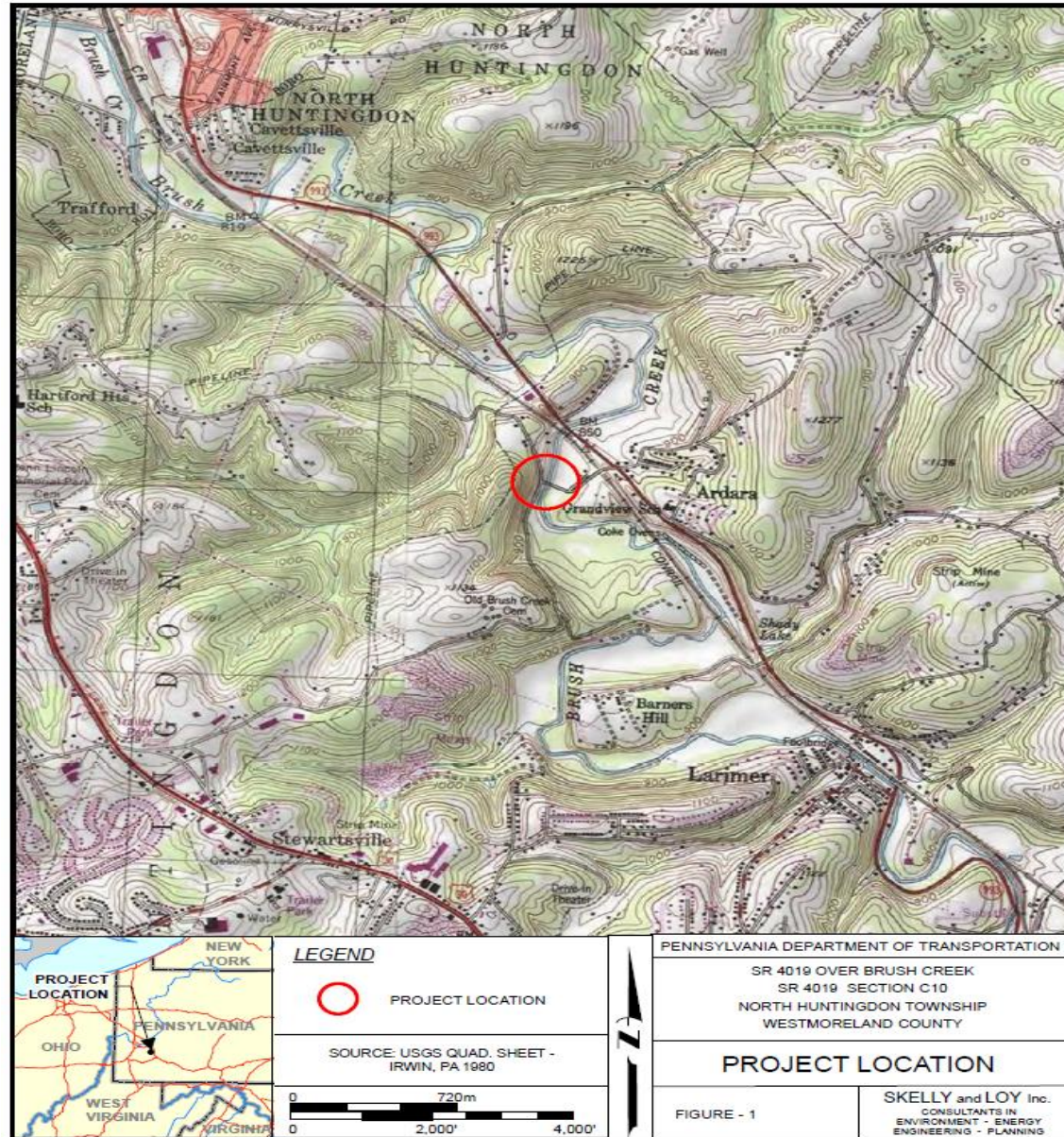
- Introduce the project
- Present anticipated impacts
- Gather feedback

The project purpose and need:

- The purpose of this project is to address deficiencies to provide a reliable and efficient crossing over Brush Creek to service current and projected vehicular traffic, and to maintain community and regional connectivity. The needs are to address safety and facility deficiencies with this project.



PROJECT LOCATION MAP



PROJECT IMPROVEMENTS

Improvements to horizontal and vertical roadway geometry

Widened roadway and structure

SR 4019 pavement reconstruction

Drainage improvements

Updated signing

New guiderail and guiderail end treatments



HISTORIC BRIDGE INFORMATION

- The existing bridge (Bridge Key 36696) was constructed in 1909 and is individually eligible for the National Register of Historic Places (NRHP), making it a Section 4(f) resource.
- The bridge is considered one of the earliest examples of concrete arch bridge technology in the region.
- Character-defining features include the arch ring and barrel, spandrel walls, recessed paneled parapets, and substructure, all of which are composed of reinforced concrete.
- Historic Bridge Rehabilitation Analysis (HBRA) was completed for the project and the bridge cannot be rehabilitated to meet the Secretary of the Interior's Standards for Rehabilitation.

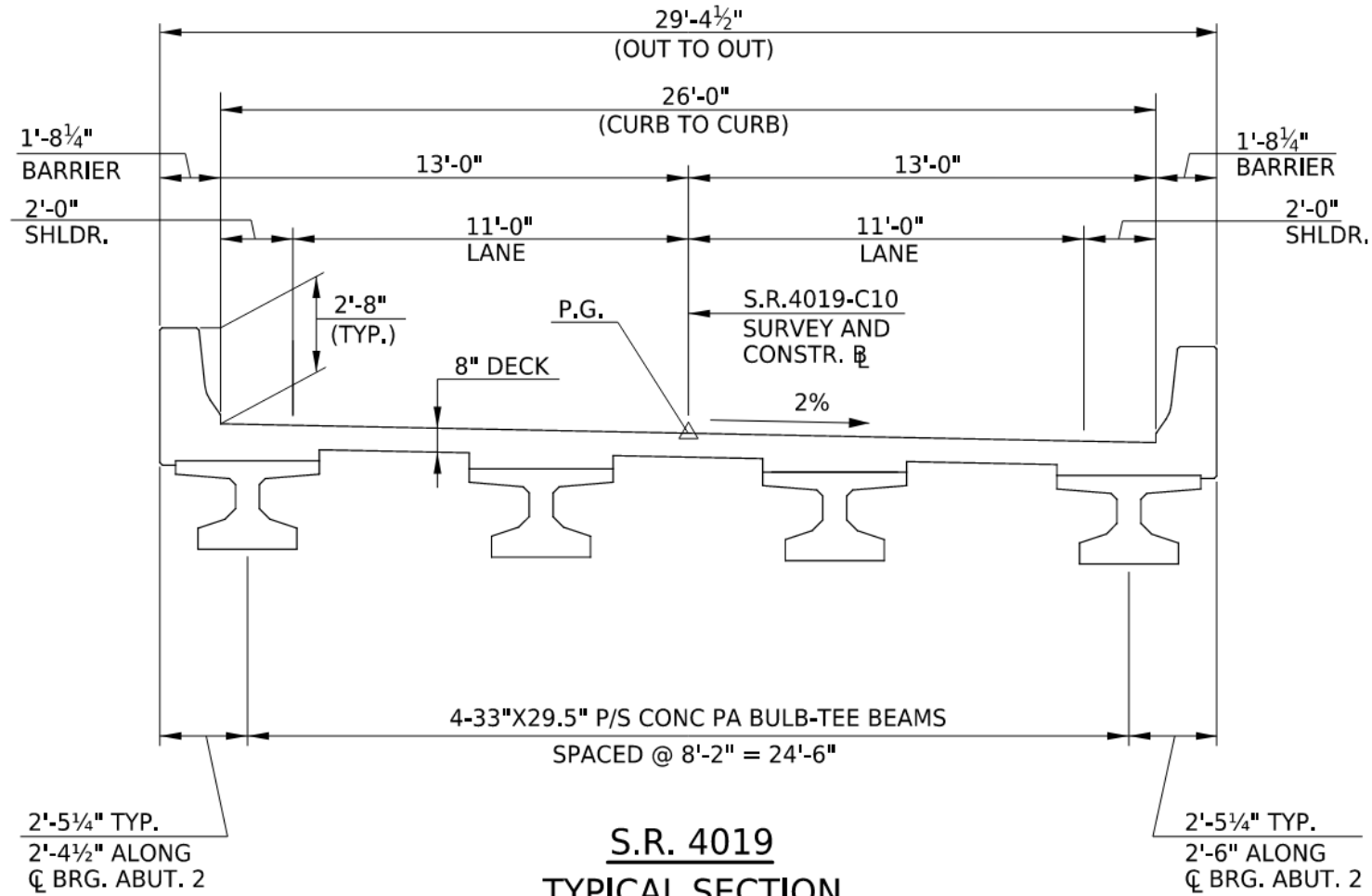


HISTORIC BRIDGE INFORMATION

- As mitigation, PennDOT is planning a comprehensive historic bridge website to be housed within the PennDOT Cultural Resources program website. The website is envisioned to consist of:
 - A GIS based story map that will have all extant historic bridges keyed to a map with a photograph and summary data on the significance of each bridge.
 - Information on the major bridge building types and designs including methodologies for evaluating them for NRHP eligibility.
 - Overview information on the major bridge building companies of PA in the 19th and 20th centuries and some of their most notable works.
 - Information on historic bridge inventories and evaluations.
 - A story map on historic bridges PennDOT is currently marketing for adaptive use.
 - Success stories on successful rehabilitations and adaptive use stories.



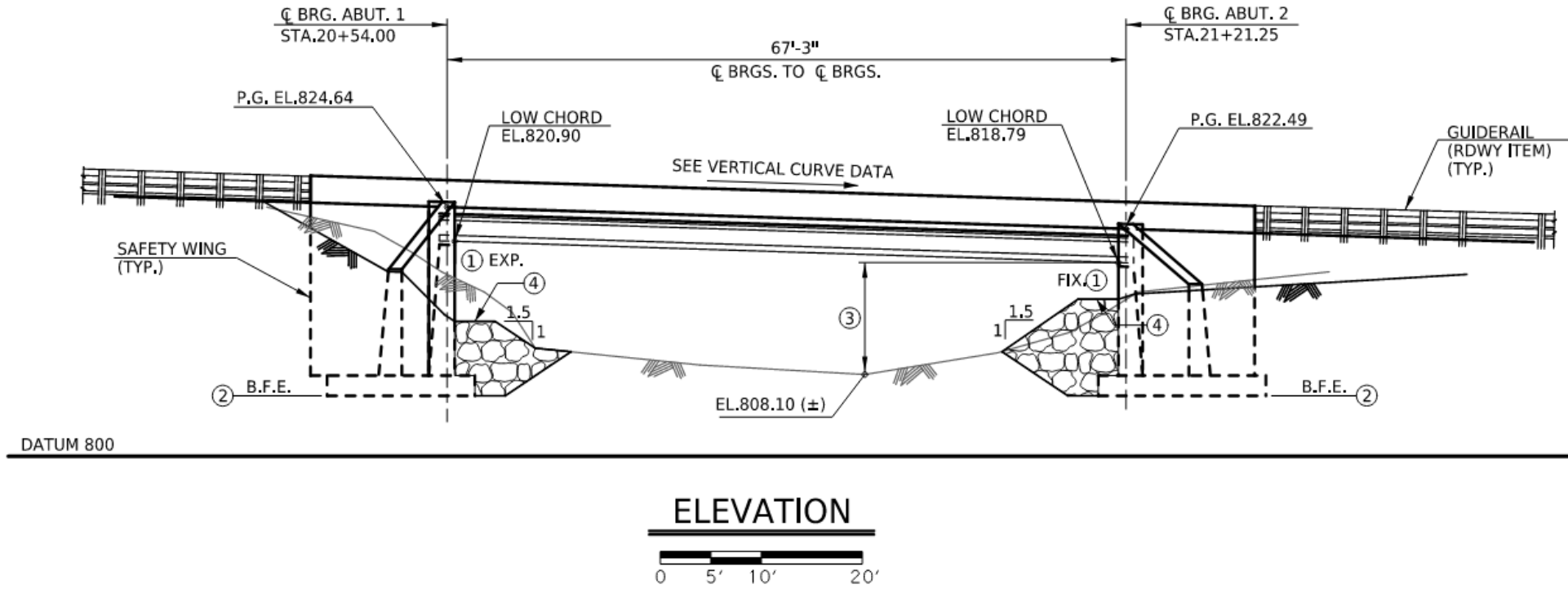
TYPICAL SECTION AT STRUCTURE



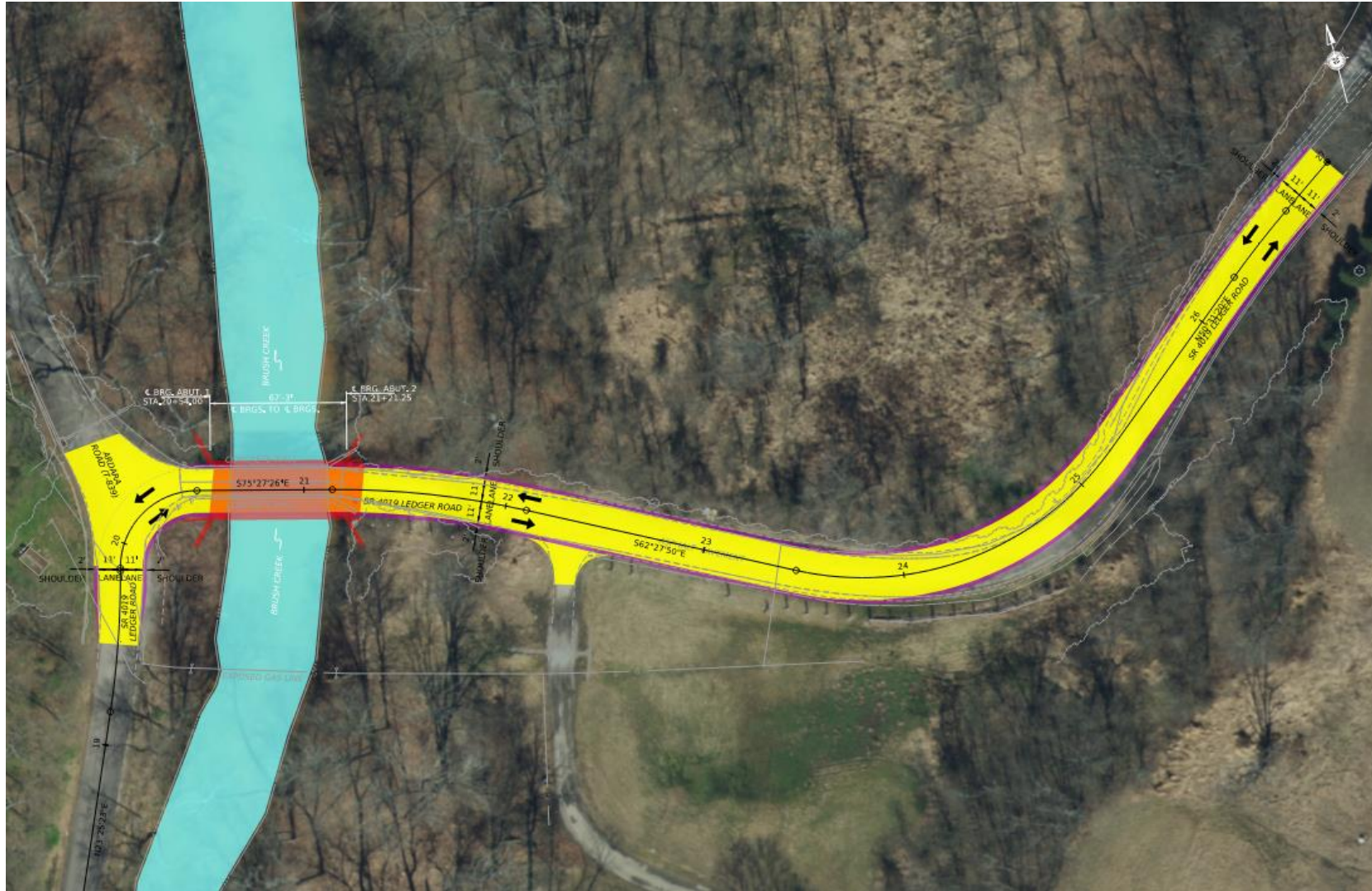
S.R. 4019
TYPICAL SECTION
STA 20+54.00 TO STA 21+21.25



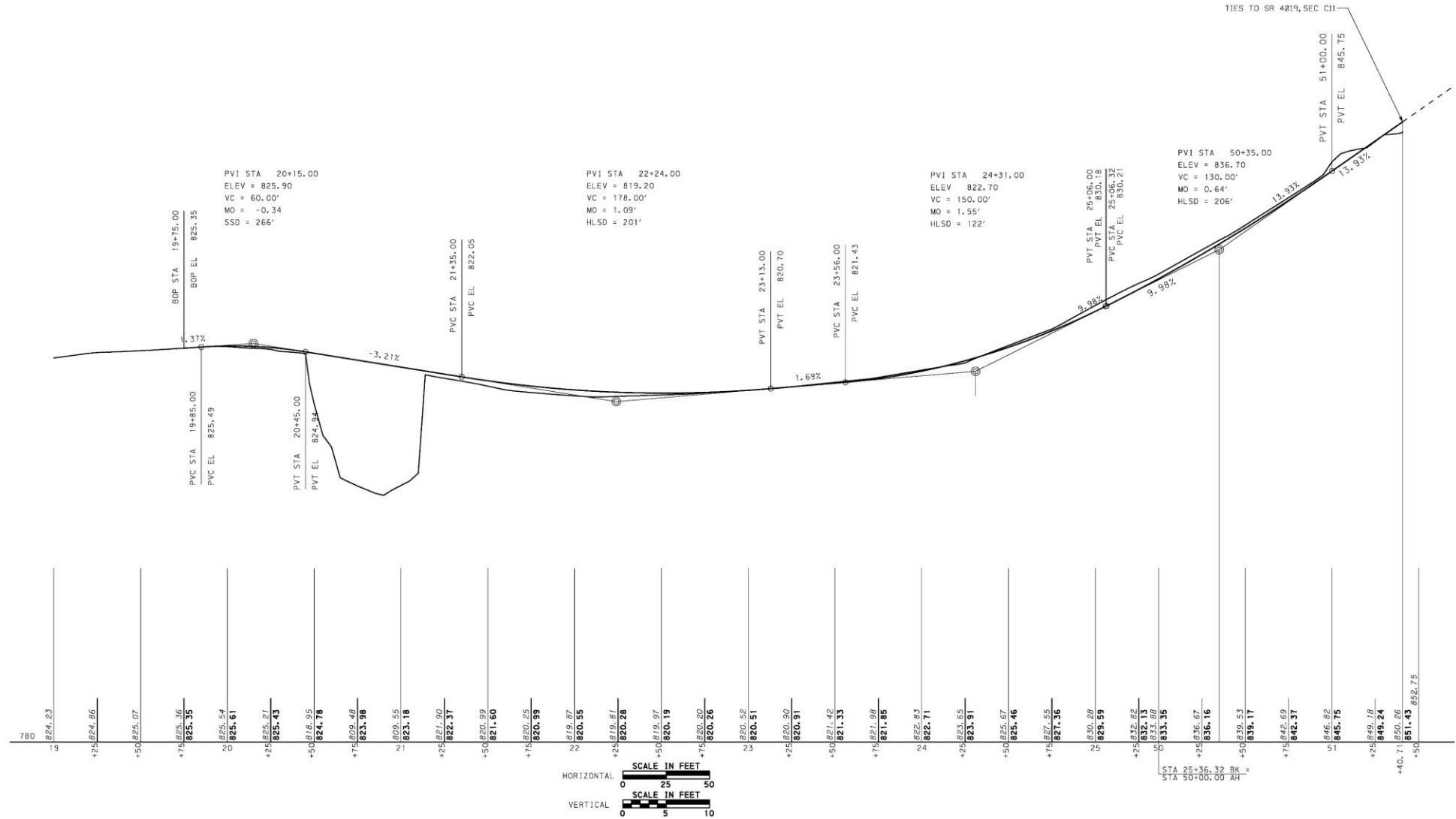
ELEVATION VIEW AT STRUCTURE



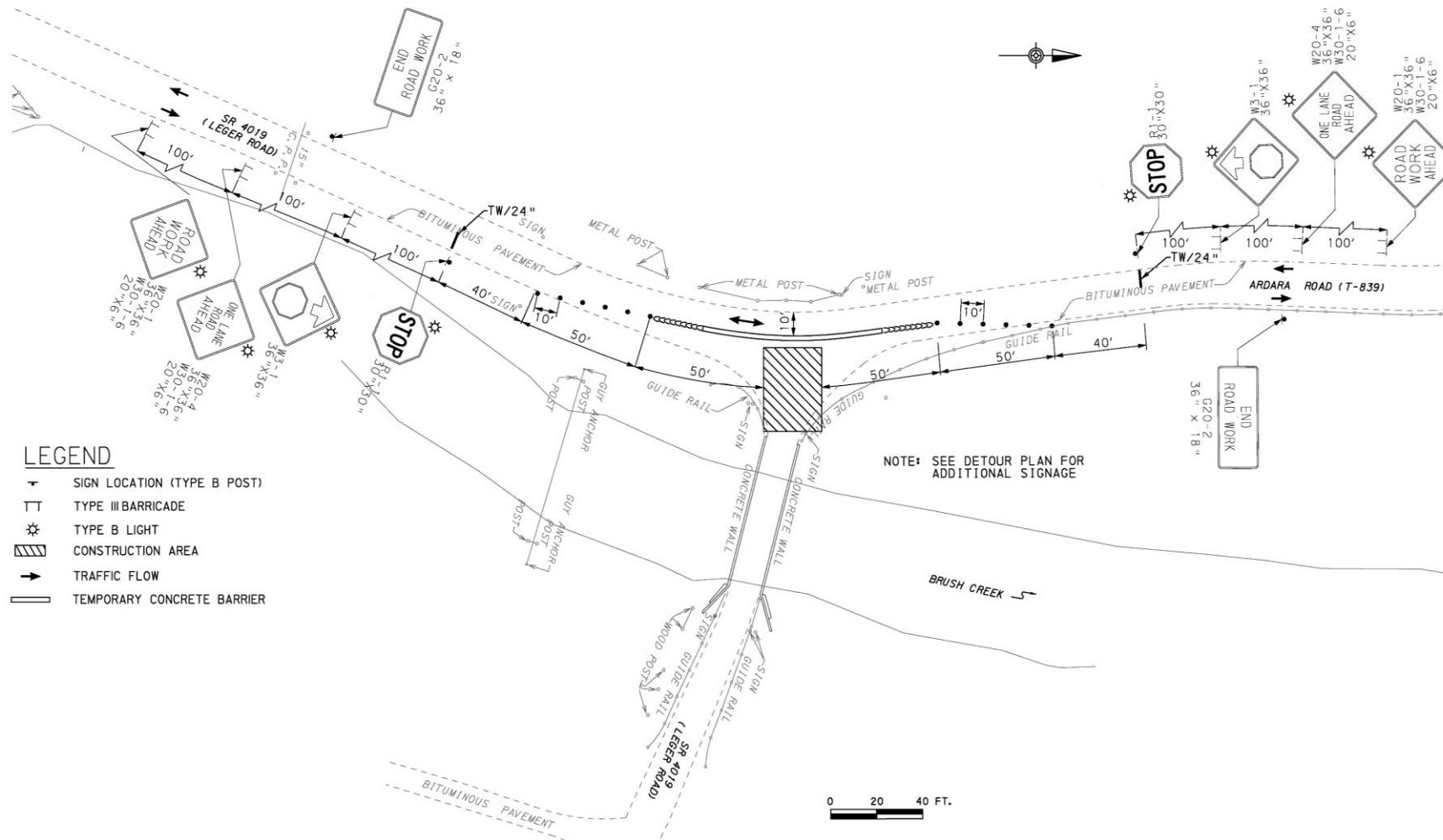
PLAN VIEW



PROFILE VIEW



SINGLE LANE CLOSURE



EMERGENCY RESPONSE

EMS Coordination

Emergency response for police, fire, and ambulance will be coordinated from each side of the construction site.



PROJECT SCHEDULE

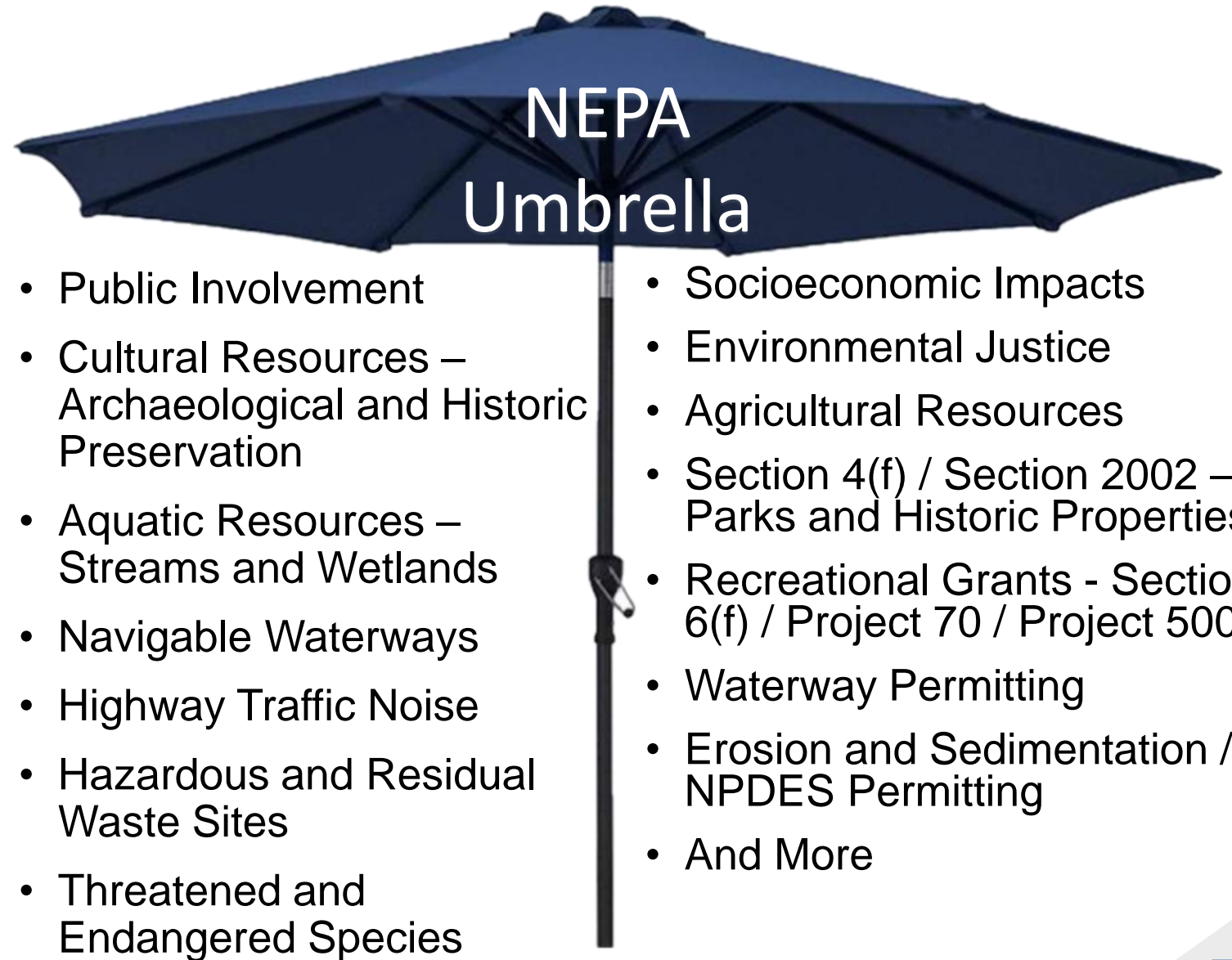
- Preliminary Engineering: Winter 2024/2025
- Final Design: Winter 2024/2025 to Winter 2025/2026
- Utility Coordination: Winter 2024/2025 to Winter 2025/2026
- Right-of-Way Acquisition: Winter 2024/2025 to Winter 2025/2026
- Construction: Spring 2026 to Fall 2026



NATIONAL ENVIRONMENTAL POLICY ACT

Public outreach begins with PennDOT Connects and extends into the **NEPA** (National Environmental Policy Act) process:

- PennDOT Connects is a project planning and development approach that engages local and planning partners by collaborating with stakeholders before project scopes are developed.
- NEPA requires agencies to integrate environmental values into their decision-making processes by considering the environmental impacts of their proposed actions and reasonable alternatives to those actions
- NEPA also includes public involvement activities and gathering feedback from the public
- This PowerPoint presentation is part of District 12-0's coordination with the public to obtain feedback on the project and to meet NEPA requirements.



CONTACT INFORMATION

PennDOT Engineering District 12-0
Attention: James D. Sisul, Project Manager

825 N. Gallatin Ave. Ext.

Uniontown, PA 15401-2105

Phone: 724-439-7379

Email: jsisul@pa.gov



FOLLOW PENNDOT



www.PennDOT.pa.gov



www.DMV.pa.gov



[PennsylvaniaDepartmentofTransportation](#)



[PennDOTNews](#)



[PennsylvaniaDOT](#)



[PennDOTSec](#)



[/company/PennDOT](#)



[PennDOTSec](#)



[PennsylvaniaDOT](#)