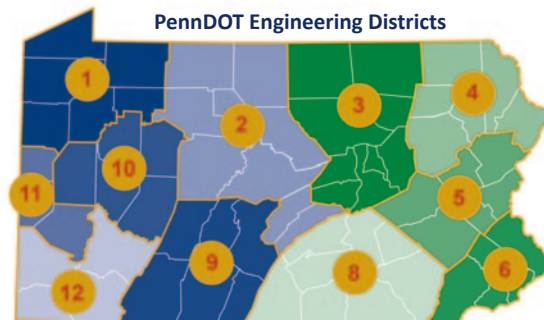
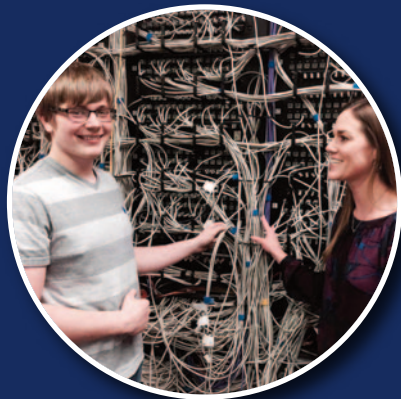


Get to know us: www.PennDOT.gov/jobs
Join our team: www.employment.pa.gov



District Contact Information:

District 1814-678-7085
District 2814-765-0400
District 3570-368-8686
District 4570-963-4061
District 5610-871-4100
District 6610-205-6700
District 8717-787-6653
District 9814-696-7250
District 10724-357-2800
District 11412-429-5000
District 12724-439-7315

Central Office or Driver and Vehicle Services:
717-787-1103



PennDOT Summer Internship Program

PennDOT is proud to be an Equal Opportunity Employer promoting workforce diversity.

www.PennDOT.gov/jobs

PUB 809SIP (7-24)





Keeping Pennsylvania moving...

The Pennsylvania Department of Transportation (PennDOT) is responsible for planning, designing, constructing, and maintaining approximately 44,000 state-operated roadways and nearly 25,400 bridges statewide. PennDOT also oversees public transit, passenger rail, rail freight, ports, and aviation. This is an enormous task requiring innovative solutions for today's needs. Additionally, PennDOT administers the state's nearly 12 million vehicle registrations and 10.8 million driver licenses and ID cards.

Pennsylvanians rely on PennDOT to keep them moving when and where they want with minimal inconvenience. To meet this critical mission, PennDOT needs individuals with a driving commitment to excellence and public service.

Explore the opportunities an internship provides!

The Program

PennDOT invests in students by providing real-world experience through our Summer Internship Program. Internships typically last from May through August. Students interested in the potential to obtain academic credit, in addition to their hourly wage for participation in the program, should discuss this opportunity with their academic advisor. See all that we do at www.pennDOT.pa.gov and discover how an internship can place you on the right road to a fulfilling career!

- **Engineering internship** – This is an exciting opportunity for students pursuing engineering and engineering technology majors. Interns may assist PennDOT employees in surveying activities, drafting and design efforts, construction inspections, collecting roadway data, reviewing environmental documentation, and/or participating in traffic-related studies.
- **Non-Engineering internship** – These opportunities are designed for majors such as Archaeology, Accounting, Business, Communications/Public Relations, Computer Science/IT, Environmental Science, Geology, Materials Science, Mathematics, and Safety Management. Non-engineering interns provide support for fiscal, communications, information technology, and other administrative functions performed throughout PennDOT operations.

There are many roads to success. Discover the right one for you.



Eligibility/Criteria

- Applicants must be a high school graduate or college student enrolled (or intending to enroll) on a full-time or part-time basis in a two or four year post secondary education program for the fall semester.



Application Process:

1. Review the map on the reverse side to obtain the district number(s) where you wish to apply.
2. If available to work in more than one district, submit an application to each district of interest.
3. Log on to www.employment.pa.gov, select "Internships" in the center of the screen, Search "PennDOT," and apply.

Get to know us: www.PennDOT.gov/jobs

Join our team: www.employment.pa.gov

