

CLARION COUNTY

**2025 DISTRICT 10
SPRING OUTREACH
MEETING**



Pennsylvania
Department of Transportation

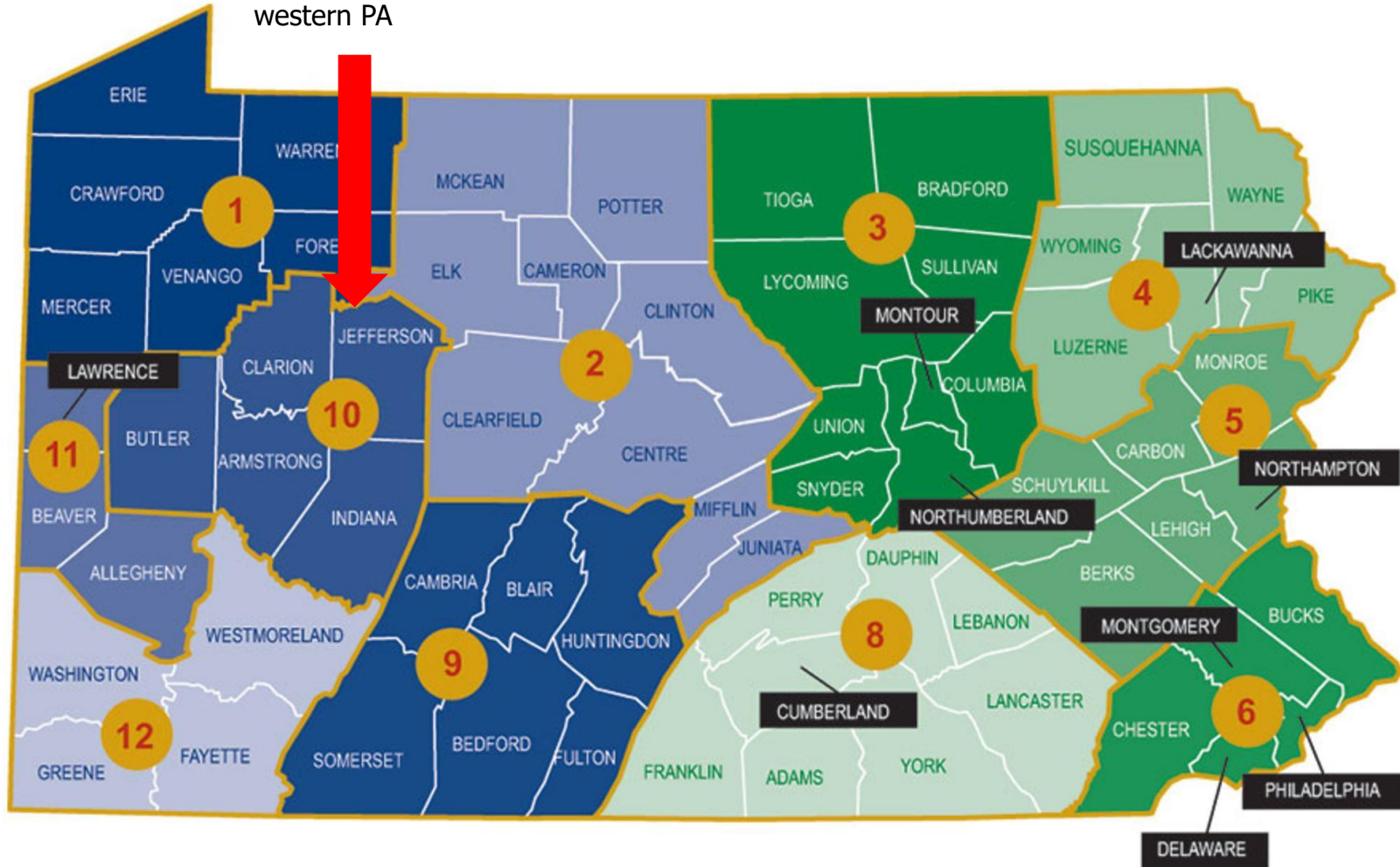
INTRODUCTIONS

- **BRIAN ALLEN, DISTRICT EXECUTIVE**
- **PAUL KOZA, ASSISTANT DISTRICT EXECUTIVE - CONSTRUCTION**
 - **PROJECTS IN CONSTRUCTION**
- **ALICE HAMMOND, ASSISTANT DISTRICT EXECUTIVE - DESIGN**
 - **PROJECTS IN DESIGN**
- **MATT BURKETT, ASSISTANT DISTRICT EXECUTIVE - MAINTENANCE**
- **JOSHUA CLINGER, CLARION COUNTY MAINTENANCE MANAGER**
 - **COUNTY MAINTENANCE OVERVIEW**
- **TINA GIBBS, DISTRICT COMMUNITY RELATIONS COORDINATOR**
 - **WEBSITE RESOURCES & SOCIAL MEDIA**



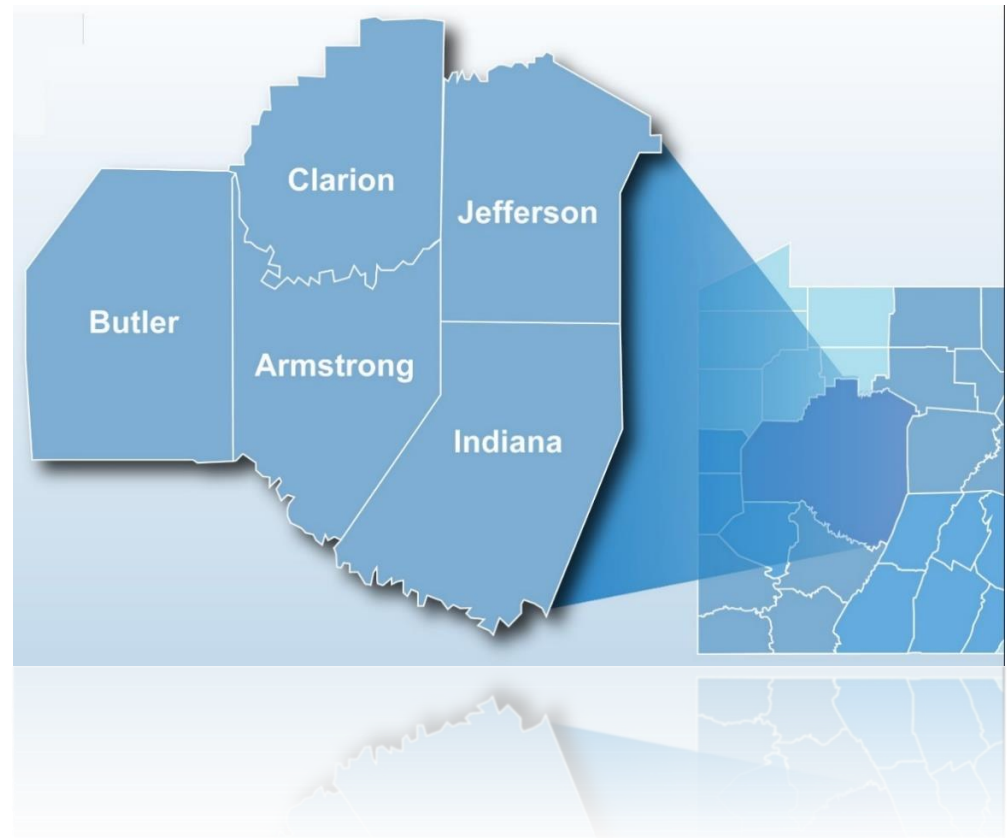
WHERE IS DISTRICT 10?

District 10 consists of Armstrong, Butler, Clarion, Indiana & Jefferson Counties in western PA



DISTRICT 10 OVERVIEW

- 5 counties
- 800 employees
- 1,630 bridges
- 7,107 lane miles
- 6,998 snow lane miles
- The 2025 construction & maintenance season in District 10 includes:
 - 40 construction projects
 - 195 miles of paving
 - 434 miles of seal coating
 - nearly 1,300 miles of shoulder cutting



CONSTRUCTION



Pennsylvania
Department of Transportation

CLARION RIVER ARCH BEARINGS

- Route 322
- Clarion & Paint townships
- Cost: \$1,650,000
- Anticipated Completion: 9/9/2025
- Prime Contractor: Allison Park Contractors
- Bridge preservation
 - 24-hour detour of Route 322 on weekend



ROUTE 68 DOLBY STREET TO TROUT RUN

- Route 68
- Monroe & Clarion townships
- Cost: \$13,368,068
- Anticipated Completion: 9/23/2027
- Prime Contractor: Francis J. Palo
- Safety improvement



ROUTE 2009 CHERRY RUN CHURCH BRIDGE

- Route 2009
- Toby Township
- Cost: \$1,342,007
- Anticipated Completion: 11/21/2025
- Prime Contractor: Francis J. Palo, Inc.
- Bridge replacement
- Detour: 5/27 - 8/18



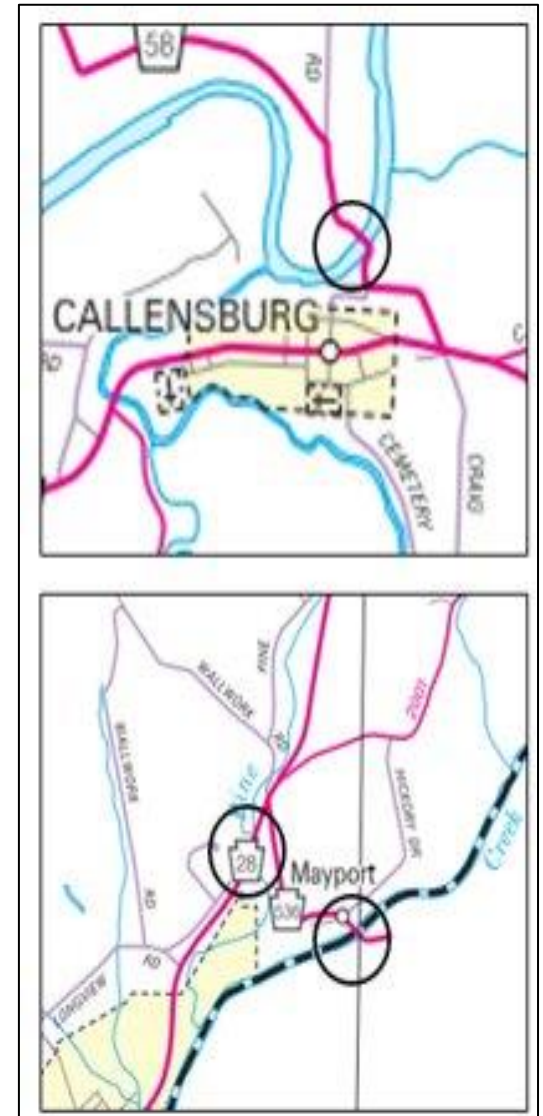
PILGRIMHAM BRIDGE #1

- Route 208
- Salem Township
- Cost: \$1,269,785
- Anticipated Completion: 8/29/2025
- Prime Contractor: S.E.T., Inc.
- Bridge replacement
- Detour: 10 days (between June 2 - Aug 6)



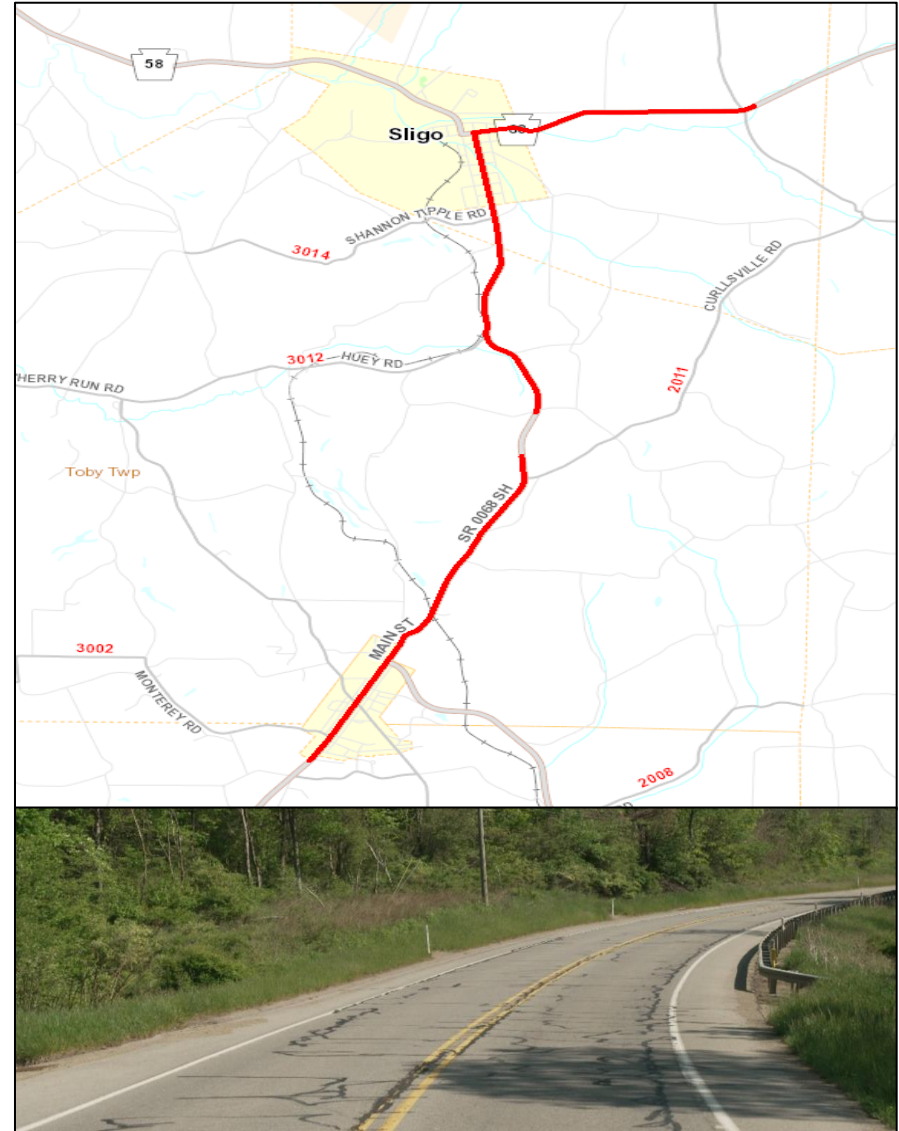
CLARION BRIDGE EPOXY GROUP

- Routes 28, 58, & 536
- Licking & Redbank townships
- Cost: \$177,148
- Anticipated Completion: 8/29/2025
- Prime Contractor: RAM Construction Services
- Bridge epoxy overlay



ROUTE 68 RIMERSBURG RESURFACING

- Route 68
- Toby & Piney townships & Sligo Borough
- Cost: \$2,741,479
- Anticipated Completion: 10/9/25
- Prime Contractor: Commercial Asphalt Supply DBA Shields Asphalt Paving
- Resurfacing project
- 6 miles



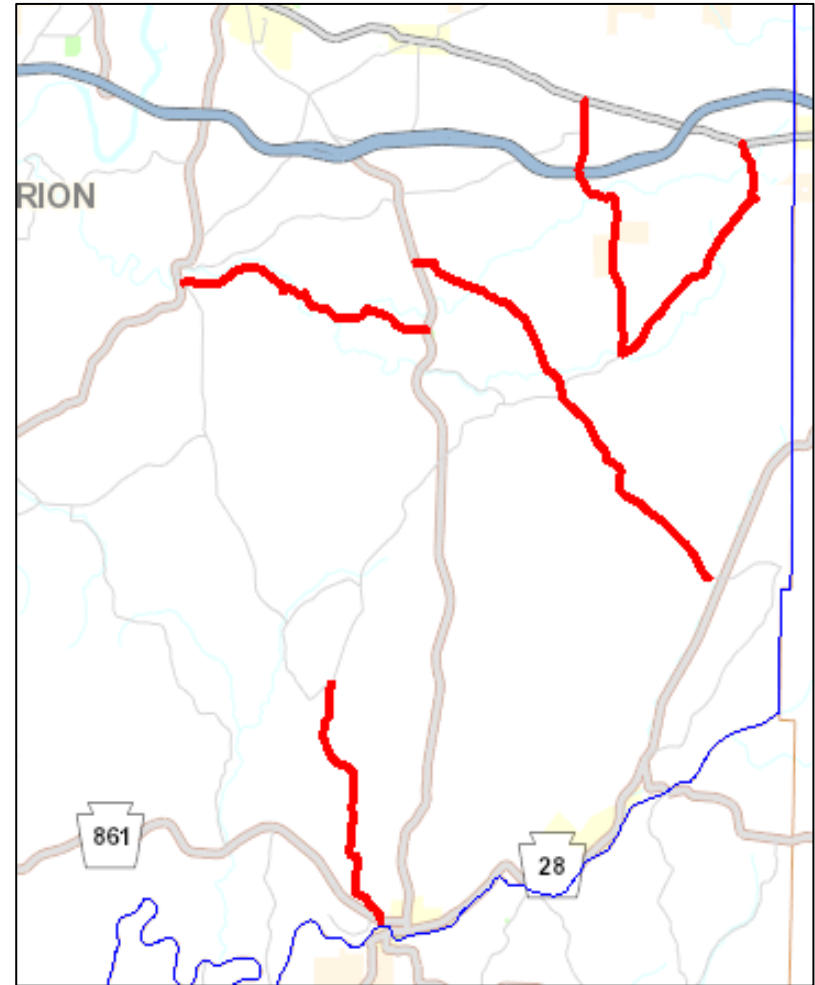
COUNTY GUIDERAIL

- County wide projects
- Mult-year contract
- Various routes
- Estimate <\$1 million
- Contractor: Penn Line Service
- Repair & replacement of guiderail



CLARION SECONDARY PAVING

- Routes 2001, 2003, 2005, 2012, & 2015 along with various P3 bridge approaches
- Various townships
- Cost: \$3 - 5 million
- Let Date: 6/26/2025
- Resurfacing project



PAINT MILLS BRIDGE

- Route 4029
- Paint Township
- Cost: \$2 - 2.5 million
- Let Date: 9/11/2025
- Bridge replacement
 - Detoured



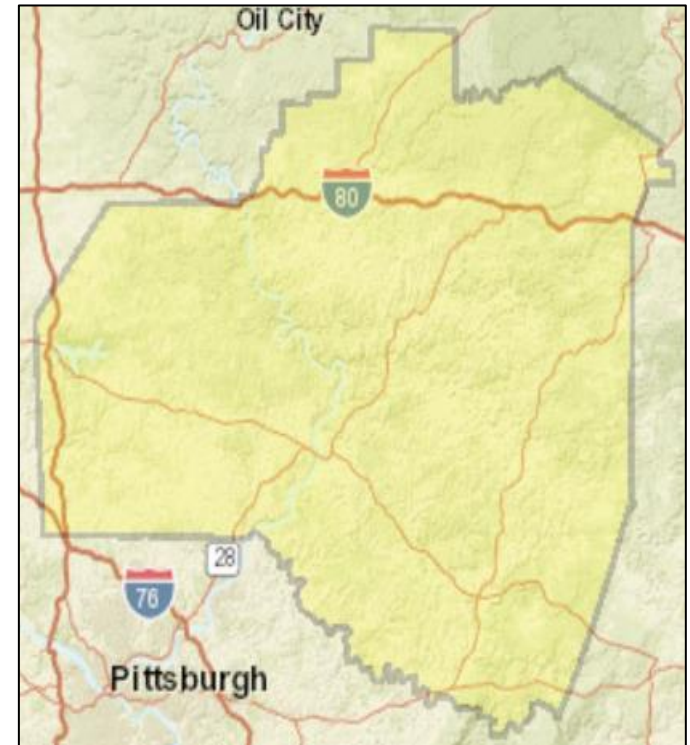
2025 DISTRICT 10 RPM

- District wide
- Cost: < \$500,000
- Let Date: 4/17/2025
- Raised pavement marker (RPM) replacements



2025 DISTRICT 10 SMALL PAINT

- District wide
- Cost: < \$1 million
- Let Date: 5/8/2025
- Paint legend replacement



DESIGN



Pennsylvania
Department of Transportation

Roadway Projects



HIGH FRICTION SURFACE TREATMENT



- Various state routes
- Safety improvement
- Various municipalities
- Construction in 2026
- Construction Estimate: \$500,000 - 1 million

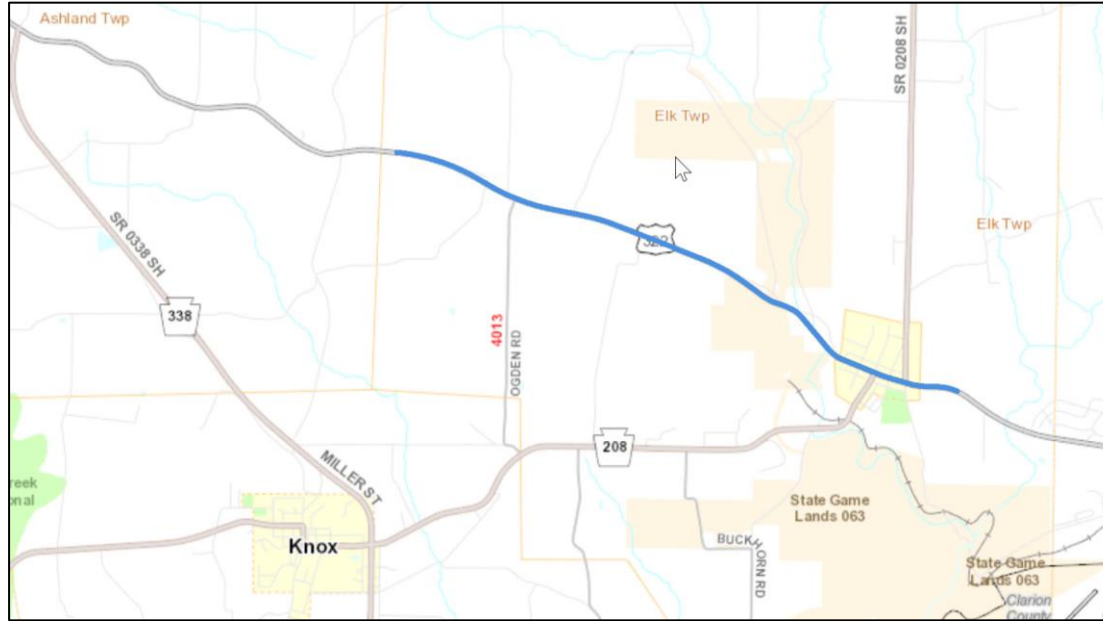
CLARION TO STRATTANVILLE RESURFACING



- Route 322
- Preventative maintenance
- Clarion Township
- Construction in 2026
- Construction Estimate: \$1 - 2.5 million



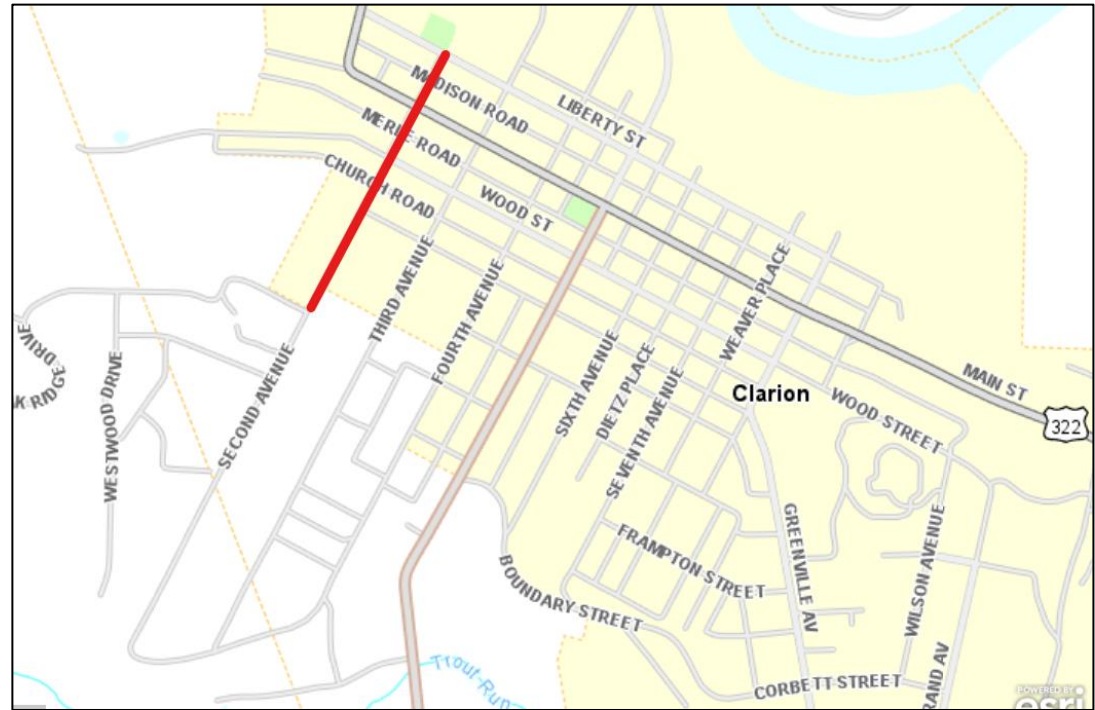
ELMO TO SHIPPENVILLE



- Route 322
- Preventative maintenance
- Elk Township & Shippenville Borough
- Construction in 2026
- Construction Estimate: \$2.5 – 5 million

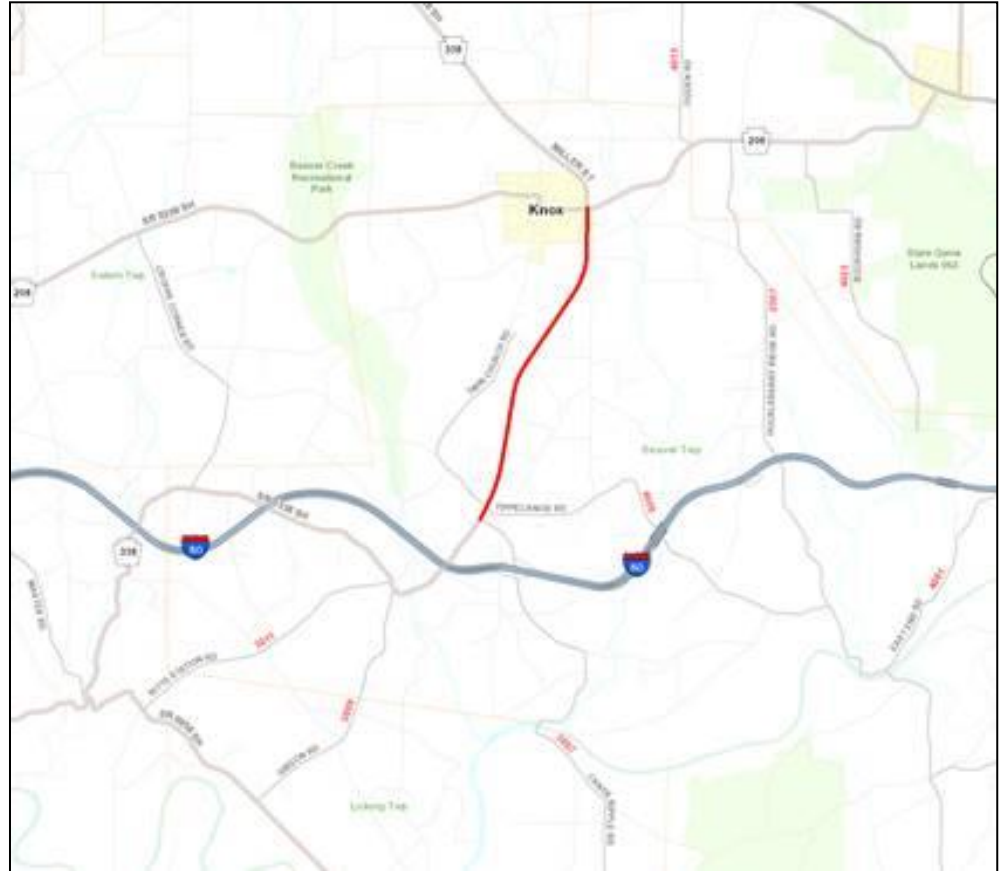
CLARION BOROUGH SAFE ROUTES TO SCHOOL & REC

- North/South 2nd Avenue
- Pedestrian safety improvements
- Clarion Borough
- Construction in 2026
- Construction Estimate: \$1 - 2.5 million



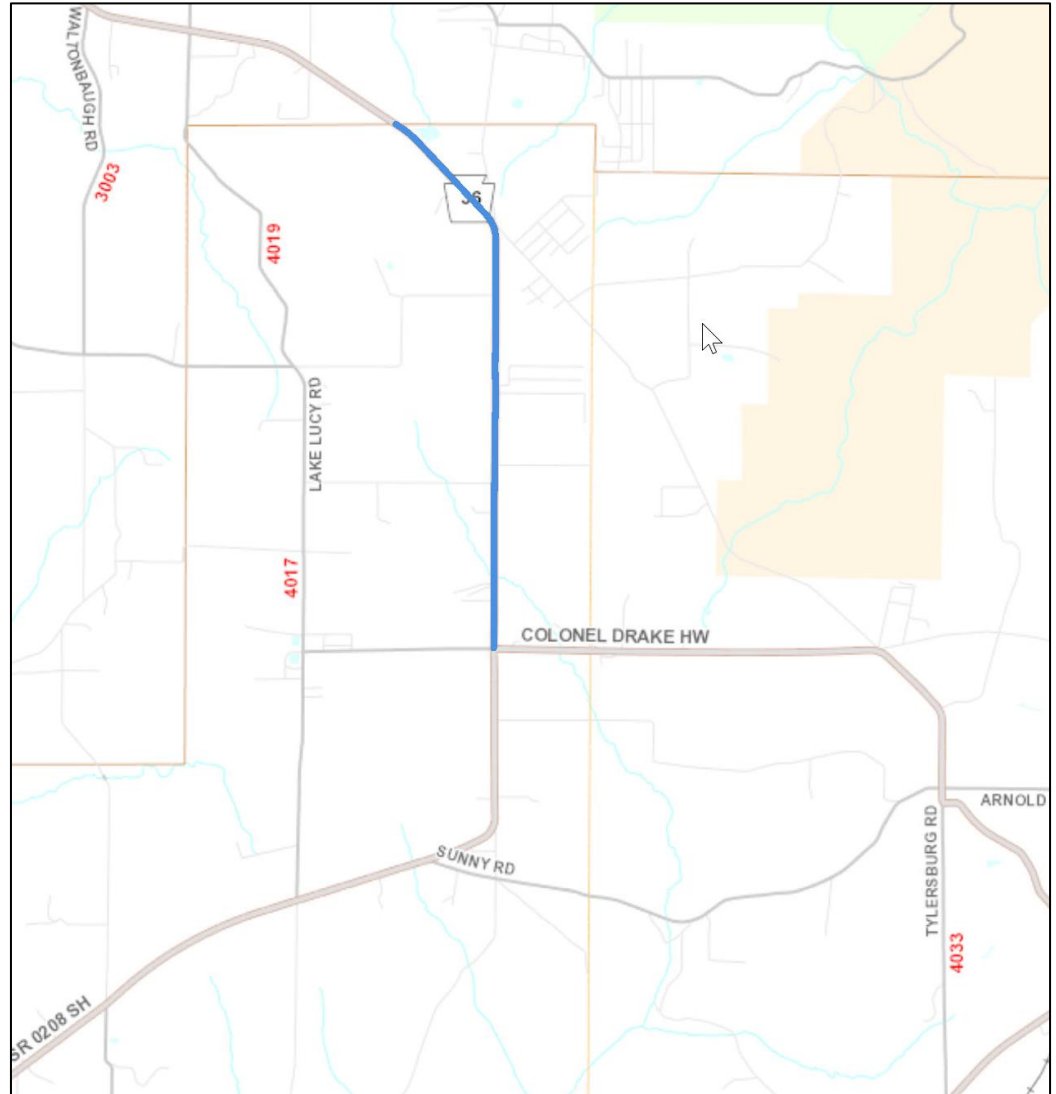
KNOX RESURFACING

- Route 338
- Resurfacing
- Knox Borough & Beaver Township
- Construction in 2028
- Construction Estimate:
\$1 - 2.5 million

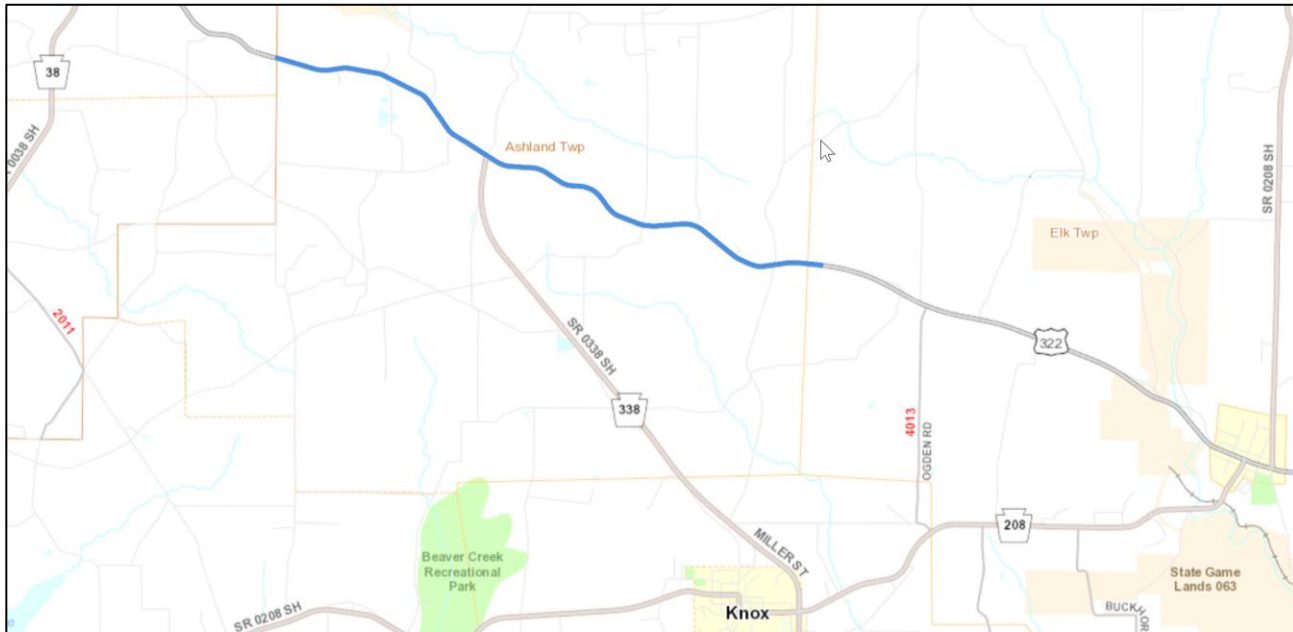


FRILLS CORNER NORTH

- Route 36
- Preventative maintenance
- Washington Township
- Construction: TBD
- Construction Estimate:
\$2.5 – 5 million

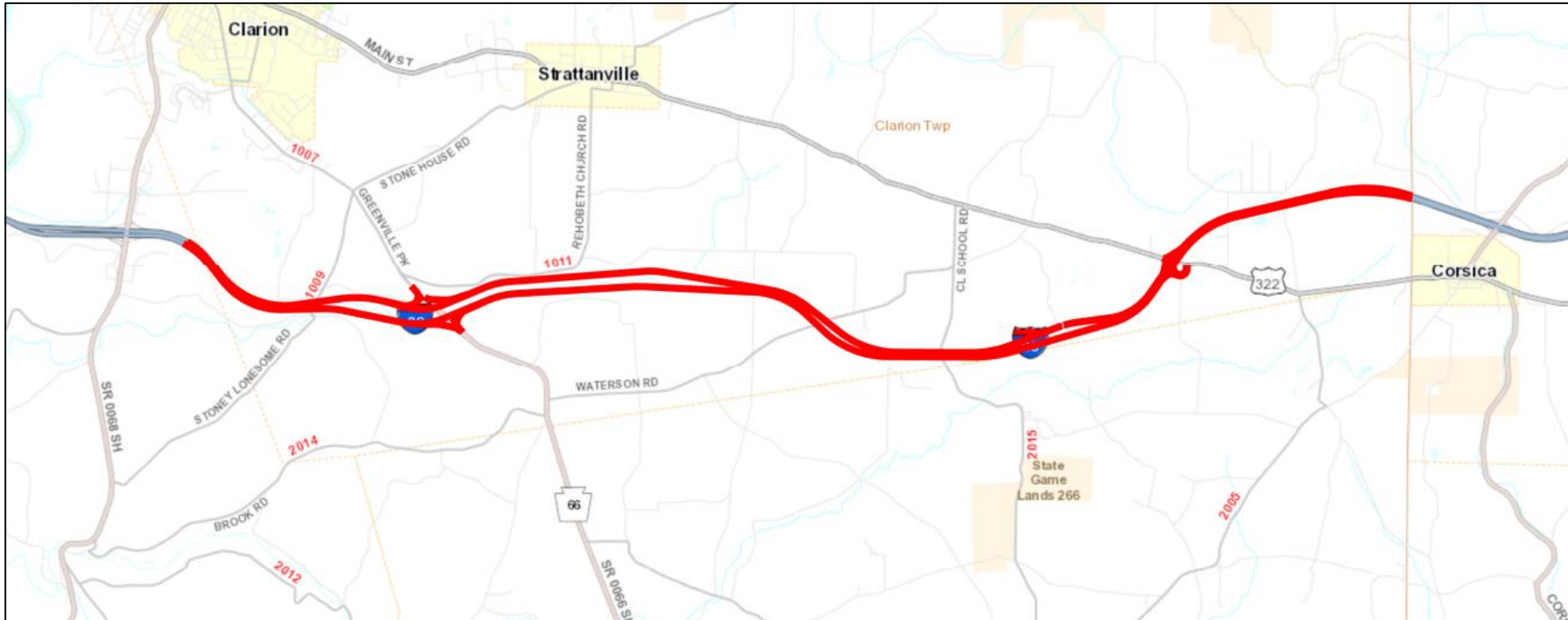


COUNTY LINE EAST PM



- Route 322
- Preventative maintenance
- Ashland & Elk townships
- Construction: TBD
- Construction Estimate: \$2.5 – 5 million

I-80 STRATTANVILLE RECONSTRUCTION



- I-80
- Reconstruction
- Clarion, Limestone & Monroe townships
- Construction: TBD
- Construction Estimate: \$100 – 125 million



Bridge Projects

SLIGO PEDESTRIAN BRIDGE

- Pedestrian bridge replacement
- Sligo Borough
- Construction in 2026
- Construction Estimate:
\$500,000 - \$1 million



BOYD RUN CULVERT REHAB

- I-80
- Bridge rehabilitation
- Beaver Township
- Construction in 2027
- Construction Estimate:
\$2.5 – 5 million



LITTLE LICKING CREEK NO.1

- Route 68
- Bridge replacement
- Sligo Borough
- Construction in 2027
- Construction Estimate:
\$1 - 2.5 million



PAINT CREEK BRIDGE

- Route 322
- Bridge replacement
- Elk Township
- Construction in 2027
- Construction Estimate: \$5 - 7.5 million



T-327 OVER CANOE CREEK

- T-327 Shettler Road
- Bridge replacement
- Beaver Township
- Construction in 2027
- Construction Estimate:
\$500,000 – 1 million



CRAIG ROAD BRIDGE

- Route 3013
- Bridge preservation
- Licking Township
- Construction in 2027
- Construction Estimate:
\$500,000 – 1 million



ROUTE 4001 OVER I-80 GROCE HILL BRIDGE

- Route 4001
- Beaver Township
- Bridge reconstruction
- Construction: TBD
- Construction Estimate: \$5 – 7.5 million



I-80 CLARION RIVER BRIDGE

- I-80
- Bridge replacement
- Paint Township
- Construction: TBD
- Construction Estimate:
\$150 - \$250 million



T-619 OVER TOBY CREEK

- T-619 Moore Drive
- Bridge replacement
- Farmington Township
- Construction: TBD
- Construction Estimate: \$1 - \$2.5 million



T-385 OVER CANOE CREEK

- T-385 Eagle Furnace Road
- Bridge replacement
- Beaver Township
- Construction: TBD
- Construction Estimate: \$1 - 2.5 million



PILGRIMHAM BRIDGE #2

- Route 208
- Bridge replacement
- Salem Township
- Construction: TBD
- Construction Estimate: \$1 - 2.5 million



HUEFFNER BRIDGE NO.1

- Route 4008
- Bridge replacement
- Knox Township
- Construction: TBD
- Construction Estimate:
\$500,000 – 1 million



CLARION COUNTY MAINTENANCE



Pennsylvania
Department of Transportation

MANAGEMENT TEAM

Clarion County Maintenance

21057 Paint Boulevard
Shippensburg, PA 16254
(814) 226-8200

County Manager – Joshua Clinger

Equipment Manager – Brant Cirrincione

Assistant Manager Northern Section –
Matthew Smith

Assistant Manager Southern Section –
Mark Culp

Roadway Programs Coordinator – Ashley
Dunkle



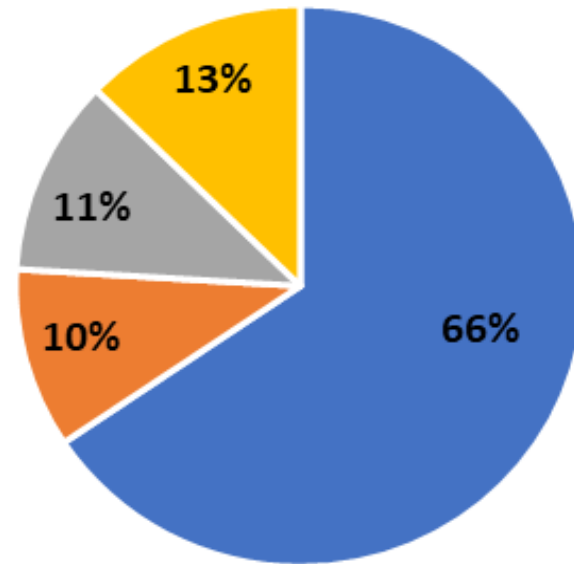
COUNTY BUDGET

Clarion County Fiscal Year 2024

Net Budget = \$13 million

- Personnel = \$8.5 million
- Operating = \$4.5 million

Budget Expenditures



■ Personnel

■ Winter

■ Equipment

■ Roadway Maintenance



2024 – 2025 Winter Material Usage

Material	Current Usage	Average Usage
Salt	9,734 tons	8,480 tons
Anti-skid	7,772 tons	5,676 tons
Salt Brine	349,345 gallons	178,510 gallons

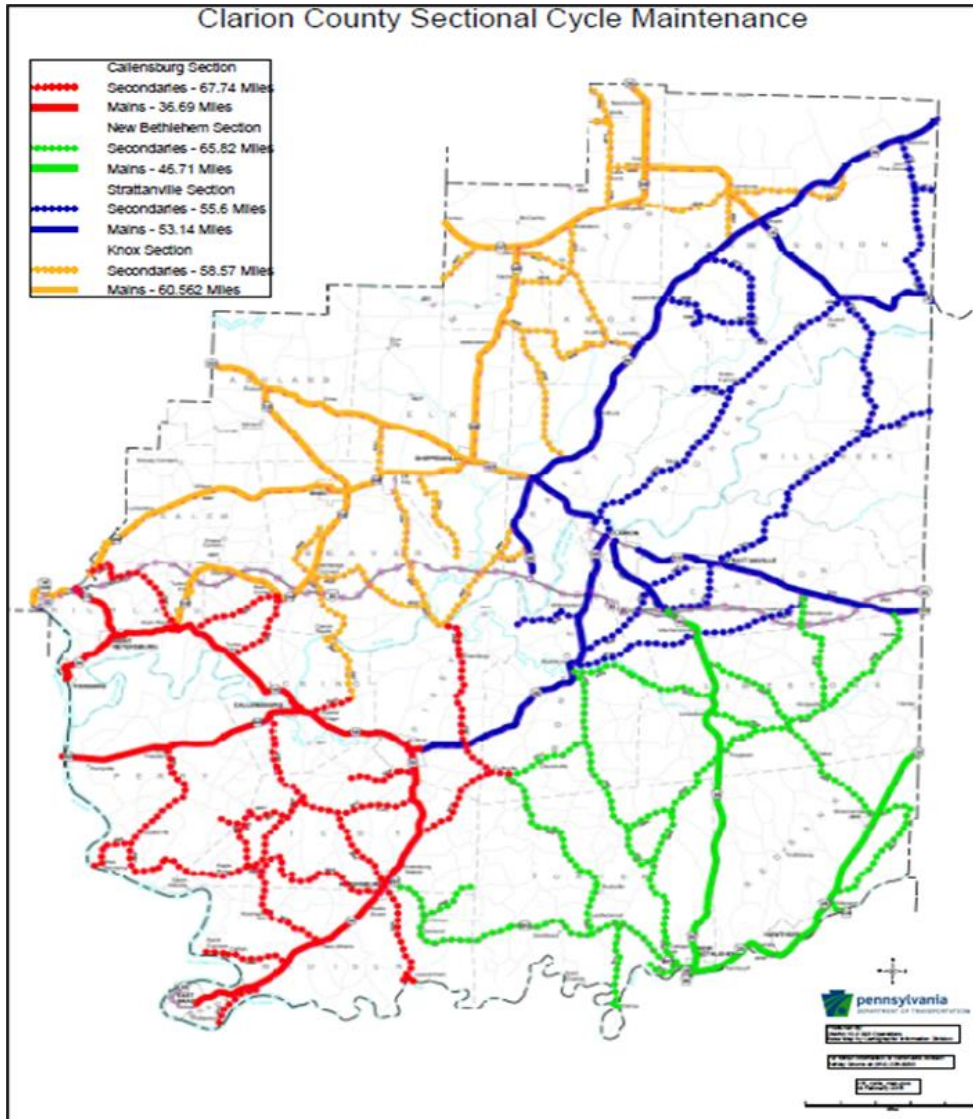
Winter Materials Budget

Current material expenses - \$1.3 million

Average material expenses - \$583,000



CYCLICAL MAINTENANCE



Section 1: Drainage

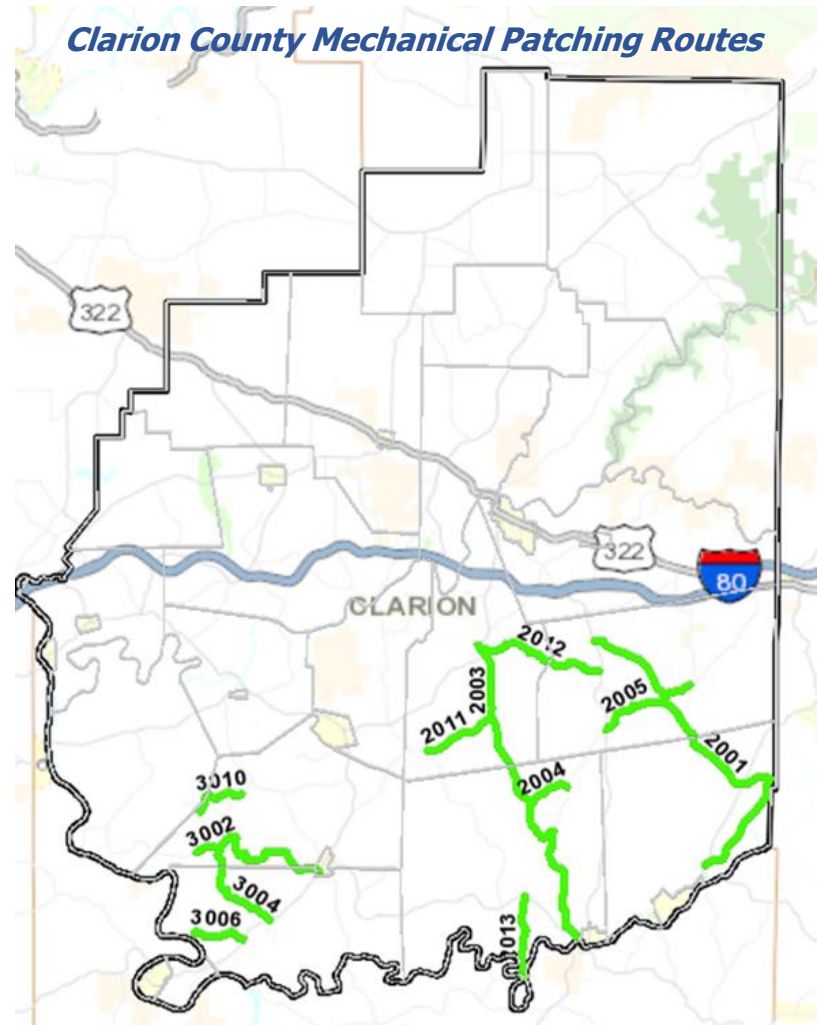
Section 2: Shoulder Cutting

Section 3: Seal Coat

Section 4: General Maintenance

MECHANICAL PATCHING

Planned quantity – 4,000 tons

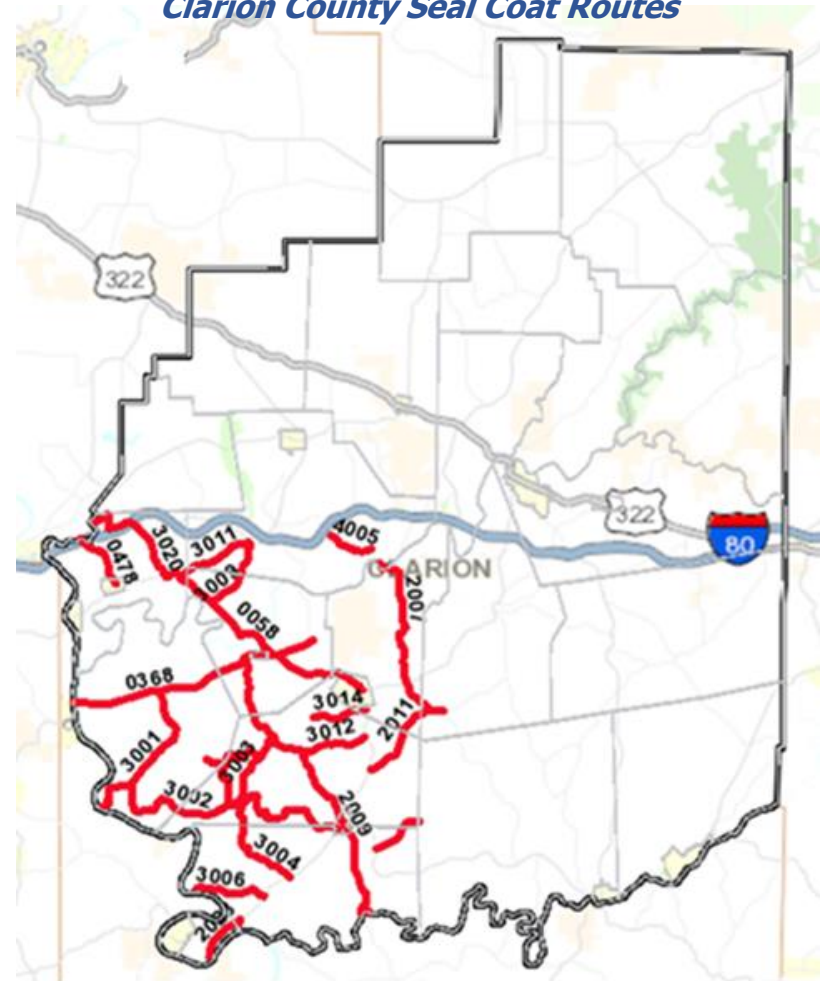


SEAL COAT

Planned quantity – 360,000 gallons
90 miles of roadway



Clarion County Seal Coat Routes

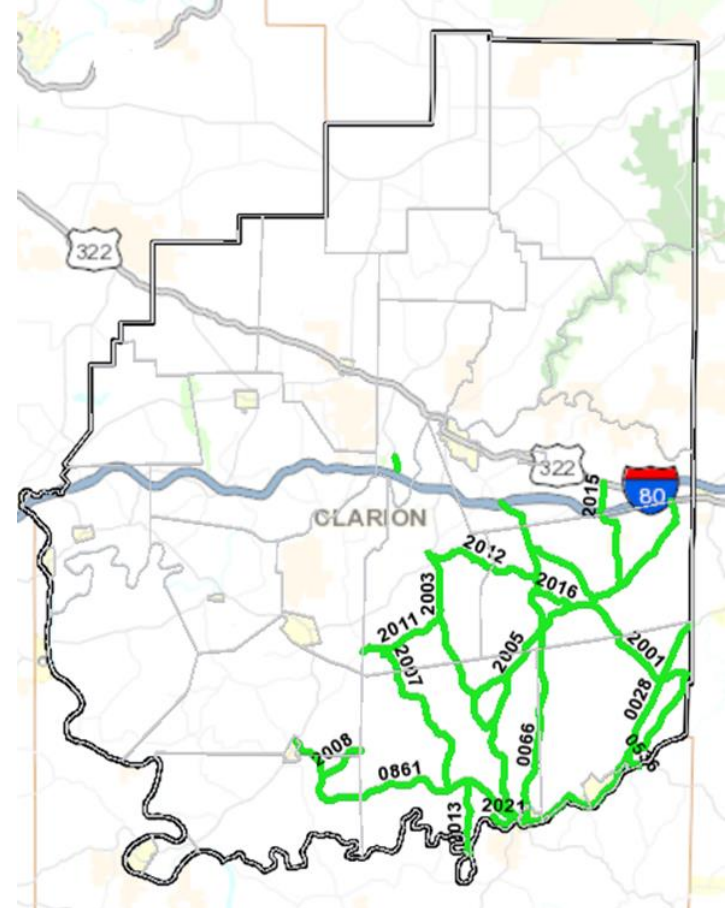


SHOULDER CUTTING

Planned quantity – 207.4 lane miles
103 roadway miles

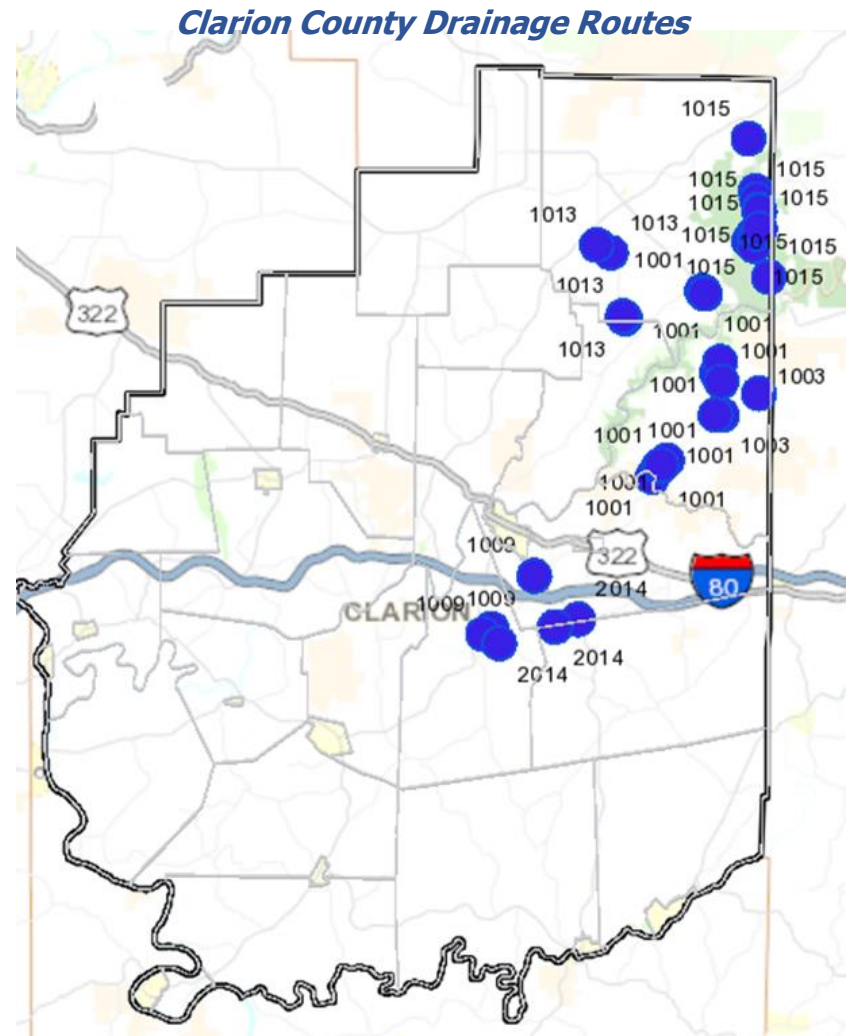


Clarion County Shoulder Cutting Routes



PIPE REPLACEMENT

Planned quantity – 1,720 feet of pipe



CRACK SEALING

Planned quantity – 94.7 lane miles



Clarion County Crack Sealing Routes



DEPT FORCE BRIDGE

Summer 2025 Work

- I-80 68 mm EB/WB - Repair/Replace concrete
- I-80 45 WB – Repair/Replace slope wall
- I-80 44 WB – Repair/Replace slope wall
- Route 3007 seg 90 – Repair pier
- Route 3007 seg 50 – Remove vegetation
- Route 3006 seg 10 – Repoint masonry
- Route 36 seg 4 – Repair concrete deck, repair pier
- Route 1001 seg 70 – Reseal deck joint, repair concrete beam, abutment, parapet & deck
- Route 368 seg 10 – Repair bridge parapet, remove vegetation
- Route 2007 seg 210 – Repair abutment, repair concrete deck
- Route 28 seg 30 – Repoint masonry
- Route 3003 seg 70 – Repair culvert barrel
- Route 2009 seg 160 – Repair headwall wing, repair culvert barrel
- Route 66 seg 240 – Rock protection
- Route 58 seg 170 – Rock protection
- Route 58 seg 150 – Rock protection
- Route 38 seg 70 – Repair abutment



COUNTY AGILITY

AGILITY PROGRAM

Agility is a tool to build relationships with local communities by sharing & exchanging services & resources.



Previous Clarion County Agility Agreements

✓ **Clarion County Career Center**

- **PennDOT** - perform maintenance on parking lot & access road.
- **Career Center** – Building & trades students built a storage shed for use at PennDOT stockpiles.

Call now for Agility opportunities

(814)226-8200



RESOURCES



Pennsylvania
Department of Transportation

DISTRICT 10 WEB RESOURCES

- New website for Commonwealth agencies
 - [District 10 | Department of Transportation | Commonwealth of Pennsylvania](https://www.pa.gov/agencies/pennDOT/regional-offices/district-10.html)
(<https://www.pa.gov/agencies/pennDOT/regional-offices/district-10.html>)
- Outreach documents will be posted under the District 10 Outreach link
 - Doing Business with PennDOT Resource Guide
 - Spring Outreach Meeting presentations & maps

ARMSTRONG • BUTLER • CLARION • INDIANA • JEFFERSON

Engineering District 10

PennDOT's Engineering District 10 is responsible for the state-maintained transportation network across Armstrong, Butler, Clarion, Indiana, and Jefferson Counties. This includes 3,180 total road miles and 1,630 total bridges.

We also work with local governments, elected officials, stakeholders and the public on keeping people and goods moving safely and efficiently in this region.

[View District 10 Contacts](#)

[View District 10 Projects](#)



Pennsylvania Department of Transportation

Search

About PennDOT >

News & Media >

Traveling in PA >

Projects Near You >

Regional Offices

- District 1 >
- District 2 >
- District 3 >
- District 4 >
- District 5 >
- District 6 >
- District 8 >
- District 9 >
- District 10** ▾
- Maintenance and Traffic Bulletins
- District 10 Outreach**

Search

Results 1-10 of 554

Sort & Filter

PennDOT Reduces Speed Limit to 55 mph on I-80 in Clarion and Jefferson Counties

January 28, 2025

Clarion County Jefferson County District 10 Department of Transportation

PennDOT Extends the Length of the Speed Limit Restrictions on I-80 in Clarion and Jefferson Counties

January 16, 2025

Clarion County Jefferson County District 10 Department of Transportation

PennDOT Reduces Speed Limit to 45 mph on I-80 in Clarion and Jefferson Counties

January 16, 2025

Clarion County Jefferson County District 10 Department of Transportation

Clarion River Bridge Rehabilitation Prince Weather Dependent Lane

PennDOT District 10

2550 Oakland Avenue
Indiana, PA 15701 3388

Phone: 724 357 2800
Fax: 724 357 2084
Press Office: 724 357 2829

Business Hours: 8:00 a.m. - 4:30 p.m. Monday - Friday

[All District 10 Contacts](#)

[Join PennDOT Pittsburgh on Facebook](#)

[Follow STIPA Pittsburgh on X](#)

Subscribe to District 10 News

Enter your email to receive PennDOT updates on District 10

Input Text

Public Resources



CONNECT WITH DISTRICT 10

Website:

[District 10 | Department of Transportation | Commonwealth of Pennsylvania](https://www.pa.gov/agencies/penndot/regional-offices/district-10.html)
(<https://www.pa.gov/agencies/penndot/regional-offices/district-10.html>)

Subscribe to District 10 news:

To receive emails when a press release is posted to the website, enter your email address into the "Subscribe to District 10 News" box on our District 10 home page.

Join our Groups on Facebook:

[Pittsburgh PennDOT](#)
[Northwest PennDOT](#)

X (Twitter):

[@511PA Erie](#)
[@511PA Pittsburgh](#)

District 10 contacts

District Executive, Brian Allen - 724-357-2806

Assistant District Executive - Construction, Paul Koza, Jr. - 724-357-2812

Assistant District Executive - Design, Alice Hammond - 724-357-2805

Assistant District Executive - Maintenance, Matthew Burkett - 724-357-2809

Community Relations Coordinator, Tina Gibbs - 724-357-2829

District Office (10-0)

2550 Oakland Avenue
Indiana, PA 15701
724-357-2800

*Standard hours of operation
are 8:00 AM to 4:30 PM*

