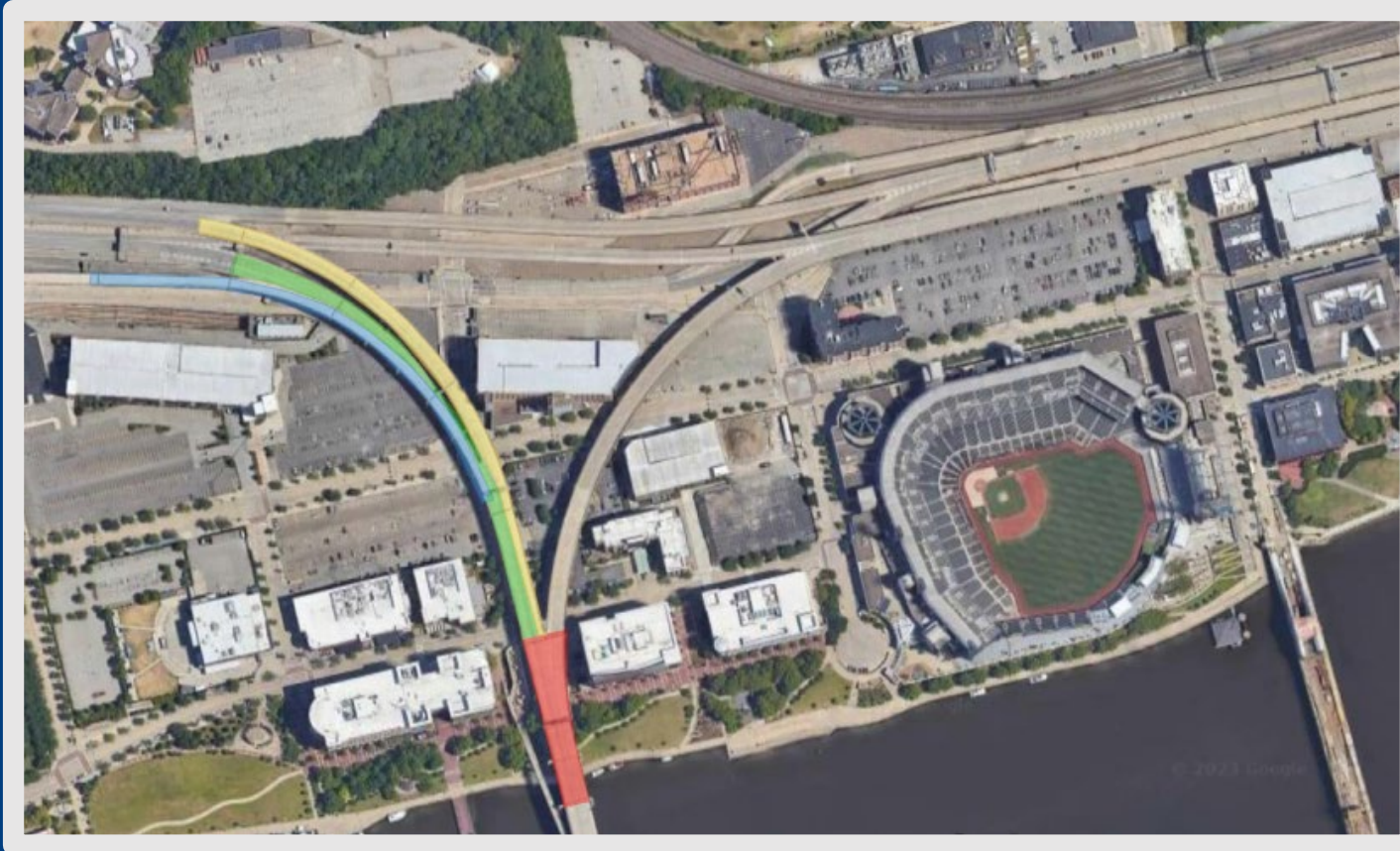


# NORTH SHORE BRIDGES PRESERVATION PROJECT



**SR 65-A57**  
**CITY OF PITTSBURGH, ALLEGHENY COUNTY**



**WSP**



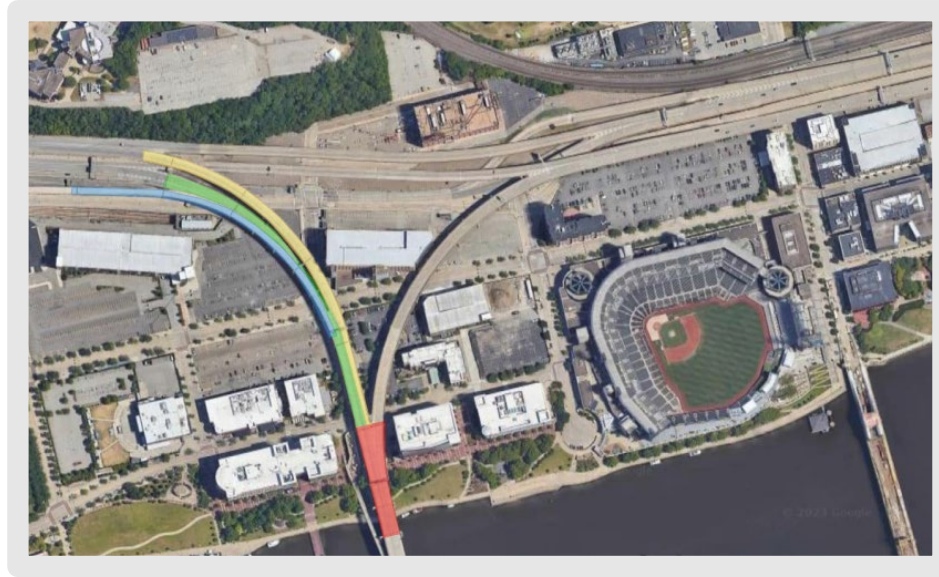
# PROJECT TEAM



- PENNDOT DESIGN DIVISION
  - Direct Questions To:
    - Subbarao Chaluvadi, P.E. | Project Manager
      - Phone: (412) 429-4907
      - Email: [SCHALUVADI@pa.gov](mailto:SCHALUVADI@pa.gov)
    - Nick Krobot, P.E. | Assistant Environmental Manager
    - Mark Young | District Environmental Planning Manager
- PENNDOT PRESS OFFICE
  - Steve Cowan | District Press Officer



# PURPOSE AND NEED



## Project Purpose:

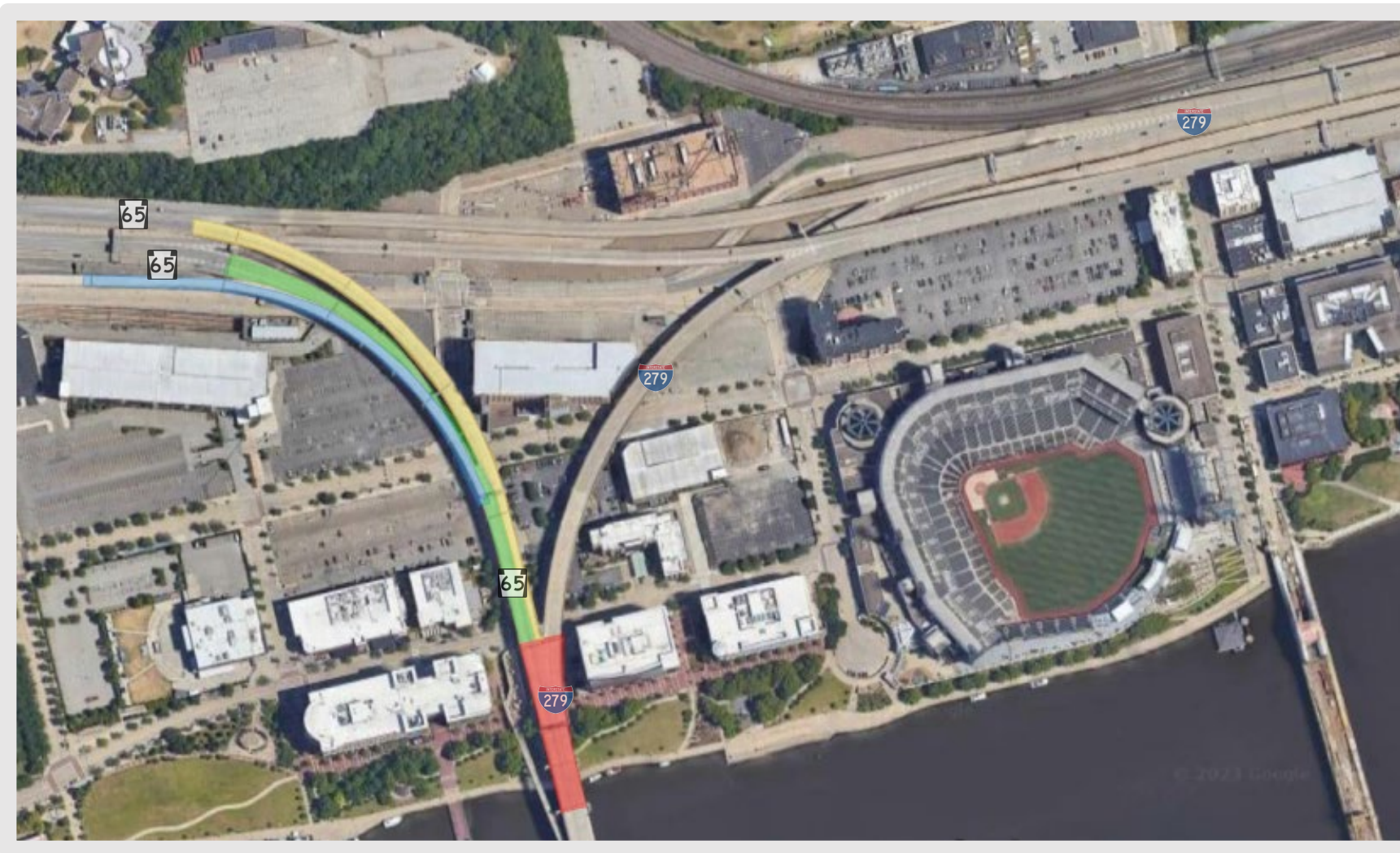
- To maintain safe and reliable travel on this portion of SR 65 and local streets. (4 Total Bridges)

## Project Need:

- The bridges are in poor condition. Leaking expansion joints are allowing water onto bridge components and accelerating deterioration. The bridge decks have significant potholes and pavement deterioration.



# PROJECT KEY



SR 65 NB to  
Reedsdale St

SR 65 SB Ramp to  
Ft. Duquesne  
Bridge Lower Deck

Ft. Duquesne  
Upper and  
Lower Decks

SR 65 NB Ramp  
from Ft. Duquesne  
Bridge



WSP



# PROPOSED PROJECT IMPROVEMENTS



## Cost and Schedule:

- Estimated Construction Cost *\$9 Million*
- Anticipated Construction Duration  
*Spring 2025 – Fall 2025*

*Estimated Construction Cost and Duration will be updated during Final Design.*

## Major Construction Activities:

- Bridge Expansion Dam Replacements
- Deck Overhang and Underside Concrete Spall Repairs
- Gutterline Sealing
- Addressing Non-Steel Related Maintenance Priority 2 and 1 Items (Bridge Deck Concrete Spall Repairs, etc.)



# PROJECT SUMMARY



## Parks & Trails:

- Allegheny River Water Trail
  - Three Rivers Heritage Trail
  - North Shore Riverfront Park
- ⊘ No Impact



# ROAD CLOSURE SUMMARY

## NOTE:

Closures will be phased, and will not all occur simultaneously

SR 65 North Ramp From Ft Duquesne Bridge (BRKEY 801)

SR 65 South Ramp To Ft Duquesne Bridge (BRKEY 804)

Fort Duquesne Lower Deck (BRKEY 43172)

Fort Duquesne Upper Deck (BRKEY 1023)

SR 65 North, from Ft Duquesne Bridge to Reedsdale Street (RAMP U, BRKEY 2837)

Detailed Detour Plans  
located in a separate  
attachment



# ROAD CLOSURE SUMMARY



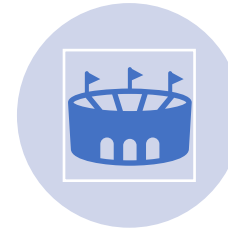
Work will be done over several months and scheduled to minimize traffic impacts.



Ramp Closures and Detours will be required for safety.



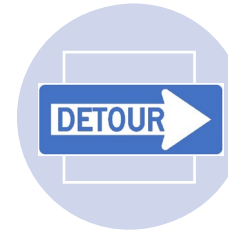
Detours will be posted, and advance notice given by PennDOT via press releases and road signs.



Road closures will be coordinated around events and holidays.



Drivers should allow extra time and consider alternate routes.



Truck and car detours will be signed and routed on the local highway network

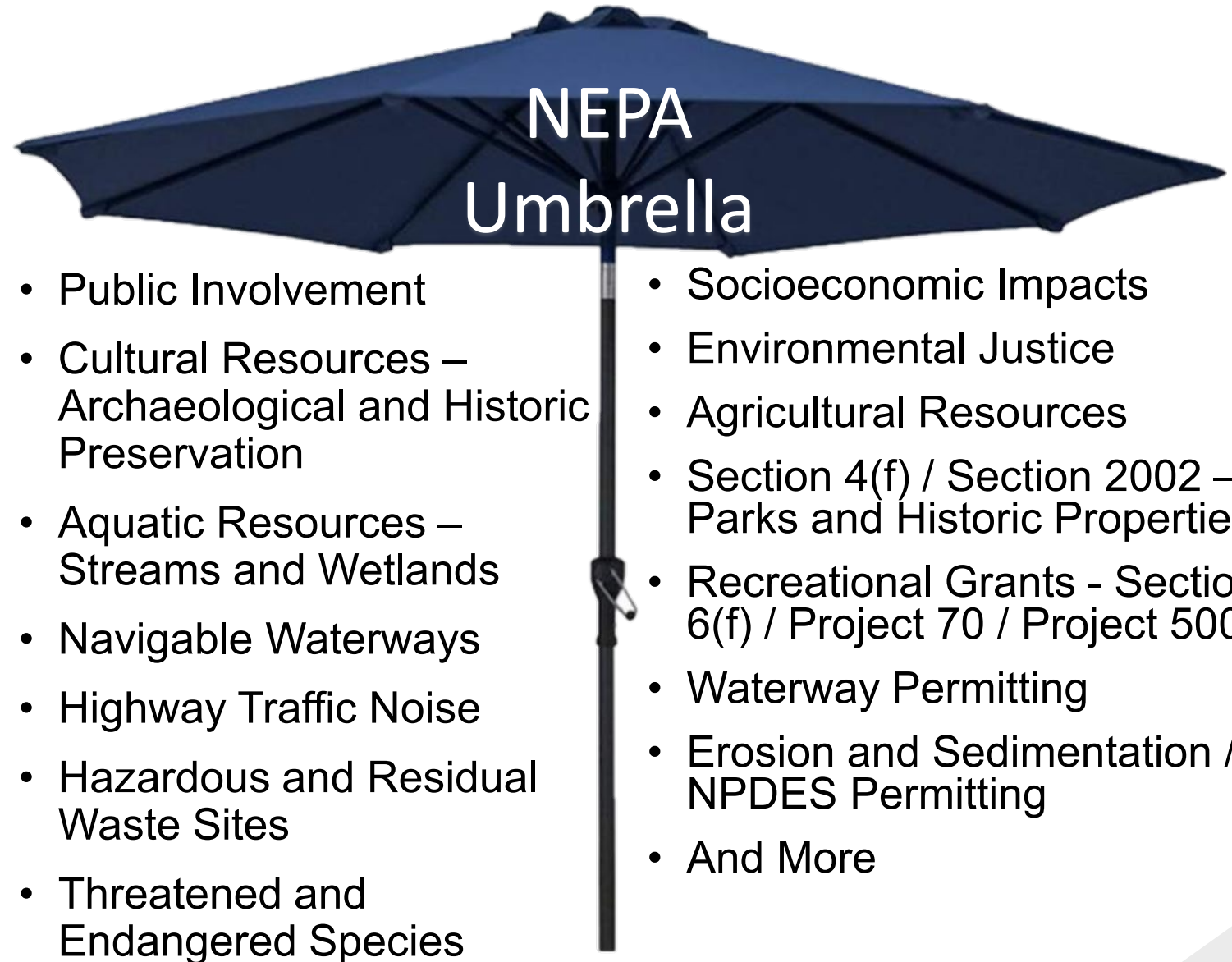




# NATIONAL ENVIRONMENTAL POLICY ACT

Public outreach begins with PennDOT Connects and extends into the **NEPA** (National Environmental Policy Act) process:

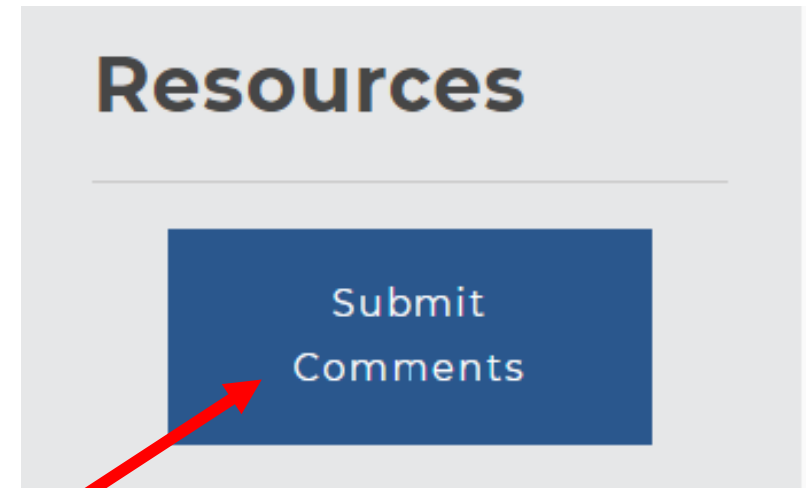
- PennDOT Connects is a project planning and development approach that engages local and planning partners by collaborating with stakeholders before project scopes are developed.
- NEPA requires agencies to integrate environmental values into their decision-making processes by considering the environmental impacts of their proposed actions and reasonable alternatives to those actions
- NEPA also includes public involvement activities and gathering feedback from the public
- This PowerPoint presentation is part of District 11-0's coordination with the public to obtain feedback on the project and to meet NEPA requirements.



# NORTH SHORE BRIDGES PROJECT SURVEY

## PLEASE COMPLETE THE PROJECT SURVEY

- The project survey can be found on the project website.
- Click the tile under Resources labeled “Submit Comments” on the right side of the screen.



Click Here