



The latest news and information from PennDOT Connects' network of people and places



## PennDOT Connects August 2022 Newsletter

### Safe Streets and Roads for All (SS4A) Grant Program

The Bipartisan Infrastructure Law (BIL) established the new Safe Streets and Roads for All (SS4A) discretionary program with \$5 billion available over the next 5 years. In fiscal year 2022 (FY22), up to \$1 billion is available. The SS4A program funds regional, local, and Tribal initiatives through grants to prevent roadway deaths and serious injuries.

#### Eligible activities

The following activities are eligible for the SS4A program:

- Develop or update a comprehensive safety action plan (Action Plan).
- Conduct planning, design, and development activities in support of an Action Plan.
- Carry out projects and strategies identified in an Action Plan.

The deadline for applications is **September 15, 2022**.

To learn more about the SS4a grant program, visit [the USDOT website](#).

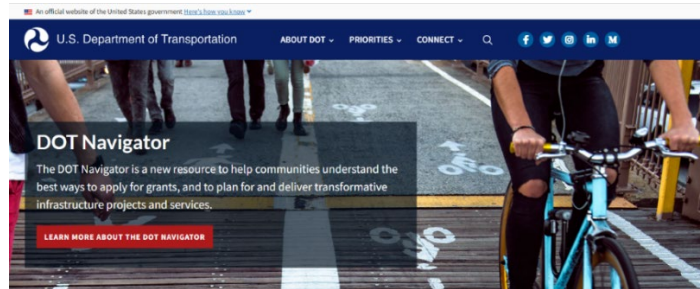
#### How to Apply for the SS4A Opportunity

Select the links below to find the following application information and resources:

- [Final Application Instructions](#)
- [FY22 NOFO Has Been Amended](#)
- [Additional Information on Applying Through Grants.gov](#)
- [Late Application Policy](#)
- [SS4A Application Aids](#)
- [SS4A Joint Applicant Scenarios](#)

### DOT Navigator

The [DOT Navigator](#) is a new resource to help communities understand the best ways to apply for grants and plan for and deliver transformative infrastructure projects and services.

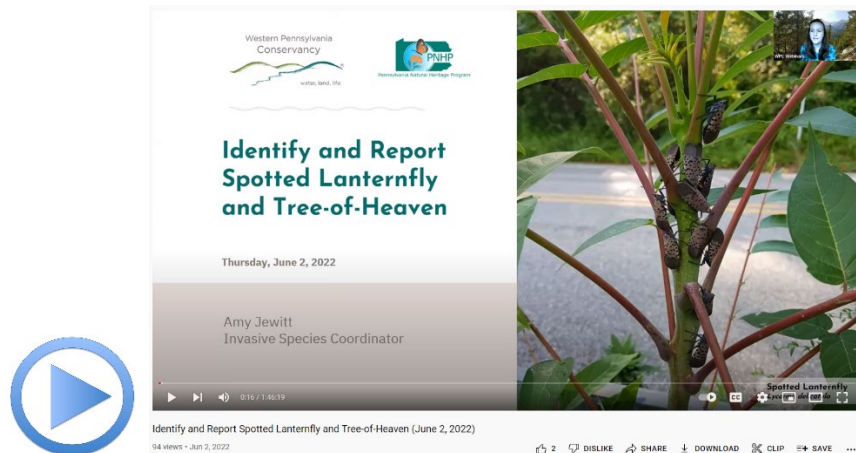


## Attention Community Scientists: Search for and Report Spotted Lanternfly and Tree-of-Heaven, and Be Eligible to Win a Prize

The [Western Pennsylvania Conservancy](#) and [Pennsylvania iMapInvasives Program](#) are hosting a unique new volunteer event to identify and report [spotted lanternfly](#) (SLF) and its favored host plant, [tree-of-heaven](#).

Individuals, organizations, municipalities, and companies around the state can participate. You'll claim an area in an online interactive map and conduct on-the-ground searches in that area over the summer and fall. You'll report the presence of SLF or tree of heaven, or not-detected findings, to iMapInvasives and/or the Penn State Extension online reporting tool.

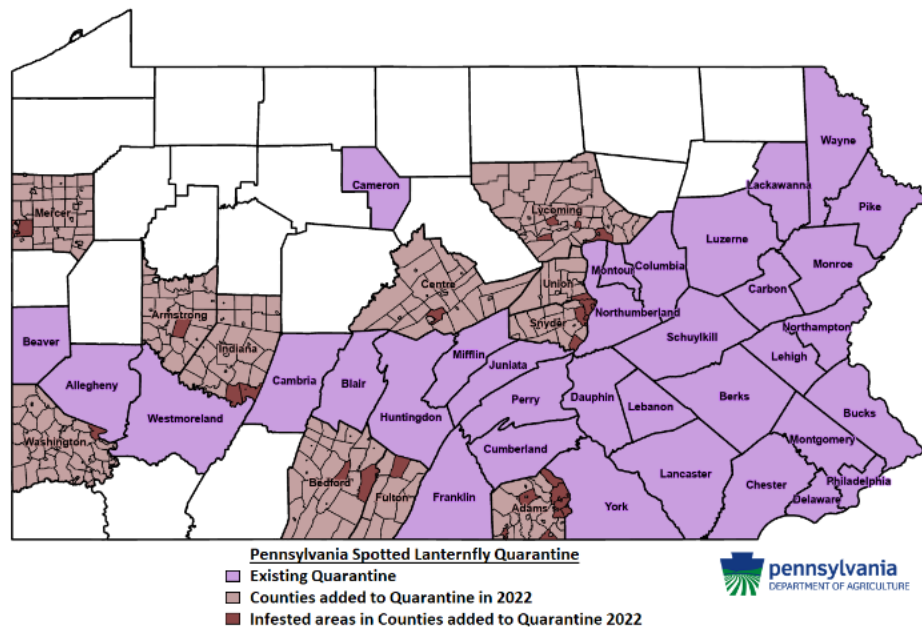
After watching "[Identify and Report Spotted Lanternfly and Tree-of-Heaven](#)" for detailed instructions, you simply contact the event host, Amy Jewitt ([ajewitt@paconserve.org](mailto:ajewitt@paconserve.org)), to be added as an official participant and claim at least one location to survey. Surveys can be conducted through November.



This is a statewide event. Participants can conduct a survey both in regions where SLF infestations haven't been found

yet or have only recently been located in a few spots—including much of northwest, northcentral, and southwest Pennsylvania—and in the existing SLF quarantine zone. Join in! It's a great reason to get out on your own or as a group for walks or hikes in new spots, or is easy to add to your regular outdoor routine. By

### Where is SLF Found?

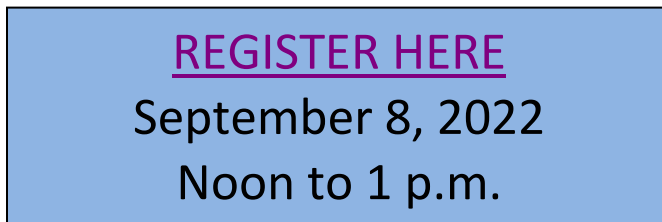


random drawing, prizes will be awarded to five lucky participants!

## Drop-In Aligning Your Ordinances, Policies, and Codes with Your Active Transportation Plan (ATP)

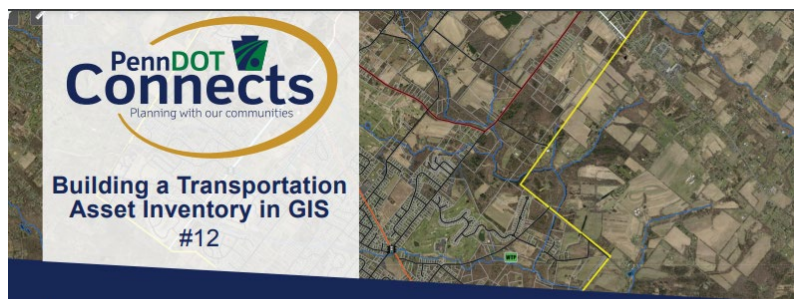


In addition to developing your Active Transportation Plan (ATP), your community will also need to review the ordinances and policies that will support active transportation goals. This could include roadway design standards in your SALDO, sidewalk design and maintenance ordinances, and many other issues. Having ATP design, maintenance, and other factors built into ordinances will facilitate implementation and achievement of your ATP goals.



## Tech Sheet #12 Building a Transportation Asset Inventory in GIS

Learn about the steps to determine the data to collect in a transportation asset inventory in Geographic Information Systems (GIS). The tech sheet will walk you through steps to determine what data your municipality should be collecting.



Tech Sheet: [Building a Transportation Asset Inventory in GIS](#)

### Introduction

Geographic Information Systems (GIS) can help municipalities increase efficiency and reduce costs for asset management and transportation planning. But how do you get started?

You may already track transportation assets in a spreadsheet. Maybe you are new to your position and your predecessor took all of their institutional knowledge with them upon their departure and you are starting from scratch. A detailed roadmap demonstrating how to build a transportation asset inventory and options to be able to access GIS data is provided in a step-by-step process below.

### Step 1: Create a List of Your Municipal Transportation Assets

Typical transportation assets owned and operated by municipalities would include municipally owned roads and other items within the road right-of-way (ROW). Table 1.0 lists potential transportation assets your municipality may own. If you do not own or are not responsible for maintaining any bridges, for example, there is no need to include that asset on your inventory.

Table 1.0- Potential Transportation Asset Categories

TRANSPORTATION ASSET CATEGORIES		
Roads	Stormwater outfalls	Traffic signals
Bridges	Stormwater pipes	Sidewalks
Culverts	Roadside swales	Curbs
Cross-pipes	Signs	ADA ramps
Stormwater inlets	Streetslights	Crosswalks
Stormwater manholes		Trails

---

## FREE Transportation and Land Use Planning – Assistance and Training

PennDOT Connects offers **free** assistance and training to municipalities to better integrate local land use development and transportation goals into the state transportation planning process.

Any municipal staff member, government official or planning partner is eligible to request **free** planning assistance or personalized training. Simply fill out the PennDOT Connects Training/Assistance request form by [clicking here](#).



---

## Do You Know Your MPO or RPO?

PennDOT and its Metropolitan Planning Organization (MPO) and Rural Planning Organization (RPO) partners have a long-standing relationship jointly preparing transportation studies, plans, and programs to make the best transportation project investments possible with available resources. This strategic alliance is now of even greater importance for PennDOT Connects implementation. Together, the MPO/RPO planning partners and PennDOT can effectively collaborate and communicate with municipalities — and other community stakeholders (e.g., transit operators, economic development agencies, etc.) — to improve transportation system performance and achieve more livable communities. The collaborative effort of municipalities, MPO/RPO planning partners, and PennDOT is key to ensuring that opportunities to improve transportation and communities are realized.

MPO/RPO contacts can be found [here](#).

---

## PennDOT Connects

The Pennsylvania Department of Transportation is committed to bettering our transportation system and our communities through collaborative planning. We must find creative solutions to sustain and expand mobility throughout the commonwealth. This means improving our planning process to reflect changing demographics and technological innovation. We are broadening the benefits we deliver and taking a more holistic approach to planning. We are tasking PennDOT staff and our planning partners to consider community needs at the beginning of the planning process to ensure the best allocation of our resources. This approach, PennDOT Connects, will make our planning processes more efficient and cost-effective to the benefit of all Pennsylvanians. The full [PennDOT Connects Policy \(PDF\)](#) includes collaboration requirements and planning considerations, as well as the implementation timeline and more.

## PennDOT Connects Newsletter

Was this newsletter forwarded to you? If yes, [click here](#) to subscribe to receive a copy directly to your inbox.



Pennsylvania Department of Transportation  
PennDOT Connects Municipal Resources  
[PennDOT Connects Web](#)  
[Municipal Resources Web](#)  
Email: [PAConnects@pa.gov](mailto:PAConnects@pa.gov)  
Phone: 717-710-2090

