



# PennDOT Connects

Planning with our communities

## FHWA Rural Livability Webinar

March 14, 2017

Brian D. Hare, P.E.  
PennDOT

Center for Program Development and Management





**IT ALL BEGINS WITH PLANNING.**



# GOAL: Better Communities and Mobility Powered through Collaboration

- PennDOT Connects builds partnerships that invest in sustainable transportation.
- PennDOT Connects leverages resources to improve communities.
- PennDOT Connects leads and innovates for a more livable Pennsylvania.
- PennDOT Connects delivers projects that improve economic competitiveness, access to work, and overall quality of life.



# Themes of Connects

**Planning**

**Partnership**

**Livability**

Environmental

**Collaboration**

Visionary

**Innovative**

Strategic

**Sharing**

**Sustainable**

**Stewardship**

Investing

**Multimodal**

# Community Collaboration

MPO Planners

**MPO**

Representatives

Metropolitan Planning  
Organization

**Municipal**

Representatives

RPO Staff

**RPO**

Representatives

Rural Planning Organization

District Planner

District Traffic

County Planners

**County**

Representatives

Other local  
government staff



**PennDOT**

Representatives

District  
Environmental





# Collaborating With Communities

## PennDOT is:

- Investing in a community with each project.
- Involving communities at the beginning of the planning process.
- Learning what project elements may be important to support a community's vision.

# How It Works

- PennDOT and our planning partners meet with local governments to discuss details for each project prior to developing project scopes and cost estimates.
- All mobility needs are considered
  - Bicycle
  - Pedestrian
  - Transit
  - Freight
  - Operations and ITS
- Utilities
- Community Health
- Stormwater Management
- Green Infrastructure



# Policy

- **Secretary's Directive – December 2016**
- **Design Manual Updates - June 2017.**
- **Online documentation system to become PennDOT Connects system.**
- **Regional LRTP guidance modifications - June 2017.**
- **Connects meetings on all new 2017 TIP projects - underway.**
- **Connects Pre - 2019 TIP Meetings, June - December 2017.**



# Opportunities for Rural Communities

- Pedestrian/Bicycle Access
- Multi-Use Trails



# Opportunities for Rural Communities

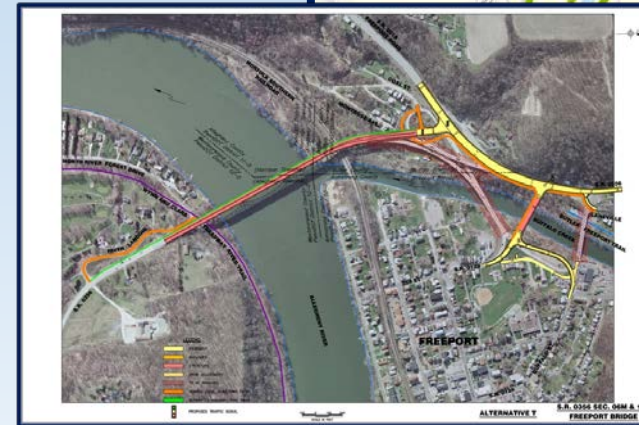
- **Stormwater Management**
- **Green Infrastructure**





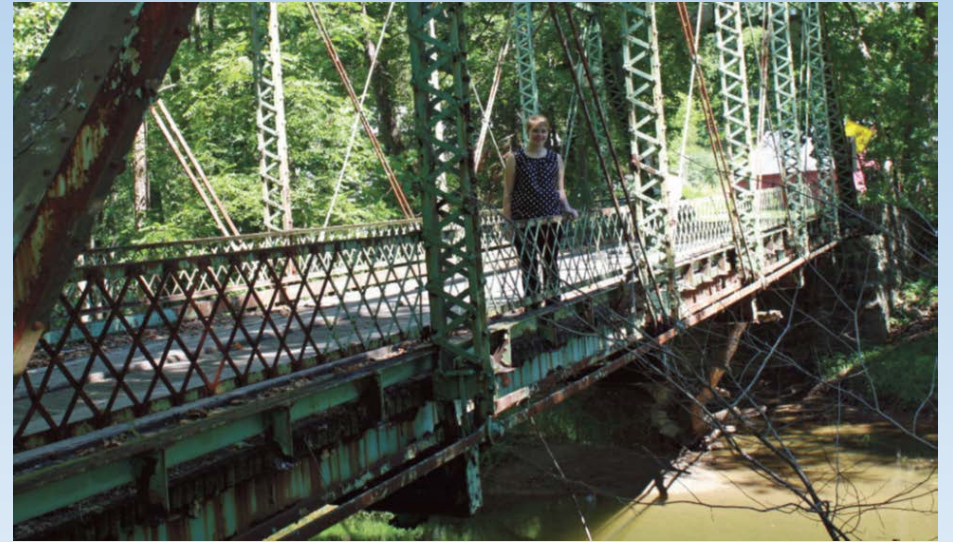
# Opportunities for Rural Communities

- **Planning Funding**
  - **Multimodal Planning**
  - **Corridor Studies**



# Opportunities for Rural Communities

- Better Relationships
  - PennDOT Who?
  - We're more than "Potholes"!







Brian D. Hare, P.E.  
PennDOT  
[bhare@pa.gov](mailto:bhare@pa.gov)

**QUESTIONS / COMMENTS**

*Thank You*